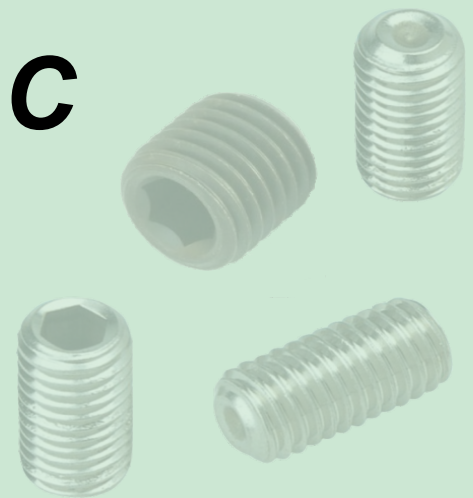


# BORE, KEYWAY & SET SCREW INFORMATION

# PowerDrive LLC

## MECHANICAL P.T. COMPONENTS

www.powerdrive.com



### Standard Keyway & Bushing Sizes With Setscrew

QUICK DETACHABLE (PQD) STEEL BUSHING	
PART NO.	Set Screw Size
QT/H	8-32UNC x 1/2
JA	10-24UNC
SH	1/4-20UNC x 3/8
SDS	1/4-20UNC x 3/8
SD	1/4-20UNC x 3/8
SK	5/16-18UNC x 1/2
SF	5/16-18UNC x 1/2
E	3/8-16UNC x 1/2
F	1/2-13UNC x 5/8
J	5/8-11UNC x 3/4
M	3/4-10UNC x 3/4
N	3/4-10UNC x 3/4
P	7/8-9 x 1 1/2

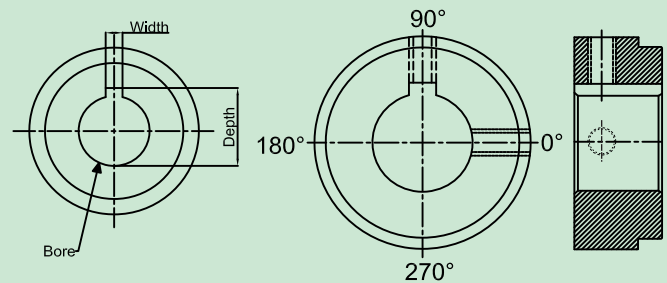
SPLIT TAPER (PST) STEEL BUSHING	
PART NO.	Set Screw Size
G	8-32UNC x 1/4
H	8-32UNC x 1/2
P1 - P3	1/4-20UNC x 3/8
B	1/4-20UNC x 3/8
Q1 - Q3	5/16-18UNC x 3/8
R1 - R2	5/16-18UNC x 3/8
S1 - S2	3/8-16UNC x 1/2
OO	5/8-11UNC x 5/8
U0 - U2	5/8-11UNC x 5/8
W1 - W2	3/4-10UNC x 1 1/4
Y0*	1-8UNC x 1 1/2

Bore	Keyway
3/8	None
1/2 to 9/16	1/8 x 1/16
5/8 to 7/8	3/16 x 3/32
15/16 to 1-1/4	1/4 x 1/8
1-5/16 to 1-3/8	5/16 x 5/32
1-7/16 to 1-3/4	3/8 x 3/16
1-13/16 to 2-1/4	1/2 x 1/4
2-5/16 to 2-3/4	5/8 x 5/16
2-13/16 to 3-1/4	3/4 x 3/8
3-5/16 to 3-3/4	7/8 x 7/16
3-13/16 to 4-1/2	1 x 1/2
4-9/16 to 5-1/2	1-1/4 x 5/8
5-9/16 to 6-1/2	1-1/2 x 3/4
6-9/16 to 7-1/2	1-3/4 x 3/4
7-9/16 to 9	2 x 3/4
9-1/16 to 11	2-1/2 x 7/8

Bore	Tolerance
0 to 2	+.002, -.000
2 to 3	+.003, -.000
3 to 4	+.004, -.000
Over 4	+.005, -.000

### Standard Setscrew Locations

If one setscrew is furnished the location will be 0°. If two setscrews are furnished the locations will be 0° and 90°, unless otherwise specified.



### Standard Keyway Dimensions

Bore	Width	Depth	Bore	Width	Depth	Bore	Width	Depth	Bore	Width	Depth	Bore	Width	Depth
1/2	1/8	.555	2	1/2	2.218	3-5/8	7/8	4.010	5-1/4	1-1/4	5.802	6-7/8	1-3/4	7.640
9/16	1/8	.618	2-1/16	1/2	2.283	3-11/16	7/8	4.074	5-5/16	1-1/4	5.865	6-15/16	1-3/4	7.704
5/8	3/16	.704	2-1/8	1/2	2.345	3-3/4	7/8	4.137	5-3/8	1-1/4	5.928	7	1-3/4	7.767
11/16	3/16	.768	2-3/16	1/2	2.409	3-13/16	1	4.248	5-7/16	1-1/4	5.992	7-1/16	1-3/4	7.831
3/4	3/16	.832	2-1/4	1/2	2.472	3-7/8	1	4.312	5-1/2	1-1/4	6.055	7-1/8	1-3/4	7.894
13/16	3/16	.895	2-5/16	5/8	2.584	3-15/16	1	4.375	5-9/16	1-1/2	6.213	7-3/16	1-3/4	7.958
7/8	3/16	.959	2-3/8	5/8	2.646	4	1	4.438	5-5/8	1-1/2	6.277	7-1/4	1-3/4	8.021
7/8	1/4	.982	2-7/16	5/8	2.711	4-1/16	1	4.502	5-11/16	1-1/2	6.340	7-5/16	1-3/4	8.084
15/16	1/4	1.046	2-1/2	5/8	2.773	4-1/8	1	4.565	5-3/4	1-1/2	6.404	7-3/8	1-3/4	8.148
1	1/4	1.109	2-9/16	5/8	2.837	4-3/16	1	4.629	5-13/16	1-1/2	6.467	7-7/16	1-3/4	8.211
1-1/16	1/4	1.173	2-5/8	5/8	2.900	4-1/4	1	4.692	5-7/8	1-1/2	6.531	7-1/2	1-3/4	8.274
1-1/8	1/4	1.236	2-11/16	5/8	2.964	4-5/16	1	4.755	5-15/16	1-1/2	6.594	7-9/16	2	8.433
1-3/16	1/4	1.299	2-3/4	5/8	3.027	4-3/8	1	4.819	6	1-1/2	6.658	7-5/8	2	8.496
1-1/4	1/4	1.362	2-13/16	3/4	3.138	4-7/16	1	4.882	6-1/16	1-1/2	6.721	7-11/16	2	8.560
1-1/4	5/16	1.386	2-7/8	3/4	3.200	4-1/2	1	4.945	6-1/8	1-1/2	6.785	7-3/4	2	8.623
1-5/16	5/16	1.450	2-15/16	3/4	3.265	4-9/16	1-1/4	5.103	6-3/16	1-1/2	6.848	7-13/16	2	8.687
1-3/8	5/16	1.513	3	3/4	3.327	4-5/8	1-1/4	5.167	6-1/4	1-1/2	6.911	7-7/8	2	8.750
1-7/16	3/8	1.600	3-1/16	3/4	3.392	4-11/16	1-1/4	5.231	6-5/16	1-1/2	6.975	7-15/16	2	8.813
1-1/2	3/8	1.664	3-1/8	3/4	3.456	4-3/4	1-1/4	5.294	6-3/8	1-1/2	7.038	8	2	8.877
1-9/16	3/8	1.728	3-3/16	3/4	3.519	4-13/16	1-1/4	5.358	6-7/16	1-1/2	7.101	8-1/16	2	8.940
1-5/8	3/8	1.791	3-1/4	3/4	3.582	4-7/8	1-1/4	5.421	6-1/2	1-1/2	7.165	8-1/8	2	9.004
1-11/16	3/8	1.854	3-5/16	7/8	3.693	4-15/16	1-1/4	5.485	6-9/16	1-3/4	7.323	8-3/16	2	9.067
1-3/4	3/8	1.917	3-3/8	7/8	3.757	5	1-1/4	5.548	6-9/16	1-3/4	7.386	8-1/4	2	9.131
1-13/16	1/2	2.029	3-7/16	7/8	3.820	5-1/16	1-1/4	5.611	6-11/16	1-3/4	7.450	8-5/16	2	9.194
1-7/8	1/2	2.091	3-1/2	7/8	3.884	5-1/8	1-1/4	5.675	6-11/16	1-3/4	7.513	8-3/8	2	9.257
1-15/16	1/2	2.156	3-9/16	7/8	3.947	5-3/16	1-1/4	5.738	6-3/4	1-3/4	7.577	8-7/16	2	9.321
									6-13/16	1-3/4	7.640	8-1/2	2	9.384

Key-Depth Tolerance is +.010 / -.000 for all standard keyways

Toll Free : 877-564-1600

info@powerdrive.com