



## INDEX

PAGE #

### CAM FOLLOWER BEARING

CF SERIES SEALED AND UNSEALED	_____	P - 1
CF-B & CF-SB SERIES	_____	P - 2
CFH & CFH-S SERIES	_____	P - 3
INTERCHANGEABILITY CHART	_____	P - 4

### YOKE ROLLER TYPE BEARING

CYR SEALED AND UNSEALED	_____	Q - 1
INTERCHANGEABILITY CHART	_____	Q - 2

### NEEDLE ROLLER BEARING

MR SERIES	_____	R - 1
MI INNER RACES	_____	R - 3
INTERCHANGEABILITY CHART	_____	R - 5
- INNER RACES ONLY		
INTERCHANGEABILITY CHART	_____	R - 6
- OUTER RING, ROLLER AND INNER RING, ASSEMBLIES ONLY		

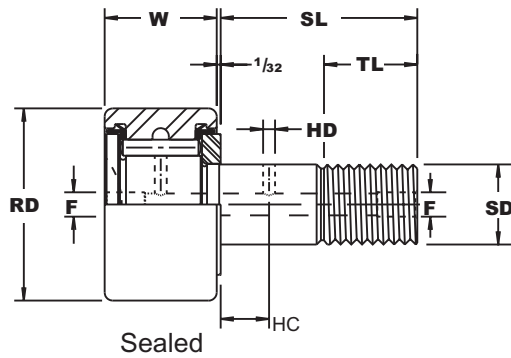
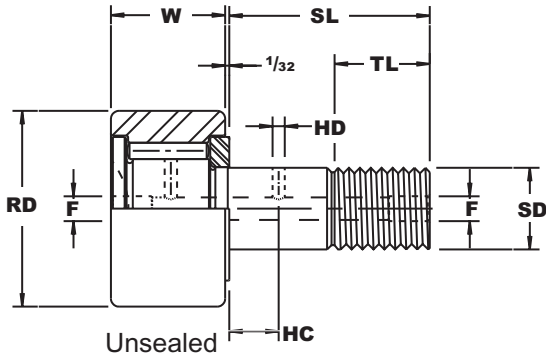
### TRACK ROLLER BEARING

PLAIN TRACK ROLLER	_____	S - 1
PLAIN ECCENTRIC TRACK ROLLER	_____	S - 2
FLANGED TRACK ROLLER	_____	S - 3
FLANGED ECCENTRIC TRACK ROLLER	_____	S - 4
V-GROOVED TRACK ROLLER	_____	S - 5
V-GROOVED ECCENTRIC TRACK ROLLER	_____	S - 6
INTERCHANGEABILITY CHART	_____	S - 7 - 8

Note: All Measurement and Dimensions are In Inch

For more information call 606-564-6100 or Fax at 606-564-5700 or email us at [info@powerdrive.com](mailto:info@powerdrive.com)

**CF & CF-S CAM FOLLOWER**

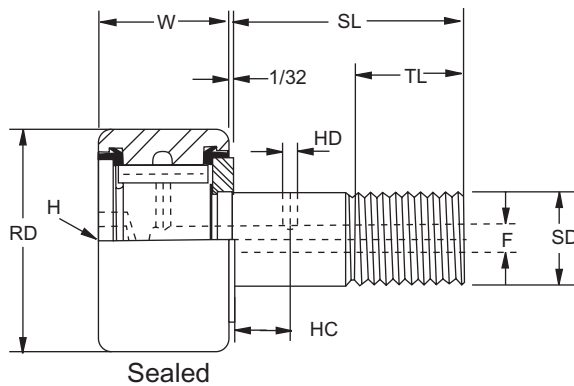


**Cam follower CF Series Standard**

UNSEALED POWERDRIVE BRG NO.	SEALD POWERDRIVE BRG NO.	ROLLER DIA. (RD) 0 -0.001	ROLLER WIDTH (W) 0 -0.005	STUD DIA. (SD) 0.001 0	STUD L'GTH. (SL)	MIN. THR'D L'GTH. (TL)	FINE THR'DS	OIL HOLE		LUB. FITTING SIZE (F)*	MIN. BOSS DIA.	HOUSING BORE DIA. +.0002 -.0003	**RECOM. CLAMPING TORQUE LBS.-IN.	MAX. STATIC CAPACITY LBS.	BASIC DYN. RATING LBS.
								HOLE CENTER (HC)	HOLE DIA. (HD)						
CF-1/2-N	CF-1/2-N-S	0.5	0.344	0.19	1/2	1/4	10-32	-	-	1/8*	19/64	0.1903	15	720	620
CF-1/2	CF-1/2-S	0.5	0.375	0.19	5/8	1/4	10-32	-	-	1/8*	19/64	0.1903	15	790	680
CF-9/16	CF-9/16-S	0.5625	0.375	0.19	5/8	1/4	10-32	-	-	1/8*	19/64	0.1903	15	790	680
CF-5/8-N	CF-5/8-N-S	0.625	0.406	0.25	5/8	5/16	1/4-28	-	-	1/8*	23/64	0.2503	35	1085	930
CF-5/8	CF-5/8-S	0.625	0.4375	0.25	3/4	5/16	1/4-28	-	-	1/8*	23/64	0.2503	35	1215	955
CF-11/16	CF-11/16-S	0.6875	0.4375	0.25	3/4	5/16	1/4-28	-	-	1/8*	23/64	0.2503	35	1215	955
CF-3/4	CF-3/4-S	0.75	0.5	0.375	7/8	3/8	3/8-24	1/4	3/32	3/16	1/2	0.3753	95	2065	1660
CF-7/8	CF-7/8-S	0.875	0.5	0.375	7/8	3/8	3/8-24	1/4	3/32	3/16	1/2	0.3753	95	2065	1660
CF-1	CF-1-S	1	0.625	0.4375	1	1/2	7/16-20	1/4	3/32	3/16	41/64	.4378	250	3060	2225
CF-1 1/8	CF-1 1/8-S	1.125	0.625	0.4375	1	1/2	7/16-20	1/4	3/32	3/16	41/64	.4378	250	3060	2225
CF 1 1/4	CF 1 1/4-S	1.25	0.75	0.5	1 1/4	5/8	1/2-20	5/16	3/32	3/16	49/64	.5003	350	4250	3930
CF-1 3/8	CF-1 3/8-S	1.375	0.75	0.5	1 1/4	5/8	1/2-20	5/16	3/32	3/16	49/64	.5003	350	4250	3930
CF-1 1/2	CF-1 1/2-S	1.5	0.875	0.625	1 1/2	3/4	5/8-18	3/8	3/32	3/16	57/64	.6253	650	5640	4840
CF-1 5/8	CF-1 5/8-S	1.625	0.875	0.625	1 1/2	3/4	5/8-18	3/8	3/32	3/16	57/64	.6253	650	5640	4840
CF-1 3/4	CF-1 3/4-S	1.75	1	0.75	1 3/4	7/8	3/4-16	7/16	3/32	3/16	1 3/64	.7503	1250	7920	6385
CF-17/8	CF-17/8-S	1.875	1	0.75	1 3/4	7/8	3/4-16	7/16	3/32	3/16	1 3/64	.7503	1250	7920	6385
CF-2	CF-2-S	2	1.25	0.875	2	1	7/8-14	1/2	1/8	3/16	1 13/64	.8753	1500	10570	8090
CF-2 1/4	CF-2 1/4-S	2.25	1.25	0.875	2	1	7/8-14	1/2	1/8	3/16	1 13/64	.8753	1500	10570	8090
CF-2 1/2	CF-2 1/2-S	2.5	1.5	1	2 1/4	1 1/8	1-14	9/16	1/8	3/16	1 5/16	1.0003	2250	16450	11720
CF-2 3/4	CF-2 3/4-S	2.75	1.5	1	2 1/4	1 1/8	1-14	9/16	1/8	3/16	1 5/16	1.0003	2250	16450	11720
CF-3.	CF-3.-S	3	1.75	1.25	2 1/2	1 1/4	1 1/4-12	5/8	1/8	1/4	1 3/4	1.2503	3450	24910	15720
CF-3 1/4	CF-3 1/4-S	3.25	1.75	1.25	2 1/2	1 1/4	1 1/4-12	5/8	1/8	1/4	1 3/4	1.2503	3450	24910	15720
CF-3 1/2	CF-3 1/2-S	3.5	2	1.375	2 3/4	1 3/8	1 3/8-12	11/16	1/8	1/4	1 59/64	1.3753	4200	31625	22800
CF-4	CF-4-S	4	2.25	1.5	3 1/2	1 1/2	1 1/2-12	3/4	1/8	1/4	2 9/32	1.5003	5000	44770	29985
	CF-5-S	5	2.75	2	5 1/16	2 9/16	2-12	7/8	3/16	1/4 N.P.T	2 7/8	2.0003	5000	67950	46575
	CF-6-S	6	3.25	2.5	6	3	2 1/2-12	1	3/16	1/4 N.P.T	3 3/8	2.5003	5000	80450	60000
	CF-7-S	7	3.75	3	7 11/16	4 1/8	3-12	1 1/4	3/16	1/4 N.P.T	3 7/8	3.0003	5000	106930	75380
	CF-8-S ▲	8	4.25 **	3.25	8 1/2	4 1/4	3 1/4-4*	-	-	1/4 N.P.T *	4 3/4	3.2503	5000	144100	92200
	CF-9-S ▲	9	4.75 **	3.75	9 1/2	4 3/4	3 1/2-4*	-	-	1/4 N.P.T *	5 7/16	3.7503	5000	183430	113260
	CF-10-S ▲	10	5.25 **	4.25	10	4 3/4	3 1/2-4*	-	-	1/4 N.P.T *	5 59/64	4.2503	5000	215565	131545

- ▲ Standard tolerance do not apply. Consult Powerdrive Customer Service.
- \* Oil hole (F) drilled from the flange end of the stud to the radial oil hole only.
- \*\* Flange extends 3/4" beyond face of outer race, and endplate extends 1/8" beyond face of outer race.
- Coarse threads.

**CF-B & CF-SB CAM FOLLOWER**

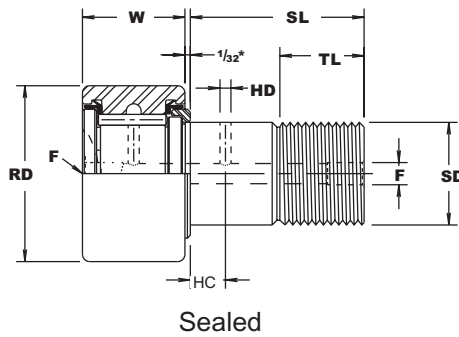
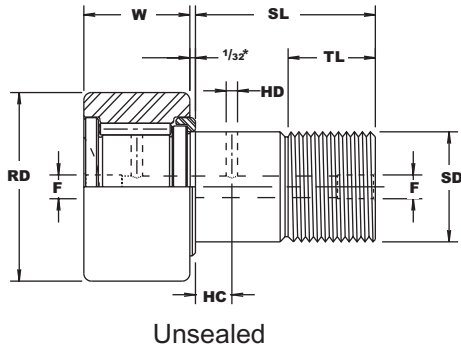


**Cam followers with hex holes**

UNSEALED POWER DRIVE BRG.NO.	SEALED POWER DRIVE BRG.NO.	ROLLER DIA(RD) +.000 -.001	ROLLER WIDTH(W) +.000 -.005	STUD DIA(SD) +.001 -.000	STUD L'GTH. (SL)	MIN. THR'D L'GHT. (TL)	FINE THR'DS.	OIL HOLE		LUB. FIT-TING SIZE(F)	MIN BOSS DIA.	HOUSING BORE DIA. +.0002 -.0003	***REMOM. CLAMPING TORQUE LBS.-IN.	MAX. STATIC CAPACITY LBS.	BASIC DYN. RATING. LBS.
								HOLE CENTER (HC)	HOLE DIA (HD)						
CF-1/2-N-B	CF-1/2-N-SB	0.500	0.344	0.190	1/2	1/4	10-32	0	0	0	19/64	0.1903	15	720	620
CF-1/2-B	CF-1/2-SB	0.500	0.375	0.190	5/8	1/4	10-32	0	0	0	19/64	0.1903	15	790	680
CF--9/16-B	CF--9/16-SB	0.563	0.375	0.190	5/8	1/4	10-32	0	0	0	19/64	0.1903	15	790	680
CF-5/8-N-B	CF-5/8-N-SB	0.625	0.406	0.250	5/8	5/16	1/4-28	0	0	0	23/64	0.2503	35	1085	930
CF-5/8-B	CF-5/8-SB	0.625	0.438	0.250	3/4	5/16	1/4-28	0	0	0	23/64	0.2503	35	1215	955
CF-11/16-B	CF-11/16-SB	0.688	0.438	0.250	3/4	5/16	1/4-28	0	0	0	23/64	0.2503	35	1215	955
CF-3/4-B	CF-3/4-SB	0.750	0.500	0.375	7/8	3/8	3/8-24	1/4	3/32	3/16	1/2	0.3753	95	2065	1660
CF-7/8-B	CF-7/8-SB	0.875	0.500	0.375	7/8	3/8	3/8-24	1/4	3/32	3/16	1/2	0.3753	95	2065	1660
CF-1-B	CF-1-SB	1.000	0.625	0.438	1	1/2	7/16-20	1/4	3/32	3/16	41/64	0.4378	250	3060	2225
CF-1 1/8-B	CF-1 1/8-SB	1.125	0.625	0.438	1	1/2	7/16-20	1/4	3/32	3/16	41/64	0.4378	250	3060	2225
CF-1 1/4-B	CF-1 1/4-SB	1.250	0.750	0.500	1 1/4	5/8	1/2-20	5/16	3/32	3/16	49/64	0.5003	350	4250	3930
CF-1 3/8-B	CF-1 3/8-SB	1.375	0.750	0.500	1 1/4	5/8	1/2-20	5/16	3/32	3/16	49/64	0.5003	350	4250	3930
CF-1 1/2-B	CF-1 1/2-SB	1.500	0.875	0.625	1 1/2	3/4	5/8-18	3/8	3/32	3/16	57/64	0.6253	650	5640	4840
CF-1 5/8-B	CF-1 5/8-SB	1.625	0.875	0.625	1 1/2	3/4	5/8-18	3/8	3/32	3/16	57/64	0.6253	650	5640	4840
CF-1 3/4-B	CF-1 3/4-SB	1.750	1.000	0.750	1 3/4	7/8	3/4-16	7/16	3/32	3/16	1 3/64	0.7503	1250	7920	6385
CF-1 7/8-B	CF-1 7/8-SB	1.875	1.000	0.750	1 3/4	7/8	3/4-16	7/16	3/32	3/16	1 3/64	0.7503	1250	7920	6385
CF-2-B	CF-2-SB	2.000	1.250	0.875	2	1	7/8-14	1/2	1/8	3/16	1 13/64	0.8753	1500	10570	8090
CF-2 1/4-B	CF-2 1/4-SB	2.250	1.250	0.875	2	1	7/8-14	1/2	1/8	3/16	1 13/64	0.8753	1500	10570	8090
CF-2 1/2-B	CF-2 1/2-SB	2.500	1.500	1.000	2 1/4	1 1/8	1-14	9/16	1/8	3/16	1 5/16	1.0003	2250	16450	11720
CF-2 3/4-B	CF-2 3/4-SB	2.750	1.500	1.000	2 1/4	1 1/8	1-14	9/16	1/8	3/16	1 5/16	1.0003	2250	16450	11720
CF-3-B	CF-3-SB	3.000	1.750	1.250	2 1/2	1 1/4	1 1/4-12	5/8	1/8	1/4 (1)	1 3/4	1.2503	3450	24910	15720
CF-3 1/4-B	CF-3 1/4-SB	3.250	1.750	1.250	2 1/2	1 1/4	1 1/4-12	5/8	1/8	1/4 (1)	1 3/4	1.2503	3450	24910	15720
CF-3 1/2-B	CF-3 1/2-SB	3.500	2.000	1.375	2 3/4	1 3/8	1 3/8-12	11/16	1/8	1/4 (1)	1 59/64	1.3753	4200	31625	22800
CF-4-B	CF-4-SB	4.000	2.250	1.500	3 1/2	1 1/2	1 1/2-12	3/4	1/8	1/4 (1)	2 9/32	1.5003	5000	44770	29985

\*\*\* Clamping torque is based on dry threads. If threads are lubricated, use half of values shown.  
 (1) Lubrication hole (F) at bottom of hex hole and 1/4 inch straight drive fitting with ball check supplied but not installed.  
 Hex hole standard on sizes above CF-4-SB.

**CFH & CFH-S CAM FOLLOWER**



**Cam followers with heavy stud**

UNSEALED POWER DRIVE BRG.NO.	SEALED POWER DRIVE BRG.NO.	ROLLER DIA(RD) +.000 -.001	ROLLER WIDTH(W) +.000 -.005	STUD DIA(SD) +.001 -.000	STUD L'GTH. (SL)	MIN. THR'D L'GHT. (TL)	FINE THR'DS.	OIL HOLE		LUB. FIT-TING SIZE(F)*	MIN BOSS DIA.	HOUSING BORE DIA. +.0002 -.0003	**REMOM. CLAMPING TORQUE LBS.-IN.	MAX. STATIC CAPACITY LBS.	BASIC DYN. RATING. LBS.
								HOLE CENTER (HC)	HOLE DIA (HD)						
CFH-1/2	CFH-1/2-S	0.500	0.375	0.250	5/8	1/4	1/4-28	-	-	1/8*	13/32	0.2503	35	1580	680
CFH-9/16	CFH-9/16-S	0.563	0.375	0.250	5/8	1/4	1/4-28	-	-	1/8*	13/32	0.2503	35	1580	680
CFH-5/8	CFH-5/8-S	0.625	0.438	0.313	3/4	5/16	5/16-24	-	-	1/8*	15/32	0.3128	90	2480	955
CFH-11/16	CFH-11/16-S	0.688	0.438	0.313	3/4	5/16	5/16-24	-	-	1/8*	15/32	0.3128	90	2480	955
CFH-3/4	CFH-3/4-S	0.750	0.500	0.438	7/8	3/8	7/16-20	1/4	3/32	3/16	39/64	0.4378	250	4130	1660
CFH-7/8	CFH-7/8-S	0.875	0.500	0.438	7/8	3/8	7/16-20	1/4	3/32	3/16	39/64	0.4378	250	4130	1660
CFH-1	CFH-1-S	1.000	0.625	0.625	1	1/2	5/8-18	1/4	3/32	3/16	25/32	0.6253	650	6120	2225
CFH-1 1/8	CFH-1 1/8-S	1.125	0.625	0.625	1	1/2	5/8-18	1/4	3/32	3/16	25/32	0.6253	650	6120	2225
CFH-1 1/4	CFH-1 1/4-S	1.250	0.750	0.750	1 1/4	5/8	3/4-16	5/16	3/32	3/16	63/64	0.7503	1250	8500	3930
CFH-1 3/8	CFH-1 3/8-S	1.375	0.750	0.750	1 1/4	5/8	3/4-16	5/16	3/32	3/16	63/64	0.7503	1250	8500	3930
CFH-1 1/2	CFH-1 1/2-S	1.500	0.875	0.875	1 1/2	3/4	7/8-14	3/8	3/32	3/16	1 3/32	0.8753	1500	11280	4840
CFH-1 5/8	CFH-1 5/8-S	1.625	0.875	0.875	1 1/2	3/4	7/8-14	3/8	3/32	3/16	1 3/32	0.8753	1500	11280	4840
CFH-1 3/4	CFH-1 3/4-S	1.750	1.000	1.000	1 3/4	7/8	1-14	7/16	3/32	3/16	1 1/4	1.0003	2250	15840	6385
CFH-1 7/8	CFH-1 7/8-S	1.875	1.000	1.000	1 3/4	7/8	1-14	7/16	3/32	3/16	1 1/4	1.0003	2250	15840	6385
CFH-2	CFH-2-S	2.000	1.250	1.125	2	1	1 1/8-12	1/2	1/8	3/16	1 13/32	1.1253	2800	21140	8090
CFH-2 1/4	CFH-2 1/4-S	2.250	1.250	1.125	2	1	1 1/8-12	1/2	1/8	3/16	1 13/32	1.1253	2800	21140	8090
CFH-2 1/2	CFH-2 1/2-S	2.500	1.500	1.250	2 1/4	1 1/8	1 1/4-12	9/16	1/8	3/16	1 11/16	1.2503	3450	32900	11720
CFH-2 3/4	CFH-2 3/4-S	2.750	1.500	1.250	2 1/4	1 1/8	1 1/4-12	9/16	1/8	3/16	1 11/16	1.2503	3450	32900	11720
CFH-3	CFH-3-S	3.000	1.750	1.500	2 1/2	1 1/4	1 1/2-12	5/8	1/8	1/4	2 1/8	1.5003	5000	49820	15720
CFH-3 1/4	CFH-3 1/4-S	3.250	1.750	1.500	2 1/2	1 1/4	1 1/2-12	5/8	1/8	1/4	2 1/8	1.5003	5000	49820	15720
CFH-3 1/2	CFH-3 1/2-S	3.500	2.000	1.750	2 3/4	1 3/8	1 3/4-12	11/16	1/8	1/4	2 7/16	1.7503	5000	63250	22800
CFH-4	CFH-4-S	4.000	2.250	2.000	3 1/2	1 1/2	2-12	3/4	1/8	1/4	2 51/64	2.0003	5000	89540	29985
	CFH-5-S	5.000	2.750	2.500	5 1/16	2 9/16	2 1/2-12	7/8	3/16	1/4 N.P.T.	3 9/16	2.5003	5000	135900	46575
	CFH-6-S	6.000	3.250	3.000	6	3	3-12	1	3/16	1/4 N.P.T.	4 15/32	3.0003	5000	160900	60000
	CFH-7-S	7.000	3.750	3.500	7 11/16	4 1/8	3 1/2-4	1 1/4	3/16	1/4 N.P.T.	5 3/16	3.5003	5000	213860	75380

\* Oil hole (F) drilled from the flange end of the stud to the radial oil hole only.  
 \*\* Clamping torque is based on dry threads. If threads are lubricated, use half of values shown.  
 • Coarse Thread.

**INTERCHANGEABILITY CHART**

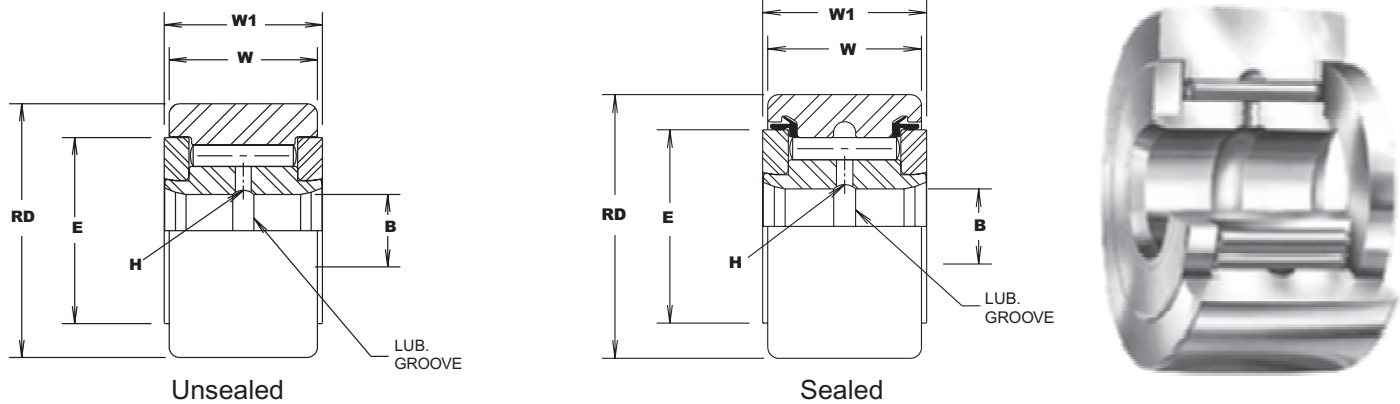
**SEALD CAM FOLLOWER BEARINGS**

POWER DRIVE		McGILL		R.B.C		PCI	
STD. STUD SEALED	HEAVY STUD SEALED	STD. STUD SEALED	HEAVY STUD SEALED	STD. STUD SEALED	HEAVY STUD SEALED	STD. STUD SEALED	HEAVY STUD SEALED
CF-1/2-N-S	CFH-1/2-S	CF-1/2-N-S	CFH-1/2-S	S-16-L	H-16-L		
CF-1/2-S	CFH-9/16-S	CF-1/2-S	CFH-9/16-S	S-18-L	H-18-L		
CF-9/16-S		CF-9/16-S					
CF-5/8-N-S	CFH-5/8-S	CF-5/8-N-S	CFH-5/8-S	S-20-L	H-20-L		
CF-5/8-S		CF-5/8-S		S-22-L	H-22-L		
CF-11/16-S	CFH-3/4-S	CF-11/16-S	CFH-3/4-S	S-24-L	H-24-L		
CF-3/4-S	CFH-7/8-S	CF-3/4-S	CFH-7/8-S	S-28-L	H-28-L		
CF-7/8-S	CFH-1-S	CF-7/8-S	CFH-1-S	S-32-L	H-32-L		
CF-1-S	CFH-11/8-S	CF-1-S	CFH-11/8-S	S-36-L	H-36-L		
CF-11/8-S	CFH-11/4-S	CF-11/8-S	CFH-11/4-S	S-40-L	H-40-L		
CF-11/4-S	CFH-13/8-S	CF-11/4-S	CFH-13/8-S	S-44-L	H-44-L		
CF-13/8-S	CFH-11/2-S	CF-13/8-S	CFH-11/2-S	S-48-L	H-48-L		
CF-11/2-S	CFH-15/8-S	CF-11/2-S	CFH-15/8-S	S-52-L	H-52-L		
CF-15/8-S	CFH-13/4-S	CF-15/8-S	CFH-13/4-S	S-56-L	H-56-L		
CF-13/4-S	CFH-17/8-S	CF-13/4-S	CFH-17/8-S	S-60-L	H-60-L		
CF-17/8-S	CFH-2-S	CF-17/8-S	CFH-2-S	S-64-L	H-64-L	SCF-2.00-S	HCF-2.00-S
CF-2-S	CFH-21/4-S	CF-2-S	CFH-21/4-S	S-72-L	H-72-L	SCF-2.25-S	HCF-2.25-S
CF-21/4-S	CFH-21/2-S	CF-21/4-S	CFH-21/2-S	S-80-L	H-80-L	SCF-2.50-S	HCF-2.50-S
CF-21/2-S	CFH-23/4-S	CF-21/2-S	CFH-23/4-S	S-88-L	H-88-L	SCF-2.75-S	HCF-2.75-S
CF-23/4-S	CFH-3-S	CF-23/4-S	CFH-3-S	S-96-L	H-96-L	SCF-3.00-S	HCF-3.00-S
CF-3-S	CFH-31/4-S	CF-3-S	CFH-31/4-S	S-104-L	H-104-L	SCF-3.25-S	HCF-3.25-S
CF-31/4-S	CFH-31/2-S	CF-31/4-S	CFH-31/2-S	S-112-L	H-112-L	SCF-3.50-S	HCF-3.50-S
CF-31/2-S	CFH-4-S	CF-31/2-S	CFH-4-S	S-128-L	H-128-L	SCF-4.00-S	HCF-4.00-S
CF-4-S	CFH-5-S	CF-4-S	CFH-5-S	S-160-LW	H-160-LW		
CF-5-S	CFH-6-S	CF-5-S	CFH-6-S	S-192-LW	H-192-LW		
CF-6-S	CFH-7-S	CF-6-S	CFH-7-S				
CF-7-S		CF-7-S					
CF-8-S		CF-8-S					
CF-9-S		CF-9-S					
CF-10-S		CF-10-S					

**UNSEALED CAM FOLLOWER BEARINGS**

POWER DRIVE		Mc GILL		R.B.C		PCI	
STD. STUD	HEAVY STUD	STD. STUD	HEAVY STUD	STD. STUD	HEAVY STUD	STD. STUD	HEAVY STUD
CF-1/2-N		CF-1/2-N					
CF-1/2	CFH-1/2	CF-1/2	CFH-1/2	S-16	H-16-L		
CF-9/16	CFH-9/16	CF-9/16	CFH-9/16	S-18	H-18-L		
CF-5/8-N		CF-5/8-N					
CF-5/8	CFH-5/8	CF-5/8	CFH-5/8	S-20	H-20-L		
CF-11/16		CF-11/16		S-22	H-22-L		
CF-3/4	CFH-3/4	CF-3/4	CFH-3/4	S-24	H-24-L		
CF-7/8	CFH-7/8	CF-7/8	CFH-7/8	S-28	H-28-L		
CF-1	CFH-1	CF-1	CFH-1	S-32	H-32-L		
CF-1 1/8	CFH-1 1/8	CF-1 1/8	CFH-1 1/8	S-36	H-36-L		
CF-1 1/4	CFH-1 1/4	CF-1 1/4	CFH-1 1/4	S-40	H-40-L		
CF-1 3/8	CFH-1 3/8	CF-1 3/8	CFH-1 3/8	S-44	H-44-L		
CF-1 1/2	CFH-1 1/2	CF-1 1/2	CFH-1 1/2	S-48	H-48-L		
CF-1 5/8	CFH-1 5/8	CF-1 5/8	CFH-1 5/8	S-52	H-52-L		
CF-1 3/4	CFH-1 3/4	CF-1 3/4	CFH-1 3/4	S-56	H-56-L		
CF-1 7/8	CFH-1 7/8	CF-1 7/8	CFH-1 7/8	S-60	H-60-L		
CF-2	CFH-2	CF-2	CFH-2	S-64	H-64-L	SCF-2.00	HCF-2.00
CF-2 1/4	CFH-2 1/4	CF-2 1/4	CFH-2 1/4	S-72	H-72-L	SCF-2.25	HCF-2.25
CF-2 1/2	CFH-2 1/2	CF-2 1/2	CFH-2 1/2	S-80	H-80-L	SCF-2.50	HCF-2.50
CF-2 3/4	CFH-2 3/4	CF-2 3/4	CFH-2 3/4	S-88	H-88-L	SCF-2.75	HCF-2.75
CF-3	CFH-3	CF-3	CFH-3	S-96	H-96-L	SCF-3.00	HCF-3.00
CF-3 1/4	CFH-3 1/4	CF-3 1/4	CFH-3 1/4	S-104	H-104-L	SCF-3.25	HCF-3.25
CF-3 1/2	CFH-3 1/2	CF-3 1/2	CFH-3 1/2	S-112	H-112-L	SCF-3.50	HCF-3.50
CF-4	CFH-4	CF-4	CFH-4	S-128	H-128-L	SCF-4.00	HCF-4.00

**CYR & CYR-S TYPE BEARINGS**



**CYR & CYR-S series - Yoke roller**

Cam followers without studs for shaft mounting, with and without seals

UNSEALED POWER DRIVE BRG.NO.	SEALED POWER DRIVE BRG.NO.	ROLLER DIA(RD) +0.000 -0.001	ROLLER WIDTH(W) +0.000 -0.005	BORE (B)		WIDTH OVER END PLATES (W1) +0.005 -0.010	DIA. OF END PLATES (E)	OIL HOLE (H) DIA.	MIN BOSS DIA.	SHAFT DIA						MAX. STATIC CAPACITY LBS.	BASIC DYN. RATING. LBS.
				NOM.	TOL.					PUSH FIT		DRIVE FIT		PRESS FIT			
										NOM.	TOL.	NOM.	TOL.	NOM.	TOL.		
CYR-3/4	CYR-3/4-S	0.750	0.500	0.250		0.563	39/64		1/2	0.2495		0.2501		0.2503		4130	1660
CYR-7/8	CYR-7/8-S	0.875	0.500	0.250		0.563	39/64		1/2	0.2495		0.2501		0.2503		4130	1660
CYR-1	CYR-1-S	1.000	0.625	0.313		0.688	25/32		41/64	0.312		0.3126		0.3128		6120	2225
CYR-1 1/8	CYR-1 1/8-S	1.125	0.625	0.313		0.688	25/32		41/64	0.312		0.3126		0.3128		6120	2225
CYR-1 1/4	CYR-1 1/4-S	1.250	0.750	0.375		0.813	63/64		49/64	0.3745		0.3751		0.3753		8500	3930
CYR-1 3/8	CYR-1 3/8-S	1.375	0.750	0.375		0.813	63/64		49/64	0.3745		0.3751		0.3753		8500	3930
CYR-1 1/2	CYR-1 1/2-S	1.500	0.875	0.438	+0.0002	0.938	1 3/32	3/32	57/64	0.437		0.4376		0.4378		11280	4840
CYR-1 5/8	CYR-1 5/8-S	1.625	0.875	0.438	-0.0004	0.938	1 3/32		57/64	0.437	±0.0002	0.4376	±0.0002	0.4378	±0.0002	11280	4840
CYR-1 3/4	CYR-1 3/4-S	1.750	1.000	0.500		1.063	1 1/4		1 3/64	0.4995		0.5001		0.5005		15840	6385
CYR1 7/8	CYR-1 7/8-S	1.875	1.000	0.500		1.063	1 1/4		1 3/64	0.4995		0.5001		0.5005		15840	6385
CYR-2	CYR-2-S	2.000	1.250	0.625		1.313	1 13/32		1 13/64	0.6245		0.6251		0.6255		21140	8090
CYR-2 1/4	CYR-2 1/4-S	2.250	1.250	0.625		1.313	1 13/32		1 13/64	0.6245		0.6251		0.6255		21140	8090
CYR-2 1/2	CYR-2 1/2-S	2.500	1.500	0.750		1.563	1 11/16		1 5/16	0.7495		0.7501		0.7505		32900	11720
CYR-2 3/4	CYR-2 3/4-S	2.750	1.500	0.750		1.563	1 11/16		1 5/16	0.7495		0.7501		0.7505		32900	11720
CYR-3	CYR-3-S	3.000	1.750	1.000		1.813	2 1/8		1 3/4	0.9994		1.0002		1.0006		49820	15720
CYR-3 1/4	CYR-3 1/4-S	3.250	1.750	1.000		1.813	2 1/8	1/8	1 3/4	0.9994		1.0002		1.0006		49820	15720
CYR-3 1/2	CYR-3 1/2-S	3.500	2.000	1.125	+0.0001	2.063	2 7/16		1 59/64	1.1244		1.1252	+0.0002	1.1256	+0.0002	63250	22800
CYR-4	CYR-4-S	4.000	2.250	1.250	-0.0005	2.313	2 51/64		2 9/32	1.1244		1.2502	-0.0003	1.2506	-0.0003	89540	29985
	CYR-5-S	5.000	2.750	1.750		2.875	3 9/16		2 7/8	1.7494		1.7502		1.7506		135900	46575
	CYR-6-S	6.000	3.250	2.250		3.375	4 15/32	3/16	3 3/8	2.2494		2.2502		2.2506		160900	60000
	CYR-7-S	7.000	3.750	2.750		3.875	5 3/16		3 7/8	2.7494		2.7502		2.7506		213860	75380
	CYR-8-S ♦	8.000	4.250	3.255	+0.001	4.500	4 3/8	1/4	4 3/8	3.2545		3.256		3.2565		288200	92200
	CYR-9-S ♦	9.000	4.750	3.755	-0.000	5.000	5 1/16	5/16	5 1/16	3.7545	±0.0005	3.756	±0.0005	3.7565	±0.0005	366850	113260
	CYR-10-S ♦	10.000	5.250	4.255		5.500	5 15/32	3/8	5 15/32	4.2545		4.256		4.2565		431130	131545

♦ Standard tolerances do not apply. Consult POWER DRIVE Customer Service.  
**NOTE:** Consult POWER DRIVE Customer Service for limiting speeds.

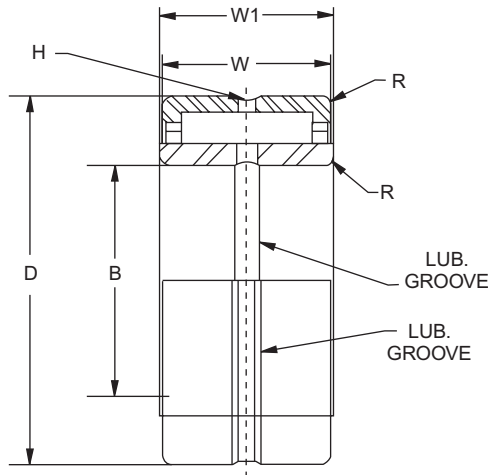
## INTERCHANGEABILITY CHART

---

### UNSEALED AND SEALED CAM YOKE ROLLER BEARINGS

POWER DRIVE		Mc GILL		R.B.C		PCI	
UNSEALED	SEALED	UNSEALED	SEALED	UNSEALED	SEALED	UNSEALED	SEALED
CYR-3/4	CYR-3/4-S	CYR-3/4	CYR-3/4-S	Y-24	Y-24-L		
CYR-7/8	CYR-7/8-S	CYR-7/8	CYR-7/8-S	Y-28	Y-28-L		
CYR-1	CYR-1-S	CYR-1	CYR-1-S	Y-32	Y-32-L		
CYR-1 1/8	CYR-1-1/8-S	CYR-1 1/8	CYR-1-1/8-S	Y-36	Y-36-L		
CYR-1 1/4	CYR-1-1/4-S	CYR-1 1/4	CYR-1-1/4-S	Y-40	Y-40-L		
CYR-1 3/8	CYR-1 3/8-S	CYR-1 3/8	CYR-1 3/8-S	Y-44	Y-44-L		
CYR-1 1/2	CYR-1 1/2-S	CYR-1 1/2	CYR-1 1/2-S	Y-48	Y-48-L		
CYR-1 5/8	CYR-1 5/8-S	CYR-1 5/8	CYR-1 5/8-S	Y-52	Y-52-L		
CYR-1 3/4	CYR-1 3/4-S	CYR-1 3/4	CYR-1 3/4-S	Y-56	Y-56-L		
CYR-1 7/8	CYR-1 7/8-S	CYR-1 7/8	CYR-1 7/8-S	Y-60	Y-60-L		
CYR-2	CYR-2-S	CYR-2	CYR-2-S	Y-64	Y-64-L	YCF-2.00	YCF-2.00-S
CYR-2 1/4	CYR-2 1/4-S	CYR-2 1/4	CYR-2 1/4-S	Y-72	Y-72-L	YCF-2.25	YCF-2.25-S
CYR-2 1/2	CYR-2 1/2-S	CYR-2 1/2	CYR-2 1/2-S	Y-80	Y-80-L	YCF-2.50	YCF-2.50-S
CYR-2 3/4	CYR-2 3/4-S	CYR-2 3/4	CYR-2 3/4-S	Y-88	Y-88-L	YCF-2.75	YCF-2.75-S
CYR-3	CYR-3-S	CYR-3	CYR-3-S	Y-96	Y-96-L	YCF-3.00	YCF-3.00-S
CYR-3 1/4	CYR-3 1/4-S	CYR-3 1/4	CYR-3 1/4-S	Y-104	Y-104-L	YCF-3.25	YCF-3.25-S
CYR-3 1/2	CYR-3 1/2-S	CYR-3 1/2	CYR-3 1/2-S	Y-112	Y-112-L	YCF-3.50	YCF-3.50-S
CYR-4	CYR4-S	CYR-4	CYR4-S	Y-128	Y-128-L	YCF-4.00	YCF-4.00-S
	CYR-5-S		CYR-5-S	Y-160	Y-160-L		YCF-5.00-S
	CYR-6-S		CYR-6-S	Y-192	Y-192-L		YCF-6.00-S
	CYR-7-S		CYR-7-S	Y-224	Y-224-L		YCF-7.00-S
	CYR-8-S		CYR-8-S				YCF-8.00-S
	CYR-9-S		CYR-9-S				YCF-9.00-S
	CYR-10-S		CYR-10-S				YCF-10.00-S

**MR SERIES**



**Outer ring and roller assembly with separable inner ring**

POWER DRIVE outer ring & roller assy.	POWER DRIVE NUMBER inner ring only	B		D		W +0.000 -0.005	W1 +0.000 -0.005	H HOLE DIA	R MAX FILLET for shaft	SHAFT DIA.				HSG. BORE DIA.				STATIC LOAD RATING (LBS.)	BASIC DYNAMIC RATING (LBS.)
		+0.000	TOL.	+0.000	TOL.					ROTAT SHAFT	TOL. +0.000	STAT.	TOL. +0.000	ROTAT. HSG.	TOL. +0.000	STAT. HSG.	TOL. +0.000		
MR-10-N	MI-6-N	0.3750	-0.0004	1.125	-0.0005	0.750	0.760	5/64	0.025	0.3755	-0.0005	0.3747	-0.0005	1.1247	-0.0007	1.1257	-0.0007	4300	4320
MR-10-N	MI-7-N	0.4375	-0.0004	1.125	-0.0005	0.750	0.760	5/64	0.025	0.438	-0.0005	0.4372	-0.0005	1.1247	-0.0007	1.1257	-0.0007	4300	4320
MR-10	MI-6	0.3750	-0.0004	1.125	-0.0005	1.000	1.010	5/64	0.025	0.3755	-0.0005	0.3747	-0.0005	1.1247	-0.0007	1.1257	-0.0007	6500	5930
MR-12-N	MI-8-N	0.5000	-0.0004	1.25	-0.0005	0.750	0.760	5/64	0.04	0.5005	-0.0005	0.4997	-0.0005	1.2497	-0.0007	1.2507	-0.0007	5400	4990
MR-12-N	MI-9-N	0.5625	-0.0004	1.25	-0.0005	0.750	0.760	5/64	0.04	0.563	-0.0005	0.5623	-0.0005	1.2497	-0.0007	1.2507	-0.0007	5400	4990
MR-12	MI-8	0.5000	-0.0004	1.25	-0.0005	1.000	1.010	5/64	0.04	0.5005	-0.0005	0.4997	-0.0005	1.2497	-0.0007	1.2507	-0.0007	8100	6830
MR-14-N	MI-10-N	0.6250	-0.0004	1.375	-0.0005	0.750	0.760	5/64	0.04	0.6255	-0.0005	0.6247	-0.0005	1.3747	-0.0007	1.3757	-0.0007	6000	5280
MR-14-N	MI-11-N	0.6875	-0.0004	1.375	-0.0005	0.750	0.760	5/64	0.04	0.688	-0.0005	0.6872	-0.0005	1.3747	-0.0007	1.3757	-0.0007	6000	5280
MR-14	MI-10	0.6250	-0.0004	1.375	-0.0005	1.000	1.010	5/64	0.04	0.6255	-0.0005	0.6247	-0.0005	1.3747	-0.0007	1.3757	-0.0007	9000	7240
MR-16-N	MI-12-N	0.7500	-0.0004	1.5	-0.0005	0.750	0.760	5/64	0.04	0.7505	-0.0005	0.7497	-0.0005	1.4997	-0.0007	1.5007	-0.0007	7100	5880
MR-16-N	MI-13-N	0.8125	-0.0005	1.5	-0.0005	0.750	0.760	5/64	0.04	0.8129	-0.0005	0.8121	-0.0005	1.4997	-0.0007	1.5007	-0.0007	7100	5840
MR-16	MI-12	0.7500	-0.0005	1.5	-0.0005	1.000	1.010	5/64	0.04	0.7505	-0.0005	0.7497	-0.0005	1.4997	-0.0007	1.5007	-0.0007	10600	8000
MR-16	MI-13	0.8125	-0.0005	1.5	-0.0005	1.000	1.010	5/64	0.04	0.8129	-0.0005	0.8121	-0.0005	1.4997	-0.0007	1.5007	-0.0007	10600	8000
MR-18-N	MI-14-N	0.8750	-0.0005	1.625	-0.0005	1.000	1.010	3/32	0.04	0.8754	-0.0005	0.8746	-0.0005	1.6247	-0.0007	1.6257	-0.0007	12200	8720
MR-18-N	MI-15-N	0.9375	-0.0005	1.625	-0.0005	1.000	1.010	3/32	0.04	0.9379	-0.0005	0.9371	-0.0005	1.6247	-0.0007	1.6257	-0.0007	12200	8720
MR-18	MI-14	0.8750	-0.0005	1.625	-0.0005	1.250	1.260	3/32	0.04	0.8754	-0.0005	0.8746	-0.0005	1.6247	-0.0007	1.6257	-0.0007	16300	10900
MR-18	MI-15	0.9375	-0.0005	1.625	-0.0005	1.250	1.260	3/32	0.04	0.9379	-0.0005	0.9371	-0.0005	1.6247	-0.0007	1.6257	-0.0007	16300	10900
MR-20-N	MI-16-N	1.0000	-0.0005	1.75	-0.0005	1.000	1.010	3/32	0.04	1.0004	-0.0005	0.9996	-0.0005	1.7497	-0.0007	1.7507	-0.0007	13100	9020
MR-20	MI-16	1.0000	-0.0005	1.75	-0.0005	1.250	1.260	3/32	0.04	1.0004	-0.0005	0.9996	-0.0005	1.7497	-0.0007	1.7507	-0.0007	17500	11300
MR-22-N	MI-18-N	1.1250	-0.0005	1.875	-0.0005	1.000	1.010	3/32	0.04	1.1255	-0.0005	1.1246	-0.0005	1.8747	-0.0007	1.8757	-0.0007	14700	9640
MR-22	MI-17	1.0625	-0.0005	1.875	-0.0005	1.250	1.260	3/32	0.04	1.063	-0.0005	1.0621	-0.0005	1.8747	-0.0007	1.8757	-0.0007	19700	12100
MR-22	MI-18	1.1250	-0.0005	1.875	-0.0005	1.250	1.260	3/32	0.04	1.1255	-0.0005	1.1246	-0.0005	1.8747	-0.0007	1.8757	-0.0007	19700	12100
MR-24-N	MI-20-N	1.2500	-0.0005	2.0625	-0.0006	1.000	1.010	3/32	0.06	1.2505	-0.0005	1.2496	-0.0005	2.0621	-0.0007	2.0632	-0.0007	15500	10300
MR-24	MI-19	1.1875	-0.0005	2.0625	-0.0006	1.250	1.260	3/32	0.06	1.188	-0.0005	1.1871	-0.0005	2.0621	-0.0007	2.0632	-0.0007	20800	13000
MR-24	MI-20	1.2500	-0.0005	2.0625	-0.0006	1.250	1.260	3/32	0.06	1.2505	-0.0005	1.2496	-0.0005	2.0621	-0.0007	2.0632	-0.0007	20800	13000
MR-26-N	MI-21-N	1.3125	-0.0005	2.1875	-0.0006	1.000	1.010	3/32	0.06	1.313	-0.0005	1.3121	-0.0005	2.1871	-0.0007	2.1882	-0.0007	16400	10600
MR-26	MI-21	1.3125	-0.0005	2.1875	-0.0006	1.250	1.260	3/32	0.06	1.313	-0.0005	1.3121	-0.0005	2.1871	-0.0007	2.1882	-0.0007	22100	13300
MR-26	MI-22-4S	1.3750	-0.0005	2.1875	-0.0006	1.250	1.260	3/32	0.06	1.3755	-0.0005	1.3746	-0.0005	2.1871	-0.0007	2.1882	-0.0007	22100	13300
MR-28-N	MI-24-N	1.5000	-0.0005	2.3125	-0.0006	1.000	1.010	3/32	0.06	1.5005	-0.0005	1.4996	-0.0005	2.3121	-0.0007	2.3132	-0.0007	18100	11200
MR-28	MI-22	1.3750	-0.0005	2.3125	-0.0006	1.250	1.260	3/32	0.06	1.3755	-0.0005	1.3746	-0.0005	2.3121	-0.0007	2.3132	-0.0007	24400	14100
MR-28	MI-23	1.4375	-0.0005	2.3125	-0.0006	1.250	1.260	3/32	0.06	1.438	-0.0005	1.4371	-0.0005	2.3121	-0.0007	2.3132	-0.0007	24400	14100
MR-28	MI-24	1.5000	-0.0005	2.3125	-0.0006	1.250	1.260	3/32	0.06	1.5005	-0.0005	1.4996	-0.0005	2.3121	-0.0007	2.3132	-0.0007	24400	14400

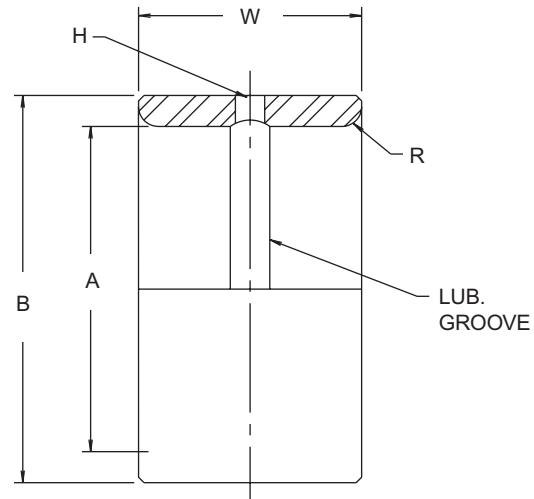


MR SERIES

POWER DRIVE outer ring & roller assy.	POWER DRIVE NUMBER inner ring only	B		D		W +0.000 -0.005	W1 +0.000 -0.005	H HOLE DIA	R MAX FILLET for shaft	SHAFT DIA.				HSG. BORE DIA.				STATIC LOAD RATING (LBS.)	BASIC DYNAMIC RATING (LBS.)
		+0.000	TOL.	+0.000	TOL.					ROTAT SHAFT	TOL. +0.000	STAT. SHAFT	TOL. +0.000	ROTAT. HSG.	TOL. +0.000	STAT. HSG.	TOL. +0.000		
MR-30	MI-25-4S	1.5625	-0.0005	2.4375	-0.0006	1.250	1.260	3/32	0.60	1.563	-0.0005	1.5621	-0.0005	2.4371	-0.0007	2.4382	-0.0007	25600	14400
MR-31	MI-26-2S	1.6250	-0.0005	2.5000	-0.0006	1.250	1.260	3/32	0.60	1.6255	-0.0005	1.6246	-0.0005	2.4996	-0.0007	2.5007	-0.0007	22400	12400
MR-32-N	MI-26-N	1.6250	-0.0005	2.5625	-0.0006	1.000	1.010	3/32	0.60	1.6255	-0.0005	1.6246	-0.0005	2.5621	-0.0007	2.5632	-0.0007	20700	12000
MR-32	MI-25	1.5625	-0.0005	2.5625	-0.0006	1.250	1.260	3/32	0.60	1.563	-0.0005	1.5621	-0.0005	2.5621	-0.0007	2.5632	-0.0007	27900	15200
MR-32	MI-26	1.6250	-0.0005	2.5625	-0.0006	1.250	1.260	3/32	0.60	1.6255	-0.0005	1.6246	-0.0005	2.5621	-0.0007	2.5632	-0.0007	27900	15200
MR-32	MI-27	1.6875	-0.0005	2.5625	-0.0006	1.250	1.260	3/32	0.60	1.688	-0.0005	1.6871	-0.0005	2.5621	-0.0007	2.5632	-0.0007	27900	15200
MR-36-N	MI-28-N	1.7500	-0.0005	3.0000	-0.0006	1.500	1.510	1/8	0.60	1.7505	-0.0005	1.7496	-0.0005	2.9996	-0.0007	3.0007	-0.0007	39100	22400
MR-36	MI-28	1.7500	-0.0005	3.0000	-0.0006	1.750	1.760	1/8	0.60	1.7505	-0.0005	1.7496	-0.0005	2.9996	-0.0007	3.0007	-0.0007	47400	26000
MR-36	MI-30	1.8750	-0.0005	3.0000	-0.0006	1.750	1.760	1/8	0.60	1.8755	-0.0005	1.8746	-0.0005	2.9996	-0.0007	3.0007	-0.0007	47400	26000
MR-40-N	MI-32-N	2.0000	-0.0005	3.2500	-0.0006	1.500	1.510	1/8	0.80	2.0005	-0.0005	1.9996	-0.0005	3.2496	-0.0007	3.2507	-0.0007	42900	23400
MR-40	MI-31	1.9375	-0.0005	3.2500	-0.0006	1.750	1.760	1/8	0.80	1.938	-0.0005	1.9371	-0.0005	3.2496	-0.0007	3.2507	-0.0007	52100	27200
MR-40	MI-32	2.0000	-0.0005	3.2500	-0.0006	1.750	1.760	1/8	0.80	2.0005	-0.0005	1.9996	-0.0005	3.2496	-0.0007	3.2507	-0.0007	52100	27200
MR-40	MI-34	2.1250	-0.0006	3.2500	-0.0006	1.750	1.760	1/8	0.80	2.1258	-0.0008	2.1247	-0.0008	3.2496	-0.0007	3.2507	-0.0007	52100	27200
MR-44-N	MI-36-N	2.2500	-0.0006	3.5000	-0.0008	1.500	1.510	1/8	0.80	2.2508	-0.0008	2.2497	-0.0008	3.4995	-0.0010	3.5008	-0.0010	46700	24500
MR-44	MI-35	2.1875	-0.0006	3.5000	-0.0008	1.750	1.760	1/8	0.80	2.1883	-0.0008	2.1872	-0.0008	3.4995	-0.0010	3.5008	-0.0010	56700	28400
MR-44	MI-36	2.2500	-0.0006	3.5000	-0.0008	1.750	1.760	1/8	0.80	2.2508	-0.0008	2.2497	-0.0008	3.4995	-0.0010	3.5008	-0.0010	56700	28400
MR-48-N	MI-40-N	2.5000	-0.0006	3.7500	-0.0008	1.500	1.510	1/8	0.80	2.5008	-0.0008	2.4997	-0.0008	3.7495	-0.0010	3.7508	-0.0010	52300	26100
MR-48	MI-38	2.3750	-0.0006	3.7500	-0.0008	1.750	1.760	1/8	0.80	2.3758	-0.0008	2.3747	-0.0008	3.7495	-0.0010	3.7508	-0.0010	63400	30300
MR-48	MI-39	2.4375	-0.0006	3.7500	-0.0008	1.750	1.760	1/8	0.80	2.4383	-0.0008	2.4372	-0.0008	3.7495	-0.0010	3.7508	-0.0010	63400	30300
MR-48	MI-40	2.5000	-0.0006	3.7500	-0.0008	1.750	1.760	1/8	0.80	2.5008	-0.0008	2.4997	-0.0008	3.7495	-0.0010	3.7508	-0.0010	63400	30300
MR-52	MI-42	2.6250	-0.0006	4.2500	-0.0008	1.750	1.760	3/16	0.80	2.6258	-0.0008	2.6247	-0.0008	4.2495	-0.0010	4.2508	-0.0010	64400	29900
MR-52	MI-44	2.7500	-0.0006	4.2500	-0.0008	1.750	1.760	3/16	0.80	2.7508	-0.0008	2.7497	-0.0008	4.2495	-0.0010	4.2508	-0.0010	64400	29900
MR-56-N	MI-48-N	3.0000	-0.0006	4.5000	-0.0008	1.750	1.760	3/16	0.80	3.0008	-0.0008	2.9997	-0.0008	4.4995	-0.0010	4.5008	-0.0010	71600	31300
MR-56	MI-46	2.8750	-0.0006	4.5000	-0.0008	2.000	2.010	3/16	0.80	2.8758	-0.0008	2.8747	-0.0008	4.4995	-0.0010	4.5008	-0.0010	83500	35900
MR-56	MI-47	2.9375	-0.0006	4.5000	-0.0008	2.000	2.010	3/16	0.80	2.9383	-0.0008	2.9372	-0.0008	4.4995	-0.0010	4.5008	-0.0010	83500	35900
MR-56	MI-48	3.0000	-0.0006	4.5000	-0.0008	2.000	2.010	3/16	0.80	3.0008	-0.0008	2.9997	-0.0008	4.4995	-0.0010	4.5008	-0.0010	83500	35900
MR-60	MI-50	3.1250	-0.0006	4.7500	-0.0008	2.000	2.010	3/16	1.00	3.126	-0.0010	3.1246	-0.0010	4.7495	-0.0010	4.7508	-0.0010	87100	36500
MR-60	MI-52	3.2500	-0.0006	4.7500	-0.0008	2.000	2.010	3/16	1.00	3.251	-0.0010	3.2496	-0.0010	4.7495	-0.0010	4.7508	-0.0010	87100	36500
MR-64	MI-54	3.3750	-0.0008	5.0000	-0.0010	2.000	2.010	3/16	1.00	3.3758	-0.0010	3.3746	-0.0010	4.9999	-0.0015	5.0011	-0.0015	93800	38000
MR-64	MI-56	3.5000	-0.0008	5.0000	-0.0010	2.000	2.010	3/16	1.00	3.5008	-0.0010	3.4996	-0.0010	4.9999	-0.0015	5.0011	-0.0015	93800	38000
MR-68	MI-58	3.6250	-0.0008	5.2500	-0.0010	2.000	2.010	3/16	1.00	3.6258	-0.0010	3.6246	-0.0010	5.2499	-0.0015	5.2511	-0.0015	101000	39500
MR-68	MI-60	3.7500	-0.0008	5.2500	-0.0010	2.000	2.010	3/16	1.00	3.7508	-0.0010	3.7496	-0.0010	5.2499	-0.0015	5.2511	-0.0015	101000	39500
MR-72	MI-62	3.8750	-0.0008	6.0000	-0.0010	2.250	2.260	3/16	1.00	3.8758	-0.0010	3.8746	-0.0010	5.9999	-0.0015	6.0011	-0.0015	130000	60300

**MI INNER RACES**

**POWER DRIVE**, MI series inner races, as shown in preceding pages with outer race and roller assemblies, are repeated below for convenience of application as hardened and ground steel bushings or sleeves. They are complete with radial oil holes and annular lubrication grooves. Inner races of special configurations and materials are available on special order to suit individual requirements.



POWER DRIVE INNER RING NUMBER	DIMENSIONS IN INCHES						
	A BORE DIA.		B INNER O.D.		W WIDTH +.000 -.005	H HOLE DIA.	R MAX. FILLET FOR SHAFT
	NOM.	TOL. +.0000	NOM.	TOL. +.0000			
MI-6	0.3750	-.0004	0.6245	-.0004	1.010	3/32	0.025
MI-6-N	0.3750	-.0004	0.6245	-.0004	0.760	3/32	0.025
MI-7-N	0.4375	-.0004	0.6245	-.0004	0.760	3/32	0.025
MI-8	0.5000	-.0004	0.7493	-.0005	1.010	1/8	0.04
MI-8-N	0.5000	-.0004	0.7493	-.0005	0.760	1/8	0.04
MI-9-N	0.5625	-.0004	0.7493	-.0005	0.760	1/8	0.04
MI-10	0.6250	-.0004	0.8743	-.0005	1.010	1/8	0.04
MI-10-N	0.6250	-.0004	0.8743	-.0005	0.760	1/8	0.04
MI-11-N	0.6875	-.0004	0.8743	-.0005	0.760	1/8	0.04
MI-12	0.7500	-.0004	0.9993	-.0005	1.010	1/8	0.04
MI-12-N	0.7500	-.0004	0.9993	-.0005	0.760	1/8	0.04
MI-13	0.8125	-.0005	0.9993	-.0005	1.010	1/8	0.04
MI-13-N	0.8125	-.0005	0.9993	-.0005	0.760	1/8	0.04
MI-14	0.8750	-.0005	1.1241	-.0005	1.260	1/8	0.04
MI-14-N	0.8750	-.0005	1.1241	-.0005	1.010	1/8	0.04
MI-15	0.9375	-.0005	1.1241	-.0005	1.260	1/8	0.04
MI-15-N	0.9375	-.0005	1.1241	-.0005	1.010	1/8	0.04
MI-16	1.0000	-.0005	1.2491	-.0006	1.260	1/8	0.04
MI-16-N	1.0000	-.0005	1.2491	-.0006	1.010	1/8	0.04
MI-17	1.0625	-.0005	1.3741	-.0006	1.260	1/8	0.04
MI-18	1.1250	-.0005	1.3741	-.0006	1.260	1/8	0.04
MI-18-N	1.1250	-.0005	1.3741	-.0006	1.010	1/8	0.04
MI-19	1.1875	-.0005	1.4490	-.0006	1.260	1/8	0.06
MI-20	1.2500	-.0005	1.4490	-.0006	1.260	1/8	0.06
MI-20-N	1.2500	-.0005	1.4990	-.0006	1.010	1/8	0.06
MI-21	1.3125	-.0005	1.6240	-.0006	1.260	1/8	0.06
MI-21-N	1.3125	-.0005	1.6240	-.0006	1.010	1/8	0.06

## MI INNER RACES

POWER DRIVE INNER RING NUMBER	DIMENSIONS IN INCHES						
	A BORE DIA.		B INNER O.D.		W WIDTH +.000 -.005	H HOLE DIA.	R MAX. FILLET FOR SHAFT
	NOM.	TOL. +.0000	NOM.	TOL. +.0000			
MI-22	1.3750	-.0005	1.7490	-.0006	1.26	1/8	0.06
MI-22-4S	1.3750	-.0005	1.6240	-.0006	1.26	1/8	0.06
MI-23	1.4375	-.0005	1.7490	-.0006	1.26	1/8	0.06
MI-24	1.5000	-.0005	1.7490	-.0006	1.26	1/8	0.06
MI-24-N	1.5000	-.0005	1.7490	-.0006	1.01	1/8	0.06
MI-25	1.5625	-.0005	1.9989	-.0007	1.26	1/8	0.06
MI-25-4S	1.5625	-.0005	1.8740	-.0006	1.26	1/8	0.06
MI-26	1.6250	-.0005	1.9989	-.0007	1.26	1/8	0.06
MI-26-2S	1.6250	-.0005	1.9364	-.0007	1.26	1/8	0.06
MI-26-N	1.6250	-.0005	1.9989	-.0007	1.01	1/8	0.06
MI-27	1.6875	-.0005	1.9989	-.0007	1.26	1/8	0.06
MI-28	1.7500	-.0005	2.2489	-.0007	1.76	3/16	0.06
MI-28-N	1.7500	-.0005	2.2489	-.0007	1.51	3/16	0.06
MI-30	1.8750	-.0005	2.2489	-.0007	1.76	3/16	0.06
MI-31	1.9375	-.0005	2.4989	-.0007	1.76	3/16	0.08
MI-32	2.0000	-.0005	2.4989	-.0007	1.76	3/16	0.08
MI-32-N	2.0000	-.0005	2.4989	-.0007	1.51	3/16	0.08
MI-34	2.1250	-.0006	2.4989	-.0007	1.76	3/16	0.08
MI-35	1.1875	-.0006	2.7489	-.0007	1.76	3/16	0.08
MI-36	2.2500	-.0006	2.7489	-.0007	1.76	3/16	0.08
MI-36-N	2.2500	-.0006	2.7489	-.0007	1.51	3/16	0.08
MI-38	2.3750	-.0006	2.9989	-.0007	1.76	3/16	0.08
MI-39	2.4375	-.0006	2.9989	-.0007	1.76	3/16	0.08
MI-40	2.5000	-.0006	2.9989	-.0007	1.76	3/16	0.08
MI-40-N	2.5000	-.0006	2.9989	-.0007	1.51	3/16	0.08
MI-42	2.6250	-.0006	3.2487	-.0009	1.76	3/16	0.08
MI-44	2.7500	-.0006	3.2487	-.0009	1.76	3/16	0.08
MI-46	2.8750	-.0006	3.4987	-.0009	2.01	1/4	0.08
MI-47	2.9375	-.0006	3.4987	-.0009	2.01	1/4	0.08
MI-48	3.0000	-.0006	3.4987	-.0009	2.01	1/4	0.08
MI-48-N	3.0000	-.0006	3.4987	-.0009	1.76	1/4	0.08
MI-50	3.1250	-.0006	3.7487	-.0009	2.01	1/4	0.1
MI-52	3.2500	-.0006	3.7487	-.0009	2.01	1/4	0.1
MI-54	3.3750	-.0008	3.9985	-.0009	2.01	1/4	0.1
MI-56	3.5000	-.0008	3.9985	-.0009	2.01	1/4	0.1
MI-58	3.6250	-.0008	4.2485	-.0009	2.01	1/4	0.1
MI-60	3.7500	-.0008	4.2485	-.0009	2.01	1/4	0.1
MI-62	3.8750	-.0008	4.4985	-.0009	2.26	1/4	0.1
MI-64	4.0000	-.0008	4.9985	-.0010	2.26	1/4	0.1
MI-68	4.2500	-.0008	4.9985	-.0010	2.26	1/4	0.1
MI-72	4.5000	-.0008	5.4985	-.0010	3.015	1/4	0.1
MI-72-N	4.5000	-.0008	5.4985	-.0010	2.515	1/4	0.1
MI-80	5.0000	-.0010	5.9983	-.0010	3.015	5/16	0.12
MI-80-N	5.0000	-.0010	5.9983	-.0010	2.515	5/16	0.12
MI-88	5.5000	-.0010	6.4983	-.0010	3.015	5/16	0.12
MI-88-N	5.5000	-.0010	6.4983	-.0010	2.515	5/16	0.12
MI-96	6.0000	-.0010	7.2481	-.0012	3.015	5/16	0.12
MI-104	6.5000	-.0010	7.7481	-.0012	3.015	5/16	0.12
MI-112	7.0000	-.0010	8.2481	-.0012	3.015	5/16	0.12
MI-120	7.5000	-.0012	8.7480	-.0012	3.015	5/16	0.16
MI-128	8.0000	-.0012	9.2480	-.0012	3.015	5/16	0.16

## INTERCHANGEABILITY CHART

Inner race only

POWER DRIVE	R.B.C.	McGILL	POWER DRIVE	R.B.C.	McGILL
MI-6-N		MI-6-N	MI-30	IR-8407-C1	MI-30
MI-6		MI-6	MI-31	IR-8447	MI-31
MI-7-N		MI-7-N	MI-32-N	IR-8446-C	MI-32-N
MI-8-N	IR-7153	MI-8-N	MI-32	IR-8447-C	MI-32
			MI-34	IR-8447-C1	MI-34
MI-8	IR-7154	MI-8	MI-35	IR-8477	MI-35
MI-9-N	IR-7153-C	MI-9-N	MI-36-N	IR-8476-C	MI-36-N
MI-10-N	IR-7173	MI-10-N	MI-36	IR-8477-C	MI-36
MI-10	IR-7174	MI-10	MI-38	IR-8517	MI-38
MI-11-N	IR-7173-C	MI-11-N	MI-39		MI-39
MI-12-N	IR-7193	MI-12-N	MI-40-N	IR-8516-C	MI-40-N
MI-12	IR-7194	MI-12	MI-40	IR-8517-C	MI-40
MI-13-N		MI-13-N	MI-42	IR-9567-D	MI-42
MI-13	IR-7194-C	MI-13	MI-44	IR-9567	MI-44
MI-14-N	IR-7214	MI-14-N	MI-46		MI-46
MI-14	IR-7215	MI-14			
MI-15-N		MI-15-N	MI-47	IR-9608	MI-47
MI-15	IR-7215-C	MI-15	MI-48-N		MI-48-N
MI-16-N	IR-7234	MI-16-N	MI-48	IR-9608-C	MI-48
MI-16	IR-7235	MI-16	MI-50	IR-9648	MI-50
MI-17	IR-7255-D	MI-17	MI-52	IR-9648-C	MI-52
MI-18-N	IR-7254	MI-18-N	MI-54	IR-9688	MI-54
MI-18	IR-7255	MI-18	MI-56	IR-9688-C	MI-56
MI-19	IR-7275	MI-19	MI-58	IR-9728-C	MI-58
MI-20-N		MI-20-N	MI-60	IR-9728-C1	MI-60
MI-20	IR-7275-C	MI-20	MI-62	IR-6769-C	MI-62
MI-21-N	IR-7294	MI-21-N	MI-64	IR-6849	MI-64
MI-21	IR-7295	MI-21	MI-68	IR-6849-C	MI-68
MI-22-4S	IR-7295-C	MI-22-4S	MI-72-N	IR-6918	MI-72-N
MI-22		MI-22	MI-72	IR-6919	MI-72
MI-23	IR-7315	MI-23	MI-80-N	IR-6925	MI-80-N
MI-24-N		MI-24-N			
MI-24	IR-7315-C	MI-24	MI-80	IR-6926	MI-80
MI-25-4S	IR-7335	MI-25-4S	MI-88-N	IR-6935	MI-88-N
MI-25		MI-25	MI-88	IR-6936	MI-88
MI-26-2S	IR-7345	MI-26-2S	MI-96	IR-2326	MI-96
MI-26-N		MI-26-N			
MI-26	IR-7355-D	MI-26	MI-104	IR-2426	MI-104
MI-27	IR-7355	MI-27	MI-112	IR-2526	MI-112
MI-28-N	IR-8406	MI-28-N	MI-120	IR-2626	MI-120
MI-28	IR-8407	MI-28	MI-128	IR-2726	MI-128

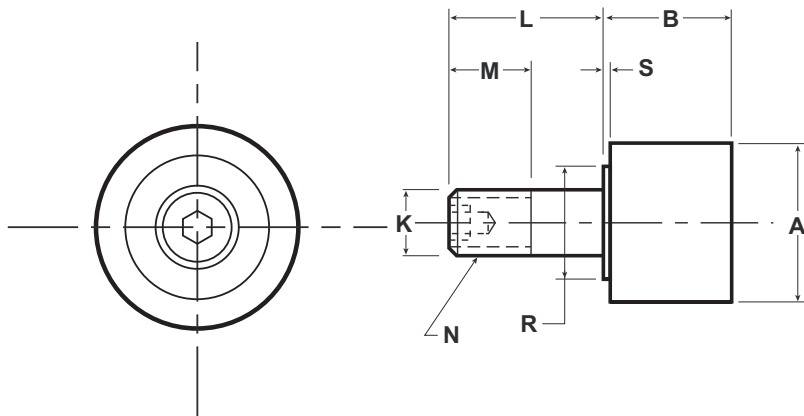
## INTERCHANGEABILITY CHART

Sealed Outer ring, roller and inner ring assemblies only

POWER DRIVE		* TORRINGTON		R.B.C.		McGILL NUMBER	
OUTER	INNER	OUTER	INNER	OUTER	INNER	OUTER	INNER
10-SS	MI-6	HJRR-101816		SJ-7134-RR	IR-7134	10-SS	MI-6
12-SS	MI-8	HJRR-122016	IR-081216	SJ-7154-RR	IR-7154	12-SS	MI-8
14-SS	MI-10	HJRR-142216	IR-101416	SJ-7174-RR	IR-7174	14-SS	MI-10
16-SS	MI-12	HJRR-162416	IR-121616	SJ-7194-RR	IR-7194	16-SS	MI-12
16-SS	MI-13	HJRR-162416	IR-131616	SJ-7194-RR	IR-7194-C	16-SS	MI-13
18-SS	MI-14	HJRR-182620	IR-141820	SJ-7215-RR	IR-7215	18-SS	MI-14
18-SS	MI-15	HJRR-182620	IR-151820	SJ-7215-RR	IR-7215-C	18-SS	MI-15
20-SS	MI-16	HJRR-202820	IR-162020	SJ-7235-RR	IR-7235	20-SS	MI-16
22-SS	MI-17			SJ-7255-RR	IR-7255-D	22-SS	MI-17
22-SS	MI-18	HJRR-223020	IR-182220	SJ-7255-RR	IR-7255	22-SS	MI-18
24-SS	MI-19	HJRR-243320	IR-192420	SJ-7275-RR	IR-7275	24-SS	MI-19
24-SS	MI-20	HJRR-243320	IR-202420	SJ-7275-RR	IR-7275-C	24-SS	MI-20
26-SS	MI-21	HJRR-263520	IR-212620	SJ-7295-RR	IR-7295	26-SS	MI-21
26-SS	MI-22-4S	HJRR-263520	IR-222620	SJ-7295-RR	IR-7295-C	26-SS	MI-22-4S
28-SS	MI-22	HJRR-283720	IR-222820			28-SS	MI-22
28-SS	MI-23	HJRR-283720	IR-232820	SJ-7315-RR	IR-7315	28-SS	MI-23
28-SS	MI-24	HJRR-283720	IR-242820	SJ-7315-RR	IR-7315-C	28-SS	MI-24
30-SS	MI-25			SJ-7335-RR	IR-7335	30-SS	MI-25
32-SS	MI-25-4S	HJRR-324120	IR-253220			32-SS	MI-25-4S
32-SS	MI-26	HJRR-324120	IR-263220	SJ-7355-RR	IR-7355-D	32-SS	MI-26
32-SS	MI-27	HJRR-324120	IR-273220	SJ-7355-RR	IR-7355	32-SS	MI-27
					IR-8407		
36-SS	MI-28	HJRR-364828	IR-283628	SJ-8407-RR	IR-8407--	36-SS	MI-28
36-SS	MI-30			SJ-8407-RR	CI1	36-SS	MI-30
40-SS	MI-31	HJRR-405228	IR-314028	SJ-8447-RR	IR-8447	40-SS	MI-31
40-SS	MI-32	HJRR-405228	IR-324028	SJ-8447-RR	IR-8447-C	40-SS	MI-32
40-SS	MI-34			SJ-8447-RR	IR-8447--	40-SS	MI-34
					CI1		
44-SS	MI-35	HJRR-445628	IR-354428	SJ-8477-RR	IR-8477	44-SS	MI-35
44-SS	MI-36	HJRR-445628	IR-364428	SJ-8477-RR	IR-8477-C	44-SS	MI-36
48-SS	MI-38	HJRR-486028	IR-384828	SJ-8517-RR	IR-8517	48-SS	MI-38
48-SS	MI-39					48-SS	MI-39
48-SS	MI-40	HJRR-486028	IR-404828	SJ-8517-RR	IR-8517-C	48-SS	MI-40
52-SS	MI-42					52-SS	MI-42
52-SS	MI-44					52-SS	MI-44
56-SS	MI-46					56-SS	MI-46
56-SS	MI-47			SJ-9608-RR	IR-9608	56-SS	MI-47
56-SS	MI-48			SJ-9608-RR	IR-9608-C	56-SS	MI-48
60-SS	MI-50			SJ-9648-RR	IR-9648	60-SS	MI-50
60-SS	MI-52			SJ-9648-RR	IR-9648-C	60-SS	MI-52
64-SS	MI-54			SJ-9688-RR	IR-9688	64-SS	MI-54
64-SS	MI-56			SJ-9688-RR	IR-9688-C	64-SS	MI-56
68-SS	MI-58					68-SS	MI-58
68-SS	MI-60					68-SS	MI-60

GR prefix indicates center guide full complement construction.  
MR prefix indicates retainer type construction.

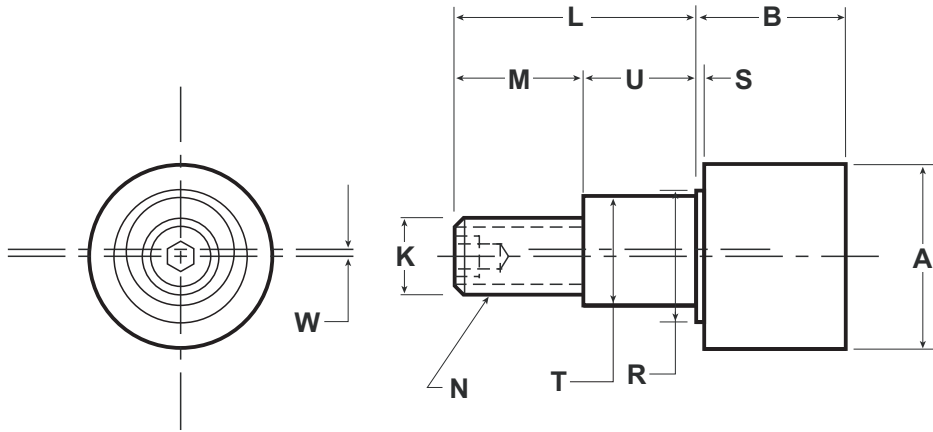
**PLAIN TRACK ROLLER**



**PLR SERIES**

Part No.	A	B	K	L	M	N	R	S	Rec. Mtg. Hole Size	Mounting Member		Bearing Capacity, Static Thrust (lbs)	Stud Capacity Shear (lbs)
	Roller Dia	Roller Width	Stud Dia.	Stud Length	Thread Length	Thread	Shoulder Dia.	Shoulder Legnth		Max	Min		
PLR-1	1	0.781	0.437	1	0.5	7/16-20	0.5	0.031	0.438	0.625	0.5	140	1970
PLR-1-1/8	1.125	0.781	0.437	1	0.5	7/16-20	0.5	0.031	0.438	0.625	0.5	140	1970
PLR-1-1/4	1.25	0.844	0.5	1.25	0.625	1/2-20	0.625	0.031	0.501	0.75	0.625	370	3250
PLR-1-3/8	1.375	0.844	0.5	1.25	0.625	1/2-20	0.625	0.031	0.501	0.75	0.625	370	3250
PLR-1-1/2	1.5	1.187	0.625	1.5	0.75	5/8-18	0.75	0.062	0.626	1	0.75	680	5780
PLR-1-3/4	1.75	1.187	0.75	1.75	0.875	3/4-16	1	0.062	0.751	1.125	0.875	680	5780
PLR-1-3/4-1	1.75	1.437	0.5	0.875	0.75	1/2-13NC	0.625	0.312	0.501	-	-	595	4480
PLR-2	2	1.687	0.875	2	1.125	7/8-14	1	0.062	0.876	1.25	0.875	1000	11610
PLR-2-3	2	1.375	0.875	2	1.125	7/8-14	1	0.062	0.876	1.25	0.875	1000	11610
PLR-2-1/4	2.25	1.687	0.875	2	1.125	7/8-14	1	0.062	0.876	1.25	0.875	1000	11610
PLR-2-1/2	2.5	1.687	1	2.25	1.5	1-14	1.25	0.062	1.001	1.25	0.75	1400	14580
PLR-2-1/2-1	2.5	1.812	1	2.25	1.5	1-14	1.25	0.187	1.001	1.25	0.75	1400	14580
PLR-2-3/4	2.75	1.687	1	2.25	1.5	1-14	1.25	0.062	1.001	1.25	0.75	1400	14580
PLR-3	3	2	1.25	2.5	1.75	1-1/4-12	1.75	0.062	1.251	1.25	1	12000	40500
PLR-3-1/4	3.25	2	1.25	2.5	1.75	1-1/4-12	1.75	0.062	1.251	1.25	1	12000	40500
PLR-3-1/2	3.5	2	1.25	2.75	1.75	1-1/4-12	1.75	0.062	1.251	1.5	1.25	12000	40500
PLR-4	4	2	1.25	2.75	1.75	1-1/4-12	1.75	0.062	1.251	1.5	1.25	12000	40500
PLR-4-1/2	4.5	2	1.25	2.75	1.75	1-1/4-12	1.75	0.062	1.251	1.5	1.25	12000	40500
PLR-5	5	3	2	4.5	2.5	2-12	3.25	0.062	2.001	2.75	2	32500	103670
PLR-6	6	3	2.5	5.5	3.25	2-1/2-12	3.25	0.062	2.501	3.25	2	33100	161990
PLR-7	7	3	2.5	5.5	3.25	2-1/2-12	3.25	0.062	2.501	3.25	2	33100	161990
PLR-8	8	3	2.5	5.5	3.25	2-1/2-12	3.25	0.062	2.501	3.25	2	33100	161990
PLR-10	10	3	2.5	5.5	3.25	2-1/2-12	3.25	0.062	2.501	3.25	2	33100	161990
PLR-10-1	10	5	4.25	9	4	3-1/2-4NC	5	0.125	4.252	5.75	5.125	116000	468150

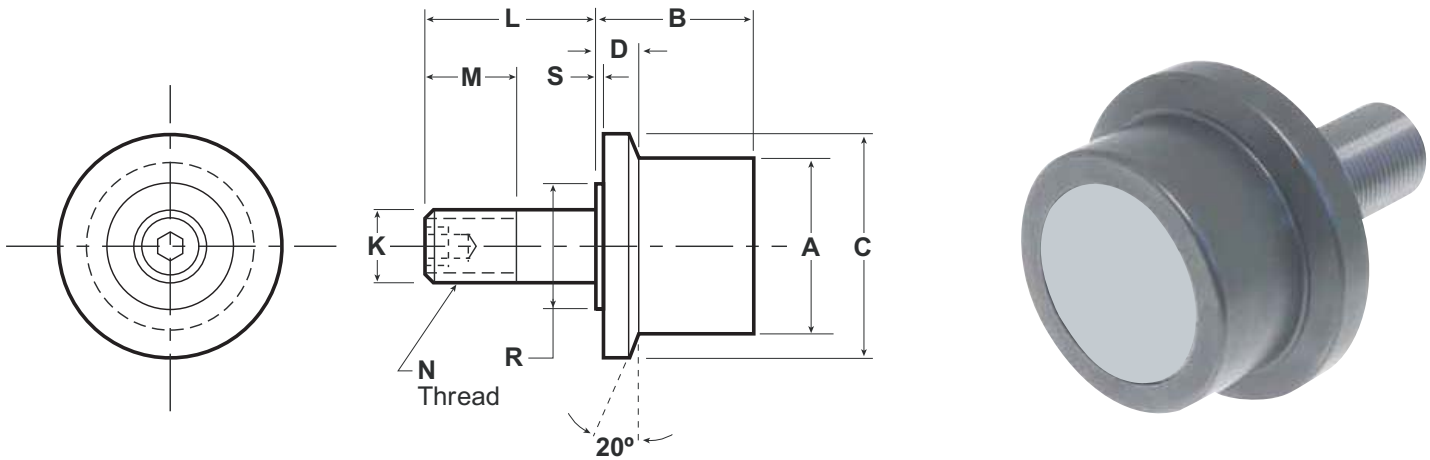
**PLAIN ECCENTRIC TRACK ROLLER**



**PLRE SERIES**

Part No.	A	B	K	L	M	N	R	S	T	U	W	Rec. Mtg. Hole Size	Mounting Member		Bearing Capacity, Static Thrust (lbs)	Stud Capacity Shear (lbs)
	Roller Dia	Roller Width	Stud Dia.	Stud Length	Thread Length	Thread	Shoulder Dia.	Shoulder Legnth	Eccentric Dia.	Eccentric Length	Eccentricity		Max	Min		
PLRE-1	1.000	0.781	0.437	1.000	0.500	7/16-20	0.750	0.031	0.625	0.5	0.03	0.627	0.625	0.5	140	1970
PLRE-1-1/8	1.125	0.781	0.437	1.000	0.500	7/16-20	0.750	0.031	0.625	0.5	0.03	0.627	0.625	0.5	140	1970
PLRE-1-1/4	1.250	0.844	0.500	1.250	0.625	1/2-20	0.812	0.031	0.687	0.625	0.03	0.689	0.75	0.625	370	3250
PLRE-1-3/8	1.375	0.844	0.500	1.250	0.625	1/2-20	0.812	0.031	0.687	0.625	0.03	0.689	0.75	0.625	370	3250
PLRE-1-1/2	1.500	1.188	0.625	1.500	0.770	5/8-18	1.125	0.062	0.875	0.73	0.03	0.877	0.875	0.75	680	5780
PLRE-1-3/4	1.750	1.188	0.750	1.750	0.895	3/4-16	1.240	0.062	1	0.855	0.03	1.002	1	0.875	680	5780
PLRE-2	2.000	1.688	0.875	2.000	1.020	7/8-14	1.500	0.062	1.187	0.98	0.03	1.189	1.125	1	1000	11610
PLRE-2-1/4	2.250	1.688	0.875	2.000	1.020	7/8-14	1.500	0.062	1.187	0.98	0.03	1.189	1.125	1	1000	11610
PLRE-2-1/2	2.500	1.688	1.000	2.250	1.145	1-14	1.687	0.062	1.375	1.105	0.03	1.377	1.25	1.125	1400	14580
PLRE-2-1/2-1	2.500	1.812	1.000	2.250	1.145	1-14	1.687	0.062	1.375	1.105	0.03	1.377	1.25	1.125	4570	29920
PLRE-2-3/4	2.750	1.688	1.000	2.250	1.145	1-14	1.687	0.062	1.375	1.105	0.03	1.377	1.25	1.125	1400	14580
PLRE-3	3.000	2.000	1.250	2.500	1.270	11/4-12	2.312	0.062	1.75	1.23	0.06	1.752	1.375	1.25	12000	40500
PLRE-3-1/4	3.250	2.000	1.250	2.500	1.270	11/4-12	2.312	0.062	1.75	1.23	0.06	1.752	1.375	1.25	12000	40500
PLRE-3-1/2	3.500	2.000	1.250	2.750	1.395	11/4-12	2.312	0.062	1.812	1.355	0.06	1.814	1.5	1.375	12000	40500
PLRE-4	4.000	2.000	1.250	2.750	1.395	11/4-12	2.312	0.062	1.812	1.355	0.06	1.814	1.5	1.375	12000	40500
PLRE-5	5.000	3.000	2.000	4.500	2.375	2-12	3.250	0.062	2.625	2.125	0.06	2.627	2.5	2.25	32500	103670
PLRE-6	6.000	3.000	2.500	5.500	2.625	21/2-12	3.625	0.062	3.125	2.875	0.06	3.127	3.25	3	33100	161990

**FLANGED TRACK ROLLER**

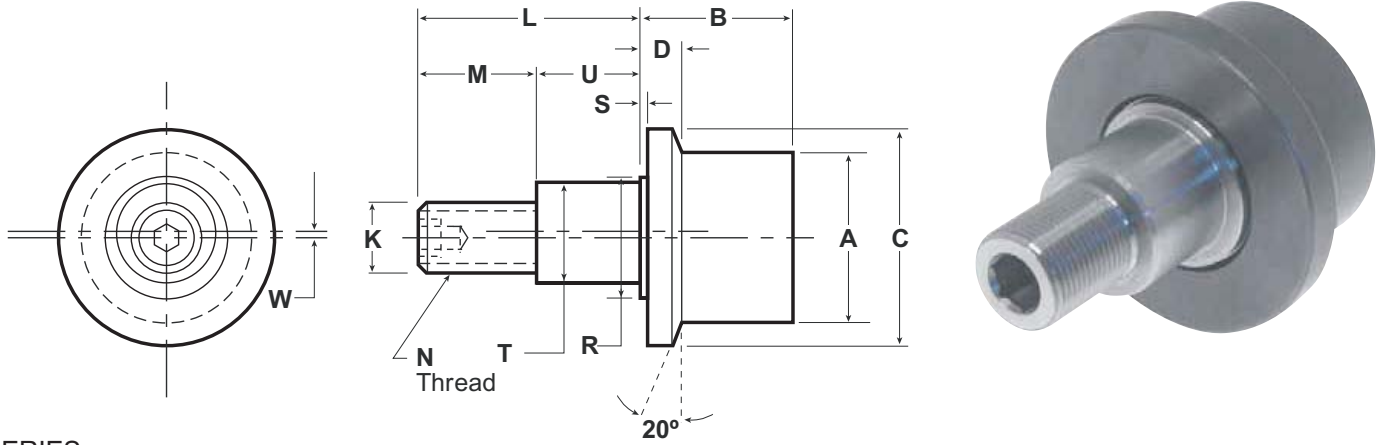


**FLR SERIES**

Part No.	A	B	C	D	K	L	M	N	R	S	Rec.Mtg. Hole Size	Mounting Member		Bearing Capacity, Static Thrust (lbs)	Stud Capacity Shear (lbs)
	Roller Dia	Roller Width	Flange Dia	Flange Thickness	Stud Dia	Stud Legnth	Thread Legnth	Thread	Sholder Dia	Sholder Legnth		Max	Min		
FLR-1	1.000	0.781	1.375	0.219	0.437	1.000	0.500	7/16-20	0.500	0.031	0.438	0.625	0.5	140	1970
FLR-1-1/8	1.125	0.781	1.500	0.219	0.437	1.000	0.500	7/16-20	0.500	0.031	0.438	0.625	0.5	140	1970
FLR-1-1/4	1.250	0.844	1.563	0.219	0.500	1.250	0.625	1/2-20	0.625	0.031	0.501	0.75	0.625	370	3250
FLR-1-3/8	1.375	0.844	1.688	0.219	0.500	1.250	0.625	1/2-20	0.625	0.031	0.501	0.75	0.625	370	3250
FLR-1-1/2	1.500	1.188	2.188	0.343	0.625	1.500	0.750	5/8-18	0.750	0.062	0.626	1	0.75	680	5780
FLR-1-1/2-1	1.500	1.063	2.000	0.343	0.500	1.375	0.750	1/2-20	0.625	0.125	0.501	1	0.75	600	4020
FLR-1-3/4	1.750	1.188	2.438	0.343	0.750	1.750	0.875	3/4-16	1.000	0.062	0.751	1.125	0.875	680	5780
FLR-2	2.000	1.688	2.688	0.593	0.875	2.000	1.125	7/8-14	1.000	0.062	0.876	1.25	0.875	1000	11610
FLR-2-1/4	2.250	1.688	2.938	0.593	0.875	2.000	1.125	7/8-14	1.000	0.062	0.876	1.25	0.875	1000	11610
FLR-2-1/2	2.500	1.688	3.188	0.593	1.000	2.250	1.500	1-14	1.250	0.062	1.001	1.25	0.75	1400	14580
FLR-2-1/2-1	2.500	1.812	3.188	0.593	1.000	2.250	1.500	1-14	1.250	0.062	1.001	1.25	0.75	4570	25920
FLR-2-3/4	2.750	1.688	3.438	0.593	1.000	2.250	1.500	1-14	1.250	0.062	1.001	1.25	0.75	1400	14580
FLR-3	3.000	2.000	3.938	0.593	1.250	2.500	1.750	11/4-12	1.750	0.062	1.251	1.25	1	12000	40500
FLR-3-1/4	3.250	2.000	4.188	0.593	1.250	2.500	1.750	11/4-12	1.750	0.062	1.251	1.25	1	12000	40500
FLR-3-1/2	3.500	2.000	4.438	0.593	1.250	2.750	1.750	11/4-12	1.750	0.062	1.251	1.25	1	12000	40500
FLR-4	4.000	2.000	4.938	0.593	1.250	2.750	1.750	11/4-12	1.750	0.062	1.251	1.25	1	12000	40500
FLR-4-1	4.000	2.000	4.938	1.000	1.250	2.750	1.750	11/4-12	1.750	0.062	1.251	1.25	1	12000	40500
FLR-4-1/2	4.500	2.000	5.438	0.593	1.250	2.750	1.750	11/4-12	1.750	0.062	1.251	1.25	1	12000	40500
FLR-5	5.000	3.000	5.938	0.718	2.000	4.500	2.500	2-12	3.250	0.062	2.001	2.75	2	32500	103670
FLR-6	6.000	3.000	6.938	0.718	2.500	5.500	3.250	21/2-12	3.250	0.062	2.501	3.25	2	33100	161990
FLR-7	7.000	3.000	7.938	0.718	2.500	5.500	3.250	21/2-12	3.250	0.062	2.501	3.25	2	33100	161990
FLR-8	8.000	3.000	8.938	0.718	2.500	5.500	3.250	21/2-12	3.250	0.062	2.501	3.25	2	33100	161990



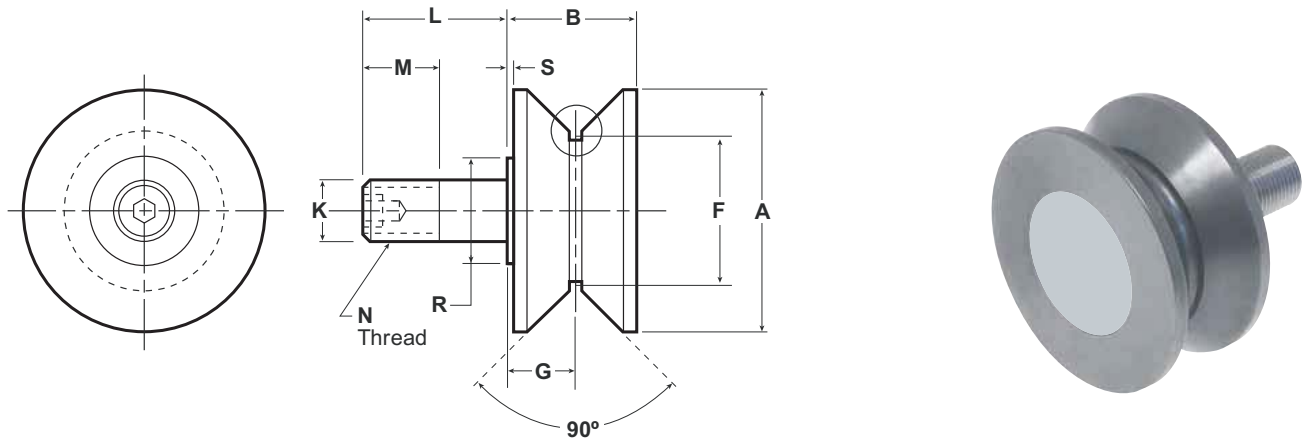
**FLANGED ECCENTRIC TRACK ROLLER**



**FLRE SERIES**

Part No.	A	B	C	D	K	L	M	N	R	S	S	U	W	Rec.Mtg. Hole Size	Mounting Member		Bearing Capacity, Static Thrust (lbs)	Stud Capacity Shear (lbs)
	Roller Dia	Roller Width	Flange Dia	Flange Thickness	Stud Dia	Stud Legnth	Thread Legnth	Thread	Sholder Dia	Sholder Legnth	Eccentric Dia.	Eccentric Legnth	Eccentricity		Max	Min		
FLRE-1	1.000	0.781	1.375	0.219	0.437	1.000	0.500	7/16-20	0.750	0.031	0.030	0.625	0.031	0.500	0.627	0.500	140.000	1970.000
FLRE-1-1/8	1.125	0.781	1.500	0.219	0.437	1.000	0.500	7/16-20	0.750	0.031	0.030	0.625	0.031	0.500	0.627	0.500	140.000	1970.000
FLRE-1-1/4	1.250	0.844	1.563	0.219	0.500	1.250	0.625	1/2-20	0.812	0.031	0.030	0.687	0.031	0.625	0.689	0.625	370.000	3250.000
FLRE-1-3/8	1.375	0.844	1.688	0.219	0.500	1.250	0.625	1/2-20	0.812	0.031	0.030	0.687	0.031	0.625	0.689	0.625	370.000	3250.000
FLRE-1-1/2	1.500	1.187	2.188	0.343	0.625	1.500	0.770	5/8-18	1.125	0.062	0.030	0.875	0.062	0.730	0.877	0.750	680.000	5780.000
FLRE-1-3/4	1.750	1.187	2.438	0.343	0.750	1.750	0.895	3/4-16	1.240	0.062	0.030	1.000	0.062	0.855	1.002	0.875	680.000	5780.000
FLRE-2	2.000	1.688	2.688	0.593	0.875	2.000	1.020	7/8-14	1.500	0.062	0.030	1.187	0.062	0.980	1.189	1.000	1000.000	11610.000
FLRE-2-1/4	2.250	1.688	2.938	0.593	0.875	2.000	1.020	7/8-14	1.500	0.062	0.030	1.187	0.062	0.980	1.189	1.000	1000.000	11610.000
FLRE-2-1/2	2.500	1.688	3.188	0.593	1.000	2.250	1.145	1-14	1.687	0.062	0.030	1.375	0.062	1.105	1.377	1.125	1400.000	14580.000
FLRE-2-1/2-1	2.500	1.812	3.188	0.593	1.000	2.250	1.145	1-14	1.687	0.062	0.030	1.375	0.062	1.105	1.377	1.125	4570.000	29920.000
FLRE-2-3/4	2.750	1.688	3.438	0.593	1.000	2.250	1.145	1-14	1.687	0.062	0.030	1.375	0.062	1.105	1.377	1.125	1400.000	14580.000
FLRE-3	3.000	2.000	3.938	0.593	1.250	2.500	1.270	1 1/4-12	2.312	0.062	0.060	1.750	0.062	1.230	1.752	1.250	12000.000	40500.000
FLRE-3-1/4	3.250	2.000	4.188	0.593	1.250	2.500	1.270	1 1/4-12	2.312	0.062	0.060	1.750	0.062	1.230	1.752	1.250	12000.000	40500.000
FLRE-3-1/2	3.500	2.000	4.438	0.593	1.250	2.750	1.395	1 1/4-12	2.312	0.062	0.060	1.812	0.062	1.355	1.814	1.375	12000.000	40500.000
FLRE-4	4.000	2.000	4.938	0.593	1.250	2.750	1.395	1 1/4-12	2.312	0.062	0.060	1.812	0.062	1.355	1.814	1.375	12000.000	40500.000
FLRE-4-1/2	4.500	2.000	5.438	0.593	1.250	2.750	1.395	1 1/4-12	2.312	0.062	0.060	1.812	0.062	1.355	1.814	1.375	12000.000	40500.000
FLRE-5	5.000	3.000	5.938	0.718	2.000	4.500	2.375	2-12	3.250	0.062	0.060	2.625	0.062	2.125	2.627	2.250	32500.000	103670.000
FLRE-6	6.000	3.000	6.938	0.718	2.500	5.500	2.625	2 1/2-12	3.625	0.062	0.060	3.125	0.062	2.875	3.127	3.000	33100.000	161990.000

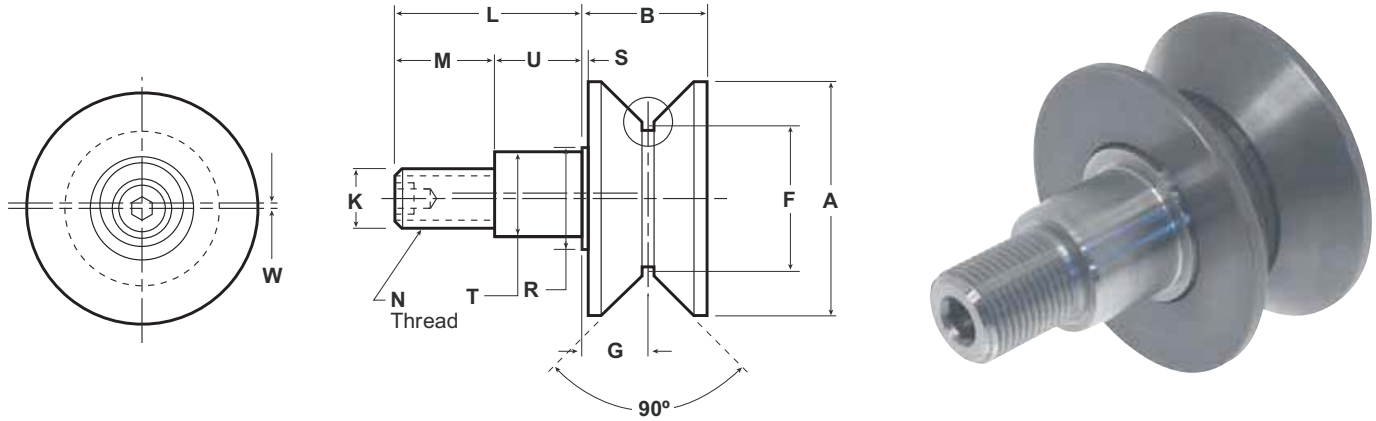
**V-GROOVED TRACK ROLLER**



**VLR SERIES**

Part No.	A	B	C	D	K	L	M	N	R	S	Rec.Mtg. Hole Size	Mounting Member		Bearing Capacity, Static Thrust (lbs)	Stud Capacity Shear(lbs)
	Roller Dia	Roller Width	Flange Dia	Flange Thickness	Stud Dia	Stud Length	Thread Length	Thread	Sholder Dia	Sholder Length		Max	Min		
VLR-1-1/2	1.500	0.781	1.125	0.391	0.437	1.000	0.500	7/16-20	0.500	0.031	0.438	0.625	0.500	140	1970
VLR-2	2.000	0.844	1.375	0.422	0.500	1.250	0.625	1/2-20	0.625	0.031	0.500	0.750	0.625	370	3250
VLR-2-1/2	2.500	1.312	1.500	0.687	0.750	1.750	0.875	3/4-16	1.000	0.062	0.751	1.250	1.000	680	5780
VLR-3-1/2	3.500	1.687	2.250	0.875	0.875	2.000	1.125	7/8-14	1.000	0.062	0.876	1.250	1.000	1400	14580
VLR-3-1/2-1	3.500	2.000	2.250	0.875	0.750	2.000	1.125	3/4-16	1.250	0.062	0.751	1.250	1.000	3150	14580
VLR-4-1/2	4.500	2.000	3.000	1.000	1.250	2.500	1.750	11/4-12	1.750	0.062	1.251	1.250	1.000	12000	40500
VLR-5-1/2	5.500	2.000	4.000	1.000	1.250	2.750	1.750	11/4-12	1.750	0.062	1.251	1.500	1.250	12000	40500
VLR-6-1/2	6.500	3.000	5.000	1.500	2.000	4.500	2.500	2-12	3.250	0.062	2.001	3.000	2.000	33100	103670
VLR-7-1/2	7.500	3.000	6.000	1.500	2.500	5.500	3.250	21/2-12	3.250	0.062	2.501	3.250	2.250	33100	161990
VLR-8-1/2	8.500	3.000	7.000	1.500	2.500	5.500	3.250	21/2-12	3.250	0.062	2.501	3.250	2.250	33100	161990

**V-GROOVED ECCENTRIC TRACK ROLLER**



**VLRE SERIES**

Part No.	A Roller Dia	B Roller Width	C Flange Dia	D Flange Thickness	K Stud Dia	L Stud Legnth	M Thread Legnth	N Thread	R Sholder Dia	S Sholder Legnth	T Eccentric Dia	U Eccentric Length	W Eccentricity	Rec.Mtg. Hole Size	Mounting Member		Bearing Capacity, Static Thrust (lbs)	Stud Capacity Shear (lbs)
															Max	Min		
VLRE-1-1/2	1.500	0.731	1.125	0.391	0.437	1.000	0.500	7/16-20	0.750	0.031	0.625	0.500	0.030	0.627	0.625	0.500	140	1970
VLRE-2	2.000	0.844	1.375	0.422	0.500	1.250	0.625	1/2-20	0.812	0.031	0.687	0.625	0.030	0.689	0.750	0.625	370	3250
VLRE-2-1/2	2.500	1.312	1.500	0.687	0.750	1.750	0.895	3/4-16	1.375	0.062	1.000	0.855	0.030	1.002	1.000	0.875	680	5780
VLRE-3-1/2	3.500	1.687	2.250	0.875	0.875	2.000	1.020	7/8-14	1.500	0.062	1.187	0.980	0.030	1.189	1.125	1.000	1400	14580
VLRE-3-1/2-1	3.500	1.890	2.250	0.875	0.750	2.000	1.020	3/4-16	1.500	0.125	1.187	0.980	0.030	1.189	1.125	1.000	3150	14580
VLRE-4-1/2	4.500	2.000	3.000	1.000	1.250	2.500	1.270	1 1/4-12	2.312	0.062	1.750	1.230	0.060	1.752	1.375	1.250	12000	40500
VLRE-5-1/2	5.500	2.000	4.000	1.000	1.250	2.750	1.395	1 1/4-12	2.312	0.062	1.812	1.355	0.060	1.814	1.500	1.325	12000	40500
VLRE-6-1/2	6.500	3.000	5.000	1.500	2.000	4.500	2.375	2-12	3.250	0.062	2.625	2.125	0.060	2.627	2.500	2.250	33100	103670
VLRE-7-1/2	7.500	3.000	6.000	1.500	2.500	5.500	2.625	2 1/2-12	3.625	0.062	3.125	2.875	0.060	3.127	3.250	3.000	33100	161990

## INTERCHANGEABILITY CHART

## Plain Track Roller

POWERDRIVE	SMITH®	Mc Gill	OSBORN	PCI
PLR-1			PLR-1	PTR-1.00
PLR-1-1/8			PLR-1-1/8	PTR-1.125
PLR-1-1/4			PLR-1-1/4	PTR-1.25
PLR-1-3/8			PLR-1-3/8	PTR-1.375
PLR-1-1/2	PCR-1-1/2	PCF-1-1/2	PLR-1-1/2	PTR-1.50
PLR-1-3/4	PCR-1-3/4	PCF-1-3/4	PLR-1-3/4	PTR-1.75
PLR-1-3/4-1			PLR-1-3/4-5	PTR-1.75-5
PLR-2	PCR-2	PCF-2	PLR-2	PTR-2.00
PLR-2-1			PLR-2-3	
PLR-2-1/4	PCR-2-1/4	PCF-2-1/4	PLR-2-1/4	PTR-2.25
PLR-2-1/2	PCR-2-1/2	PCF-2-1/2	PLR-2-1/2	PTR-2.50
PLR-2-1/2-1			PLR-2-1/2-10	
PLR-2-3/4	PCR-2-3/4	PCF-2-3/4	PLR-2-3/4	PTR-2.75
PLR-3	PCR-3	PCF-3	PLR-3	PTR-3.00
PLR-3-1/4	PCR-3-1/4	PCF-3-1/4	PLR-3-1/4	PTR-3.25
PLR-3-1/2	PCR-3-1/2	PCF-3-1/2	PLR-3-1/2	PTR-3.50
PLR-4	PCR-4	PCF-4	PLR-4	PTR-4.00
PLR-4-1/2	PCR-4-1/2	PCF-4-1/2	PLR-4-1/2	PTR-4.50
PLR-5	PCR-5	PCF-5	PLR-5	PTR-5.00
PLR-6	PCR-6	PCF-6	PLR-6	PTR-6.00
PLR-7	PCR-7	PCF-7	PLR-7	PTR-7.00
PLR-8	PCR-8	PCF-8	PLR-8	PTR-8.00
PLR-10			PLR-10	PTR-10.00
PLR-10-1			PLR-10-1	PTR-10.00-8

## Flanged Track Roller

POWERDRIVE	SMITH®	Mc Gill	OSBORN	PCI
FLR-1			FLR-1	FTR-1.00
FLR-1-1/8			FLR-1-1/8	FTR-1.125
FLR-1-1/4			FLR-1-1/4	FTR-1.25
FLR-1-3/8			FLR-1-3/8	FTR-1.375
FLR-1-1/2	FCR-1-1/2	FCF-1-1/2	FLR-1-1/2	FTR-1.50
FLR-1-1/2-1			FLR-1-1/2-2	FTR-1.50-2
FLR-1-3/4	FCR-1-3/4	FCF-1-3/4	FLR-1-3/4	FTR-1.75
FLR-2	FCR-2	FCF-2	FLR-2	FTR-2
FLR-2-1/4	FCR-2-1/4	FCF-2-1/4	FLR-2-1/4	FTR-2.25
FLR-2-1/2	FCR-2-1/2	FCF-2-1/2	FLR-2-1/2	FTR-2.50
FLR-2-1/2-1			FLR-2-1/2-1	
FLR-2-3/4	FCR-2-3/4	FCF-2-3/4	FLR-2-3/4	FTR-2.75
FLR-3	FCR-3	FCF-3	FLR-3	FTR-3
FLR-3-1/4	FCR-3-1/4	FCF-3-1/4	FLR-3-1/4	FTR-3.25
FLR-3-1/2	FCR-3-1/2	FCF-3-1/2	FLR-3-1/2	FTR-3.50
FLR-4	FCR-4	FCF-4	FLR-4	FTR-4
FLR-4-1			FLR-4M	
FLR-4-1/2	FCR-4-1/2	FCF-4-1/2	FLR-4-1/2	FTR-4.50
FLR-5	FCR-5	FCF-5	FLR-5	FTR-5.00
FLR-6	FCR-6	FCF-6	FLR-6	FTR-6.00
FLR-7	FCR-7	FCF-7	FLR-7	FTR-7.00
FLR-8	FCR-8	FCF-8	FLR-8	FTR-8.00

## V-Grooved Track Roller

POWERDRIVE	SMITH®	Mc Gill	OSBORN	PCI
VLR-1-1/2			VLR-1-1/2	VTR-1.50
VLR-2			VLR-2	VTR-2
VLR-2-1/2		VCF-2-1/2	VLR-2-1/2	VTR-2.50
VLR-3-1/2	VCR-3-1/2	VCF-3-1/2	VLR-3-1/2	VTR-3.50
VLR-3-1/2-1			VLR-3-1/2-16	VTR-3.50E
VLR-4-1/2	VCR-4-1/2	VCF-4-1/2	VLR-4-1/2	VTR-4.50
VLR-5-1/2	VCR-5-1/2	VCF-5-1/2	VLR-5-1/2	VTR-5.50
VLR-6-1/2	VCR-6-1/2	VCF-6-1/2	VLR-6-1/2	VTR-6.50
VLR-7-1/2	VCR-7-1/2	VCF-7-1/2	VLR-7-1/2	VTR-7.50
VLR-8-1/2	VCR-8-1/2	VCF-8-1/2	VLR-8-1/2	VTR-8.50

**INTERCHANGEABILITY CHART**

**Plain Eccentric Track Roller**

POWERDRIVE	SMITH®	Mc Gill	OSBORN	PCI
PLRE-1			PLRE-1	PTRE-1.00
PLRE-1-1/8			PLRE-1-1/8	PTRE-1.125
PLRE-1-1/4			PLRE-1-1/4	PTRE-1.25
PLRE-1-3/8			PLRE-1-3/8	PTRE-1.375
PLRE-1-1/2	PCRE-1-1/2	PCFE-1-1/2	PLRE-1-1/2	PTRE-1.50
PLRE-1-3/4	PCRE-1-3/4	PCFE-1-3/4	PLRE-1-3/4	PTRE-1.75
PLRE-2	PCRE-2	PCFE-2	PLRE-2	PTRE-2.00
PLRE-2-1/4	PCRE-2-1/4	PCFE-2-1/4	PLRE-2-1/4	PTRE-2.25
PLRE-2-1/2	PCRE-2-1/2	PCFE-2-1/2	PLRE-2-1/2	PTRE-2.50
PLRE-2-1/2-1			PLRE-2-1/2-7	
PLRE-2-3/4	PCRE-2-3/4	PCFE-2-3/4	PLRE-2-3/4	PTRE-2.75
PLRE-3	PCRE-3	PCFE-3	PLRE-3	PTRE-3.00
PLRE-3-1/4	PCRE-3-1/4	PCFE-3-1/4	PLRE-3-1/4	PTRE-3.25
PLRE-3-1/2	PCRE-3-1/2	PCFE-3-1/2	PLRE-3-1/2	PTRE-3.50
PLRE-4	PCRE-4	PCFE-4	PLRE-4	PTRE-4.00
PLRE-5	PCRE-5		PLRE-5	PTRE-4.50
PLRE-6	PCRE-6		PLRE-6	PTRE-5.00

**Flanged Eccentric Track Roller**

POWERDRIVE	SMITH®	Mc Gill	OSBORN	PCI
FLRE-1			FLRE-1	FTRE-1.00
FLRE-1-1/8			FLRE-1-1/8	FTRE-1.125
FLRE-1-1/4			FLRE-1-1/4	FTRE-1.25
FLRE-1-3/8			FLRE-1-3/8	FTRE-1.375
FLRE-1-1/2	FCR-1-1/2	FCF-1-1/2	FLRE-1-1/2	FTRE-1.50
FLRE-1-3/4	FCR-1-3/4	FCF-1-3/4	FLRE-1-3/4	FTRE-1.75
FLRE-2	FCR-2	FCF-2	FLRE-2	FTRE-2
FLRE-2-1/4	FCR-2-1/4	FCF-2-1/4	FLRE-2-1/4	FTRE-2.25
FLRE-2-1/2	FCR-2-1/2	FCF-2-1/2	FLRE-2-1/2	FTRE-2.50
FLRE-2-1/2-1			FLRE-2-1/2-4	
FLRE-2-3/4	FCR-2-3/4	FCF-2-3/4	FLRE-2-3/4	FTRE-2.75
FLRE-3	FCR-3	FCF-3	FLRE-3	FTRE-3
FLRE-3-1/4	FCR-3-1/4	FCF-3-1/4	FLRE-3-1/4	FTRE-3.25
FLRE-3-1/2	FCR-3-1/2	FCF-3-1/2	FLRE-3-1/2	FTRE-3.50
FLRE-4	FCR-4	FCF-4	FLRE-4	FTRE-4
FLRE-4-1/2	FCR-4-1/2		FLRE-4-1/2	FTRE-4.50
FLRE-5	FCR-5		FLRE-5	FTRE-5.00
FLRE-6	FCR-6		FLRE-6	FTRE-6.00

**V-Grooved Eccentric Track Roller**

POWERDRIVE	SMITH®	Mc Gill	OSBORN	PCI
VLRE-1-1/2			VLRE-1-1/2	VTRE-1.50
VLRE-2			VLRE-2	VTRE-2
VLRE-2-1/2		VCFE-2-1/2	VLRE-2-1/2	VTRE-2.50
VLRE-3-1/2	VCRE-3-1/2	VCFE-3-1/2	VLRE-3-1/2	VTRE-3.50
VLRE-3-1/2-1			VLRE-3-1/2-4	VTRE-3.50E
VLRE-4-1/2	VCRE-4-1/2	VCFE-4-1/2	VLRE-4-1/2	VTRE-4.50
VLRE-5-1/2	VCRE-5-1/2		VLRE-5-1/2	VTRE-5.50
VLRE-6-1/2	VCRE-6-1/2		VLRE-6-1/2	VTRE-6.50
VLRE-7-1/2	VCRE-7-1/2		VLRE-7-1/2	VTRE-7.50