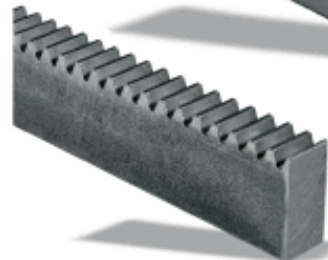
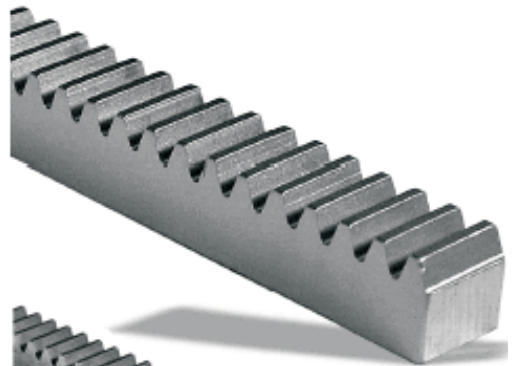




POWER DRIVE

www.powerdrive.com

GEAR RACK



GEAR RACK

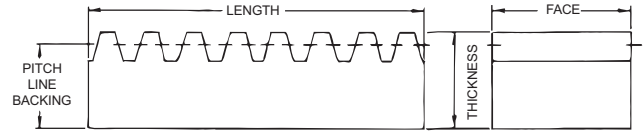
STANDARD FACE WIDTH
STEEL — 14 1/2° & 20° PRESSURE ANGLE

Catalog Number		Pitch	Face Width (inches)	Overall Thickness (Inches)	Pitch Line Backing	Stock Length feet	App. Weight Lbs./Pc
14 1/2° PA.	20° PA.						
R3x2	TR3x2	3	3	1 1/2	1.167	2	24.00
R3x4	TR3x4	3	3	1 1/2	1.167	4	48.00
R3x6	TR3x6	3	3	1 1/2	1.167	6	72.00
R4x2	TR4x2	4	2	1 1/2	1.250	2	17.40
R4x4	TR4x4	4	2	1 1/2	1.250	4	34.80
R4x6	TR4x6	4	2	1 1/2	1.250	6	52.20
RA4x2		4	2	2	1.750	2	23.60
RA4x4		4	2	2	1.750	4	47.20
RA4x6		4	2	2	1.750	6	70.80
R5x2	TR5x2	5	1 3/4	1 1/4	1.050	2	12.80
R5x4	TR5x4	5	1 3/4	1 1/4	1.050	4	25.60
R5x6	TR5x6	5	1 3/4	1 1/4	1.050	6	38.40
RA5x2		5	1 3/4	1 1/2	1.300	2	16.00
RA5x4		5	1 3/4	1 1/2	1.300	4	32.00
RA5x6		5	1 3/4	1 1/2	1.300	6	48.00
R6x2		6	1 1/2	1	0.833	2	8.60
R6x4		6	1 1/2	1	0.833	4	17.20
R6x6		6	1 1/2	1	0.833	6	25.80
RA6x2	TR6x2	6	1 1/2	1 1/2	1.333	2	13.80
RA6x4	TR6x4	6	1 1/2	1 1/2	1.333	4	27.60
RA6x6	TR6x6	6	1 1/2	1 1/2	1.333	6	41.40
R8x2		8	1 1/4	3/4	0.625	2	5.20
R8x4		8	1 1/4	3/4	0.625	4	10.40
R8x6		8	1 1/4	3/4	0.625	6	15.60
R8x12		8	1 1/4	3/4	0.625	12	33.00
RA8x2	TR8x2	8	1 1/4	1 1/4	1.125	2	9.80
RA8x4	TR8x4	8	1 1/4	1 1/4	1.125	4	19.60
RA8x6	TR8x6	8	1 1/4	1 1/4	1.125	6	29.40
RA8x12		8	1 1/4	1 1/4	1.125	12	60.00
R10x2		10	1	5/8	0.525	2	3.60
R10x4		10	1	5/8	0.525	4	7.20
R10x6		10	1	5/8	0.525	6	10.80
R10x12		10	1	5/8	0.525	12	22.00
RA10x2	TR10x2	10	1	1	0.900	2	6.00
RA10x4	TR10x4	10	1	1	0.900	4	12.00
RA10x6	TR10x6	10	1	1	0.900	6	18.00
RA10x12		10	1	1	0.900	12	40.00
R12x2		12	3/4	1/2	0.417	2	2.00
R12x4		12	3/4	1/2	0.417	4	4.00
R12x6		12	3/4	1/2	0.417	6	6.00
RA12x2	TR12x2	12	3/4	3/4	0.667	2	3.40
RA12x4	TR12x4	12	3/4	3/4	0.667	4	6.80
RA12x6	TR12x6	12	3/4	3/4	0.667	6	10.20
RA12x12		12	3/4	3/4	0.667	12	22.00
R16x2		16	5/16	5/16	0.250	2	0.50
R16x4		16	5/16	5/16	0.250	4	1.00
R16x6		16	5/16	5/16	0.250	6	1.50
RA16x2	TR16x2	16	1/2	1/2	0.438	2	1.52
RA16x4	TR16x4	16	1/2	1/2	0.438	4	3.04
RA16x6	TR16x6	16	1/2	1/2	0.438	6	4.56
RA16x12		16	1/2	1/2	0.438	12	10.00
R20x2	TR20x2	20	3/8	3/8	0.325	2	0.84
R20x4	TR20x4	20	3/8	3/8	0.325	4	1.68
R20x6	TR20x6	20	3/8	3/8	0.325	6	2.52
R24x2		24	1/4	1/4	0.208	2	0.38
R24x4		24	1/4	1/4	0.208	4	0.76
R24x6		24	1/4	1/4	0.208	6	1.14
R32x4		32	3/16	3/16	0.156	4	0.50
R32x6		32	3/16	3/16	0.156	6	1.20



Power Drive Rack is made from low carbon cold drawn steel. It is available in 14 1/2° and 20° pressure angle in various foot length. Allowance is made for cutting and machining. Special rack can be supplied in other materials, sizes, and pitches.

GEAR RACK



**WIDE FACE WIDTH
STEEL — 20° PRESSURE ANGLE**

Catalog Number	Pitch	Face Width (inches)	Overall Thickness (Inches)	Pitch Line Backing	Stock	App. Weight Lbs./Pc
R204x2	4	3 1/2	2	1.750	2	41.0
R204x4	4	3 1/2	2	1.750	4	82.0
R204x6	4	3 1/2	2	1.750	6	123.0
R205x2	5	2 1/2	1 1/2	1.300	2	22.4
R205x4	5	2 1/2	1 1/2	1.300	4	44.8
R205x6	5	2 1/2	1 1/2	1.300	6	67.2
R206x2	6	2	1 1/2	1.333	2	17.0
R206x4	6	2	1 1/2	1.333	4	34.0
R206x6	6	2	1 1/2	1.333	6	51.0
R208x2	8	1 1/2	1 1/2	1.375	2	13.8
R208x4	8	1 1/2	1 1/2	1.375	4	27.6
R208x6	8	1 1/2	1 1/2	1.375	6	41.3
R2010x2	10	1 1/4	1 1/4	1.150	2	9.0
R2010x4	10	1 1/4	1 1/4	1.150	4	18.0
R2010x6	10	1 1/4	1 1/4	1.150	6	27.0
R2012x2	12	1	1	.917	2	6.4
R2012x4	12	1	1	.917	4	12.8
R2012x6	12	1	1	.917	6	19.2
R2016x2	16	3/4	3/4	.688	2	3.4
R2016x4	16	3/4	3/4	.688	4	6.8
R2016x6	16	3/4	3/4	.688	6	10.2
R2020x2	20	1/2	1/2	.450	2	0.8
R2020x4	20	1/2	1/2	.450	4	1.6
R2020x6	20	1/2	1/2	.450	6	2.5