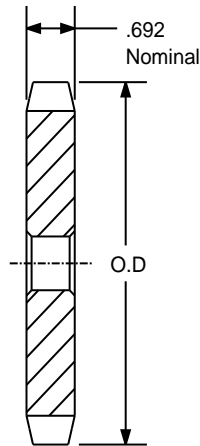


SPROCKETS FOR No.100 PITCH (1 1/4" ANSI) CHAIN

STEEL

1 1/4" PITCH



TYPE - A

SPROCKETS FOR No.100 PITCH (1 1/4" ANSI) CHAIN

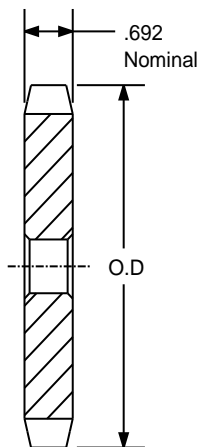
PART NUMBER	NO. OF TEETH	TYPE	DIAMETERS		STOCK BORE	WEIGHT
			O.D.	P.D.		
100A7	7	A	3.350	2.881	1	1.2
100A8	8	A	3.770	3.266	1	1.4
100A9	9	A	4.180	3.655	1	1.6
100A10	10	A	4.600	4.045	1	2.0
100A11	11	A	5.010	4.437	1	2.5
100A12	12	A	5.420	4.830	1	3.0
100A13	13	A	5.820	5.223	1	3.5
100A14	14	A	6.230	5.617	1 1/4	4.1
100A15	15	A	6.630	6.012	1 1/4	4.7
100A16	16	A	7.030	6.407	1 1/4	5.4
100A17	17	A	7.440	6.803	1 1/4	6.1
100A18	18	A	7.840	7.198	1 1/4	7.0
100A19	19	A	8.240	7.595	1 1/4	7.8
100A20	20	A	8.640	7.991	1 1/4	8.8
100A21	21	A	9.040	8.387	1 1/4	9.8
100A22	22	A	9.440	8.783	1 1/4	10.5
100A23	23	A	9.840	9.180	1 1/4	11.8
100A24	24	A	10.250	9.577	1 1/4	12.8
100A25	25	A	10.650	9.973	1 1/4	13.9
100A26	26	A	11.050	10.370	1 1/4	15.0
100A27	27	A	11.440	10.767	1 1/4	16.0
100A28	28	A	11.840	11.164	1 1/4	17.4
100A29	29	A	12.240	11.561	1 1/4	19.6
100A30	30	A	12.640	11.958	1 1/4	20.1
100A31	31	A	13.040	12.356	1 1/4	21.5
100A32	32	A	13.440	12.753	1 1/4	22.6
100A33	33	A	13.840	13.150	1 1/4	24.1
100A34	34	A	14.240	13.547	1 1/4	26.0
100A35	35	A	14.640	13.958	1 1/4	27.2
100A36	36	A	15.040	14.342	1 1/4	30.0
100A37	37	A	15.440	14.740	1 1/4	31.0
100A38	38	A	15.840	15.137	1 1/4	33.0
100A39	39	A	16.230	15.534	1 1/4	35.0
100A40	40	A	16.630	15.932	1 1/4	36.0

*Has recessed groove in hub for chain clearance.
Maximum bores shown will accommodate standard keyseat and setscrew over keyseat. Slightly larger bores possible with no keyseat shallow keyseat, or setscrew at angle to keyseat.

SPROCKETS FOR No.100 PITCH (1 1/4" ANSI) CHAIN

STEEL

1 1/4" PITCH



TYPE - A

SPROCKETS FOR No.100 PITCH (1 1/4" ANSI) CHAIN

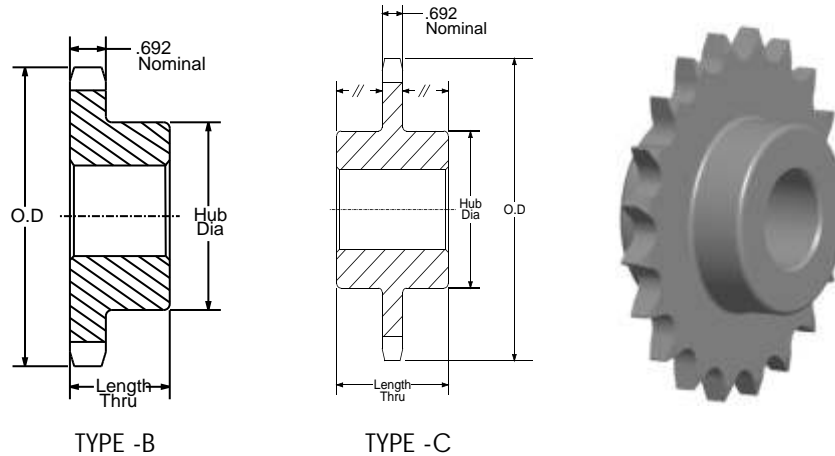
PART NUMBER	NO. OF TEETH	TYPE	DIAMETERS		STOCK BORE	WEIGHT
			O.D.	P.D.		
100A41	41	A	17.030	16.329	1 1/4	39.0
100A42	42	A	17.430	16.727	1 1/4	40.0
100A43	43	A	17.830	17.124	1 1/4	43.0
100A44	44	A	18.230	17.522	1 1/2	45.0
100A45	45	A	18.630	17.920	1 1/2	47.0
100A46	46	A	19.020	18.317	1 1/2	48.0
100A47	47	A	19.420	18.715	1 1/2	52.0
100A48	48	A	19.820	19.112	1 1/2	54.0
100A49	49	A	20.220	19.510	1 1/2	56.0
100A50	50	A	20.620	19.908	1 1/2	57.0
100A51	51	A	21.020	20.305	1 1/2	63.0
100A52	52	A	21.420	20.703	1 1/2	64.0
100A53	53	A	21.810	21.100	1 1/2	64.2
100A54	54	A	22.210	21.498	1 1/2	68.0
100A55	55	A	22.610	21.896	1 1/2	70.0
100A56	56	A	23.010	22.296	1 1/2	72.0
100A57	57	A	23.410	22.691	1 1/2	75.8
100A58	58	A	23.810	23.089	1 1/2	76.0
100A59	59	A	24.200	23.486	1 1/2	77.0
100A60	60	A	24.600	23.884	1 1/2	80.0
100A70	70	A	28.580	27.862	1 1/2	113.0
100A72	72	A	29.380	28.657	1 1/2	119.0
100A76	76	A	30.973	30.248	1 1/2	133.0
100A80	80	A	32.570	32.237	1 1/2	146.0
100A84	84	A	34.160	33.430	1 1/2	162.0
100A90	90	A	36.550	35.817	1 1/2	193.0
100A96	96	A	38.930	38.203	1 1/2	215.0

*Has recessed groove in hub for chain clearance.
Maximum bores shown will accommodate standard keyseat and setscrew over keyseat. Slightly larger bores possible with no keyseat shallow keyseat, or setscrew at angle to keyseat.

SPROCKETS FOR No.100 PITCH (1 1/4" ANSI) CHAIN

STEEL

1 1/4" PITCH



TYPE -B

TYPE -C

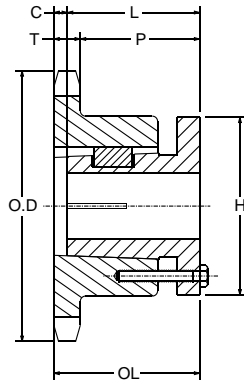
SPROCKETS FOR No.100 PITCH (1 1/4" ANSI) CHAIN									
PART NUMBER	NO. OF TEETH	TYPE	DIAMETERS		BORE RANGE		DIMENSIONS		WEIGHT LBS.
			O.D.	P.D.	MIN	MAX	HUB DIAMETER	LENGTH THRU	
100B8	8	B	3.770	3.266	1	1 5/8	2 13/16*	1 7/8	2.3
100B9	9	B	4.180	3.655	1	1 7/8	3 1/4*	1 7/8	3.2
100B10	10	B	4.600	4.045	1	2 1/4	3 9/16*	1 7/8	4.1
100B11	11	B	5.010	4.437	1	2 1/4	4*	1 7/8	5.3
100B12	12	B	5.420	4.830	1	2 3/8	3 7/8	1 7/8	6.4
100B13	13	B	5.820	5.223	1	2 3/4	4 3/16	1 5/8	6.6
100B14	14	B	6.230	5.617	1 1/4	3	4 1/2	1 5/8	7.4
100B15	15	B	6.630	6.012	1 1/4	3	4 1/2	1 3/4	9.2
100B16	16	B	7.030	6.407	1 5/16	3	4 1/2	1 3/4	9.9
100B17	17	B	7.440	6.803	1 5/16	3	4 1/2	1 3/4	10.8
100B18	18	B	7.840	7.198	1 5/16	3	4 1/2	1 3/4	11.5
100B19	19	B	8.240	7.595	1 5/16	3	4 1/2	2	13.1
100B20	20	B	8.640	7.991	1 5/16	3	4 1/2	2	14.2
100B21	21	B	9.040	8.387	1 5/16	3	4 1/2	2	15.3
100B22	22	B	9.440	8.783	1 5/16	3	4 1/2	2	16.1
100B23	23	B	9.840	9.180	1 1/4	3	4 1/2	2	17.2
100B24	24	B	10.250	9.577	1 1/4	3	4 1/2	2	19.2
100B25	25	B	10.650	9.973	1 1/4	3	4 1/2	2	19.5
100B26	26	B	11.050	10.370	1 1/4	3 5/16	5	2	21.7
100B27	27	B	11.440	10.767	1 1/4	3 5/16	5	2	23.0
100B28	28	B	11.840	11.164	1 1/4	3 5/16	5	2	24.4
100B29	29	B	12.240	11.561	1 1/4	3 5/16	5	2	25.0
100B30	30	B	12.640	11.958	1 1/4	3 5/16	5	2	29.9
100B32	32	B	13.440	12.356	1 1/4	3 5/16	5	2	29.8
100B35	35	B	14.640	13.968	1 1/4	3 5/16	5	2 1/2	36.9
100B36	36	B	15.040	14.342	1 1/4	3 5/16	5	2 1/2	38.6
100B38	38	B	15.840	15.137	1 1/4	3 5/16	5	2 1/2	41.5
100B39	39	B	16.230	15.534	1 1/4	3 5/16	5	2 1/2	43.6
100B40	40	B	16.630	15.932	1 1/4	3 5/16	5	2 1/2	46.9
100B42	42	B	17.430	16.727	1 1/4	3 5/16	5	2 1/2	50.4
100B45	45	B	18.630	17.920	1 1/2	3 5/16	5	2 1/2	54.0
100B48	48	B	19.820	19.112	1 1/2	4	6	2 1/2	66.0
100C54	54	C	22.210	21.498	1 1/2	4	6	3 1/4	78.0
100C60	60	C	24.600	23.884	1 1/2	4	6	3 1/4	89.0
100C70	70	C	28.580	27.862	1 1/2	5 1/4	7	3 3/4	125.0
100C72	72	C	29.380	28.657	1 1/2	5 1/4	7	3 3/4	134.0
100C76	76	C	30.973	30.248	1 1/2	5 1/4	7	3 3/4	143.0
100C80	80	C	32.570	32.237	1 1/2	5 1/4	7	3 3/4	151.0
100C84	84	C	34.160	33.430	1 1/2	5 1/4	7	3 3/4	170.0
100C90	90	C	36.550	35.817	1 1/2	5 1/4	7	3 3/4	184.0
100C96	96	C	38.930	38.203	1 1/2	5 1/4	7	4 1/2	203.0

*Has recessed groove in hub for chain clearance.
Maximum bores shown will accommodate standard keyseat and setscrew over keyseat. Slightly larger bores possible with no keyseat shallow keyseat, or setscrew at angle to keyseat.

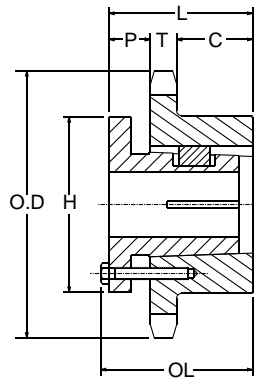
SPROCKETS FOR No.100 PITCH (1 1/4" ANSI) CHAIN

STEEL

1 1/4" PITCH



TYPE 4



TYPE 5



[SINGLE SPLIT BUSH]

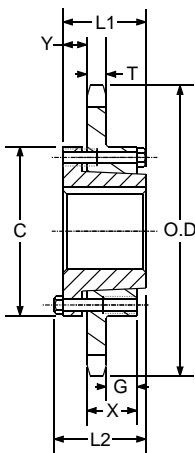
SPROCKETS FOR No.80 PITCH (1" ANSI) CHAIN

OLD PART NUMBER	NEW PART NUMBER	NO. OF TEETH	BUSHING	TYPE	DIAMETERS		BORE RANGE		DIMENSIONS						WEIGHT LBS.
					O.D.	P.D.	MIN	MAX	T(NOM.)	O.L.	L	P	C	H	
100P11	100ST11-P1	11	P1	4	5.01	4.437	1/2	1 3/4	0.692	2 3/16	1 15/16	1 1/4	0	3	3.0
100Q12	100ST12-Q1	12	Q1	4	5.42	4.830	3/4	2 11/16	0.692	2 27/32	2 1/2	1 7/8	1/16	4 1/8	3.5
100Q13	100ST13-Q1	13	Q1	4	5.82	5.223	3/4	2 11/16	0.692	2 27/32	2 1/2	1 7/8	1/16	4 1/8	4.3
100Q14	100ST14-Q1	14	Q1	4	6.23	5.617	3/4	2 11/16	0.692	2 25/32	2 1/2	1 13/16	0	4 1/8	5.6
100Q15	100ST15-Q1	15	Q1	4	6.63	6.012	3/4	2 11/16	0.692	2 25/32	2 1/2	1 13/16	0	4 1/8	6.5
100Q16	100ST16-Q1	16	Q1	4	7.03	6.407	3/4	2 11/16	0.692	2 25/32	2 1/2	1 13/16	0	4 1/8	7.4
100Q17	100ST17-Q1	17	Q1	4	7.44	6.803	3/4	2 11/16	0.692	2 25/32	2 1/2	1 13/16	0	4 1/8	8.2
100Q18	100ST18-Q1	18	Q1	4	7.84	7.198	3/4	2 11/16	0.692	2 25/32	2 1/2	1 13/16	0	4 1/8	9.0
100Q19	100ST19-Q1	19	Q1	4	8.24	7.595	3/4	2 11/16	0.692	2 25/32	2 1/2	1 13/16	0	4 1/8	9.9
100Q20	100ST20-Q1	20	Q1	4	8.64	7.991	3/4	2 11/16	0.692	2 25/32	2 1/2	1 13/16	0	4 1/8	10.8
100Q21	100ST21-Q1	21	Q1	4	9.04	8.387	3/4	2 11/16	0.692	2 25/32	2 1/2	1 13/16	0	4 1/8	11.7
100R21	100ST21-R1	21	R1	4	9.04	8.387	1 1/8	3 3/4	0.692	2 25/32	2 7/8	2 3/16	0	5 3/8	13.3
100Q22	100ST22-Q1	22	Q1	4	9.44	8.783	3/4	2 11/16	0.692	2 25/32	2 1/2	1 13/16	0	4 1/8	12.5
100Q23	100ST23-Q1	23	Q1	4	9.84	9.180	3/4	2 11/16	0.692	2 25/32	2 1/2	1 13/16	0	4 1/8	13.9
100Q24	100ST24-Q1	24	Q1	4	10.25	9.577	3/4	2 11/16	0.692	2 25/32	2 1/2	1 13/16	0	4 1/8	15.5
100R24	100ST24-R1	24	R1	4	10.25	9.577	1 1/8	2 11/16	0.692	3 5/32	2 7/8	2 3/16	0	5 3/8	16.1
100Q25	100ST25-Q1	25	Q1	4	10.65	9.973	3/4	2 11/16	0.692	2 25/32	2 1/2	1 13/16	0	4 1/8	16.2
100R25	100ST25-R1	25	R1	4	10.65	9.973	1 1/8	3 3/4	0.692	2 25/32	2 7/8	2 3/16	0	5 3/8	17.0
100Q26	100ST26-Q1	26	Q1	4	11.05	10.370	3/4	2 11/16	0.692	2 25/32	2 1/2	1 13/16	0	4 1/8	17.9
100R26	100ST26-R1	26	R1	4	11.05	10.370	1 1/8	3 3/4	0.692	2 25/32	2 1/2	2 3/16	0	5 3/8	18.5
100Q27	100ST27-Q1	27	Q1	4	11.45	10.767	3/4	2 11/16	0.692	2 25/32	2 1/2	1 13/16	0	4 1/8	18.2
100R27	100ST27-R1	27	R1	4	11.45	10.767	1 1/8	3 3/4	0.692	3 5/32	2 7/8	2 3/16	0	5 3/8	19.6
100Q28	100ST28-Q1	28	Q1	4	11.84	11.164	3/4	2 11/16	0.692	2 25/32	2 1/2	1 13/16	0	4 1/8	19.9
100R28	100ST28-R1	28	R1	4	11.84	11.164	1 1/8	3 3/4	0.692	3 5/32	2 7/8	2 3/16	0	5 3/8	21.0
100Q30	100ST30-Q1	30	Q1	4	12.64	11.958	3/4	2 11/16	0.692	2 25/32	2 1/2	1 13/16	0	4 1/8	22.6
100R30	100ST30-R1	30	R1	4	12.64	11.958	1 1/8	3 3/4	0.692	3 5/32	2 7/8	2 3/16	0	5 3/8	24.5
100R31	100ST31-R1	31	R1	4	13.04	12.356	1 1/8	3 3/4	0.692	3 5/32	2 7/8	2 3/16	0	5 3/8	25.8
100Q32	100ST32-Q1	32	Q1	4	13.44	12.753	3/4	2 11/16	0.692	2 25/32	2 1/2	1 13/16	0	4 1/8	25.3
100R32	100ST32-R1	32	R1	4	13.44	12.753	1 1/8	3 3/4	0.692	3 5/32	2 7/8	2 3/16	0	5 3/8	26.5
100Q35	100ST35-Q1	35	Q1	4	14.64	13.945	3/8	2 11/16	0.692	2 25/32	2 1/2	1 13/16	0	4 1/8	30.2
100R35	100ST35-R1	35	R1	4	14.64	13.945	1 1/8	3 3/4	0.692	3 5/32	2 7/8	2 3/16	0	5 3/8	29.8
100R36	100ST36-R1	36	R1	4	15.04	14.342	1 1/8	3 3/4	0.692	3 5/32	2 7/8	2 3/16	0	5 3/8	33.0
100R40	100ST40-R1	40	R1	4	16.63	15.932	1 1/8	3 3/4	0.692	3 5/32	2 7/8	2 3/16	0	5 3/8	40.9
100R42	100ST42-R1	42	R1	4	17.43	16.727	1 1/8	3 3/4	0.692	3 5/32	2 7/8	2 3/16	0	5 3/8	44.3
100R45	100ST45-R1	45	R1	4	18.63	17.920	1 1/8	3 3/4	0.692	3 5/32	2 7/8	2 3/16	0	5 3/8	50.5
100R48	100ST48-R1	48	R1	4	19.82	19.112	1 1/8	3 3/4	0.692	3 5/32	2 7/8	2 3/16	0	5 3/8	57.5
100R54	100ST54-R1	54	R1	5	22.21	21.198	1 1/8	3 3/4	0.692	3 5/32	2 7/8	7/8	0	5 3/8	69.0
100R60	100ST60-R1	60	R1	5	24.55	23.884	1 1/8	3 3/4	0.692	3 5/32	2 7/8	7/8	0	5 3/8	84.0
100R70	100ST70-R1	70	R1	5	28.53	27.862	1 1/8	3 3/4	0.692	3 5/32	2 7/8	7/8	0	5 3/8	104.0
100R72	100ST72-R1	72	R1	5	29.33	28.657	1 1/8	3 3/4	0.692	3 5/32	2 7/8	7/8	0	5 3/8	106.0
100R80	100ST80-R1	80	R1	5	32.52	31.839	1 1/8	3 3/4	0.692	3 5/32	2 7/8	7/8	0	5 3/8	135.0
100R84	100ST84-R1	84	R1	5	34.11	33.430	1 1/8	3 3/4	0.692	3 5/32	2 7/8	7/8	0	5 3/8	138.0

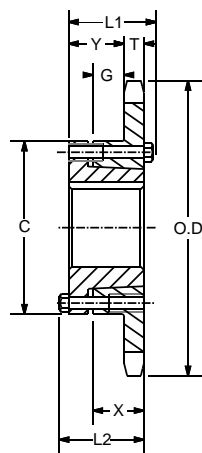
SPROCKETS FOR No.100 PITCH (1 1/4" ANSI) CHAIN

STEEL

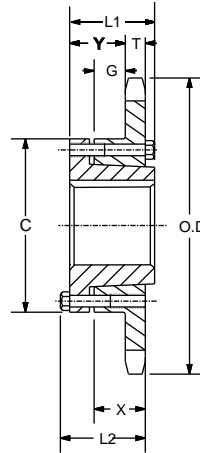
1 1/4" PITCH



TYPE -C



TYPE -B



TYPE -B1



[SINGLE OD BUSH]

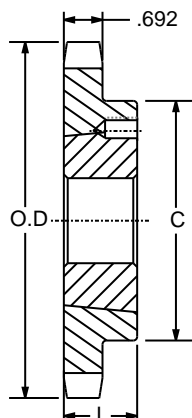
SPROCKETS FOR No.100 PITCH (1 1/4" ANSI) CHAIN

OLD PART NUMBER	NEW PART NUMBER	NO. OF TEETH	BUSHING	TYPE	DIAMETERS		BORE RANGE		DIMENSIONS							WEIGHT	
					O.D.	P.D.	MIN	MAX	L1	L2	C	Y	G	X	T (NOM.)	WITH HUB	RIM ONLY
100SDS11	100QD11-SDS	11	SDS	B	5.010	4.437	1/2	2	1 1/2	1 1/2	3 3/16	5/8	1/16	3/4	0.692	3.0	2.0
100SDS12	100QD12-SDS	12	SDS	B	5.420	4.830	1/2	2	1 1/2	1 1/2	3 3/16	5/8	1/16	3/4	0.692	3.6	2.6
100SK13	100QD13-SK	13	SK	B	5.820	5.223	1/2	2 5/8	2 1/8	2 1/8	3 7/8	1 13/64	9/16	1 1/4	0.692	5.3	3.3
100SK14	100QD14-SK	14	SK	B	6.230	5.617	1/2	2 5/8	2 1/8	2 1/8	3 7/8	1 13/64	9/16	1 1/4	0.692	6.1	4.1
100SF15	100QD15-SF	15	SF	B	6.630	6.012	1/2	2 15/16	2 1/4	2 1/4	4 5/8	1 19/64	9/16	1 1/4	0.692	7.8	4.8
100SF16	100QD16-SF	16	SF	B	7.030	6.407	1/2	2 15/16	2 1/4	2 1/4	4 5/8	1 19/64	9/16	1 1/4	0.692	8.6	5.6
100SF17	100QD17-SF	17	SF	B	7.440	6.803	1/2	2 15/16	2 1/4	2 1/4	4 5/8	1 19/64	9/16	1 1/4	0.692	9.5	6.5
100E18	100QD18-E	18	E	B1	7.840	7.198	7/8	3 1/2	2 5/8	2 15/16	6	1 13/16	15/16	1 5/8	0.692	19.0	9.0
100E19	100QD19-E	19	E	B1	8.240	7.595	7/8	3 1/2	2 5/8	2 15/16	6	1 13/16	15/16	1 5/8	0.692	20.2	10.2
100E20	100QD20-E	20	E	B1	8.640	7.991	7/8	3 1/2	2 5/8	2 15/16	6	1 13/16	15/16	1 5/8	0.692	21.6	11.6
100E21	100QD21-E	21	E	B1	9.040	8.387	7/8	3 1/2	2 5/8	2 15/16	6	1 13/16	15/16	1 5/8	0.692	22.5	12.5
100E22	100QD22-E	22	E	B1	9.440	8.783	7/8	3 1/2	2 5/8	2 15/16	6	1 13/16	15/16	1 5/8	0.692	23.5	13.5
100E23	100QD23-E	23	E	B1	9.840	9.180	7/8	3 1/2	2 5/8	2 15/16	6	1 13/16	15/16	1 5/8	0.692	24.6	14.6
100E24	100QD24-E	24	E	B1	10.250	9.577	7/8	3 1/2	2 5/8	2 15/16	6	1 13/16	15/16	1 5/8	0.692	25.7	15.7
100E25	100QD25-E	25	E	B1	10.650	9.973	7/8	3 1/2	2 5/8	2 15/16	6	1 13/16	15/16	1 5/8	0.692	26.8	16.8
100E26	100QD26-E	26	E	B1	11.050	10.370	7/8	3 1/2	2 5/8	2 15/16	6	1 13/16	15/16	1 5/8	0.692	28.1	18.1
100E27	100QD27-E	27	E	B1	11.440	10.767	7/8	3 1/2	2 5/8	2 15/16	6	1 13/16	15/16	1 5/8	0.692	29.2	19.2
100E28	100QD28-E	28	E	B1	11.840	11.164	7/8	3 1/2	2 5/8	2 15/16	6	1 13/16	15/16	1 5/8	0.692	30.7	20.7
100E30	100QD30-E	30	E	B1	12.640	11.958	7/8	3 1/2	2 5/8	2 15/16	6	1 13/16	15/16	1 5/8	0.692	33.2	23.2
100E32	100QD32-E	32	E	B1	13.440	12.753	7/8	3 1/2	2 5/8	2 15/16	6	1 13/16	15/16	1 5/8	0.692	35.4	25.4
100E35	100QD35-E	35	E	B1	14.640	13.945	7/8	3 1/2	2 5/8	2 15/16	6	1 13/16	15/16	1 5/8	0.692	40.5	30.5
100E36	100QD36-E	36	E	B1	15.040	14.342	7/8	3 1/2	2 5/8	2 15/16	6	1 13/16	15/16	1 5/8	0.692	42.5	32.3
100E40	100QD40-E	40	E	B1	16.630	15.932	7/8	3 1/2	2 5/8	2 15/16	6	1 13/16	15/16	1 5/8	0.692	49.1	39.1
100E42	100QD42-E	42	E	B1	17.430	16.727	7/8	3 1/2	2 5/8	2 15/16	6	1 13/16	15/16	1 5/8	0.692	53.4	43.4
100E45	100QD45-E	45	E	B1	18.630	17.920	7/8	3 1/2	2 5/8	2 15/16	6	1 13/16	15/16	1 5/8	0.692	58.9	48.9
100E48	100QD48-E	48	E	B1	19.820	19.112	7/8	3 1/2	2 5/8	2 15/16	6	1 13/16	15/16	1 5/8	0.692	64.0	54.0
100E54	100QD54-E	54	E	C	22.210	21.498	7/8	3 1/2	2 5/8	2 15/16	6	7/8	15/16	1 5/8	0.692	72.0	62.0
100E60	100QD60-E	60	E	C	24.600	23.884	7/8	3 1/2	2 5/8	2 15/16	6	7/8	15/16	1 5/8	0.692	84.0	74.0
100F70	100QD70-F	70	F	C	28.580	27.862	1	3 15/16	3 5/8	4	6 5/8	1	1 13/16	2 1/2	0.692	110.5	99.0
100F72	100QD72-F	72	F	C	29.380	28.657	1	3 15/16	3 5/8	4	6 5/8	1	1 13/16	2 1/2	0.692	117.5	106.0
100F80	100QD80-F	80	F	C	32.570	31.839	1	3 15/16	3 5/8	4	6 5/8	1	1 13/16	2 1/2	0.692	134.5	123.0
100F84	100QD84-F	84	F	C	34.160	33.430	1	3 15/16	3 5/8	4	6 5/8	1	1 13/16	2 1/2	0.692	151.5	140.0

SPROCKETS FOR No.100 PITCH (1 1/4" ANSI) CHAIN

STEEL

1 1/4" PITCH



TYPE - B

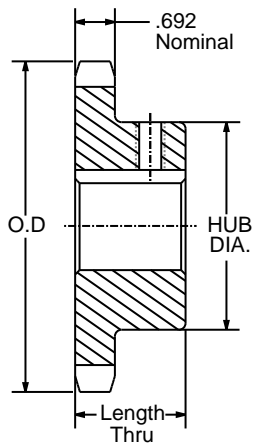
[SINGLE TAPER BUSH]

SPROCKETS FOR No.100 PITCH (1 1/4" ANSI) CHAIN												
OLD PART NUMBER	NEW PART NUMBER	NO. OF TEETH	BUSHING	TYPE	DIAMETERS		BORE RANGE		DIMENSIONS		WEIGHT	
					O.D.	P.D.	MIN	MAX	L	C	RIM ONLY	BUSH ONLY
100BTB11	100TL11-1615	11	1615	B	5.007	4.437	1/2	1 5/8	1 1/2	3	2.7	1.2
100BTB12	100TL12-1615	12	1615	B	5.415	4.830	1/2	1 5/8	1 1/2	3 1/4	3.5	1.2
100BTB13	100TL13-2012	13	2012	B	5.821	5.223	1/2	2	1 1/4	3 9/16	3.6	1.7
100BTB14	100TL14-2012	14	2012	B	6.227	5.617	1/2	2	1 1/4	3 9/16	3.9	1.7
100BTB15	100TL15-2517	15	2517	B	6.631	6.012	1/2	2 1/2	1 3/4	4 1/4	5.0	3.5
100BTB16	100TL16-2517	16	2517	B	7.034	6.407	1/2	2 1/2	1 3/4	4 1/2	6.4	3.5
100BTB17	100TL17-2517	17	2517	B	7.437	6.803	1/2	2 1/2	1 3/4	4 1/2	7.1	3.5
100BTB18	100TL18-2517	18	2517	B	7.839	7.198	1/2	2 1/2	1 3/4	4 1/2	7.8	3.5
100BTB19	100TL19-2517	19	2517	B	8.241	7.594	1/2	2 1/2	1 3/4	4 1/2	8.7	3.5
100BTB20	100TL20-2517	20	2517	B	8.642	7.991	1/2	2 1/2	1 3/4	4 1/2	9.6	3.5
100BTB21	100TL21-2517	21	2517	B	9.043	8.387	1/2	2 1/2	1 3/4	4 1/2	10.6	3.5
100BTB22	100TL22-2517	22	2517	B	9.444	8.783	1/2	2 1/2	1 3/4	4 1/2	11.0	3.5
100BTB24	100TL24-2517	24	2517	B	10.245	9.577	1/2	2 1/2	1 3/4	4 1/2	13.0	3.5
100BTB26	100TL26-2517	26	2517	B	11.045	10.370	1/2	2 1/2	1 3/4	4 1/2	15.0	3.5
100BTB28	100TL28-3020	28	3020	B	11.844	11.164	15/16	3	2	5 1/4	16.5	6.5
100BTB30	100TL30-3020	30	3020	B	12.643	11.958	15/16	3	2	5 1/4	22.0	6.5
100BTB32	100TL32-3020	32	3020	B	13.442	12.753	15/16	3	2	5 1/4	23.0	6.5
100BTB35	100TL35-3020	35	3020	B	14.639	13.945	15/16	3	2	5 1/4	28.0	6.5
100BTB36	100TL36-3020	36	3020	B	15.038	14.342	15/16	3	2	5 1/4	31.0	6.5
100BTB40	100TL40-3020	40	3020	B	16.633	15.932	15/16	3	2	5 1/4	37.0	6.5
100BTB45	100TL45-3020	45	3020	B	18.626	17.919	15/16	3	2	5 1/4	46.0	6.5
100BTB48	100TL48-3020	48	3020	B	19.821	19.112	15/16	3	2	5 1/4	53.0	6.5
100BTB54	100TL54-3020	54	3020	B	22.212	21.498	15/16	3	2	5 1/4	62.0	6.5
100BTB60	100TL60-3020	60	3020	B	24.601	23.884	15/16	3	2	5 1/4	72.0	6.5

SPROCKETS FOR No.100 PITCH (1 1/4" ANSI) CHAIN

STEEL

1 1/4" PITCH



[SINGLE TYPE BS]

TYPE - BS

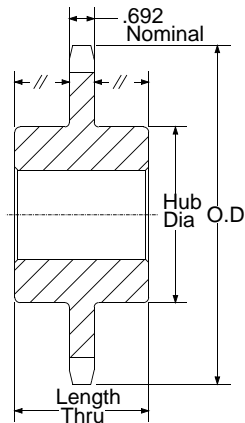
SPROCKETS FOR No.80 PITCH (1" ANSI) CHAIN

PART NUMBER	NO. OF TEETH	TYPE	DIAMETERS		LENGTH THRU	HUB DIA.	STOCK FINISHED BORES INCLUDES KEYWAY AND SETSCREW								WEIGHT LBS.	
			O.D.	P.D.												
100BS8	8	BS	3.770	3.266	1 7/8	2 7/16	1	1 3/16	1 1/4							2.8
100BS9	9	BS	4.180	3.655	1 7/8	2 13/16	1	1 3/16	1 1/4	1 7/16						3.0
100BS10	10	BS	4.600	4.045	1 7/8	3 1/4	1	1 3/16	1 1/4	1 7/16						3.9
100BS11	11	BS	5.010	4.437	1 7/8	3 9/16	1	1 3/16	1 1/4	1 7/16	1 15/16	2	2 3/16			4.9
100BS12	12	BS	5.420	4.830	1 7/8	4	1	1 3/16	1 1/4	1 7/16	1 15/16	2	2 3/16			6.0
100BS13	13	BS	5.820	5.223	1 5/8	3 7/8	1	1 3/16	1 1/4	1 7/16	1 15/16	2	2 3/16			6.2
100BS14	14	BS	6.230	5.617	1 5/8	4 3/16			1 1/4	1 7/16	1 15/16	2	2 3/16			6.6
100BS15	15	BS	6.630	6.012	1 3/4	4 1/2			1 1/4	1 7/16	1 15/16	2	2 3/16			8.4
100BS16	16	BS	7.030	6.407	1 3/4	4 1/2				1 7/16	1 15/16	2	2 3/16	2 7/16	2 15/16	9.0
100BS17	17	BS	7.440	6.803	1 3/4	4 1/2				1 7/16	1 15/16	2	2 3/16	2 7/16	2 15/16	9.9
100BS18	18	BS	7.840	7.198	1 3/4	4 1/2				1 7/16	1 15/16	2	2 3/16	2 7/16	2 15/16	10.6
100BS19	19	BS	8.240	7.595	2	4 1/2				1 7/16	1 15/16	2	2 3/16	2 7/16	2 15/16	12.1
100BS20	20	BS	8.640	7.991	2	4 1/2				1 7/16	1 15/16	2	2 3/16	2 7/16	2 15/16	13.2
100BS21	21	BS	9.040	8.387	2	4 1/2				1 7/16	1 15/16	2	2 3/16	2 7/16	2 15/16	14.3
100BS22	22	BS	9.440	8.783	2	4 1/2				1 7/16	1 15/16	2	2 3/16	2 7/16	2 15/16	15.1
100BS23	23	BS	9.840	9.180	2	4 1/2				1 7/16	1 15/16	2	2 3/16	2 7/16	2 15/16	16.1
100BS24	24	BS	10.250	9.577	2	4 1/2				1 7/16	1 15/16	2	2 3/16	2 7/16	2 15/16	18.1
100BS25	25	BS	10.650	9.973	2	4 1/2				1 7/16	1 15/16	2	2 3/16	2 7/16	2 15/16	18.4

SPROCKETS FOR No.100 PITCH (1 1/4" ANSI) CHAIN

STEEL

1 1/4" PITCH



TYPE - C

[SINGLE TYPE C]

SPROCKETS FOR No.100 PITCH (1 1/4" ANSI) CHAIN									
PART NUMBER	NO. OF TEETH	DIAMETERS		BORE RANGE			DIMENSIONS		WEIGHT LBS.
		O.D.	P.D.	MIN	MAX	STOCK BORE	HUB DIA	LENGTH THRU	
100C10	10	4.600	4.045	1	1 7/8	1	3 9/32	2 7/8	6.13
100C11	11	5.010	4.437	1	2 1/4	1	3 9/16	2 7/8	7.12
100C12	12	5.420	4.830	1	2 1/46	1	4	2 7/8	8.37
100C13	13	5.820	5.223	1	2 3/8	1	3 57/64	2 7/8	10.00
100C14	14	6.230	5.617	1 1/4	2 3/4	1 1/4	4 3/16	2 7/8	12.19

*Has recessed groove in hub for chain clearance.maximum bores shown will accommodate standard keyseat