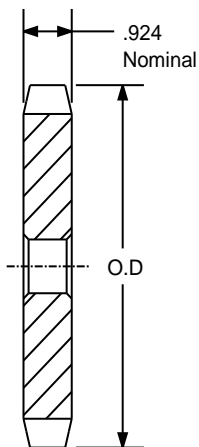


SPROCKETS FOR No.120 PITCH (1 1/2" ANSI) CHAIN

STEEL

1 1/2" PITCH



TYPE - A

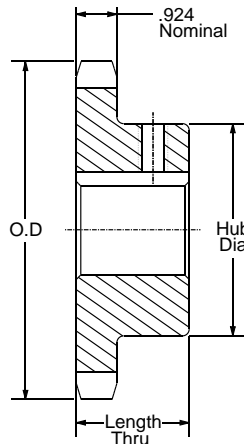
SPROCKETS FOR No.120 PITCH (1 1/2" ANSI) CHAIN

PART NUMBER	NO. OF TEETH	TYPE	DIAMETERS		STOCK BORE	WEIGHT
			O.D.	P.D.		
120A8	8	A	4.520	3.920	1 1/4	2.40
120A9	9	A	5.020	4.386	1 1/4	3.00
120A10	10	A	5.520	4.854	1 1/4	3.80
120A11	11	A	6.010	5.324	1 1/4	4.80
120A12	12	A	6.500	5.796	1 1/4	5.80
120A13	13	A	6.990	6.268	1 1/4	6.70
120A14	14	A	7.470	6.741	1 1/4	8.00
120A15	15	A	7.960	7.215	1 1/4	9.10
120A16	16	A	8.440	7.689	1 1/4	10.60
120A17	17	A	8.920	8.163	1 1/4	12.60
120A18	18	A	9.410	8.638	1 1/4	13.60
120A19	19	A	9.890	9.113	1 1/4	15.10
120A20	20	A	10.370	9.589	1 1/4	16.90
120A21	21	A	10.850	10.064	1 1/4	18.70
120A22	22	A	11.330	10.540	1 1/4	20.00
120A23	23	A	11.810	11.016	1 1/4	22.10
120A24	24	A	12.290	11.492	1 1/4	24.80
120A25	25	A	12.770	11.968	1 1/4	26.80
120A26	26	A	13.250	12.444	1 1/2	28.30
120A27	27	A	13.730	12.921	1 1/2	30.90
120A28	28	A	14.210	13.397	1 1/2	33.60
120A30	30	A	15.170	14.350	1 1/2	39.00
120A32	32	A	16.130	15.303	1 1/2	43.90
120A33	33	A	16.610	15.780	1 1/2	48.20
120A34	34	A	17.090	16.257	1 1/2	50.00
120A35	35	A	17.570	16.734	1 1/2	52.00
120A36	36	A	18.050	17.211	1 1/2	56.00
120A40	40	A	19.960	19.118	1 1/2	71.00
120A42	42	A	20.920	20.072	1 1/2	75.00
120A45	45	A	22.350	25.503	1 1/2	88.00
120A48	48	A	23.790	22.935	1 1/2	103.00
120A54	54	A	26.650	25.798	1 1/2	140.00
120A60	60	A	29.520	28.661	1 1/2	160.00
120A70	70	A	34.300	33.434	1 1/2	216.00
120A80	80	A	39.080	38.207	1 1/2	284.00
120A90	90	A	43.850	42.981	1 1/2	358.00

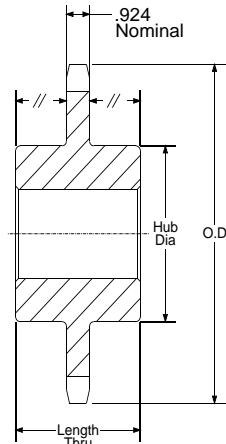
SPROCKETS FOR No.120 PITCH (1 1/2" ANSI) CHAIN

STEEL

1 1/2" PITCH



TYPE -B



TYPE -C



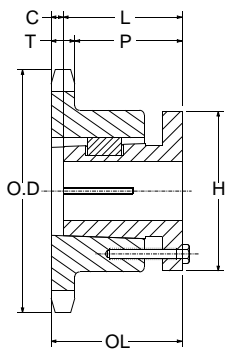
SPROCKETS FOR No.120 PITCH (1 1/2" ANSI) CHAIN

PART NUMBER	NO. OF TEETH	TYPE	DIAMETERS		BORE RANGE		HUB DIMENSIONS		WEIGHT LBS.
			O.D.	P.D.	MIN	MAX	DIAMETER	LENGTH THRU	
120B9	9	B	5.020	4.386	1 3/8	1 13/16	3 3/8	2 1/4	5.30
120B10	10	B	5.520	4.854	1 3/8	2 1/4	3 3/4	2 1/4	7.10
120B11	11	B	6.010	5.324	1 3/8	2 3/8	3 9/16	2 1/8	7.60
120B12	12	B	6.500	5.796	1 3/8	2 3/4	4 1/8	2 1/8	9.90
120B13	13	B	6.990	6.268	1 3/8	3	4 9/16	2 1/4	12.40
120B14	14	B	7.470	6.741	1 3/8	3 1/4	4 3/4	2 1/4	14.40
120B15	15	B	7.960	7.215	1 1/4	3 1/4	4 3/4	2 3/8	16.70
120B16	16	B	8.440	7.689	1 1/4	3 1/2	5 1/4	2 3/8	19.90
120B17	17	B	8.920	8.163	1 1/4	3 1/2	5 1/4	2 3/8	20.80
120B18	18	B	9.410	8.638	1 1/4	3 1/2	5 1/4	2 3/8	22.20
120B19	19	B	9.890	9.113	1 1/4	3 1/2	5 1/4	2 3/8	24.80
120B20	20	B	10.370	9.589	1 1/4	3 1/2	5 1/4	2 3/8	25.80
120B21	21	B	10.850	10.064	1 1/4	3 1/2	5 1/4	2 3/8	26.70
120B22	22	B	11.330	10.540	1 1/4	3 1/2	5 1/4	2 3/8	28.20
120B23	23	B	11.810	11.016	1 1/4	3 1/2	5 1/4	2 3/8	30.30
120B24	24	B	12.290	11.492	1 1/4	3 1/2	5 1/4	2 3/8	32.10
120B25	25	B	12.770	11.968	1 1/4	3 1/2	5 1/4	2 3/8	34.60
120B26	26	B	13.250	12.444	1 1/2	4	6	2 1/2	40.00
120B28	28	B	14.210	13.397	1 1/2	4	6	2 1/2	44.90
120B30	30	B	15.170	14.350	1 1/2	4	6	2 1/2	50.20
120B32	32	B	16.130	15.303	1 1/2	4	6	2 1/2	56.00
120B35	35	B	17.570	16.734	1 1/2	4	6	2 1/2	62.40
120B36	36	B	18.050	17.221	1 1/2	4	6	2 1/2	66.40
120C40	40	C	19.960	19.118	1 1/2	4	6	3 3/4	92.00
120C42	42	C	20.920	20.072	1 1/2	4	6	3 3/4	98.00
120C45	45	C	22.350	25.503	1 1/2	4	6	3 3/4	99.20
120C48	48	C	23.790	22.935	1 1/2	4	6	4	113.00
120C54	54	C	26.650	25.798	1 1/2	4	6	4	133.00
120C60	60	C	29.520	28.661	1 1/2	5 1/4	7	4	160.00
120C70	70	C	34.300	33.434	1 1/2	5 3/8	7 1/2	4 1/2	206.00
120C80	80	C	39.080	38.207	1 1/2	5 3/8	7 1/2	4 1/2	254.00

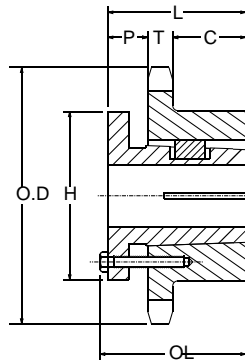
SPROCKETS FOR No.120 PITCH (1 1/2" ANSI) CHAIN

STEEL

1 1/2" PITCH



TYPE -4



TYPE -5



[ SINGLE SPLIT BUSH ]

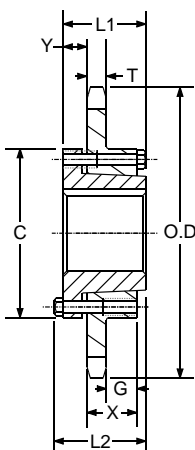
SPROCKETS FOR No.120 PITCH (1 1/2" ANSI) CHAIN

OLD PART NUMBER	NEW PART NUMBER	NO. OF TEETH	BUSHING	TYPE	DIAMETERS		BORE RANGE		DIMENSIONS						WEIGHT LBS.
					O.D.	P.D.	MIN	MAX	T(NOM.)	O.L.	L	P	C	H	
120Q11	120ST11-Q1	11	Q1	4	6.01	5.324	3/4	2 11/16	0.924	2 25/32	2 1/2	1 9/16	0	4 1/8	4.8
120Q12	120ST12-Q1	12	Q1	4	6.50	5.796	3/4	2 11/16	0.924	2 25/32	2 1/2	1 9/16	0	4 1/8	6.3
120Q13	120ST13-Q1	13	Q1	4	6.99	6.268	3/4	2 11/16	0.924	2 25/32	2 1/2	1 9/16	0	4 1/8	7.9
120Q14	120ST14-Q1	14	Q1	4	7.47	6.215	3/4	2 11/16	0.924	2 25/32	2 1/2	1 9/16	0	4 1/8	9.1
120Q15	120ST15-Q1	15	Q1	4	7.96	7.215	3/4	2 11/16	0.924	2 25/32	2 1/2	1 9/16	0	4 1/8	10.4
120Q16	120ST16-Q1	16	Q1	4	8.89	7.689	3/4	2 11/16	0.924	2 25/32	2 1/2	1 9/16	0	4 1/8	11.8
120R16	120ST16-R1	16	R1	4	8.39	7.689	1 1/8	3 3/4	0.924	3 5/32	2 1/8	1 15/16	0	5 3/8	12.3
120Q17	120ST17-Q1	17	Q1	4	8.88	8.163	3/4	2 11/16	0.924	2 25/32	2 1/2	1 9/16	0	4 1/8	13.4
120R17	120ST17-R1	17	R1	4	8.88	8.163	1 1/8	3 3/4	0.924	3 5/32	2 7/8	1 15/16	0	5 3/8	13.6
120Q18	120ST18-Q1	18	Q1	4	9.41	8.638	3/4	2 11/16	0.924	2 25/32	2 1/2	1 9/16	0	4 1/8	15.6
120R18	120ST18-R1	18	R1	4	9.41	8.638	1 1/8	3 3/4	0.924	3 5/32	3 5/32	1 9/16	0	5 3/8	15.9
120R19	120ST19-R1	19	R1	4	9.89	9.113	1 1/8	3 3/4	0.924	3 5/32	3 5/32	1 9/16	0	5 3/8	16.8
120R20	120ST20-R1	20	R1	4	10.37	9.589	1 1/8	3 3/4	0.924	3 5/32	2 7/8	1 15/16	0	5 3/8	18.8
120R21	120ST21-R1	21	R1	4	10.85	10.064	1 1/8	3 3/4	0.924	3 5/32	2 7/8	1 15/16	0	5 3/8	21.0
120R22	120ST22-R1	22	R1	4	11.33	10.540	1 1/8	3 3/4	0.924	3 5/32	2 7/8	1 15/16	0	5 3/8	22.5
120R23	120ST23-R1	23	R1	4	11.81	11.016	1 1/8	3 3/4	0.924	3 5/32	2 7/8	1 15/16	0	5 3/8	24.8
120R24	120ST24-R1	24	R1	4	12.29	11.492	1 1/8	3 3/4	0.924	3 5/32	2 7/8	1 15/16	0	5 3/8	26.9
120R25	120ST25-R1	25	R1	4	12.77	11.968	1 1/8	3 3/4	0.924	3 5/32	2 7/8	1 15/16	0	5 3/8	29.8
120R26	120ST26-R1	26	R1	5	13.25	12.444	1 1/8	3 3/4	0.924	3 5/32	2 7/8	7/8	1 1/16	5 3/8	32.9
120R28	120ST28-R1	28	R1	5	14.21	13.397	1 1/8	3 3/4	0.924	3 5/32	2 7/8	7/8	1 1/16	5 3/8	38.3
120R30	120ST30-R1	30	R1	5	15.17	14.350	1 1/8	3 3/4	0.924	3 5/32	2 7/8	7/8	1 1/16	5 3/8	43.4
120R32	120ST32-R1	32	R1	5	16.13	15.303	1 1/8	3 3/4	0.924	3 5/32	2 7/8	7/8	1 1/16	5 3/8	49.4
120R35	120ST35-R2	35	R2	6	17.57	16.734	1 3/8	3 5/8	0.924	5 5/32	4 7/8	1 15/16	2	5 3/8	68.0
120R36	120ST36-R2	36	R2	6	18.05	17.211	1 3/8	3 5/8	0.924	5 5/32	4 7/8	1 15/16	2	5 3/8	72.0
120R40	120ST40-R2	40	R2	6	19.96	19.118	1 3/8	3 5/8	0.924	5 5/32	4 7/8	1 15/16	2	5 3/8	82.0
120S40	120ST40-S1	40	S1	5	19.96	19.118	1 11/16	4 1/4	0.924	4 3/4	4 3/8	1 1/16	2 3/8	6 3/8	83.0
120S42	120ST42-S1	42	S1	5	20.92	20.072	1 11/16	4 1/4	0.924	4 3/4	4 3/8	1 1/16	2 3/8	6 3/8	90.0
120R45	120ST45-R2	45	R2	6	22.35	21.503	1 3/8	3 5/8	0.924	5 5/32	4 7/8	1 15/16	2	5 3/8	102.0
120S45	120ST45-S1	45	S1	5	22.35	21.503	1 11/16	4 1/4	0.924	4 3/4	4 3/8	1 1/16	2 3/8	6 3/8	100.0
120S48	120ST48-S1	48	S1	5	23.79	22.935	1 11/16	4 1/4	0.924	4 3/4	4 7/8	1 1/16	2 3/8	6 3/8	111.0
120S54	120ST54-S1	54	S1	5	26.65	25.198	1 11/16	4 1/4	0.924	4 3/4	4 3/8	1 1/16	2 3/8	6 3/8	138.0
120R60	120ST60-S1	60	S1	6	29.52	28.661	1 3/8	3 5/8	0.924	5 5/32	4 7/8	1 15/16	2	5 3/8	179.0
120S60	120ST60-S1	60	S1	5	29.52	28.661	1 11/16	4 1/4	0.924	4 3/4	4 3/8	1 1/16	2 3/8	6 3/8	180.0
120R70	120ST70-R2	70	R2	6	34.30	33.434	1 3/8	3 5/8	0.924	5 5/32	4 7/8	1 15/16	2	5 3/8	148.0
120S70	120ST70-S2	70	S2	5	34.30	33.434	1 7/8	4 3/16	0.924	7 1/8	6 3/4	2 15/16	2 7/8	6 3/8	167.0
120R80	120ST80-R2	80	R2	6	39.08	38.207	1 3/8	3 5/8	0.924	5 5/32	4 7/8	1 15/16	2	5 3/8	291.0
120S80	120ST80-S2	80	S2	6	39.08	38.207	1 7/8	4 3/16	0.924	7 1/8	6 3/4	2 15/16	2 7/8	6 3/8	305.0

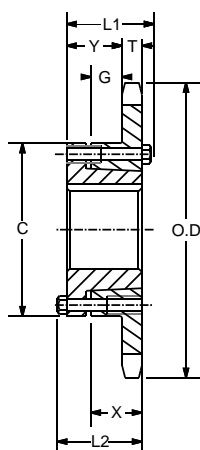
SPROCKETS FOR No.120 PITCH (1 1/2" ANSI) CHAIN

STEEL

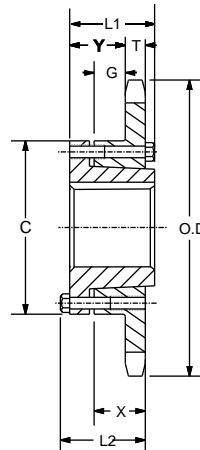
1 1/2" PITCH



TYPE -C



TYPE -B



TYPE -B1



[ SINGLE OD BUSH ]

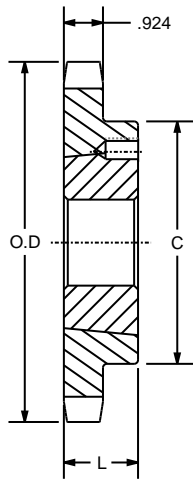
SPROCKETS FOR No.120 PITCH (1 1/2" ANSI) CHAIN

OLD PART NUMBER	NEW PART NUMBER	NO. OF TEETH	BUSHING	TYPE	DIAMETERS		BORE RANGE		DIMENSIONS							WEIGHT	
					O.D.	P.D.	MIN	MAX	L1	L2	C	Y	G	X	T (NOM.)	WITH HUB	RIM ONLY
120SF12	120QD12-SF	12	SF	B	6.500	5.796	1/2	2 15/16	2 1/4	2 1/4	4 5/8	1 5/64	21/64	1 1/4	0.924	7.7	4.7
120SF13	120QD13-SF	13	SF	B	6.990	6.268	1/2	2 15/16	2 1/4	2 1/4	4 5/8	1 5/64	21/64	1 1/4	0.924	9.1	6.1
120SF14	120QD14-SF	14	SF	B	7.470	6.741	1/2	2 15/16	2 1/4	2 1/4	4 5/8	1 5/64	21/64	1 1/4	0.924	10.4	7.4
120SF15	120QD15-SF	15	SF	B	7.960	7.215	1/2	2 15/16	2 1/4	2 1/4	4 5/8	1 5/64	21/64	1 1/4	0.924	11.8	8.0
120E16	120QD16-E	16	E	B1	8.440	7.689	7/8	3 1/2	2 5/8	2 15/16	6	1 9/16	45/64	1 5/8	0.924	21.2	11.2
120E17	120QD17-E	17	E	B1	8.920	8.163	7/8	3 1/2	2 5/8	2 15/16	6	1 9/16	45/64	1 5/8	0.924	23.4	13.4
120E18	120QD18-E	18	E	B1	9.410	8.638	7/8	3 1/2	2 5/8	2 15/16	6	1 9/16	45/64	1 5/8	0.924	24.8	14.8
120E19	120QD19-E	19	E	B1	9.890	9.113	7/8	3 1/2	2 5/8	2 15/16	6	1 9/16	45/64	1 5/8	0.924	26.5	16.5
120E20	120QD20-E	20	E	B1	10.370	9.589	7/8	3 1/2	2 5/8	2 15/16	6	1 9/16	45/64	1 5/8	0.924	29.2	19.2
120E21	120QD21-E	21	E	B1	10.850	10.064	7/8	3 1/2	2 5/8	2 15/16	6	1 9/16	45/64	1 5/8	0.924	29.9	19.9
120E22	120QD22-E	22	E	B1	11.330	10.540	7/8	3 1/2	2 5/8	2 15/16	6	1 9/16	45/64	1 5/8	0.924	31.6	21.6
120E23	120QD23-E	23	E	B1	11.810	11.016	7/8	3 1/2	2 5/8	2 15/16	6	1 9/16	45/64	1 5/8	0.924	33.8	23.8
120E24	120QD24-E	24	E	B1	12.290	11.492	7/8	3 1/2	2 5/8	2 15/16	6	1 9/16	45/64	1 5/8	0.924	35.8	25.8
120E25	120QD25-E	25	E	B1	12.770	11.968	7/8	3 1/2	2 5/8	2 15/16	6	1 9/16	45/64	1 5/8	0.924	38.1	28.1
120E26	120QD26-E	26	E	B1	13.250	12.444	7/8	3 1/2	2 5/8	2 15/16	6	1 9/16	45/64	1 5/8	0.924	39.9	29.9
120E28	120QD28-E	28	E	B1	14.210	13.397	7/8	3 1/2	2 5/8	2 15/16	6	1 9/16	45/64	1 5/8	0.924	49.7	34.7
120E30	120QD30-E	30	E	B1	15.170	14.350	7/8	3 1/2	2 5/8	2 15/16	6	1 9/16	45/64	1 5/8	0.924	49.4	39.4
120F32	120QD32-F	32	F	C	16.130	15.303	1	3 15/16	3 5/8	4	6 5/8	1	1 37/64	2 1/2	0.924	62.0	50.5
120F35	120QD35-F	35	F	C	17.570	16.734	1	3 15/16	3 5/8	4	6 5/8	1	1 37/64	2 1/2	0.924	71.0	59.5
120F36	120QD36-F	36	F	C	18.050	17.211	1	3 15/16	3 5/8	4	6 5/8	1	1 37/64	2 1/2	0.924	74.9	63.4
120F40	120QD40-F	40	F	C	19.960	19.118	1	3 15/16	3 5/8	4	6 5/8	1	1 37/64	2 1/2	0.924	88.5	77.0
120F42	120QD42-F	42	F	C	20.920	20.072	1	3 15/16	3 5/8	4	6 5/8	1	1 37/64	2 1/2	0.924	94.5	83.0
120F45	120QD45-F	45	F	C	22.350	21.503	1	3 15/16	3 5/8	4	6 5/8	1	1 37/64	2 1/2	0.924	95.5	84.0
120F48	120QD48-F	48	F	C	23.790	22.935	1	3 15/16	3 5/8	4	6 5/8	1	1 37/64	2 1/2	0.924	103.5	92.0
120F54	120QD54-F	54	F	C	26.650	25.798	1	3 15/16	3 5/8	4	6 5/8	1	1 37/64	2 1/2	0.924	125.0	114.0
120J60	120QD60-J	60	J	C	29.520	28.661	1 1/2	4 7/16	4 1/2	5	7 1/4	1 3/16	2 17/64	3 3/16	0.924	159.0	140.0
120J70	120QD70-J	70	J	C	34.300	33.434	1 1/2	4 7/16	4 1/2	5	7 1/4	1 3/16	2 17/64	3 3/16	0.924	196.0	177.0
120J80	120QD80-J	80	J	C	39.080	38.207	1 1/2	4 7/16	4 1/2	5	7 1/4	1 3/16	2 17/64	3 3/16	0.924	241.0	222.0

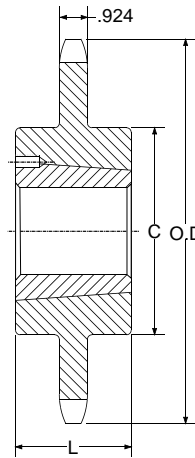
SPROCKETS FOR No.120 PITCH (1 1/2" ANSI) CHAIN

STEEL

1 1/2" PITCH



TYPE -B



TYPE -C



[ SINGLE TAPER BUSH ]

SPROCKETS FOR No.120 PITCH (1 1/2" ANSI) CHAIN

OLD PART NUMBER	NEW PART NUMBER	NO. OF TEETH	BUSHING	TYPE	DIAMETERS		BORE RANGE		DIMENSIONS		WEIGHT	
					O.D.	P.D.	MIN	MAX	L	C	RIM ONLY	BUSH ONLY
120BTB12	120TL12-2012	12	2012	B	6.498	5.796	1/2	2	1 1/4	3 9/16	5.5	1.7
120BTB13	120TL13-2517	13	2517	B	6.896	6.268	1/2	2 1/2	1 3/4	4 1/4	6.0	3.5
120BTB14	120TL14-2517	14	2517	B	7.472	6.471	1/2	2 1/2	1 3/4	4 1/4	7.0	3.5
120BTB15	120TL15-2517	15	2517	B	7.957	7.215	1/2	2 1/2	1 3/4	4 1/4	8.0	3.5
120BTB16	120TL16-3020	16	3020	B	8.441	7.689	15/16	3	2	5 1/4	10.0	6.5
120BTB17	120TL17-3020	17	3020	B	8.924	8.163	15/16	3	2	5 1/4	11.0	6.5
120BTB18	120TL18-3020	18	3020	B	9.407	8.638	15/16	3	2	5 1/4	12.0	6.5
120BTB19	120TL19-3020	19	3020	B	9.889	9.113	15/16	3	2	5 1/4	14.0	6.5
120BTB20	120TL20-3020	20	3020	B	10.371	9.588	15/16	3	2	5 1/4	15.5	6.5
120BTB21	120TL21-3020	21	3020	B	10.851	10.064	15/16	3	2	5 1/4	17.5	6.5
120BTB24	120TL24-3020	24	3020	B	12.294	11.492	15/16	3	2	5 1/4	23.5	6.5
120BTB26	120TL26-3020	26	3020	B	13.254	12.444	15/16	3	2	5 1/4	28.5	6.5
120BTB30	120TL30-3020	30	3020	B	15.171	14.351	15/16	3	2	5 1/4	33.5	6.5
120CTB35	120TL35-3020	35	3020	C	17.566	16.734	15/16	3	2	5 1/4	52.0	6.5
120CTB45	120TL45-3030	45	3030	C	22.351	21.503	15/16	3	3	5 7/8	82.0	9.2
120CTB60	120TL60-3535	60	3535	C	29.522	28.661	1 3/16	3 1/2	3 1/2	6 1/2	140.0	14.0
120CTB70	120TL70-3535	70	3535	C	34.301	33.434	1 3/16	3 1/2	3 1/2	6 1/2	175.0	14.0
120CTB80	120TL80-3535	80	3535	C	39.078	38.207	1 3/16	3 1/2	3 1/2	6 1/2	220.0	14.0