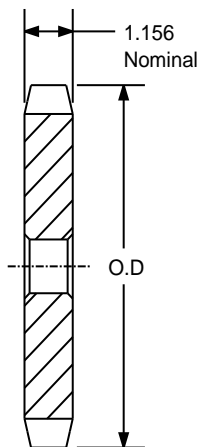


SPROCKETS FOR No.160 PITCH (2" ANSI) CHAIN

STEEL

2" PITCH



TYPE - A

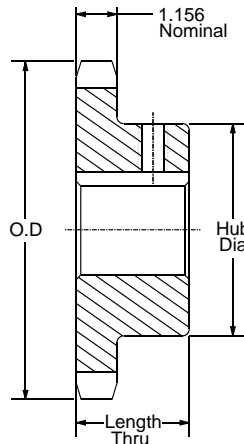
SPROCKETS FOR No.160 PITCH (2" ANSI) CHAIN

PART NUMBER	NO. OF TEETH	TYPE	DIAMETERS		STOCK BORE	WEIGHT
			O.D.	P.D.		
160A8	8	A	6.030	5.226	1 1/2	5.0
160A9	9	A	6.700	5.848	1 1/2	7.0
160A10	10	A	7.360	6.472	1 1/2	8.0
160A11	11	A	8.010	7.099	1 1/2	10.0
160A12	12	A	8.660	7.727	1 1/2	12.0
160A13	13	A	9.310	8.357	1 1/2	16.0
160A14	14	A	9.960	8.988	1 1/2	17.0
160A15	15	A	10.610	9.620	1 1/2	21.0
160A16	16	A	11.260	10.252	1 1/2	24.0
160A17	17	A	11.900	10.885	1 1/2	27.0
160A18	18	A	12.540	11.518	1 1/2	30.0
160A19	19	A	13.190	12.151	1 1/2	34.0
160A20	20	A	13.830	12.785	1 1/2	38.0
160A21	21	A	14.470	13.419	1 1/2	42.0
160A22	22	A	15.110	14.053	1 1/2	46.0
160A23	23	A	15.750	14.688	1 1/2	50.0
160A24	24	A	16.390	15.323	1 1/2	56.0
160A25	25	A	17.030	15.958	1 1/2	61.0
160A26	26	A	17.670	16.593	1 1/2	65.0
160A27	27	A	18.310	17.228	1 1/2	71.0
160A28	28	A	18.950	17.863	1 1/2	77.0
160A30	30	A	20.230	19.134	1 1/2	90.0
160A35	35	A	23.420	22.312	1 1/2	121.0
160A40	40	A	26.610	25.491	1 1/2	138.0
160A45	45	A	29.800	28.671	1 1/2	204.0
160A54	54	A	35.540	34.397	1 1/2	294.0
160A60	60	A	39.360	38.215	1 1/2	366.0
160A70	70	A	45.730	44.578	1 1/2	507.0
160A80	80	A	52.100	50.943	1 1/2	656.0

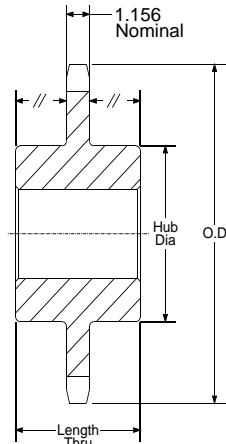
SPROCKETS FOR No.160 PITCH (2" ANSI) CHAIN

STEEL

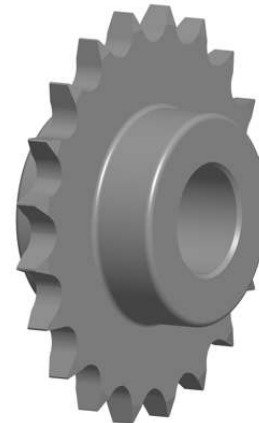
2" PITCH



TYPE -B



TYPE -C



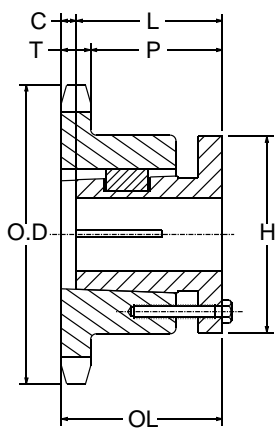
SPROCKETS FOR No.160 PITCH (2" ANSI) CHAIN

PART NUMBER	NO. OF TEETH	TYPE	DIAMETERS		BORE RANGE		HUB DIMENSIONS		WEIGHT LBS.
			O.D.	P.D.	MIN	MAX	DIAMETER	LENGTH THRU	
160B8	8	B	6.030	5.226	1 1/2	1 7/8	3 1/4	2 1/4	8.0
160B9	9	B	6.700	5.848	1 1/2	2.125	3 5/8	2 1/4	10.0
160B10	10	B	7.360	6.472	1 1/2	2 3/4	4 1/8	2 1/4	12.0
160B11	11	B	8.010	7.099	1 1/2	3 1/4	4 3/4	2 1/2	17.0
160B12	12	B	8.660	7.727	1 1/2	3 3/4	5 1/2	2 1/2	21.0
160B13	13	B	9.310	8.357	1 1/2	4	6	2 3/4	28.0
160B14	14	B	9.960	8.988	1 1/2	4 1/2	6 1/2	2 3/4	32.0
160B15	15	B	10.610	9.620	1 1/2	5 1/4	7	2 3/4	37.0
160B16	16	B	11.260	10.252	1 1/2	5 1/4	7	2 3/4	41.0
160B17	17	B	11.900	10.885	1 1/2	5 1/4	7	2 3/4	45.0
160B18	18	B	12.540	11.518	1 1/2	5 1/4	7	2 3/4	48.0
160B19	19	B	13.190	12.151	1 1/2	5 1/4	7	2 3/4	52.0
160B20	20	B	13.830	12.785	1 1/2	5 1/4	7	2 3/4	56.0
160B21	21	B	14.470	13.419	1 1/2	5 1/4	7	2 3/4	59.0
160B22	22	B	15.110	14.053	1 1/2	5 1/4	7	2 3/4	65.0
160B23	23	B	15.750	14.688	1 1/2	5 1/4	7	2 3/4	68.0
160B24	24	B	16.390	15.323	1 1/2	5 1/4	7	3	77.0
160B25	25	B	17.030	15.958	1 1/2	5 1/4	7	3	81.0
160B26	26	B	17.670	16.593	1 1/2	5 1/4	7	3	86.0
160B27	27	B	18.310	17.228	1 1/2	5 1/4	7	3	91.0
160B28	28	B	18.950	17.863	1 1/2	5 1/4	7	3	98.0
160B30	30	B	20.230	19.134	1 1/2	5 1/4	7	3	108.0
160C35	35	C	23.420	22.312	1 1/2	5 1/2	8	4 1/2	154.0
160C40	40	C	26.610	25.491	1 1/2	5 1/2	8	4 1/2	196.0
160C45	45	C	29.800	28.671	1 1/2	5 1/2	8	5	234.0
160C54	54	C	35.540	34.397	1 1/2	5 1/2	8	5	276.0
160C60	60	C	39.360	38.215	1 1/2	5 1/2	8	5	329.0
160C70	70	C	45.730	44.578	1 1/2	5 1/2	8	5	446.0
160C80	80	C	52.100	50.943	1 1/2	5 1/2	8	6	612.0

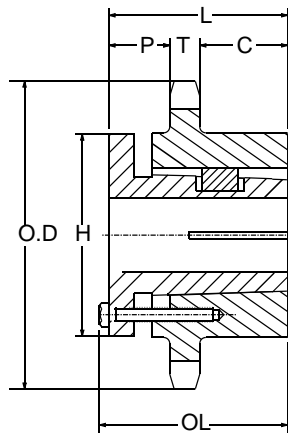
SPROCKETS FOR No.160 PITCH (2" ANSI) CHAIN

STEEL

2" PITCH



TYPE -4



TYPE -6



[ SINGLE SPLIT BUSH ]

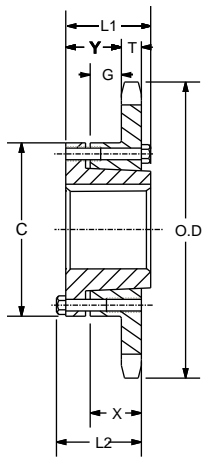
SPROCKETS FOR No.160 PITCH (2" ANSI) CHAIN

NEW PART NUMBER	NO. OF TEETH	BUSHING	TYPE	DIAMETERS		BORE RANGE		DIMENSIONS						WEIGHT LBS.
				O.D.	P.D.	MIN	MAX	T(NOM.)	O.L.	L	P	C	H	
160R11	11	R1	4	8.01	7.099	1 1/8	3 3/4	1.156	3 13/32	2 7/8	1 31/32	1/4	5 3/8	10.8
160R12	12	R1	4	8.66	7.727	1 1/8	3 3/4	1.156	3 13/32	2 7/8	1 31/32	1/4	5 3/8	14.2
160R13	13	R1	4	9.31	8.357	1 1/8	3 3/4	1.156	3 13/32	2 7/8	1 23/32	0	5 3/8	15.5
160R14	14	R1	4	9.96	8.988	1 1/8	3 3/4	1.156	3 13/32	2 7/8	1 23/32	0	5 3/8	18.5
160R15	15	R1	4	10.61	9.620	1 1/8	3 3/4	1.156	3 13/32	2 7/8	1 23/32	0	5 3/8	21.6
160R16	16	R1	4	11.25	10.252	1 1/8	3 3/4	1.156	3 13/32	2 7/8	1 23/32	0	5 3/8	25.0
160R17	17	R1	4	11.90	10.885	1 1/8	3 3/4	1.156	3 13/32	2 7/8	1 23/32	0	5 3/8	28.0
160R18	18	R1	4	12.54	11.518	1 1/8	3 3/4	1.156	3 13/32	2 7/8	1 23/32	0	5 3/8	31.9
160R19	19	R1	4	13.19	12.151	1 1/8	3 3/4	1.156	3 13/32	2 7/8	1 23/32	0	5 3/8	35.9
160R20	20	R2	6	13.83	12.785	1 3/8	3 5/8	1.156	5 5/32	4 7/8	1 23/32	2	5 3/8	51.0
160R21	21	R2	6	14.47	13.419	1 3/8	3 5/8	1.156	5 5/32	4 7/8	1 23/32	2	5 3/8	56.0
160R22	22	R2	6	15.11	14.053	1 3/8	3 5/8	1.156	5 5/32	4 7/8	1 23/32	2	5 3/8	60.0
160R23	23	R2	6	15.75	14.688	1 3/8	3 5/8	1.156	5 5/32	4 7/8	1 23/32	2	5 3/8	65.0
160R24	24	R2	6	16.39	15.323	1 3/8	3 5/8	1.156	5 5/32	4 7/8	1 23/32	2	5 3/8	71.5
160R25	25	R2	6	17.03	15.958	1 3/8	3 5/8	1.156	5 5/32	4 7/8	1 23/32	2	5 3/8	74.0
160R26	26	R2	6	17.67	16.593	1 3/8	3 5/8	1.156	5 5/32	4 7/8	1 23/32	2	5 3/8	79.0
160R28	28	R2	6	18.95	17.863	1 3/8	3 5/8	1.156	5 5/32	4 7/8	1 23/32	2	5 3/8	99.8
160R30	30	R2	6	20.23	19.134	1 3/8	3 5/8	1.156	5 5/32	4 7/8	1 23/32	2	5 3/8	106.0
160R30	30	S2	6	20.23	19.134	1 7/8	4 3/16	1.156	7 1/8	6 3/8	2 23/32	2 7/8	6 3/8	115.0
160R35	35	S2	6	23.42	22.312	1 7/8	4 3/16	1.156	7 1/8	6 3/8	2 23/32	2 7/8	6 3/8	150.0
160S40	40	S2	6	26.61	25.491	1 7/8	4 3/16	1.156	7 1/8	6 3/8	2 23/32	2 7/8	6 3/8	165.0
160S45	45	S2	6	29.80	28.671	1 7/8	4 3/16	1.156	7 1/8	6 3/8	2 23/32	2 7/8	6 3/8	204.0
160U60	60	U0	6	39.36	38.215	2 3/8	5 1/2	1.156	5 25/32	5 1/4	1 21/32	1 15/16	8 3/8	354.0
160U70	70	U0	6	45.73	44.578	2 3/8	5 1/2	1.156	5 25/32	5 1/4	1 21/32	1 15/16	8 3/8	308.0
160U80	80	U1	6	52.10	50.943	2 3/8	5 1/2	1.156	7 19/32	7 1/8	2 19/32	2 7/8	8 3/8	394.0

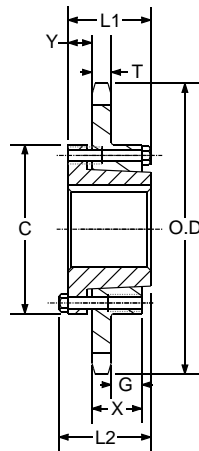
SPROCKETS FOR No.160 PITCH (2" ANSI) CHAIN

STEEL

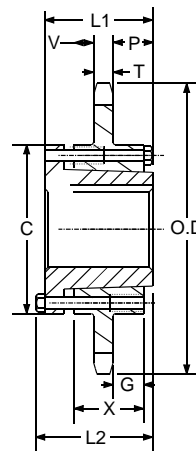
2" PITCH



TYPE -B1



TYPE -C



TYPE -C1



[ SINGLE OD BUSH ]

SPROCKETS FOR No.160 PITCH (2" ANSI) CHAIN

NEW PART NUMBER	NO. OF TEETH	BUSHING	TYPE	DIAMETERS		BORE RANGE		DIMENSIONS								WEIGHT		
				O.D.	P.D.	MIN	MAX	L1	L2	C	Y	P	G	V	X	T (NOM.)	WITH HUB	RIM ONLY
160E12	12	E	B1	8.660	7.727	7/8	3 1/2	2 5/8	2 15/16	6	1 5/16	1/8	15/32		1.625	1.156	21.0	11
160E13	13	E	B1	9.310	8.357	7/8	3 1/2	2 5/8	2 15/16	6	1 5/16	1/8	15/32		1.625	1.156	24.0	14
160E14	14	E	B1	9.960	8.988	7/8	3 1/2	2 5/8	2 15/16	6	1 5/16	1/8	15/32		1.625	1.156	26.0	16
160F15	15	F	B1	10.610	9.620	1	3 15/16	3 5/8	4	6 5/8	2 15/16	1/8	1 11/32		2.5	1.156	35.5	24
160F16	16	F	B1	11.260	10.252	1	3 15/16	3 5/8	4	6 5/8	2 15/16	1/8	1 11/32		2.5	1.156	38.5	27
160F17	17	F	B1	11.900	10.885	1	3 15/16	3 5/8	4	6 5/8	2 15/16	1/8	1 11/32		2.5	1.156	42.5	31
160F18	18	F	B1	12.540	11.518	1	3 15/16	3 5/8	4	6 5/8	2 15/16	1/8	1 11/32		2.5	1.156	46.5	35
160F19	19	F	B1	13.190	12.151	1	3 15/16	3 5/8	4	6 5/8	2 15/16	1/8	1 11/32		2.5	1.156	49.5	38
160F20	20	F	B1	13.830	12.785	1	3 15/16	3 5/8	4	6 5/8	2 15/16	1/8	1 11/32		2.5	1.156	53.5	42
160F21	21	F	B1	14.740	13.419	1	3 15/16	3 5/8	4	6 5/8	2 15/16	1/8	1 11/32		2.5	1.156	56.5	45
160F22	22	F	B1	15.110	14.053	1	3 15/16	3 5/8	4	6 5/8	2 15/16	1/8	1 11/32		2.5	1.156	62.5	51
160F23	23	F	B1	15.750	14.688	1	3 15/16	3 5/8	4	6 5/8	2 15/16	1/8	1 11/32		2.5	1.156	66.5	55
160F24	24	F	B1	16.390	15.323	1	3 15/16	3 5/8	4	6 5/8	2 15/16	1/8	1 11/32		2.5	1.156	70.5	59
160F25	25	F	B1	17.030	15.958	1	3 15/16	3 5/8	4	6 5/8	2 15/16	1/8	1 11/32		2.5	1.156	75.5	64
160J26	26	J	C	17.670	16.593	1 1/2	4 7/16	4 1/2	5	7 1/4	1 3/16	2 1/8	2 1/32		3.1875	1.156	92.5	74
160J28	28	J	C	18.950	17.863	1 1/2	4.4375	4 1/2	5	7 1/4	1 3/16	2 1/8	2 1/32		3.1875	1.156	103.0	84
160J30	30	J	C	20.230	19.134	1 1/2	4.4375	4 1/2	5	7 1/4	1 3/16	2 1/8	2 1/32		3.1875	1.156	115.0	96
160J35	35	J	C	23.420	22.312	1 1/2	4.4375	4 1/2	5	7 1/4	1 3/16	2 1/8	2 1/32		3.1875	1.156	135.0	116
160M40	40	M	C1	26.610	25.491	2	5 1/2	6 3/4	6 3/4	9	2 11/16	2 11/16	2 13/32	1 19/32	5.1875	1.156	211.0	174
160M45	45	M	C1	29.800	28.671	2	5 1/2	6 3/4	6 3/4	9	2 11/16	2 11/16	2 13/32	1 19/32	5.1875	1.156	245.0	208
160M54	54	M	C1	35.540	34.397	2	5 1/2	6 3/4	6 3/4	9	2 11/16	2 11/16	2 13/32	1 19/32	5.1875	1.156	299.0	262
160M60	60	M	C1	39.360	38.215	2	5 1/2	6 3/4	6 3/4	9	2 11/16	2 11/16	2 13/32	1 19/32	5.1875	1.156	347.0	310
160M70	70	M	C1	45.730	44.578	2	5 1/2	6 3/4	6 3/4	9	2 11/16	2 11/16	2 13/32	1 19/32	5.1875	1.156	468.0	431
160M80	80	M	C1	52.100	50.943	2	5 1/2	6 3/4	6 3/4	9	2 11/16	2 11/16	2 13/32	1 19/32	5.1875	1.156	567.0	530