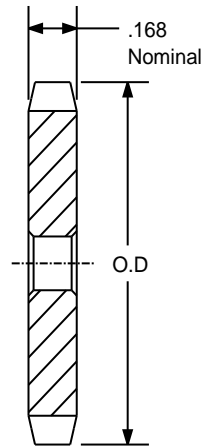


SPROCKETS FOR No.35 PITCH (3/8" ANSI) CHAIN

STEEL

3/8" PITCH



TYPE - A

SPROCKETS FOR No.35 PITCH (3/8" ANSI) CHAIN						
PART NUMBER	NO. OF TEETH	TYPE	DIAMETERS		STOCK BORE	WEIGHT
			O.D.	P.D.		
35A15	15	A	1.990	1.804	1/2	0.10
35A16	16	A	2.110	1.922	1/2	0.12
35A17	17	A	2.230	2.041	1/2	0.12
35A18	18	A	2.350	2.159	1/2	0.14
35A19	19	A	2.470	2.278	1/2	0.16
35A20	20	A	2.590	2.397	1/2	0.20
35A21	21	A	2.710	2.516	1/2	0.20
35A22	22	A	2.830	2.635	1/2	0.22
35A23	23	A	2.950	2.754	1/2	0.24
35A24	24	A	3.070	2.873	1/2	0.26
35A25	25	A	3.190	2.992	1/2	0.28
35A26	26	A	3.310	3.111	1/2	0.28
35A27	27	A	3.430	3.232	1/2	0.34
35A28	28	A	3.550	3.349	1/2	0.34
35A30	30	A	3.790	3.588	1/2	0.46
35A32	32	A	4.030	3.826	5/8	0.46
35A35	35	A	4.390	4.183	5/8	0.60
35A36	36	A	4.510	4.303	5/8	0.62
35A40	40	A	4.990	4.780	19/32	0.70
35A42	42	A	5.230	5.018	19/32	0.78
35A45	45	A	5.590	5.379	19/32	0.88
35A48	48	A	5.950	5.734	19/32	1.21
35A54	54	A	6.660	6.449	19/32	1.32
35A60	60	A	7.380	7.165	23/32	1.66
35A70	70	A	8.580	8.358	23/32	2.30
35A72	72	A	8.810	8.597	23/32	2.56
35A80	80	A	9.770	9.552	23/32	3.16
35A84	84	A	10.250	10.029	23/32	3.26
35A96	96	A	11.680	11.461	23/32	4.64
35A112	112	A	13.590	13.371	23/32	5.05

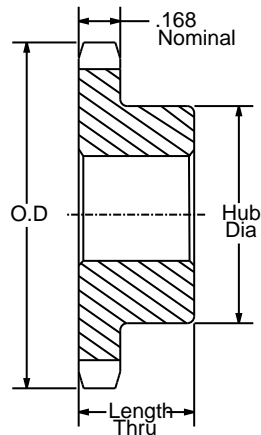
\*Has recessed groove in hub chain clearance.

Maximum bores shown will accommodate standard keyseat and setscrew over keyseat. Slightly larger bores are possible with no keyseats, shallow keyseats, or setscrew at angle to keyseat.

SPROCKETS FOR No.35 PITCH (3/8" ANSI) CHAIN

STEEL

3/8" PITCH



TYPE - B



SPROCKETS FOR No.35 PITCH (3/8" ANSI) CHAIN

PART NUMBER	NO. OF TEETH	TYPE	DIAMETERS		BORE RANGE		DIMENSIONS		WEIGHT LBS.
			O.D.	P.D.	MIN	MAX	HUB DIAMETER	LENGTH THRU	
35B8	8	B	1.130	0.979	3/8	3/8	3/4*	3/4	0.07
35B9	9	B	1.260	1.096	3/8	3/8	27/32*	3/4	0.09
35B10	10	B	1.380	1.213	3/8	9/16	31/32*	3/4	0.14
35B11	11	B	1.500	1.331	3/8	9/16	1 1/16*	3/4	0.17
35B12	12	B	1.630	1.448	1/2	9/16	1 7/32*	3/4	0.20
35B13	13	B	1.750	1.566	1/2	11/16	1 1/4*	3/4	0.23
35B14	14	B	1.870	1.685	1/2	7/8	1 1/4	3/4	0.25
35B15	15	B	1.990	1.804	1/2	7/8	1 11/32	3/4	0.29
35B16	16	B	2.110	1.922	1/2	15/16	1 15/32	3/4	0.35
35B17	17	B	2.230	2.041	1/2	1 1/16	1 19/32	3/4	0.42
35B18	18	B	2.350	2.159	1/2	1 3/16	1 23/32	3/4	0.48
35B19	19	B	2.470	2.278	1/2	1 1/4	1 27/32	3/4	0.54
35B20	20	B	2.590	2.397	1/2	1 5/16	1 15/16	3/4	0.59
35B21	21	B	2.710	2.516	1/2	1 3/8	2	7/8	0.80
35B22	22	B	2.830	2.635	1/2	1 3/8	2	7/8	0.80
35B23	23	B	2.950	2.754	1/2	1 3/8	2	7/8	0.82
35B24	24	B	3.070	2.873	1/2	1 3/8	2	7/8	0.88
35B25	25	B	3.190	2.992	1/2	1 3/8	2	7/8	0.88
35B26	26	B	3.310	3.111	1/2	1 3/8	2	7/8	0.90
35B27	27	B	3.430	3.232	1/2	1 3/8	2	7/8	0.94
35B28	28	B	3.550	3.349	1/2	1 3/8	2	7/8	0.94
35B30	30	B	3.790	3.588	1/2	1 3/8	2	7/8	1.02
35B32	32	B	4.030	3.826	1/2	1 3/8	2	7/8	1.24
35B35	35	B	4.390	4.183	5/8	1 1/2	2 1/4	7/8	1.50
35B36	36	B	4.510	4.303	5/8	1 1/2	2 1/4	7/8	1.56
35B40	40	B	4.990	4.780	5/8	1 1/2	2 1/4	1	1.62
35B42	42	B	5.230	5.018	5/8	1 1/2	2 1/4	1	1.68
35B45	45	B	5.590	5.379	5/8	1 1/2	2 1/4	1	1.78
35B48	48	B	5.950	5.734	5/8	1 1/2	2 1/4	1	1.88
35B54	54	B	6.660	6.449	5/8	1 1/2	2 1/4	1	2.20
35B60	60	B	7.380	7.165	3/4	1 1/2	2 1/4	1	2.48
35B70	70	B	8.580	8.358	3/4	1 1/2	2 1/4	1	3.12
35B72	72	B	8.810	8.597	3/4	1 1/2	2 1/4	1	3.42
35B80	80	B	9.770	9.552	3/4	1 1/2	2 1/4	1	3.82
35B84	84	B	10.250	10.029	3/4	1 1/2	2 1/4	1	4.24
35B96	96	B	11.680	11.461	3/4	1 1/2	2 1/4	1	5.16
35B112	112	B	13.590	13.371	3/4	1 1/2	2 1/4	1	6.70

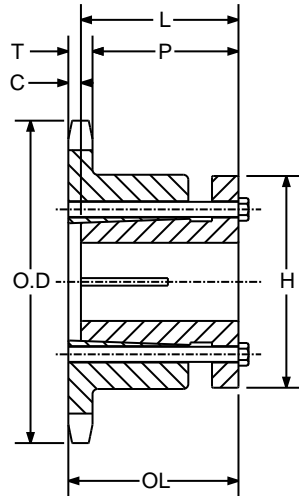
\*Has recessed groove in hub chain clearance.

Maximum bores shown will accommodate standard keyseat and setscrew over keyseat. Slightly larger bores are possible with no keyseats, shallow keyseats, or setscrew at angle to keyseat.

SPROCKETS FOR No.35 PITCH (3/8" ANSI) CHAIN

STEEL

3/8" PITCH



TYPE - 3



[ SINGLE SPLIT BUSH ]

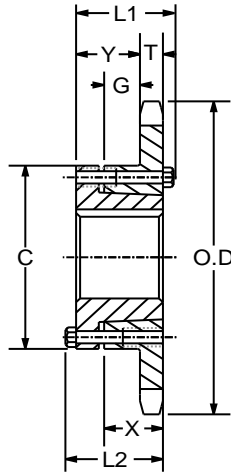
SPROCKETS FOR No.35 PITCH (3/8" ANSI) CHAIN

OLD PART NUMBER	NEW PART NUMBER	NO. OF TEETH	BUSHING	TYPE	DIAMETERS		BORE RANGE		DIMENSIONS						WEIGHT LBS.
					O.D.	P.D.	MIN	MAX	T(NOM)	O.L.	L	P	C	H	
35G15	35ST15-G	15	G	3	1.990	1.804	3/8	1	0.168	1 11/32	1	1	5/32	2	0.30
35G16	35ST16-G	16	G	3	2.100	1.922	3/8	1	0.168	1 11/32	1	1	5/32	2	0.30
35G17	35ST17-G	17	G	3	2.230	2.041	3/8	1	0.168	1 11/32	1	1	5/32	2	0.30
35G18	35ST18-G	18	G	3	2.350	2.159	3/8	1	0.168	1 11/32	1	1	5/32	2	0.30
35G19	35ST19-G	19	G	3	2.470	2.278	3/8	1	0.168	1 1/4	1	29/32	1/16	2	0.30
35H19	35ST19-H	19	H	3	2.470	2.278	3/8	1 1/2	0.168	1 1/2	1 1/4	1 5/32	1/16	2 1/2	0.50
35H20	35ST20-H	20	H	3	2.590	2.397	3/8	1 1/2	0.168	1 1/2	1 1/4	1 5/32	1/16	2 1/2	0.50
35H21	35ST21-H	21	H	3	2.700	2.516	3/8	1 1/2	0.168	1 1/2	1 1/4	1 5/32	1/16	2 1/2	0.60
35H22	35ST22-H	22	H	3	2.830	2.635	3/8	1 1/2	0.168	1 1/2	1 1/4	1 5/32	1/16	2 1/2	0.70
35H23	35ST23-H	23	H	3	2.950	2.754	3/8	1 1/2	0.168	1 1/2	1 1/4	1 5/32	1/16	2 1/2	0.70
35H24	35ST24-H	24	H	3	3.050	2.873	3/8	1 1/2	0.168	1 1/2	1 1/4	1 5/32	1/16	2 1/2	0.80
35H25	35ST25-H	25	H	3	3.190	2.992	3/8	1 1/2	0.168	1 1/2	1 1/4	1 5/32	1/16	2 1/2	0.80
35H26	35ST26-H	26	H	3	3.310	3.111	3/8	1 1/2	0.168	1 1/2	1 1/4	1 5/32	1/16	2 1/2	0.80
35H28	35ST28-H	28	H	3	3.550	3.349	3/8	1 1/2	0.168	1 1/2	1 1/4	1 5/32	1/16	2 1/2	0.90
35H30	35ST30-H	30	H	3	3.790	3.588	3/8	1 1/2	0.168	1 1/2	1 1/4	1 5/32	1/16	2 1/2	0.90
35H32	35ST32-H	32	H	3	4.030	3.826	3/8	1 1/2	0.168	1 1/2	1 1/4	1 5/32	1/16	2 1/2	0.90
35H35	35ST35-H	35	H	3	4.390	4.183	3/8	1 1/2	0.168	1 1/2	1 1/4	1 5/32	1/16	2 1/2	1.00
35H36	35ST36-H	36	H	3	4.510	4.303	3/8	1 1/2	0.168	1 1/2	1 1/4	1 5/32	1/16	2 1/2	1.00
35H40	35ST40-H	40	H	3	4.990	4.780	3/8	1 1/2	0.168	1 1/2	1 1/4	1 5/32	1/16	2 1/2	1.20
35H42	35ST42-H	42	H	3	5.230	5.018	3/8	1 1/2	0.168	1 1/2	1 1/4	1 5/32	1/16	2 1/2	1.20
35H45	35ST45-H	45	H	3	5.590	5.379	3/8	1 1/2	0.168	1 1/2	1 1/4	1 5/32	1/16	2 1/2	1.40
35H48	35ST48-H	48	H	3	5.950	5.734	3/8	1 1/2	0.168	1 1/2	1 1/4	1 5/32	1/16	2 1/2	1.50
35H54	35ST54-H	54	H	3	6.660	6.449	3/8	1 1/2	0.168	1 1/2	1 1/4	1 5/32	1/16	2 1/2	1.80
35H60	35ST60-H	60	H	3	7.380	7.165	3/8	1 1/2	0.168	1 1/2	1 1/4	1 5/32	1/16	2 1/2	2.30
35H70	35ST70-H	70	H	3	8.580	8.358	3/8	1 1/2	0.168	1 1/2	1 1/4	1 5/32	1/16	2 1/2	2.80
35H72	35ST72-H	72	H	3	8.810	8.597	3/8	1 1/2	0.168	1 1/2	1 1/4	1 5/32	1/16	2 1/2	3.00
35H80	35ST80-H	80	H	3	9.770	9.552	3/8	1 1/2	0.168	1 1/2	1 1/4	1 5/32	1/16	2 1/2	3.80
35H84	35ST84-H	84	H	3	10.250	10.029	3/8	1 1/2	0.168	1 1/2	1 1/4	1 5/32	1/16	2 1/2	4.00
35H96	35ST96-H	96	H	3	11.680	11.461	3/8	1 1/2	0.168	1 1/2	1 1/4	1 5/32	1/16	2 1/2	5.30
35H112	35ST112-H	112	H	3	13.590	13.371	3/8	1 1/2	0.168	1 1/2	1 1/4	1 5/32	1/16	2 1/2	6.80

SPROCKETS FOR No.35 PITCH (3/8" ANSI) CHAIN

STEEL

3/8" PITCH



[ SINGLE "OD" BUSH ]

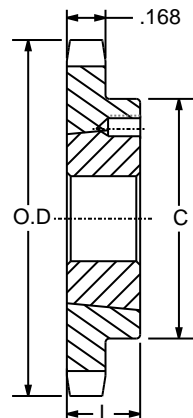
TYPE - QD-B

SPROCKETS FOR No.35 PITCH (3/8" ANSI) CHAIN																		
OLD PART NUMBER	NEW PART NUMBER	NO. OF TEETH	BUSHING	TYPE	DIAMETERS		BORE RANGE		DIMENSIONS							WEIGHT		
					O.D.	P.D.	MIN	MAX	L1	L2	C	Y	G	X	T(NOM)	WITH HUB	RIM ONLY	
35JA19	35QD19-JA	19	JA	QD-B	2.470	2.278	1/2	1 1/4	1 1/8	1 1/8	2 1/16	53/64	29/64	5/8	0.168	1.18	0.28	
35JA20	35QD20-JA	20	JA	QD-B	2.590	2.397	1/2	1 1/4	1 1/8	1 1/8	2 1/16	53/64	29/64	5/8	0.168	1.22	0.32	
35JA21	35QD21-JA	21	JA	QD-B	2.710	2.516	1/2	1 1/4	1 1/8	1 1/8	2 1/16	53/64	29/64	5/8	0.168	1.24	0.34	
35JA22	35QD22-JA	22	JA	QD-B	2.830	2.635	1/2	1 1/4	1 1/8	1 1/8	2 1/16	53/64	29/64	5/8	0.168	1.26	0.36	
35JA23	35QD23-JA	23	JA	QD-B	2.950	2.745	1/2	1 1/4	1 1/8	1 1/8	2 1/16	53/64	29/64	5/8	0.168	1.28	0.38	
35JA24	35QD24-JA	24	JA	QD-B	3.070	2.873	1/2	1 1/4	1 1/8	1 1/8	2 1/16	53/64	29/64	5/8	0.168	1.30	0.40	
35JA25	35QD25-JA	25	JA	QD-B	3.190	2.992	1/2	1 1/4	1 1/8	1 1/8	2 1/16	53/64	29/64	5/8	0.168	1.34	0.44	
35JA26	35QD26-JA	26	JA	QD-B	3.310	3.111	1/2	1 1/4	1 1/8	1 1/8	2 1/16	53/64	29/64	5/8	0.168	1.36	0.46	
35JA27	35QD27-JA	27	JA	QD-B	3.430	3.230	1/2	1 1/4	1 1/8	1 1/8	2 1/16	53/64	29/64	5/8	0.168	1.38	0.48	
35JA28	35QD28-JA	28	JA	QD-B	3.550	3.349	1/2	1 1/4	1 1/8	1 1/8	2 1/16	53/64	29/64	5/8	0.168	1.42	0.52	
35JA30	35QD30-JA	30	JA	QD-B	3.790	3.588	1/2	1 1/4	1 1/8	1 1/8	2 1/16	53/64	29/64	5/8	0.168	1.46	0.56	
35JA32	35QD32-JA	32	JA	QD-B	4.030	3.826	1/2	1 1/4	1 1/8	1 1/8	2 1/16	53/64	29/64	5/8	0.168	1.68	0.78	
35JA35	35QD35-JA	35	JA	QD-B	4.390	4.183	1/2	1 1/4	1 1/8	1 1/8	2 1/16	53/64	29/64	5/8	0.168	1.94	1.04	
35SH36	35QD36-SH	36	SH	QD-B	4.510	4.303	1/2	1 5/8	1 7/16	1 7/16	2 11/16	1 5/64	41/64	13/16	0.168	2.06	1.06	
35SH40	35QD40-SH	40	SH	QD-B	4.990	4.780	1/2	1 5/8	1 7/16	1 7/16	2 11/16	1 5/64	41/64	13/16	0.168	2.18	1.18	
35SH42	35QD42-SH	42	SH	QD-B	5.230	5.018	1/2	1 5/8	1 7/16	1 7/16	2 11/16	1 5/64	41/64	13/16	0.168	2.26	1.26	
35SH45	35QD45-SH	45	SH	QD-B	5.590	5.376	1/2	1 5/8	1 7/16	1 7/16	2 11/16	1 5/64	41/64	13/16	0.168	2.40	1.40	
35SH48	35QD48-SH	48	SH	QD-B	5.950	5.734	1/2	1 5/8	1 7/16	1 7/16	2 11/16	1 5/64	41/64	13/16	0.168	2.58	1.58	
35SH54	35QD54-SH	54	SH	QD-B	6.660	6.449	1/2	1 5/8	1 7/16	1 7/16	2 11/16	1 5/64	41/64	13/16	0.168	2.88	1.88	
35SH60	35QD60-SH	60	SH	QD-B	7.380	7.165	1/2	1 5/8	1 7/16	1 7/16	2 11/16	1 5/64	41/64	13/16	0.168	3.28	2.28	
35SH70	35QD70-SH	70	SH	QD-B	8.580	8.358	1/2	1 5/8	1 7/16	1 7/16	2 11/16	1 5/64	41/64	13/16	0.168	3.94	2.94	
35SH72	35QD72-SH	72	SH	QD-B	8.810	8.597	1/2	1 5/8	1 7/16	1 7/16	2 11/16	1 5/64	41/64	13/16	0.168	4.14	3.14	
35SH80	35QD80-SH	80	SH	QD-B	9.770	9.552	1/2	1 5/8	1 7/16	1 7/16	2 11/16	1 5/64	41/64	13/16	0.168	4.68	3.68	
35SH84	35QD84-SH	84	SH	QD-B	10.250	10.029	1/2	1 5/8	1 7/16	1 7/16	2 11/16	1 5/64	41/64	13/16	0.168	4.86	3.96	
35SH96	35QD96-SH	96	SH	QD-B	11.680	11.461	1/2	1 5/8	1 7/16	1 7/16	2 11/16	1 5/64	41/64	13/16	0.168	6.38	5.38	
35SH112	35QD112-SH	112	SH	QD-B	13.590	13.371	1/2	1 5/8	1 7/16	1 7/16	2 11/16	1 5/64	41/64	13/16	0.168	7.60	6.60	

SPROCKETS FOR No.35 PITCH (3/8" ANSI) CHAIN

STEEL

3/8" PITCH



[ SINGLE TAPER BUSH ]

TYPE - B

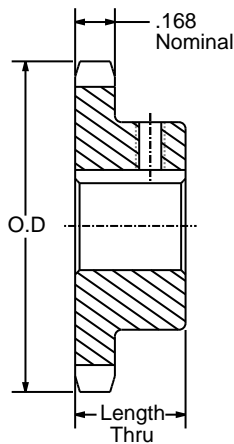
SPROCKETS FOR No.35 PITCH (3/8" ANSI) CHAIN												
OLD PART NUMBER	NEW PART NUMBER	NO. OF TEETH	BUSHING	TYPE	DIAMETERS		BORE RANGE		DIMENSIONS		WEIGHT	
					O.D.	P.D.	MIN	MAX	L	C	RIM ONLY	BUSH ONLY
35BTB18	35TL18-1008	18	1008	B	2.352	2.159	1/2	1	7/8	1 7/8*	0.40	0.30
35BTB19	35TL19-1008	19	1008	B	2.472	2.278	1/2	1	7/8	1 13/16	0.50	0.30
35BTB20	35TL20-1008	20	1008	B	2.593	2.397	1/2	1	7/8	1 15/16	0.60	0.30
35BTB21	35TL21-1008	21	1008	B	2.713	2.516	1/2	1	7/8	2 1/16	0.70	0.30
35BTB22	35TL22-1210	22	1210	B	2.883	2.635	1/2	1 1/4	1	2 3/8	0.80	0.60
35BTB23	35TL23-1210	23	1210	B	2.954	2.754	1/2	1 1/4	1	2 7/16	0.90	0.60
35BTB24	35TL24-1210	24	1210	B	3.074	2.873	1/2	1 1/4	1	2 7/16	0.90	0.60
35BTB25	35TL25-1210	25	1210	B	3.194	2.992	1/2	1 1/4	1	2 7/16	1.20	0.60
35BTB26	35TL26-1610	26	1610	B	3.314	3.111	1/2	1 5/8	1	2 7/8*	1.10	0.90
35BTB28	35TL28-1610	28	1610	B	3.553	3.349	1/2	1 5/8	1	2 7/8	1.20	0.90
35BTB30	35TL30-1610	30	1610	B	3.793	3.588	1/2	1 5/8	1	3 1/8	1.20	0.90
35BTB32	35TL32-1610	32	1610	B	4.032	3.826	1/2	1 5/8	1	3 1/4	1.30	0.90
35BTB35	35TL35-1610	35	1610	B	4.392	4.183	1/2	1 5/8	1	3 1/4	1.40	0.90
35BTB36	35TL36-1610	36	1610	B	4.511	4.303	1/2	1 5/8	1	3 1/4	1.40	0.90
35BTB40	35TL40-1610	40	1610	B	4.990	4.786	1/2	1 5/8	1	3 1/4	1.90	0.90
35BTB42	35TL42-1610	42	1610	B	5.229	5.018	1/2	1 5/8	1	3 1/4	2.00	0.90
35BTB45	35TL45-1610	45	1610	B	5.588	5.376	1/2	1 5/8	1	3 1/4	2.10	0.90
35BTB48	35TL48-1610	48	1610	B	5.946	5.734	1/2	1 5/8	1	3 1/4	2.30	0.90
35BTB54	35TL54-1610	54	1610	B	6.663	6.449	1/2	1 5/8	1	3 1/4	2.60	0.90
35BTB60	35TL60-1610	60	1610	B	7.380	7.165	1/2	1 5/8	1	3 1/4	3.00	0.90
35BTB70	35TL70-1610	70	1610	B	8.575	8.358	1/2	1 5/8	1	3 1/4	3.70	0.90
35BTB72	35TL72-1610	72	1610	B	8.814	8.597	1/2	1 5/8	1	3 1/4	3.90	0.90
35BTB80	35TL80-1610	80	1610	B	9.770	9.552	1/2	1 5/8	1	3 1/4	4.50	0.90
35BTB84	35TL84-1610	84	1610	B	10.247	10.029	1/2	1 5/8	1	3 1/4	4.90	0.90
35BTB96	35TL96-1610	96	1610	B	11.680	11.461	1/2	1 5/8	1	3 1/4	6.00	0.90
35BTB112	35TL112-1610	112	1610	B	13.590	13.371	1/2	1 5/8	1	3 1/4	7.80	0.90

\* Has recessed hub for chain clearance.

SPROCKETS FOR No.35 PITCH (3/8" ANSI) CHAIN

STEEL

3/8" PITCH



[ SINGLE TYPE BS ]

DIAMETERS TYPE - BS

SPROCKETS FOR No.35 PITCH (3/8" ANSI) CHAIN															
PART NUMBER	NO. OF TEETH	TYPE	DIAMETERS		LENGTH THRU	STOCK FINISHED BORES INCLUDES KEYWAY AND SETSCREW									WEIGHT LBS.
			O.D.	P.D.											
35BS9	9	BS	1.260	1.096	3/4	3/8*									0.10
35BS10	10	BS	1.380	1.214	3/4	3/8*	1/2*	ø5/8							0.11
35BS11	11	BS	1.500	1.331	3/4	3/8*	1/2*	ø5/8	ø3/4						0.15
35BS12	12	BS	1.630	1.449	3/4		1/2*	5/8	ø3/4						0.18
35BS13	13	BS	1.750	1.567	3/4		1/2*	5/8	3/4						0.20
35BS14	14	BS	1.870	1.685	3/4		1/2*	5/8	3/4						0.22
35BS15	15	BS	1.990	1.804	3/4		1/2*	5/8	3/4	7/8	1				0.24
35BS16	16	BS	2.110	1.922	3/4		1/2*	5/8	3/4	7/8	1				0.29
35BS17	17	BS	2.230	2.041	3/4		1/2*	5/8	3/4	7/8	1				0.36
35BS18	18	BS	2.350	2.159	3/4		1/2*	5/8	3/4	7/8	1				0.39
35BS19	19	BS	2.470	2.278	3/4		1/2*	5/8	3/4		1				0.44
35BS20	20	BS	2.590	2.397	3/4		1/2*	5/8	3/4		1				0.51
35BS21	21	BS	2.710	2.516	7/8		1/2*	5/8	3/4		1				0.75
35BS22	22	BS	2.830	2.635	7/8		1/2*	5/8	3/4		1				0.78
35BS23	23	BS	2.950	2.754	7/8		1/2*	5/8	3/4		1				0.78
35BS24	24	BS	3.070	2.873	7/8		1/2*	5/8	3/4		1				0.79
35BS25	25	BS	3.190	2.992	7/8		1/2*	5/8	3/4		1				0.80
35BS26	26	BS	3.310	3.111	7/8			5/8	3/4	7/8	1	1 1/8	1 3/16	1 1/4	0.84
35BS27	27	BS	3.430	3.230	7/8			5/8	3/4	7/8	1	1 1/8	1 3/16	1 1/4	0.88
35BS28	28	BS	3.550	3.349	7/8			5/8	3/4	7/8	1	1 1/8	1 3/16	1 1/4	0.86
35BS30	30	BS	3.790	3.588	7/8			5/8	3/4	7/8	1	1 1/8	1 3/16	1 1/4	0.96
35BS32	32	BS	4.030	3.826	7/8			5/8	3/4	7/8	1	1 1/8	1 3/16	1 1/4	1.14
35BS35	35	BS	4.390	4.183	1			5/8	3/4	7/8	1	1 1/8	1 3/16	1 1/4	1.38
35BS36	36	BS	4.510	4.303	1			5/8	3/4	7/8	1	1 1/8	1 3/16	1 1/4	1.41
35BS40	40	BS	4.990	4.786	1			5/8	3/4	7/8	1	1 1/8	1 3/16	1 1/4	1.56
35BS42	42	BS	5.230	5.018	1			5/8	3/4	7/8	1	1 1/8	1 3/16	1 1/4	1.64
35BS45	45	BS	5.590	5.376	1			5/8	3/4	7/8	1	1 1/8	1 3/16	1 1/4	1.74
35BS48	48	BS	5.950	5.734	1			5/8	3/4	7/8	1	1 1/8	1 3/16	1 1/4	1.86
35BS54	54	BS	6.660	6.449	1			5/8	3/4	7/8	1	1 1/8	1 3/16	1 1/4	1.98
35BS60	60	BS	7.380	7.165	1				3/4	7/8	1	1 1/8	1 3/16	1 1/4	2.34
35BS70	70	BS	8.580	8.358	1				3/4	7/8	1	1 1/8	1 3/16	1 1/4	3.14
35BS72	72	BS	8.810	8.597	1				3/4	7/8	1	1 1/8	1 3/16	1 1/4	3.30
35BS80	80	BS	9.770	9.552	1				3/4	7/8	1	1 1/8	1 3/16	1 1/4	3.94
35BS84	84	BS	10.250	10.029	1				3/4	7/8	1	1 1/8	1 3/16	1 1/4	4.26
35BS96	96	BS	11.680	11.461	1				3/4	7/8	1	1 1/8	1 3/16	1 1/4	5.22
35BS112	112	BS	13.590	13.371	1				3/4	7/8	1	1 1/8	1 3/16	1 1/4	6.50

\* No Keyway  
 2 1/4 setscrews only in 1/2" & 3/8" bore.  
 © Keyway with setscrew at 90°. Hub diameter vary to suit different bore sizes.

NOTE: KEYWAY IS ON CENTER LINE OF TOOTH.