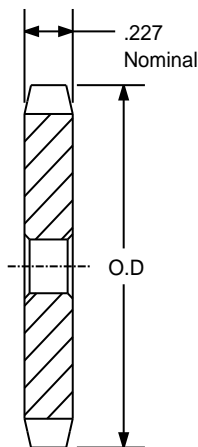


SPROCKETS FOR No.41 PITCH (1/2" ANSI) CHAIN

STEEL

1/2" PITCH



TYPE - A

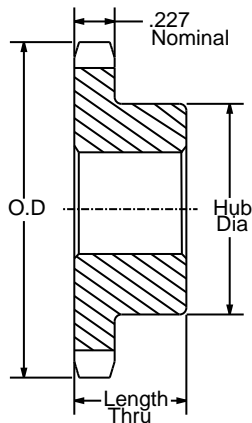
SPROCKETS FOR No.41 PITCH (1/2" ANSI) CHAIN						
PART NUMBER	NO. OF TEETH	TYPE	DIAMETERS		STOCK BORE	WEIGHT
			O.D.	P.D.		
41A15	15	A	2.650	2.405	5/8	0.28
41A16	16	A	2.810	2.563	5/8	0.34
41A17	17	A	2.980	2.721	5/8	0.36
41A18	18	A	3.140	2.879	5/8	0.44
41A19	19	A	3.300	3.038	5/8	0.46
41A20	20	A	3.460	3.196	5/8	0.52
41A21	21	A	3.620	3.355	5/8	0.60
41A22	22	A	3.780	3.513	5/8	0.66
41A23	23	A	3.940	3.672	5/8	0.72
41A24	24	A	4.100	3.831	5/8	0.82
41A25	25	A	4.260	3.989	5/8	0.88
41A26	26	A	4.420	4.148	5/8	0.94
41A27	27	A	4.580	4.307	5/8	1.00
41A28	28	A	4.740	4.466	5/8	1.08
41A30	30	A	5.060	4.783	19/32	1.20
41A32	32	A	5.380	5.101	19/32	1.44
41A35	35	A	5.860	5.578	19/32	1.70
41A36	36	A	6.020	5.737	19/32	1.84
41A40	40	A	6.650	6.373	23/32	2.22
41A42	42	A	6.970	6.691	23/32	2.50
41A45	45	A	7.450	7.168	23/32	2.52
41A48	48	A	7.930	7.645	23/32	2.92
41A54	54	A	8.890	8.599	23/32	3.54
41A60	60	A	9.840	9.554	23/32	4.60
41A70	70	A	11.430	11.145	23/32	6.22
41A72	72	A	11.750	11.463	23/32	6.32
41A80	80	A	13.030	12.736	23/32	8.46
41A84	84	A	13.660	13.372	23/32	9.12
41A96	96	A	15.570	15.281	15/16	11.84
41A112	112	A	18.120	17.828	15/16	15.84

*has recessed groove in hub for chain clearance.
 Maximum bores shown will accommodate standard keyseat and setscrew over keyseat.
 slightly larger bores are possible with no ks., shallow ks., or s.s. at angle to ks.,

SPROCKETS FOR No.41 PITCH (1/2" ANSI) CHAIN

STEEL

1/2" PITCH



TYPE - B

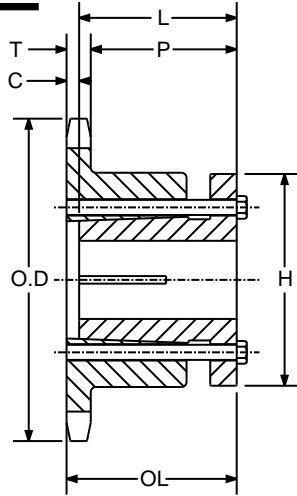
SPROCKETS FOR No.41 PITCH (1/2" ANSI) CHAIN									
PART NUMBER	NO. OF TEETH	TYPE	DIAMETERS		BORE RANGE		DIMENSIONS		WEIGHT LBS.
			O.D.	P.D.	MIN	MAX	HUB DIAMETER	LENGTH THRU	
41B6	6	B	1.170	1.000	3/8	3/8	21/32*	7/8	0.07
41B7	7	B	1.340	1.152	3/8	3/8	3/4*	7/8	0.10
41B8	8	B	1.510	1.307	1/2	1/2	63/64*	7/8	0.19
41B9	9	B	1.670	1.462	1/2	5/8	1 1/8*	7/8	0.20
41B10	10	B	1.840	1.618	1/2	3/4	1 1/4*	7/8	0.27
41B11	11	B	2.000	1.775	1/2	7/8	1 7/16*	7/8	0.35
41B12	12	B	2.170	1.932	1/2	15/16	1 9/16*	7/8	0.44
41B13	13	B	2.330	2.089	1/2	1	1 9/16*	7/8	0.50
41B14	14	B	2.490	2.247	1/2	1 1/4	1 3/4*	7/8	0.57
41B15	15	B	2.650	2.405	1/2	1 5/16	1 29/32	7/8	0.72
41B16	16	B	2.810	2.563	5/8	1 3/8	2 1/16	7/8	0.91
41B17	17	B	2.980	2.721	5/8	1 1/2	2 15/64	1	1.09
41B18	18	B	3.140	2.879	5/8	1 5/8	2 3/8	1	1.25
41B19	19	B	3.300	3.038	5/8	1 3/4	2 15/32	1	1.49
41B20	20	B	3.460	3.196	5/8	1 7/8	2 3/4	1	1.64
41B21	21	B	3.620	3.355	5/8	1 7/8	2 7/8	1	1.81
41B22	22	B	3.780	3.513	5/8	2	3	1	1.93
41B23	23	B	3.940	3.672	5/8	2 1/4	3 3/16	1	2.25
41B24	24	B	4.100	3.831	5/8	2 1/4	3 1/4	1	2.33
41B25	25	B	4.260	3.989	5/8	2 1/4	3 1/4	1	2.46
41B26	26	B	4.420	4.148	5/8	2 1/4	3 1/4	1	2.50
41B27	27	B	4.580	4.307	5/8	2 1/4	3 1/4	1	2.56
41B28	28	B	4.740	4.466	5/8	2 1/4	3 1/4	1	2.64
41B30	30	B	5.060	4.783	5/8	2 1/4	3 1/4	1	2.80
41B32	32	B	5.380	5.101	5/8	2 1/4	3 1/4	1	2.96
41B35	35	B	5.860	5.578	5/8	2 3/8	3 1/4	1	3.12
41B36	36	B	6.020	5.737	5/8	2 3/8	3 1/4	1	3.32
41B40	40	B	6.650	6.373	3/4	2 3/8	3 1/4	1 1/16	4.06
41B42	42	B	6.970	6.691	3/4	2 3/8	3 1/2	1 1/16	4.10
41B45	45	B	7.450	7.168	3/4	2 3/8	3 1/2	1 1/16	4.18
41B48	48	B	7.930	7.645	3/4	2 3/8	3 1/2	1 1/16	4.92
41B54	54	B	8.890	8.599	3/4	2 3/8	3 1/2	1 1/16	5.68
41B60	60	B	9.840	9.554	3/4	2 3/8	3 1/2	1 1/16	6.78
41B70	70	B	11.430	11.145	3/4	2 3/4	4	1 3/16	9.54
41B72	72	B	11.750	11.463	3/4	2 3/4	4	1 3/16	9.64
41B80	80	B	13.030	12.736	3/4	2 3/4	4	1 3/16	11.54
41B84	84	B	13.660	13.372	3/4	2 3/4	4	1 3/16	12.20
41B96	96	B	15.570	15.281	1	2 3/4	4	1 3/16	14.86
41B112	112	B	18.120	17.828	1	2 3/4	4	1 3/16	19.16

*has recessed groove in hub for chain clearance.
 Maximum bores shown will accommodate standard keyseat and setscrew over keyseat.
 slightly larger bores are possible with no ks., shallow ks., or s.s. at angle to ks.,

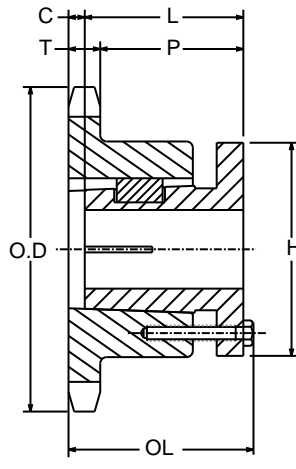
SPROCKETS FOR No.41 PITCH (1/2" ANSI) CHAIN

STEEL

1/2" PITCH



TYPE - 3



TYPE - 4



[SINGLE SPLIT BUSH]

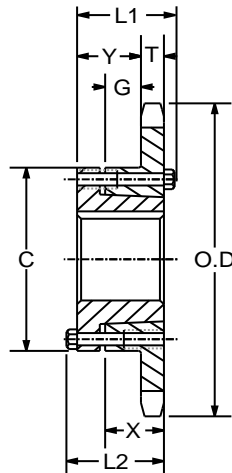
SPROCKETS FOR No.41 PITCH (1/2" ANSI) CHAIN

OLD PART NUMBER	NEW PART NUMBER	NO. OF TEETH	BUSHING	TYPE	DIAMETERS		BORE RANGE		DIMENSIONS					WEIGHT LBS.
					O.D.	P.D.	MIN	MAX	T(NOM)	O.L.	L	P	H	
41G12	41ST12-G	12	G	3	2.170	1.932	3/8	1	0.227	1 7/16	1	1 1/32	2	0.30
41G14	41ST14-G	14	G	3	2.490	2.247	3/8	1	0.227	1 7/16	1	1 1/32	2	0.40
41G15	41ST15-H	15	H	3	2.650	2.405	3/8	1 1/2	0.227	1 1/2	1 1/4	1 3/32	2 1/2	0.50
41G16	41ST16-H	16	H	3	2.800	2.653	3/8	1 1/2	0.227	1 1/2	1 1/4	1 3/32	2 1/2	0.50
41G17	41ST17-H	17	H	3	2.960	2.721	3/8	1 1/2	0.227	1 1/2	1 1/4	1 3/32	2 1/2	0.60
41G18	41ST18-H	18	H	3	3.140	2.879	3/8	1 1/2	0.227	1 1/2	1 1/4	1 3/32	2 1/2	0.70
41G19	41ST19-H	19	H	3	3.300	3.038	3/8	1 1/2	0.227	1 1/2	1 1/4	1 3/32	2 1/2	0.80
41G20	41ST20-H	20	H	3	3.450	3.196	3/8	1 1/2	0.227	1 1/2	1 1/4	1 3/32	2 1/2	0.80
41G21	41ST21-H	21	H	3	3.620	3.355	3/8	1 1/2	0.227	1 1/2	1 1/4	1 3/32	2 1/2	0.90
41G22	41ST22-H	22	H	3	3.750	3.513	3/8	1 1/2	0.227	1 1/2	1 1/4	1 3/32	2 1/2	0.90
41G23	41ST23-H	23	H	3	3.940	3.672	3/8	1 1/2	0.227	1 1/2	1 1/4	1 3/32	2 1/2	1.00
41G24	41ST24-H	24	H	3	4.100	3.831	3/8	1 1/2	0.227	1 1/2	1 1/4	1 3/32	2 1/2	1.10
41G25	41ST25-H	25	H	3	4.260	3.989	3/8	1 1/2	0.227	1 1/2	1 1/4	1 3/32	2 1/2	1.10
41G26	41ST26-H	26	H	3	4.420	4.158	3/8	1 1/2	0.227	1 1/2	1 1/4	1 3/32	2 1/2	1.10
41G27	41ST27-H	27	H	3	4.580	4.307	3/8	1 1/2	0.227	1 1/2	1 1/4	1 3/32	2 1/2	1.10
41G28	41ST28-H	28	H	3	4.700	4.466	3/8	1 1/2	0.227	1 1/2	1 1/4	1 3/32	2 1/2	1.20
41G30	41ST30-H	30	H	3	5.060	4.783	3/8	1 1/2	0.227	1 1/2	1 1/4	1 3/32	2 1/2	1.30
41G32	41ST32-H	32	H	3	5.380	5.101	3/8	1 1/2	0.227	1 1/2	1 1/4	1 3/32	2 1/2	1.50
41G35	41ST35-H	35	H	3	5.860	5.578	3/8	1 1/2	0.227	1 1/2	1 1/4	1 3/32	2 1/2	1.80
41G36	41ST36-P1	36	P1	4	6.020	5.737	1/2	1 3/4	0.227	2 3/16	1 15/16	1 19/32	3	2.50
41G40	41ST40-P1	40	P1	4	6.550	6.373	1/2	1 3/4	0.227	2 3/16	1 15/16	1 19/32	3	3.00
41G42	41ST42-P1	42	P1	4	6.970	6.691	1/2	1 3/4	0.227	2 3/16	1 15/16	1 19/32	3	3.10
41G45	41ST45-P1	45	P1	4	7.450	7.168	1/2	1 3/4	0.227	2 3/16	1 15/16	1 19/32	3	3.50
41G48	41ST48-P1	48	P1	4	7.930	7.645	1/2	1 3/4	0.227	2 3/16	1 15/16	1 19/32	3	4.00
41G54	41ST54-P1	54	P1	4	8.890	8.599	1/2	1 3/4	0.227	2 3/16	1 15/16	1 19/32	3	4.60
41G60	41ST60-P1	60	P1	4	9.840	9.554	1/2	1 3/4	0.227	2 3/16	1 15/16	1 19/32	3	5.50
41G70	41ST70-P1	70	P1	4	11.430	11.145	1/2	1 3/4	0.227	2 3/16	1 15/16	1 19/32	3	7.00
41G72	41ST72-P1	72	P1	4	11.750	11.463	1/2	1 3/4	0.227	2 3/16	1 15/16	1 19/32	3	7.90
41G80	41ST80-P1	80	P1	4	13.030	12.736	1/2	1 3/4	0.227	2 3/16	1 15/16	1 19/32	3	9.30
41G84	41ST84-P1	84	P1	4	13.660	13.372	1/2	1 3/4	0.227	2 3/16	1 15/16	1 19/32	3	9.70
41G96	41ST96-P1	96	P1	4	15.570	15.281	1/2	1 3/4	0.227	2 3/16	1 15/16	1 19/32	3	13.00
41G112	41ST112-P1	112	P1	4	18.120	17.828	1/2	1 3/4	0.227	2 3/16	1 15/16	1 19/32	3	18.00

SPROCKETS FOR No.41 PITCH (1/2" ANSI) CHAIN

STEEL

1/2" PITCH



TYPE - QD-1



[SINGLE "OD" BUSH]

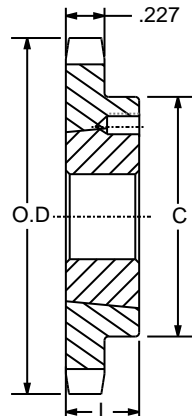
SPROCKETS FOR No.41 PITCH (1/2" ANSI) CHAIN

OLD PART NUMBER	NEW PART NUMBER	NO. OF TEETH	BUSHING	TYPE	DIAMETERS		BORE RANGE		DIMENSIONS					WEIGHT LBS.
					O.D.	P.D.	MIN	MAX	T(NOM)	O.L.	L	P	H	
41JA15	41QD15-JA	15	JA	QD-1	2.650	2.405	1/2	1 1/4	0.227	1 5/16	1	59/64	2	0.32
41JA16	41QD16-JA	16	JA	QD-1	2.810	2.563	1/2	1 1/4	0.227	1 5/16	1	59/64	2	0.44
41JA17	41QD17-JA	17	JA	QD-1	2.980	2.721	1/2	1 1/4	0.227	1 5/16	1	59/64	2	0.49
41JA18	41QD18-JA	18	JA	QD-1	3.140	2.879	1/2	1 1/4	0.227	1 5/16	1	59/64	2	0.53
41JA19	41QD19-JA	19	JA	QD-1	3.300	3.038	1/2	1 1/4	0.227	1 5/16	1	59/64	2	0.58
41SH20	41QD20-SH	20	SH	QD-1	3.460	3.196	1/2	1 5/8	0.227	1 23/32	1 5/16	1 17/64	2 11/16	0.99
41SH21	41QD21-SH	21	SH	QD-1	3.620	3.355	1/2	1 5/8	0.227	1 23/32	1 5/16	1 17/64	2 11/16	1.08
41SH22	41QD22-SH	22	SH	QD-1	3.780	3.513	1/2	1 5/8	0.227	1 23/32	1 5/16	1 17/64	2 11/16	1.16
41SH23	41QD23-SH	23	SH	QD-1	3.940	3.672	1/2	1 5/8	0.227	1 23/32	1 5/16	1 17/64	2 11/16	1.22
41SH24	41QD24-SH	24	SH	QD-1	4.100	3.831	1/2	1 5/8	0.227	1 23/32	1 5/16	1 17/64	2 11/16	1.28
41SH25	41QD25-SH	25	SH	QD-1	4.260	3.989	1/2	1 5/8	0.227	1 23/32	1 5/16	1 17/64	2 11/16	1.37
41SH26	41QD26-SH	26	SH	QD-1	4.420	4.148	1/2	1 5/8	0.227	1 23/32	1 5/16	1 17/64	2 11/16	1.42
41SH27	41QD27-SH	27	SH	QD-1	4.580	4.307	1/2	1 5/8	0.227	1 23/32	1 5/16	1 17/64	2 11/16	1.48
41SH28	41QD28-SH	28	SH	QD-1	4.740	4.466	1/2	1 5/8	0.227	1 23/32	1 5/16	1 17/64	2 11/16	1.54
41SH30	41QD30-SH	30	SH	QD-1	5.060	4.783	1/2	1 5/8	0.227	1 23/32	1 5/16	1 17/64	2 11/16	1.66
41SH32	41QD32-SH	32	SH	QD-1	5.380	5.101	1/2	1 5/8	0.227	1 23/32	1 5/16	1 17/64	2 11/16	1.79
41SH35	41QD35-SH	35	SH	QD-1	5.860	5.578	1/2	1 5/8	0.227	1 23/32	1 5/16	1 17/64	2 11/16	2.00
41SDS36	41QD36-SDS	36	SDS	QD-1	6.020	5.737	1/2	2	0.227	1 21/32	1 5/16	1 7/32	3 1/8	2.15
41SDS40	41QD40-SDS	40	SDS	QD-1	6.850	6.373	1/2	2	0.227	1 21/32	1 5/16	1 7/32	3 1/8	2.47
41SDS42	41QD42-SDS	42	SDS	QD-1	6.970	6.691	1/2	2	0.227	1 21/32	1 5/16	1 7/32	3 1/8	2.64
41SDS45	41QD45-SDS	45	SDS	QD-1	7.450	7.168	1/2	2	0.227	1 21/32	1 5/16	1 7/32	3 1/8	2.92
41SDS48	41QD48-SDS	48	SDS	QD-1	7.930	7.645	1/2	2	0.227	1 21/32	1 5/16	1 7/32	3 1/8	3.22
41SDS54	41QD54-SDS	54	SDS	QD-1	8.890	8.599	1/2	2	0.227	1 21/32	1 5/16	1 7/32	3 1/8	3.86
41SDS60	41QD60-SDS	60	SDS	QD-1	9.840	9.554	1/2	2	0.227	1 21/32	1 5/16	1 7/32	3 1/8	4.58
41SK70	41QD70-SDS	70	SK	QD-1	11.430	11.145	1/2	2 5/8	0.227	2 11/32	1 15/16	1 27/32	3 7/8	7.30
41SK72	41QD72-SDS	72	SK	QD-1	11.750	11.463	1/2	2 5/8	0.227	2 11/32	1 15/16	1 27/32	3 7/8	7.60
41SK80	41QD80-SDS	80	SK	QD-1	13.030	12.736	1/2	2 5/8	0.227	2 11/32	1 15/16	1 27/32	3 7/8	8.90
41SK84	41QD84-SDS	84	SK	QD-1	13.660	13.372	1/2	2 5/8	0.227	2 11/32	1 15/16	1 27/32	3 7/8	9.60
41SK96	41QD96-SDS	96	SK	QD-1	15.570	15.281	1/2	2 5/8	0.227	2 11/32	1 15/16	1 27/32	3 7/8	11.90
41SK112	41QD112-SDS	112	SK	QD-1	18.120	17.828	1/2	2 5/8	0.227	2 11/32	1 15/16	1 27/32	3 7/8	15.40

SPROCKETS FOR No.41 PITCH (1/2" ANSI) CHAIN

STEEL

1/2" PITCH



[SINGLE TAPER BUSH]

TYPE - B

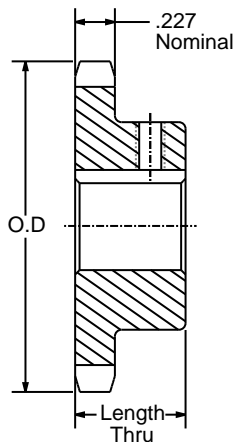
SPROCKETS FOR No.41 PITCH (1/2" ANSI) CHAIN												
OLD PART NUMBER	NEW PART NUMBER	NO. OF TEETH	BUSHING	TYPE	DIAMETERS		BORE RANGE		DIMENSIONS		WEIGHT	
					O.D.	P.D.	MIN	MAX	L	C	RIM ONLY	BUSH ONLY
41BTB14	41TL14-1008	14	1008	B	2.490	2.249	1/2	1	7/8	1 7/8*	0.40	0.30
41BTB15	41TL15-1008	15	1008	B	2.650	2.405	1/2	1	7/8	1 7/8	0.50	0.30
41BTB16	41TL16-1008	16	1008	B	2.810	2.503	1/2	1	7/8	2	0.60	0.30
41BTB17	41TL17-1210	17	1210	B	2.980	2.721	1/2	1 1/4	1	2 3/8*	0.70	0.60
41BTB18	41TL18-1210	18	1210	B	3.140	2.879	1/2	1 1/4	1	2 3/8	0.90	0.60
41BTB19	41TL19-1210	19	1210	B	3.300	3.038	1/2	1 1/4	1	2 1/2	1.10	0.60
41BTB20	41TL20-1610	20	1610	B	3.460	3.196	1/2	1 5/8	1	2 7/8*	1.10	0.90
41BTB21	41TL21-1610	21	1610	B	3.620	3.355	1/2	1 5/8	1	3*	1.20	0.90
41BTB22	41TL22-1610	22	1610	B	3.780	3.513	1/2	1 5/8	1	3	1.30	0.90
41BTB23	41TL23-1610	23	1610	B	3.940	3.672	1/2	1 5/8	1	3	1.40	0.90
41BTB24	41TL24-1610	24	1610	B	4.100	3.831	1/2	1 5/8	1	3 1/4	1.40	0.90
41BTB25	41TL25-1610	25	1610	B	4.260	3.989	1/2	1 5/8	1	3 1/4	1.50	0.90
41BTB26	41TL26-1610	26	1610	B	4.420	4.148	1/2	1 5/8	1	3 1/4	1.50	0.90
41BTB28	41TL28-1610	28	1610	B	4.740	4.466	1/2	1 5/8	1	3 1/4	1.70	0.90
41BTB30	41TL30-1610	30	1610	B	5.060	4.783	1/2	1 5/8	1	3 1/4	1.80	0.90
41BTB32	41TL32-1610	32	1610	B	5.380	5.101	1/2	1 5/8	1	3 1/4	1.90	0.90
41BTB35	41TL35-1610	35	1610	B	5.860	5.578	1/2	1 5/8	1	3 1/4	2.30	0.90
41BTB36	41TL36-1610	36	1610	B	6.020	5.737	1/2	1 5/8	1	3 1/4	2.40	0.90
41BTB40	41TL40-1610	40	1610	B	6.650	6.373	1/2	1 5/8	1	3 1/4	2.70	0.90
41BTB45	41TL45-1610	45	1610	B	7.450	7.168	1/2	1 5/8	1	3 1/4	3.50	0.90
41BTB48	41TL48-1610	48	1610	B	7.930	7.645	1/2	1 5/8	1	3 1/4	4.10	0.90
41BTB54	41TL54-1610	54	1610	B	8.890	8.599	1/2	1 5/8	1	3 1/4	4.90	0.90
41BTB60	41TL60-1610	60	1610	B	9.840	9.554	1/2	1 5/8	1	3 1/4	5.70	0.90
41BTB70	41TL70-1610	70	1610	B	11.430	11.145	1/2	1 5/8	1	3 1/4	7.40	0.90
41BTB72	41TL72-1610	72	1610	B	11.750	11.463	1/2	1 5/8	1	3 1/4	8.20	0.90
41BTB80	41TL80-1610	80	1610	B	13.030	12.736	1/2	1 5/8	1	3 1/4	9.60	0.90
41BTB96	41TL96-1610	96	1610	B	15.570	15.281	1/2	1 5/8	1	3 1/4	13.10	0.90

*Has recessed groove in hub for chain clearance.

SPROCKETS FOR No.41 PITCH (1/2" ANSI) CHAIN

STEEL

1/2" PITCH



[SINGLE TYPE BS]

TYPE - BS

SPROCKETS FOR No.41 PITCH (1/2" ANSI) CHAIN																	
PART NUMBER	NO. OF TEETH	TYPE	DIAMETERS		LENGTH THRU	STOCK FINISHED BORES INCLUDES KEYWAY AND SETSCREW											WEIGHT LBS.
			O.D.	P.D.													
41BS9	9	BS	1.670	1.462	7/8	1/2*	5/8										0.20
41BS10	10	BS	1.840	1.618	7/8	1/2*	5/8										0.25
41BS11	11	BS	2.000	1.775	7/8	1/2*	5/8	3/4									0.32
41BS12	12	BS	2.170	1.932	7/8	1/2*	5/8	3/4	7/8								0.33
41BS13	13	BS	2.330	2.089	7/8	1/2*	5/8	3/4	7/8	1							0.43
41BS14	14	BS	2.490	2.249	7/8	1/2*	5/8	3/4	7/8	1							0.48
41BS15	15	BS	2.650	2.405	7/8	1/2*	5/8	3/4		1							0.59
41BS16	16	BS	2.810	2.503	7/8		5/8	3/4		1							0.72
41BS17	17	BS	2.980	2.721	1		5/8	3/4		1							1.00
41BS18	18	BS	3.140	2.879	1		5/8	3/4		1							1.10
41BS19	19	BS	3.300	3.038	1		5/8	3/4		1							1.21
41BS20	20	BS	3.460	3.196	1		5/8	3/4		1							1.39
41BS21	21	BS	3.620	3.355	1		5/8	3/4		1							1.77
41BS22	22	BS	3.780	3.513	1		5/8	3/4		1							1.92
41BS23	23	BS	3.940	3.672	1		5/8	3/4		1							2.18
41BS24	24	BS	4.100	3.831	1		5/8	3/4		1							2.24
41BS25	25	BS	4.260	3.989	1		5/8	3/4		1							2.42
41BS26	26	BS	4.420	4.148	1		5/8	3/4		1							2.46
41BS27	27	BS	4.580	4.306	1		5/8	3/4		1							2.52
41BS28	28	BS	4.740	4.466	1		5/8	3/4		1							2.60
41BS30	30	BS	5.060	4.783	1		5/8	3/4		1							2.76
41BS32	32	BS	5.380	5.105	1		5/8	3/4		1							2.92
41BS35	35	BS	5.860	5.578	1		5/8	3/4		1							3.08
41BS36	36	BS	6.020	5.737	1		5/8	3/4		1							3.28
41BS40	40	BS	6.650	6.373	1 1/16			3/4		1	1 1/8	1 3/16	1 1/4	1 3/8	1 7/16	1 1/2	3.82
41BS42	42	BS	6.970	6.691	1 1/16			3/4		1	1 1/8	1 3/16	1 1/4	1 3/8	1 7/16	1 1/2	3.68
41BS45	45	BS	7.450	7.168	1 1/16			3/4		1	1 1/8	1 3/16	1 1/4	1 3/8	1 7/16	1 1/2	3.94
41BS48	48	BS	7.930	7.645	1 1/16			3/4		1	1 1/8	1 3/16	1 1/4	1 3/8	1 7/16	1 1/2	4.68
41BS54	54	BS	8.890	8.599	1 1/16			3/4		1	1 1/8	1 3/16	1 1/4	1 3/8	1 7/16	1 1/2	5.44
41BS60	60	BS	9.840	9.554	1 1/16			3/4		1	1 1/8	1 3/16	1 1/4	1 3/8	1 7/16	1 1/2	6.54
41BS70	70	BS	11.430	11.145	1 3/16			3/4		1	1 1/8	1 3/16	1 1/4	1 3/8	1 7/16	1 1/2	9.28
41BS72	72	BS	11.750	11.463	1 3/16			3/4		1	1 1/8	1 3/16	1 1/4	1 3/8	1 7/16	1 1/2	9.38
41BS80	80	BS	13.030	12.736	1 3/16			3/4		1	1 1/8	1 3/16	1 1/4	1 3/8	1 7/16	1 1/2	11.28
41BS84	84	BS	13.660	13.372	1 3/16			3/4		1	1 1/8	1 3/16	1 1/4	1 3/8	1 7/16	1 1/2	11.94
41BS96	96	BS	15.570	15.281	1 3/16					1	1 1/8	1 3/16	1 1/4	1 3/8	1 7/16	1 1/2	14.51
41BS112	112	BS	18.120	17.827	1 3/16					1	1 1/8	1 3/16	1 1/4	1 3/8	1 7/16	1 1/2	18.81

* Indicates no keyway.
 (2) 1/4" Setscrews only in 1/2" bore.
 Hub diameters vary to suit different bore sizes.

KEYWAY IS ON CENTER LINE OF TOOTH.