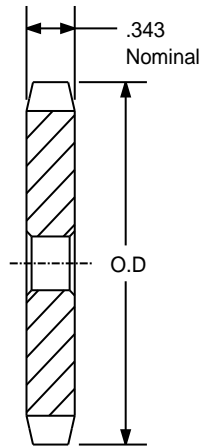


SPROCKETS FOR No.50 PITCH (5/8" ANSI) CHAIN

STEEL

5/8" PITCH



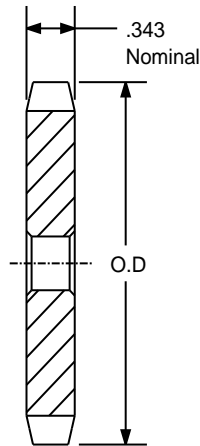
TYPE - A

SPROCKETS FOR No.50 PITCH (5/8" ANSI) CHAIN						
PART NUMBER	NO. OF TEETH	TYPE	DIAMETERS		STOCK BORE	WEIGHT
			O.D.	P.D.		
50A12	12	A	2.710	2.415	5/8	0.34
50A13	13	A	2.910	2.612	5/8	0.42
50A14	14	A	3.110	2.809	5/8	0.50
50A15	15	A	3.320	3.006	5/8	0.54
50A16	16	A	3.520	3.204	5/8	0.68
50A17	17	A	3.720	3.401	5/8	0.76
50A18	18	A	3.920	3.599	5/8	0.86
50A19	19	A	4.120	3.797	5/8	0.94
50A20	20	A	4.320	3.995	3/4	1.06
50A21	21	A	4.520	4.194	3/4	1.12
50A22	22	A	4.720	4.392	3/4	1.30
50A23	23	A	4.920	4.590	3/4	1.44
50A24	24	A	5.120	4.788	23/32	1.50
50A25	25	A	5.320	4.987	23/32	1.62
50A26	26	A	5.520	5.185	23/32	1.72
50A27	27	A	5.720	5.384	23/32	1.96
50A28	28	A	5.920	5.582	23/32	2.04
50A29	29	A	6.120	5.781	23/32	2.36
50A30	30	A	6.320	5.979	23/32	2.54
50A31	31	A	6.520	6.177	23/32	2.80
50A32	32	A	6.720	6.376	23/32	2.72
50A33	33	A	6.920	6.575	23/32	3.14
50A34	34	A	7.120	6.774	23/32	3.20
50A35	35	A	7.320	6.972	23/32	3.34
50A36	36	A	7.520	7.171	23/32	3.82
50A37	37	A	7.720	7.369	23/32	3.98
50A38	38	A	7.920	7.569	23/32	4.14
50A39	39	A	8.120	7.767	23/32	4.42
50A40	40	A	8.320	7.966	23/32	4.46

SPROCKETS FOR No.50 PITCH (5/8" ANSI) CHAIN

STEEL

5/8" PITCH



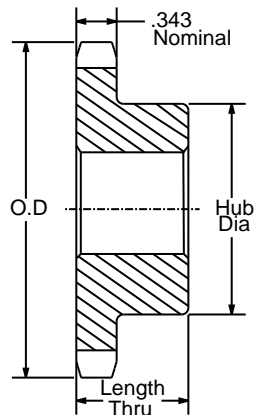
TYPE - A

SPROCKETS FOR No.50 PITCH (5/8" ANSI) CHAIN						
PART NUMBER	NO. OF TEETH	TYPE	DIAMETERS		STOCK BORE	WEIGHT
			O.D.	P.D.		
50A41	41	A	8.520	8.165	23/32	4.86
50A42	42	A	8.720	8.363	23/32	4.98
50A43	43	A	8.910	8.562	23/32	5.24
50A44	44	A	9.110	8.760	23/32	5.42
50A45	45	A	9.310	8.960	23/32	5.92
50A46	46	A	9.510	9.158	15/16	6.42
50A47	47	A	9.710	9.357	15/16	6.50
50A48	48	A	9.910	9.556	15/16	6.58
50A49	49	A	10.110	9.755	15/16	7.06
50A50	50	A	10.310	9.954	15/16	7.10
50A51	51	A	10.510	10.152	15/16	7.32
50A52	52	A	10.710	10.351	15/16	7.98
50A53	53	A	10.910	10.550	15/16	8.08
50A54	54	A	11.110	10.749	15/16	8.30
50A55	55	A	11.310	10.947	15/16	8.56
50A56	56	A	11.500	11.146	15/16	8.90
50A57	57	A	11.700	11.345	15/16	9.38
50A58	58	A	11.900	11.544	15/16	10.30
50A59	59	A	12.100	11.743	15/16	10.50
50A60	60	A	12.300	11.942	15/16	10.80
50A70	70	A	14.290	13.931	15/16	14.00
50A72	72	A	14.690	14.329	15/16	15.24
50A76	76	A	15.486	15.124	15/16	20.08
50A80	80	A	16.280	15.920	15/16	21.00
50A84	84	A	17.080	16.715	15/16	22.08
50A95	95	A	19.270	18.903	15/16	27.00
50A96	96	A	19.470	19.102	15/16	27.40
50A112	112	A	22.650	22.285	15/16	37.70

SPROCKETS FOR No.50 PITCH (5/8" ANSI) CHAIN

STEEL

5/8" PITCH



TYPE - B

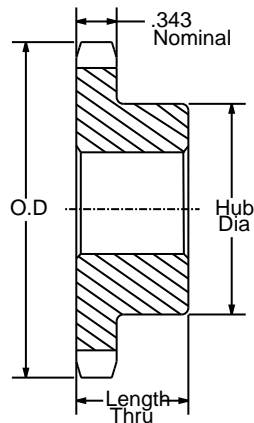
SPROCKETS FOR No.50 PITCH (5/8" ANSI) CHAIN									
PART NUMBER	NO. OF TEETH	TYPE	DIAMETERS		BORE RANGE		DIMENSIONS		WEIGHT LBS.
			O.D.	P.D.	MIN	MAX	HUB DIAMETER	LENGTH THRU	
50B8	8	B	1.880	1.633	5/8	5/8	1 1/8*	1	0.25
50B9	9	B	2.090	1.827	5/8	3/4	1 3/8*	1	0.36
50B10	10	B	2.300	2.023	5/8	7/8	1 9/16*	1	0.48
50B11	11	B	2.500	2.219	5/8	1	1 3/4*	1	0.64
50B12	12	B	2.710	2.415	5/8	1 1/4	1 63/64*	1	0.83
50B13	13	B	2.910	2.612	5/8	1 5/16	1 7/8	1	0.88
50B14	14	B	3.110	2.809	5/8	1 7/16	2 1/8	1	1.13
50B15	15	B	3.320	3.006	5/8	1 1/2	2 3/8	1	1.34
50B16	16	B	3.520	3.204	5/8	1 3/4	2 1/2	1	1.51
50B17	17	B	3.720	3.401	5/8	1 7/8	2 11/16	1	1.74
50B18	18	B	3.920	3.599	5/8	1 7/8	2 7/8	1	2.00
50B19	19	B	4.120	3.797	5/8	2	3	1	2.22
50B20	20	B	4.320	3.995	3/4	2	3	1	2.28
50B21	21	B	4.520	4.194	3/4	2	3	1	2.40
50B22	22	B	4.720	4.392	3/4	2	3	1	2.56
50B23	23	B	4.920	4.590	3/4	2	3	1	2.66
50B24	24	B	5.120	4.788	3/4	2	3	1 1/4	3.30
50B25	25	B	5.320	4.987	3/4	2	3	1 1/4	3.40
50B26	26	B	5.520	5.185	3/4	2	3	1 1/4	3.44
50B27	27	B	5.720	5.384	3/4	2	3	1 1/4	3.74
50B28	28	B	5.920	5.582	3/4	2	3	1 1/4	3.80
50B29	29	B	6.120	5.781	3/4	2	3	1 1/4	4.06
50B30	30	B	6.320	5.979	3/4	2 1/4	3 1/4	1 1/4	4.56
50B31	31	B	6.520	6.177	3/4	2 1/4	3 1/4	1 1/4	4.74
50B32	32	B	6.720	6.376	3/4	2 1/4	3 1/4	1 1/4	4.96
50B33	33	B	6.920	6.575	3/4	2 1/4	3 1/4	1 1/4	5.20
50B34	34	B	7.120	6.774	3/4	2 1/4	3 1/4	1 1/4	5.14
50B35	35	B	7.320	6.972	3/4	2 1/4	3 1/4	1 1/4	5.44
50B36	36	B	7.520	7.171	3/4	2 1/4	3 1/4	1 1/4	5.64
50B37	37	B	7.720	7.369	3/4	2 1/4	3 1/4	1 1/4	5.90
50B38	38	B	7.920	7.569	3/4	2 1/4	3 1/4	1 1/4	6.08
50B39	39	B	8.120	7.767	3/4	2 1/4	3 1/4	1 1/4	6.30
50B40	40	B	8.320	7.966	3/4	2 1/4	3 1/4	1 1/4	6.50

*Has recessed groove in hub for chain clearance.

SPROCKETS FOR No.50 PITCH (5/8" ANSI) CHAIN

STEEL

5/8" PITCH



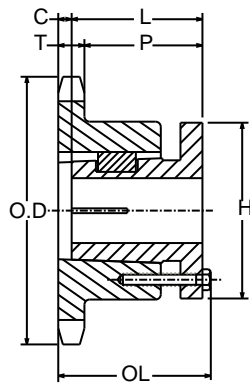
TYPE - B

SPROCKETS FOR No.50 PITCH (5/8" ANSI) CHAIN									
PART NUMBER	NO. OF TEETH	TYPE	DIAMETERS		BORE RANGE		DIMENSIONS		WEIGHT LBS.
			O.D.	P.D.	MIN	MAX	HUB DIAMETER	LENGTH THRU	
50B41	41	B	8.520	8.165	3/4	2 1/4	3 1/4	1 1/4	6.64
50B42	42	B	8.720	8.363	3/4	2 1/4	3 1/4	1 1/4	6.96
50B43	43	B	8.910	8.562	3/4	2 1/4	3 1/4	1 1/4	7.06
50B44	44	B	9.110	8.760	3/4	2 1/4	3 1/4	1 1/4	7.58
50B45	45	B	9.310	8.960	3/4	2 1/2	3 3/4	1 1/4	8.58
50B46	46	B	9.510	9.158	3/4	2 1/2	3 3/4	1 1/4	8.22
50B47	47	B	9.710	9.357	3/4	2 1/2	3 3/4	1 1/4	8.48
50B48	48	B	9.910	9.556	1	2 1/2	3 3/4	1 1/4	9.28
50B49	49	B	10.110	9.755	1	2 1/2	3 3/4	1 1/4	9.22
50B50	50	B	10.310	9.954	1	2 1/2	3 3/4	1 1/4	9.88
50B51	51	B	10.510	10.152	1	2 1/2	3 3/4	1 1/4	9.70
50B52	52	B	10.710	10.351	1	2 1/2	3 3/4	1 1/4	10.24
50B53	53	B	10.910	10.550	1	2 1/2	3 3/4	1 1/4	10.48
50B54	54	B	11.110	10.749	1	2 1/2	3 3/4	1 1/4	11.00
50B55	55	B	11.310	10.947	1	2 1/2	3 3/4	1 1/4	10.93
50B56	56	B	11.500	11.146	1	2 1/2	3 3/4	1 1/4	11.50
50B57	57	B	11.700	11.345	1	2 1/2	3 3/4	1 1/4	12.00
50B58	58	B	11.900	11.544	1	2 1/2	3 3/4	1 1/4	11.82
50B59	59	B	12.100	11.743	1	2 1/2	3 3/4	1 1/4	12.32
50B60	60	B	12.300	11.942	1	2 1/2	3 3/4	1 1/4	13.00
50B70	70	B	14.290	13.931	1	2 1/2	3 3/4	1 3/4	18.16
50B72	72	B	14.690	14.329	1	2 1/2	3 3/4	1 3/4	19.48
50B76	76	B	15.486	15.124	1	2 1/2	3 3/4	1 3/4	21.00
50B80	80	B	16.280	15.920	1	2 3/4	4 1/4	1 3/4	24.74
50B84	84	B	17.080	16.715	1	2 3/4	4 1/4	1 3/4	25.50
50B95	95	B	19.270	18.903	1	2 3/4	4 1/4	1 3/4	32.00
50B96	96	B	19.470	19.102	1	2 3/4	4 1/4	1 3/4	32.92
50B112	112	B	22.650	22.235	1	2 3/4	4 1/4	1 3/4	42.00

SPROCKETS FOR No.50 PITCH (5/8" ANSI) CHAIN

STEEL

5/8" PITCH



TYPE - 4



[SINGLE SPLIT BUSH]

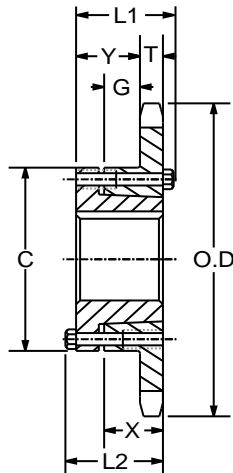
SPROCKETS FOR No.50 PITCH (5/8" ANSI) CHAIN

OLD PART NUMBER	NEW PART NUMBER	NO. OF TEETH	BUSHING	TYPE	DIAMETERS		BORE RANGE		DIMENSIONS						WEIGHT LBS.
					O.D.	P.D.	MIN	MAX	T(NOM)	O.L.	L	P	C	H	
50P20	50ST20-P1	20	P1	4	4.320	3.995	1/2	1 3/4	0.343	2 3/16	1 15/16	1 19/32	0.000	3	2.00
50P21	50ST21-P1	21	P1	4	4.520	4.194	1/2	1 3/4	0.343	2 3/16	1 15/16	1 19/32	0.000	3	2.10
50P22	50ST22-P1	22	P1	4	4.700	4.392	1/2	1 3/4	0.343	2 3/16	1 15/16	1 19/32	0.000	3	2.30
50P23	50ST23-P1	23	P1	4	4.920	3.599	1/2	1 3/4	0.343	2 3/16	1 15/16	1 19/32	0.000	3	2.40
50Q23	50ST23-Q1	23	Q1	4	4.920	3.599	3/4	2 11/16	0.343	2 25/32	2 1/2	2 5/32	0.000	4 1/8	3.40
50P24	50ST24-P1	24	P1	4	5.120	4.788	1/2	1 3/4	0.343	2 3/16	1 15/16	1 19/32	0.000	3	2.50
50P24	50ST24-Q1	24	Q1	4	5.120	4.788	3/4	2 11/16	0.343	2 25/32	2 1/2	2 5/32	0.000	4 1/8	3.40
50P25	50ST25-P1	25	P1	4	5.320	4.987	1/2	1 3/4	0.343	2 3/16	1 15/16	1 19/32	0.000	3	2.60
50Q25	50ST25-Q1	25	Q1	4	5.320	4.987	3/4	2 11/16	0.343	2 25/32	2 1/2	2 5/32	0.000	4 1/8	3.70
50P26	50ST26-P1	26	P1	4	5.520	5.185	1/2	1 3/4	0.343	2 3/16	1 15/16	1 19/32	0.000	3	2.90
50Q26	50ST26-Q1	26	Q1	4	5.520	5.185	3/4	2 11/16	0.343	2 25/32	2 1/2	2 5/32	0.000	4 1/8	3.80
50P27	50ST27-P1	27	P1	4	5.720	5.384	1/2	1 3/4	0.343	2 3/16	1 15/16	1 19/32	0.000	3	3.00
50Q27	50ST27-Q1	27	Q1	4	5.720	5.384	3/4	2 11/16	0.343	2 25/32	2 1/2	2 5/32	0.000	4 1/8	3.90
50P28	50ST28-P1	28	P1	4	5.920	5.582	1/2	1 3/4	0.343	2 3/16	1 15/16	1 19/32	0.000	3	3.20
50Q28	50ST28-Q1	28	Q1	4	5.920	5.582	3/4	2 11/16	0.343	2 25/32	2 1/2	2 5/32	0.000	4 1/8	4.00
50P29	50ST29-P1	29	P1	4	6.120	5.781	1/2	1 3/4	0.343	2 3/16	1 15/16	1 19/32	0.000	3	3.30
50P30	50ST30-P1	30	P1	4	6.320	5.979	1/2	1 3/4	0.343	2 3/16	1 15/16	1 19/32	0.000	3	3.50
50Q30	50ST30-Q1	30	Q1	4	6.320	5.979	3/4	2 11/16	0.343	2 25/32	2 1/2	2 5/32	0.000	4 1/8	5.60
50P31	50ST31-P1	31	P1	4	6.520	6.178	1/2	1 3/4	0.343	2 3/16	1 15/16	1 19/32	0.000	3	3.60
50P32	50ST32-P1	32	P1	4	6.720	6.376	1/2	1 3/4	0.343	2 3/16	1 15/16	1 19/32	0.000	3	3.90
50Q32	50ST32-Q1	32	Q1	4	6.720	6.376	3/4	2 11/16	0.343	2 25/32	2 1/2	2 5/32	0.000	4 1/8	6.10
50P33	50ST33-P1	33	P1	4	6.920	6.575	1/2	1 3/4	0.343	2 3/16	1 15/16	1 19/32	0.000	3	4.10
50P34	50ST34-P1	34	P1	4	7.120	6.774	1/2	1 3/4	0.343	2 3/16	1 15/16	1 19/32	0.000	3	4.30
50P35	50ST35-P1	35	P1	4	7.320	6.972	1/2	1 3/4	0.343	2 3/16	1 15/16	1 19/32	0.000	3	4.30
50Q35	50ST35-Q1	35	Q1	4	7.320	6.972	3/4	2 11/16	0.343	2 25/32	2 1/2	2 5/32	0.000	4 1/8	6.80
50P36	50ST36-P1	36	P1	4	7.520	7.171	1/2	1 3/4	0.343	2 3/16	1 15/16	1 19/32	0.000	3	4.80
50Q36	50ST36-Q1	36	Q1	4	7.520	7.171	3/4	2 11/16	0.343	2 25/32	2 1/2	2 5/32	0.000	4 1/8	6.80
50Q37	50ST37-Q1	37	Q1	4	7.720	7.370	3/4	2 11/16	0.343	2 25/32	2 1/2	2 5/32	0.000	4 1/8	7.00
50Q38	50ST38-Q1	38	Q1	4	7.920	7.569	3/4	2 11/16	0.343	2 25/32	2 1/2	2 5/32	0.000	4 1/8	7.40
50Q39	50ST39-Q1	39	Q1	4	8.120	7.767	3/4	2 11/16	0.343	2 25/32	2 1/2	2 5/32	0.000	4 1/8	7.60
50Q40	50ST40-Q1	40	Q1	4	8.320	7.966	3/4	2 11/16	0.343	2 25/32	2 1/2	2 5/32	0.000	4 1/8	8.00
50Q41	50ST41-Q1	41	Q1	4	8.520	8.165	3/4	2 11/16	0.343	2 25/32	2 1/2	2 5/32	0.000	4 1/8	8.20
50Q42	50ST42-Q1	42	Q1	4	8.720	8.363	3/4	2 11/16	0.343	2 25/32	2 1/2	2 5/32	0.000	4 1/8	8.30
50Q44	50ST44-Q1	44	Q1	4	9.110	8.761	3/4	2 11/16	0.343	2 25/32	2 1/2	2 5/32	0.000	4 1/8	8.60
50Q45	50ST45-Q1	45	Q1	4	9.310	8.960	3/4	2 11/16	0.343	2 25/32	2 1/2	2 5/32	0.000	4 1/8	9.00
50Q47	50ST47-Q1	47	Q1	4	9.710	9.357	3/4	2 11/16	0.343	2 25/32	2 1/2	2 5/32	0.000	4 1/8	9.30
50Q48	50ST48-Q1	48	Q1	4	9.910	9.556	3/4	2 11/16	0.343	2 25/32	2 1/2	2 5/32	0.000	4 1/8	9.60
50Q50	50ST50-Q1	50	Q1	4	10.310	9.954	3/4	2 11/16	0.343	2 25/32	2 1/2	2 5/32	0.000	4 1/8	9.80
50Q54	50ST54-Q1	54	Q1	4	11.110	10.749	3/4	2 11/16	0.343	2 25/32	2 1/2	2 5/32	0.000	4 1/8	11.30
50Q56	50V56-Q1	56	Q1	4	11.500	11.147	3/4	2 11/16	0.343	2 25/32	2 1/2	2 5/32	0.000	4 1/8	12.30
50Q60	50ST60-Q1	60	Q1	4	12.300	11.942	3/4	2 11/16	0.343	2 25/32	2 1/2	2 5/32	0.000	4 1/8	13.30
50Q70	50ST70-Q1	70	Q1	4	14.290	13.931	3/4	2 11/16	0.343	2 25/32	2 1/2	2 5/32	0.000	4 1/8	16.90
50Q72	50V72-Q1	72	Q1	4	14.690	14.329	3/4	2 11/16	0.343	2 25/32	2 1/2	2 5/32	0.000	4 1/8	18.10
50Q80	50ST80-Q1	80	Q1	4	16.280	15.920	3/4	2 11/16	0.343	2 25/32	2 1/2	2 5/32	0.000	4 1/8	21.10
50Q84	50ST84-Q1	84	Q1	4	17.080	16.715	3/4	2 11/16	0.343	2 25/32	2 1/2	2 5/32	0.000	4 1/8	24.30
50Q96	50ST96-Q1	96	Q1	4	19.470	19.102	3/4	2 11/16	0.343	2 25/32	2 1/2	2 5/32	0.000	4 1/8	29.80
50Q112	50ST112	112	Q1	4	22.650	22.285	3/4	2 11/16	0.343	2 25/32	2 1/2	2 5/32	0.000	4 1/8	39.30

SPROCKETS FOR No.50 PITCH (5/8" ANSI) CHAIN

STEEL

5/8" PITCH



TYPE - QD-B



[SINGLE QD BUSH]

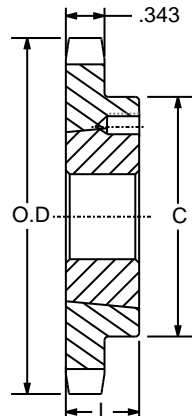
SPROCKETS FOR No.50 PITCH (5/8" ANSI) CHAIN

OLD PART NUMBER	NEW PART NUMBER	NO. OF TEETH	BUSHING	TYPE	DIAMETERS		BORE RANGE		DIMENSIONS							WEIGHT	
					O.D.	P.D.	MIN	MAX	L1	L2	C	Y	G	X	T(NOM)	WITH HUB	RIM ONLY
50JA12	50QD12-JA	12	JA	QD-B	2.710	2.415	1/2	1 1/4	1 1/8	1 1/8	2 1/16	21/32	9/32	5/8	0.343	1.24	0.34
50JA13	50QD13-JA	13	JA	QD-B	2.910	2.612	1/2	1 1/4	1 1/8	1 1/8	2 1/16	21/32	9/32	5/8	0.343	1.30	0.40
50JA14	50QD14-JA	14	JA	QD-B	3.110	2.809	1/2	1 1/4	1 1/8	1 1/8	2 1/16	21/32	9/32	5/8	0.343	1.45	0.52
50JA15	50QD15-JA	15	JA	QD-B	3.320	3.006	1/2	1 1/4	1 1/8	1 1/8	2 1/16	21/32	9/32	5/8	0.343	1.50	0.60
50JA16	50QD16-JA	16	JA	QD-B	3.520	3.204	1/2	1 1/4	1 1/8	1 1/8	2 1/16	21/32	9/32	5/8	0.343	1.58	0.68
50SH17	50QD17-SH	17	SH	QD-B	3.720	3.401	1/2	1 5/8	1 7/16	1 7/16	2 11/16	29/32	15/32	13/16	0.343	1.84	0.84
50SH18	50QD18-SH	18	SH	QD-B	3.920	3.599	1/2	1 5/8	1 7/16	1 7/16	2 11/16	29/32	15/32	13/16	0.343	2.04	1.04
50SH19	50QD19-SH	19	SH	QD-B	4.120	3.797	1/2	1 5/8	1 7/16	1 7/16	2 11/16	29/32	15/32	13/16	0.343	2.24	1.24
50SDS20	50QD20-SDS	20	SDS	QD-B	4.320	3.995	1/2	2	1 1/2	1 1/2	3 3/16	31/32	13/32	3/4	0.343	2.20	1.20
50SDS21	50QD21-SDS	21	SDS	QD-B	4.520	4.194	1/2	2	1 1/2	1 1/2	3 3/16	31/32	13/32	3/4	0.343	2.32	1.32
50SDS22	50QD22-SDS	22	SDS	QD-B	4.720	4.392	1/2	2	1 1/2	1 1/2	3 3/16	31/32	13/32	3/4	0.343	2.48	1.42
50SDS23	50QD23-SDS	23	SDS	QD-B	4.920	4.590	1/2	2	1 1/2	1 1/2	3 3/16	31/32	13/32	3/4	0.343	2.58	1.58
50SDS24	50QD24-SDS	24	SDS	QD-B	5.120	4.788	1/2	2	1 1/2	1 1/2	3 3/16	31/32	13/32	3/4	0.343	2.70	1.70
50SDS25	50QD25-SDS	25	SDS	QD-B	5.320	4.987	1/2	2	1 1/2	1 1/2	3 3/16	31/32	13/32	3/4	0.343	2.86	1.86
50SDS26	50QD26-SDS	26	SDS	QD-B	5.520	5.185	1/2	2	1 1/2	1 1/2	3 3/16	31/32	13/32	3/4	0.343	3.00	2.00
50SDS27	50QD27-SDS	27	SDS	QD-B	5.720	5.384	1/2	2	1 1/2	1 1/2	3 3/16	31/32	13/32	3/4	0.343	3.12	2.12
50SDS28	50QD28-SDS	28	SDS	QD-B	5.920	5.582	1/2	2	1 1/2	1 1/2	3 3/16	31/32	13/32	3/4	0.343	3.32	2.32
50SDS30	50QD30-SDS	30	SDS	QD-B	6.320	5.979	1/2	2	1 1/2	1 1/2	3 3/16	31/32	13/32	3/4	0.343	3.64	2.64
50SDS32	50QD32-SDS	32	SDS	QD-B	6.720	6.376	1/2	2	1 1/2	1 1/2	3 3/16	31/32	13/32	3/4	0.343	3.98	2.98
50SDS35	50QD35-SDS	35	SDS	QD-B	7.320	6.972	1/2	2	1 1/2	1 1/2	3 3/16	31/32	13/32	3/4	0.343	4.62	3.62
50SDS36	50QD36-SDS	36	SDS	QD-B	7.520	7.171	1/2	2	1 1/2	1 1/2	3 3/16	31/32	13/32	3/4	0.343	4.64	3.64
50SDS40	50QD40-SDS	40	SDS	QD-B	8.320	7.966	1/2	2	1 1/2	1 1/2	3 3/16	31/32	13/32	3/4	0.343	5.74	4.74
50SDS42	50QD42-SDS	42	SDS	QD-B	8.720	8.363	1/2	2	1 1/2	1 1/2	3 3/16	31/32	13/32	3/4	0.343	6.40	5.40
50SDS45	50QD45-SDS	45	SDS	QD-B	9.310	8.960	1/2	2	1 1/2	1 1/2	3 3/16	31/32	13/32	3/4	0.343	6.90	5.90
50SDS48	50QD48-SDS	48	SDS	QD-B	9.910	9.556	1/2	2	1 1/2	1 1/2	3 3/16	31/32	13/32	3/4	0.343	7.66	6.66
50SK54	50QD54-SK	54	SK	QD-B	11.110	10.749	1/2	2 5/8	2 1/8	2 1/8	3 7/8	1 17/32	29/32	1 1/4	0.343	11.68	9.68
50SK60	50QD60-SK	60	SK	QD-B	12.300	11.942	1/2	2 5/8	2 1/8	2 1/8	3 7/8	1 17/32	29/32	1 1/4	0.343	13.88	11.88
50SK70	50QD70-SK	70	SK	QD-B	14.290	13.931	1/2	2 5/8	2 1/8	2 1/8	3 7/8	1 17/32	29/32	1 1/4	0.343	17.52	15.52
50SK72	50QD72-SK	72	SK	QD-B	14.690	14.329	1/2	2 5/8	2 1/8	2 1/8	3 7/8	1 17/32	29/32	1 1/4	0.343	18.44	16.44
50SF80	50QD80-SF	80	SF	QD-B	16.280	15.920	1/2	2 15/16	2 1/4	2 1/4	4 5/8	1 21/32	29/32	1 1/4	0.343	22.90	19.90
50SF84	50QD84-SF	84	SF	QD-B	17.080	16.715	1/2	2 15/16	2 1/4	2 1/4	4 5/8	1 21/32	29/32	1 1/4	0.343	25.98	22.98
50SF96	50QD96-SF	96	SF	QD-B	19.470	19.102	1/2	2 15/16	2 1/4	2 1/4	4 5/8	1 21/32	29/32	1 1/4	0.343	32.88	29.88
50SF112	50QD112-SF	112	SF	QD-B	22.650	22.285	1/2	2 15/16	2 1/4	2 1/4	4 5/8	1 21/32	29/32	1 1/4	0.343	43.10	40.10

SPROCKETS FOR No.50 PITCH (5/8" ANSI) CHAIN

STEEL

5/8" PITCH



TYPE - B

[SINGLE TAPER BUSH]

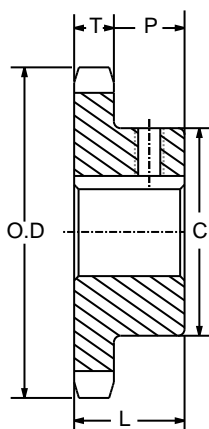
SPROCKETS FOR No.50 PITCH (5/8" ANSI) CHAIN												
OLD PART NUMBER	NEW PART NUMBER	NO. OF TEETH	BUSHING	TYPE	DIAMETERS		BORE RANGE		DIMENSIONS		WEIGHT	
					O.D.	P.D.	MIN	MAX	L	C	RIM ONLY	BUSH ONLY
50BTB12	50TL12-1008	12	1008	B	2.708	2.415	1/2	1	7/8	1 15/16*	0.50	0.30
50BTB13	50TL13-1008	13	1008	B	2.911	2.612	1/2	1	7/8	1 13/16	0.50	0.30
50BTB14	50TL14-1008	14	1008	B	3.113	2.809	1/2	1	7/8	1 15/16	0.60	0.30
50BTB15	50TL15-1210	15	1210	B	3.315	3.006	1/2	1 1/4	1	2 15/32*	0.70	0.60
50BTB16	50TL16-1610	16	1610	B	3.517	3.204	1/2	1 5/8	1	2 25/32*	0.70	0.90
50BTB17	50TL17-1610	17	1610	B	3.719	3.401	1/2	1 5/8	1	2 25/32*	0.80	0.90
50BTB18	50TL18-1610	18	1610	B	3.920	3.599	1/2	1 5/8	1	2 25/32	0.90	0.90
50BTB19	50TL19-1610	19	1610	B	4.120	3.797	1/2	1 5/8	1	3	1.30	0.90
50BTB20	50TL20-1610	20	1610	B	4.321	3.995	1/2	1 5/8	1	3 1/4	1.60	0.90
50BTB21	50TL21-1610	21	1610	B	4.522	4.193	1/2	1 5/8	1	3	1.50	0.90
50BTB22	50TL22-1610	22	1610	B	4.722	4.392	1/2	1 5/8	1	3	1.60	0.90
50BTB23	50TL23-2012	23	2012	B	4.922	4.590	1/2	2	1 1/4	3 9/16	2.00	1.70
50BTB24	50TL24-2012	24	2012	B	5.122	4.788	1/2	2	1 1/4	3 9/16	2.20	1.70
50BTB25	50TL25-2012	25	2012	B	5.322	4.987	1/2	2	1 1/4	3 9/16	2.40	1.70
50BTB26	50TL26-2012	26	2012	B	5.522	5.185	1/2	2	1 1/4	3 9/16	2.50	1.70
50BTB27	50TL27-2012	27	2012	B	5.723	5.384	1/2	2	1 1/4	3 9/16	2.60	1.70
50BTB28	50TL28-2012	28	2012	B	5.922	5.582	1/2	2	1 1/4	3 9/16	2.80	1.70
50BTB30	50TL30-2012	30	2012	B	6.321	5.979	1/2	2	1 1/4	3 9/16	3.20	1.70
50BTB32	50TL32-2012	32	2012	B	6.721	6.376	1/2	2	1 1/4	3 9/16	3.60	1.70
50BTB35	50TL35-2012	35	2012	B	7.319	6.972	1/2	2	1 1/4	3 9/16	4.20	1.70
50BTB36	50TL36-2012	36	2012	B	7.519	7.171	1/2	2	1 1/4	3 9/16	4.30	1.70
50BTB40	50TL40-2012	40	2012	B	8.316	7.966	1/2	2	1 1/4	3 9/16	5.20	1.70
50BTB42	50TL42-2012	42	2012	B	8.715	8.363	1/2	2	1 1/4	3 9/16	5.90	1.70
50BTB45	50TL45-2012	45	2012	B	9.313	8.960	1/2	2	1 1/4	3 9/16	6.50	1.70
50BTB48	50TL48-2012	48	2012	B	9.911	9.556	1/2	2	1 1/4	3 9/16	7.30	1.70
50BTB54	50TL54-2012	54	2012	B	11.106	10.749	1/2	2	1 1/4	3 9/16	9.00	1.70
50BTB60	50TL60-2012	60	2012	B	12.301	11.942	1/2	2	1 1/4	3 9/16	10.80	1.70
50BTB70	50TL70-2517	70	2517	B	14.292	13.931	1/2	2 1/2	1 3/4	4 1/4	14.00	3.50
50BTB72	50TL72-2517	72	2517	B	14.690	14.329	1/2	2 1/2	1 3/4	4 1/4	15.50	3.50
50BTB80	50TL80-2517	80	2517	B	16.282	15.920	1/2	2 1/2	1 3/4	4 1/4	19.50	3.50
50BTB84	50TL84-2517	84	2517	B	17.079	16.715	1/2	2 1/2	1 3/4	4 1/4	22.50	3.50
50BTB96	50TL96-2517	96	2517	B	19.466	19.102	1/2	2 1/2	1 3/4	4 1/4	29.00	3.50
50BTB112	50TL112-2517	112	2517	B	22.652	22.285	1/2	2 1/2	1 3/4	4 1/4	38.70	3.50

*Has recessed groove in hub for chain clearance.

SPROCKETS FOR No.50 PITCH (5/8" ANSI) CHAIN

STEEL

5/8" PITCH



[SINGLE TYPE BS]

TYPE - BS

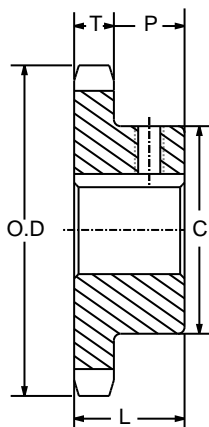
SPROCKETS FOR No.50 PITCH (5/8" ANSI) CHAIN											
PART NUMBER	NO. OF TEETH	TYPE	DIAMETERS		BORE RANGE		DIMENSIONS				WEIGHT LBS.
			O.D.	P.D.	MIN	MAX	T	L	P	C	
50BS8	8	BS	1.880	1.633	1/2	5/8	0.343	1	21/32	^T 1 3/16	0.30
50BS9	9	BS	2.090	1.827	5/8	3/4	0.343	1	21/32	^T 1 3/8	0.40
50BS10	10	BS	2.300	2.023	5/8	7/8	0.343	1	21/32	^T 1 9/16	0.50
50BS11	11	BS	2.500	2.219	5/8	1	0.343	1	21/32	^T 1 3/4	0.60
50BS12	12	BS	2.700	2.415	5/8	1 1/4	0.343	1	21/32	^T 1 63/64	0.80
50BS13	13	BS	2.910	2.612	5/8	1 5/16	0.343	1	21/32	^T 2	0.80
50BS14	14	BS	3.110	2.809	5/8	1 7/16	0.343	1	21/32	2 1/8	1.00
50BS15	15	BS	3.320	3.006	5/8	1 1/2	0.343	1	21/32	2 3/8	1.30
50BS16	16	BS	3.520	3.204	5/8	1 3/4	0.343	1	21/32	2 9/16	1.60
50BS17	17	BS	3.720	3.401	5/8	1 7/8	0.343	1	21/32	2 11/16	1.80
50BS18	18	BS	3.920	3.599	5/8	1 7/8	0.343	1	21/32	2 7/8	2.00
50BS19	19	BS	4.120	3.797	5/8	2	0.343	1	21/32	3	2.30
50BS20	20	BS	4.320	3.995	3/4	2	0.343	1	21/32	3	2.60
50BS21	21	BS	4.520	4.194	3/4	2 1/4	0.343	1	21/32	3 3/8	2.90
50BS22	22	BS	4.720	4.392	3/4	2 1/4	0.343	1	21/32	3 1/4	3.00
50BS23	23	BS	4.920	4.590	3/4	2 1/4	0.343	1	21/32	3 1/4	3.30
50BS24	24	BS	5.120	4.788	3/4	2 1/4	0.343	1 1/16	23/32	3 1/4	3.50
50BS25	25	BS	5.320	4.987	3/4	2 1/4	0.343	1 1/16	23/32	3 1/4	3.60
50BS26	26	BS	5.520	5.185	3/4	2 1/4	0.343	1 1/16	23/32	3 1/4	3.70
50BS27	27	BS	5.720	5.384	3/4	2 1/4	0.343	1 1/16	23/32	3 1/4	3.80
50BS28	28	BS	5.920	5.582	3/4	2 1/4	0.343	1 1/16	23/32	3 1/4	4.00
50BS29	29	BS	6.120	5.781	3/4	2 1/4	0.343	1 1/16	23/32	3 1/4	4.20
50BS30	30	BS	6.320	5.979	3/4	2 1/4	0.343	1 1/16	23/32	3 1/4	4.40
50BS31	31	BS	6.520	6.178	3/4	2 1/4	0.343	1 1/16	23/32	3 1/4	4.60
50BS32	32	BS	6.720	6.376	3/4	2 1/4	0.343	1 1/16	23/32	3 1/4	4.70
50BS33	33	BS	6.920	6.575	3/4	2 1/4	0.343	1 1/16	23/32	3 1/4	4.90
50BS34	34	BS	7.120	6.774	3/4	2 1/4	0.343	1 1/16	23/32	3 1/4	5.10
50BS35	35	BS	7.320	6.972	3/4	2 3/8	0.343	1 1/16	23/32	3 1/2	5.50
50BS36	36	BS	7.520	7.171	3/4	2 3/8	0.343	1 1/16	23/32	3 1/2	5.70
50BS38	38	BS	7.920	7.569	3/4	2 3/8	0.343	1 1/16	23/32	3 1/2	6.00
50BS39	39	BS	8.120	7.767	3/4	2 3/8	0.343	1 1/16	23/32	3 1/2	6.40
50BS40	40	BS	8.320	7.966	3/4	2 3/8	0.343	1 1/16	23/32	3 1/2	6.70

^THub is recessed for chain clearance.

SPROCKETS FOR No.50 PITCH (5/8" ANSI) CHAIN

STEEL

5/8" PITCH



[SINGLE TYPE BS]

TYPE - BS

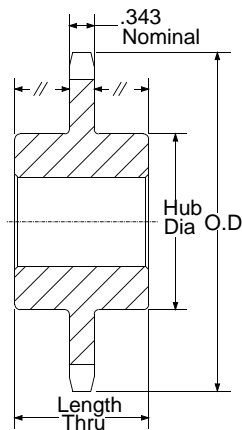
SPROCKETS FOR No.50 PITCH (5/8" ANSI) CHAIN												
PART NUMBER	NO. OF TEETH	TYPE	DIAMETERS		BORE RANGE		DIMENSIONS				WEIGHT LBS.	
			O.D.	P.D.	MIN	MAX	T	L	P	C		
50BS42	42	BS	8.720	8.363	3/4	2 3/8	0.343	1 1/16	23/32	3 1/2	7.20	
50BS44	44	BS	9.110	8.761	3/4	2 3/8	0.343	1 1/16	23/32	3 1/2	7.70	
50BS45	45	BS	9.310	8.960	3/4	2 1/2	0.343	1 1/16	23/32	3 3/4	8.20	
50BS48	48	BS	9.910	9.556	3/4	2 1/2	0.343	1 1/16	23/32	3 3/4	9.10	
50BS50	50	BS	10.310	9.954	3/4	2 1/2	0.343	1 1/16	23/32	3 3/4	9.70	
50BS52	52	BS	10.710	10.351	3/4	2 1/2	0.343	1 1/16	23/32	3 3/4	10.30	
50BS54	54	BS	11.110	10.749	3/4	2 1/2	0.343	1 1/16	23/32	3 3/4	10.90	
50BS60	60	BS	12.300	11.942	3/4	2 1/2	0.343	1 1/16	23/32	3 3/4	13.00	
50BS70	70	BS	14.290	13.931	3/4	2 1/2	0.343	1 1/4	29/32	3 3/4	17.50	
50BS72	72	BS	14.690	14.329	3/4	2 1/2	0.343	1 1/4	29/32	3 3/4	18.30	
50BS76	76	BS	15.490	15.124	3/4	2 1/2	0.343	1 1/4	29/32	3 3/4	20.10	
50BS80	80	BS	16.280	15.920	3/4	3 1/8	0.343	1 5/8	1 9/32	4 5/8	25.20	
50BS84	84	BS	17.080	16.715	3/4	3 1/8	0.343	1 5/8	1 9/32	4 5/8	27.20	
50BS90	90	BS	18.270	17.909	3/4	3 1/8	0.343	1 5/8	1 9/32	4 5/8	30.30	
50BS95	95	BS	19.270	18.903	3/4	3 1/8	0.343	1 5/8	1 9/32	4 5/8	33.10	
50BS96	96	BS	19.470	19.102	3/4	3 1/8	0.343	1 5/8	1 9/32	4 5/8	33.70	
50BS112	112	BS	22.650	22.285	3/4	3 1/8	0.343	1 5/8	1 9/32	4 5/8	43.80	

^THub is recessed for chain clearance.

SPROCKETS FOR No.50 PITCH (5/8" ANSI) CHAIN

STEEL

5/8" PITCH



[SINGLE TYPE C]

TYPE - C

SPROCKETS FOR No.50 PITCH (5/8" ANSI) CHAIN									
PART NUMBER	NO. OF TEETH	DIAMETERS		BORE RANGE			DIMENSIONS		WEIGHT LBS.
		O.D.	P.D.	MIN	MAX	STOCK BORE	HUB DIAMETER	LENGTH THRU	
50C12	12	2.710	2.415	5/8	1 1/4	5/8	2*	1 5/8	1.25
50C13	13	2.910	2.612	5/8	1 5/16	5/8	1 7/8	1 5/8	1.47
50C14	14	3.110	2.809	5/8	1 7/16	5/8	2 1/8	1 5/8	1.69
50C15	15	3.320	3.006	5/8	1 1/2	5/8	2 3/8	1 5/8	1.94
50C16	16	3.520	3.204	5/8	1 3/4	5/8	2 1/2	1 5/8	2.42
50C17	17	3.720	3.401	5/8	1 7/8	5/8	2 47/64	1 5/8	2.75
50C18	18	3.920	3.599	5/8	1 7/8	5/8	2 15/16	1 5/8	3.25
50C19	19	4.120	3.797	3/4	2	3/4	3 5/64	1 5/8	3.87
50C20	20	4.320	3.995	3/4	2	3/4	3	1 5/8	4.40

* Has recessed groove in hub for chain clearance.