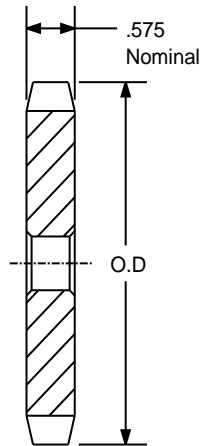


SPROCKETS FOR No.80 PITCH (1" ANSI) CHAIN

STEEL

1" PITCH



TYPE - A

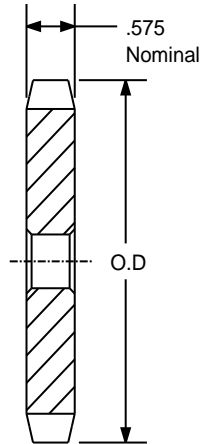
SPROCKETS FOR No.80 PITCH (1" ANSI) CHAIN						
PART NUMBER	NO. OF TEETH	TYPE	DIAMETERS		STOCK BORE	WEIGHT
			O.D.	P.D.		
80A9	9	A	3.350	2.924	15/16	0.80
80A10	10	A	3.680	3.236	15/16	1.00
80A11	11	A	4.010	3.550	15/16	1.30
80A12	12	A	4.330	3.864	15/16	1.50
80A13	13	A	4.660	4.179	15/16	1.80
80A14	14	A	4.980	4.494	15/16	2.20
80A15	15	A	5.300	4.810	15/16	2.50
80A16	16	A	5.630	5.126	15/16	2.90
80A17	17	A	5.950	5.442	15/16	3.30
80A18	18	A	6.270	5.759	15/16	3.70
80A19	19	A	6.590	6.076	15/16	4.10
80A20	20	A	6.910	6.392	15/16	4.70
80A21	21	A	7.240	6.710	15/16	4.90
80A22	22	A	7.560	7.027	15/16	5.50
80A23	23	A	7.880	7.344	15/16	6.30
80A24	24	A	8.200	7.661	15/16	6.70
80A25	25	A	8.520	7.979	15/16	7.20
80A26	26	A	8.840	8.296	1 3/16	7.80
80A27	27	A	9.160	8.614	1 3/16	8.60
80A28	28	A	9.480	8.931	1 3/16	9.30
80A29	29	A	9.800	9.249	1 3/16	9.80
80A30	30	A	10.110	9.567	1 3/16	10.70
80A31	31	A	10.430	9.885	1 3/16	11.30
80A32	32	A	10.750	10.202	1 3/16	12.10
80A33	33	A	11.070	10.520	1 3/16	13.60
80A34	34	A	11.390	10.838	1 3/16	14.30
80A35	35	A	11.710	11.156	1 3/16	14.80
80A36	36	A	12.030	11.474	1 3/16	16.10
80A37	37	A	12.350	11.792	1 3/16	16.80
80A38	38	A	12.670	12.110	1 3/16	17.20
80A39	39	A	12.990	12.426	1 3/16	17.90
80A40	40	A	13.310	12.746	1 3/16	18.90

Has recessed groove in hub for chain clearance.
 Maximum bores shown will accommodate standard keyseat and setscrew over keyseat.
 Slightly larger bores are possible with no keyseats, or setscrew at angle to keyseat.

SPROCKETS FOR No.80 PITCH (1" ANSI) CHAIN

STEEL

1" PITCH



TYPE - A

SPROCKETS FOR No.80 PITCH (1" ANSI) CHAIN

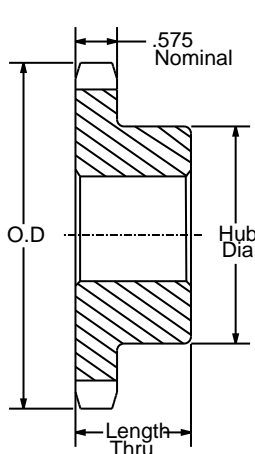
PART NUMBER	NO. OF TEETH	TYPE	DIAMETERS		STOCK BORE	WEIGHT
			O.D.	P.D.		
80A41	41	A	13.630	13.064	1 1/4	21.00
80A42	42	A	13.940	13.282	1 1/4	21.80
80A43	43	A	14.260	13.700	1 1/4	23.60
80A44	44	A	14.580	14.018	1 1/4	24.30
80A45	45	A	14.900	14.330	1 1/4	25.20
80A46	46	A	15.220	14.454	1 1/4	26.60
80A47	47	A	15.540	14.972	1 1/4	26.40
80A48	48	A	15.860	15.290	1 1/4	27.80
80A49	49	A	16.180	15.608	1 1/4	28.90
80A50	50	A	16.500	15.926	1 1/4	30.90
80A51	51	A	16.810	16.244	1 1/4	32.20
80A52	52	A	17.130	16.562	1 1/4	33.00
80A53	53	A	17.450	16.880	1 1/4	34.90
80A54	54	A	17.770	17.168	1 1/4	36.60
80A55	55	A	18.090	17.517	1 1/4	37.50
80A56	56	A	18.410	17.835	1 1/4	39.40
80A57	57	A	18.730	18.153	1 1/4	40.40
80A58	58	A	19.040	18.471	1 1/4	41.30
80A59	59	A	19.360	18.780	1 1/4	42.90
80A60	60	A	19.680	19.107	1 1/4	45.30
80A65	65	A	21.270	20.698	1 1/4	52.20
80A70	70	A	22.870	22.289	1 1/2	59.80
80A72	72	A	23.500	22.926	1 1/2	65.70
80A76	76	A	24.780	24.198	1 1/2	70.20
80A80	80	A	26.050	25.471	1 1/2	79.60
80A84	84	A	27.330	26.744	1 1/2	86.10
80A90	90	A	29.240	28.654	1 1/2	101.00
80A96	96	A	31.150	30.563	1 1/2	120.00
80A112	112	A	36.240	35.655	1 1/2	165.00

Has recessed groove in hub for chain clearance.
 Maximum bores shown will accommodate standard keyseat and setscrew over keyseat.
 Slightly larger bores are possible with no keyseats, or setscrew at angle to keyseat.

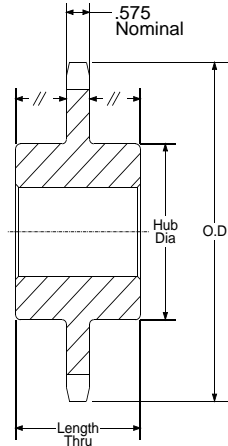
SPROCKETS FOR No.80 PITCH (1" ANSI) CHAIN

STEEL

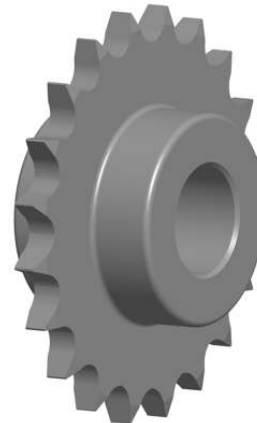
1" PITCH



TYPE -B



TYPE -C



SPROCKETS FOR No.80 PITCH (1" ANSI) CHAIN

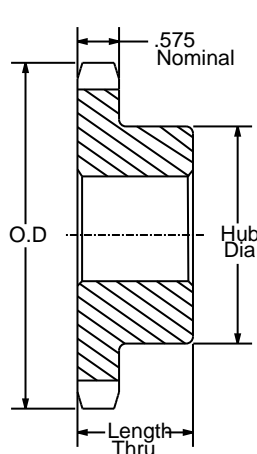
PART NUMBER	NO. OF TEETH	TYPE	DIAMETERS		BORE RANGE		HUB DIMENSIONS		WEIGHT LBS.
			O.D.	P.D.	MIN	MAX	DIAMETER	LENGTH THRU	
80B8	8	B	3.010	2.613	1	1	1 15/16	1 5/8	1.40
80B9	9	B	3.350	2.924	1	1 5/16	2 1/4	1 5/8	1.60
80B10	10	B	3.680	3.236	1	1 1/2	2 9/16	1 5/8	2.20
80B11	11	B	4.010	3.550	1	1 5/8	2 13/16	1 5/8	3.20
80B12	12	B	4.330	3.864	1	1 7/8	3 1/8	1 5/8	3.40
80B13	13	B	4.660	4.179	1	2	3	1 1/2	3.50
80B14	14	B	4.980	4.464	1	2 1/4	3 1/4	1 1/2	4.10
80B15	15	B	5.300	4.810	1	2 1/2	3 13/16	1 1/2	5.30
80B16	16	B	5.630	5.126	1	2 3/4	4	1 1/2	5.90
80B17	17	B	5.950	5.442	1	2 3/4	4	1 1/2	6.60
80B18	18	B	6.270	5.759	1	2 3/4	4 1/4	1 1/2	7.30
80B19	19	B	6.590	6.076	1	2 3/4	4 1/4	1 1/2	7.80
80B20	20	B	6.910	6.392	1	2 3/4	4 1/4	1 1/2	8.40
80B21	21	B	7.240	6.710	1	2 3/4	4 1/4	1 3/4	9.40
80B22	22	B	7.560	7.027	1	2 3/4	4 1/4	1 3/4	10.00
80B23	23	B	7.880	7.344	1	2 3/4	4 1/4	1 3/4	10.70
80B24	24	B	8.200	7.661	1	2 3/4	4 1/4	1 3/4	11.30
80B25	25	B	8.520	7.979	1	2 3/4	4 1/4	1 3/4	11.90
80B26	26	B	8.840	8.296	1 1/4	3 1/4	4 3/4	2	14.30
80B27	27	B	9.160	8.614	1 1/4	3 1/4	4 3/4	2	15.40
80B28	28	B	9.480	8.931	1 1/4	3 1/4	4 3/4	2	16.00
80B29	29	B	9.800	9.249	1 3/16	3 1/4	4 3/4	2	17.10
80B30	30	B	10.110	9.567	1 3/16	3 1/4	4 3/4	2	17.40
80B31	31	B	10.430	9.885	1 3/16	3 1/4	4 3/4	2	18.70
80B32	32	B	10.750	10.202	1 3/16	3 1/4	4 3/4	2	19.50
80B33	33	B	11.070	10.520	1 3/16	3 1/4	4 3/4	2	19.60
80B34	34	B	11.390	10.838	1 3/16	3 1/4	4 3/4	2	21.30
80B35	35	B	11.710	11.156	1 3/16	3 1/4	4 3/4	2	22.10
80B36	36	B	12.030	11.474	1 3/16	3 1/4	4 3/4	2	23.10
80B37	37	B	12.350	11.792	1 3/16	3 1/4	4 3/4	2	23.80
80B38	38	B	12.670	12.110	1 3/16	3 1/4	4 3/4	2	24.70
80B39	39	B	12.990	12.428	1 3/16	3 1/4	4 3/4	2	25.60
80B40	40	B	13.310	12.746	1 3/16	3 1/4	4 3/4	2	26.70

Has recessed groove in hub for chain clearance.
 Maximum bores shown will accommodate standard keyseat and setscrew over keyseat.
 Slightly larger bores are possible with no keyseats, or setscrew at angle to keyseat.

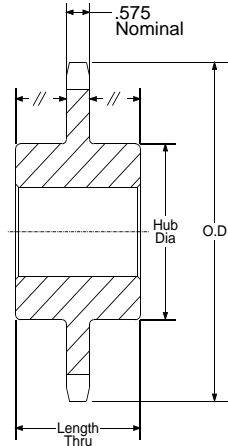
SPROCKETS FOR No.80 PITCH (1" ANSI) CHAIN

STEEL

1" PITCH



TYPE -B



TYPE -C



SPROCKETS FOR No.80 PITCH (1" ANSI) CHAIN

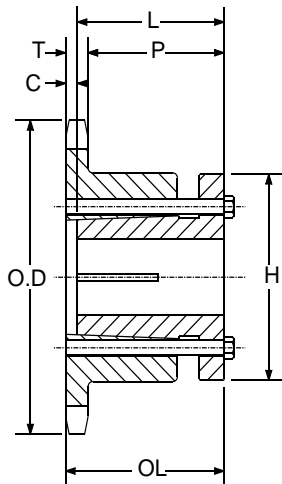
PART NUMBER	NO. OF TEETH	TYPE	DIAMETERS		BORE RANGE		HUB DIMENSIONS		WEIGHT LBS.
			O.D.	P.D.	MIN	MAX	DIAMETER	LENGTH THRU	
80B41	41	B	13.630	13.064	1 1/4	3 1/4	4 3/4	2	27.80
80B42	42	B	13.940	13.382	1 1/4	3 1/4	4 3/4	2	28.70
80B43	43	B	14.260	13.700	1 1/4	3 1/4	4 3/4	2	29.40
80B44	44	B	14.580	14.018	1 1/4	3 1/4	4 3/4	2	29.90
80B45	45	B	14.900	14.336	1 1/4	3 1/4	4 3/4	2	31.40
80B46	46	B	15.220	14.654	1 1/4	3 1/4	4 3/4	2	33.10
80B47	47	B	15.540	14.972	1 1/4	3 1/4	4 3/4	2	34.00
80B48	48	B	15.860	15.290	1 1/4	3 1/4	4 3/4	2	35.50
80B49	49	B	16.180	15.608	1 1/4	3 1/4	4 3/4	2	35.80
80B50	50	B	16.500	15.926	1 1/4	3 1/4	4 3/4	2	37.30
80B51	51	B	16.810	16.244	1 1/4	3 1/4	4 3/4	2	38.60
80B52	52	B	17.130	16.562	1 1/4	3 1/4	4 3/4	2	39.40
80B53	53	B	17.450	16.880	1 1/4	3 1/4	4 3/4	2	41.30
80B54	54	B	17.770	17.198	1 1/4	3 1/2	5 1/4	2	44.70
80B55	55	B	18.090	17.517	1 1/4	3 1/2	5 1/4	2	45.60
80B56	56	B	18.410	17.835	1 1/4	3 1/2	5 1/4	2	47.50
80B57	57	B	18.730	18.153	1 1/4	3 1/2	5 1/4	2	48.50
80B58	58	B	19.040	18.471	1 1/4	3 1/2	5 1/4	2	50.50
80B59	59	B	19.360	18.789	1 1/4	3 1/2	5 1/4	2	52.10
80B60	60	B	19.680	19.107	1 1/4	3 1/2	5 1/4	2	54.50
80B65	65	B	21.270	20.698	1 1/4	3 1/2	5 1/4	2	61.80
80C70	70	C	22.870	22.289	1 1/2	4 1/4	6 1/4	3 1/2	75.70
80C72	72	C	23.500	22.926	1 1/2	4 1/4	6 1/4	3 1/2	81.40
80C76	76	C	24.780	24.198	1 1/2	4 1/4	6 1/4	3 1/2	87.80
80C80	80	C	26.050	25.471	1 1/2	4 1/4	6 1/4	3 1/2	89.90
80C84	84	C	27.330	26.744	1 1/2	4 1/4	6 1/4	3 1/2	99.20
80C90	90	C	29.240	28.684	1 1/2	4 1/4	6 1/4	3 1/2	106.00
80C96	96	C	31.150	30.563	1 1/2	4 1/4	6 1/4	3 1/2	117.00
80C112	112	C	36.240	35.655	1 1/2	4 1/4	6 1/4	3 1/2	154.00

Has recessed groove in hub for chain clearance.
 Maximum bores shown will accommodate standard keyseat and setscrew over keyseat.
 Slightly larger bores are possible with no keyseats, or setscrew at angle to keyseat.

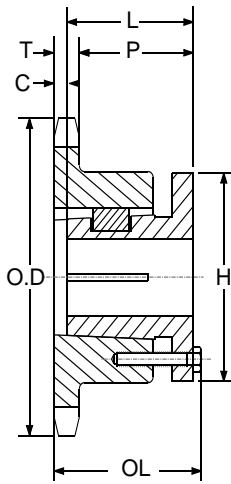
SPROCKETS FOR No.80 PITCH (1" ANSI) CHAIN

STEEL

1" PITCH



TYPE 3



TYPE 4



[SINGLE SPLIT BUSH]

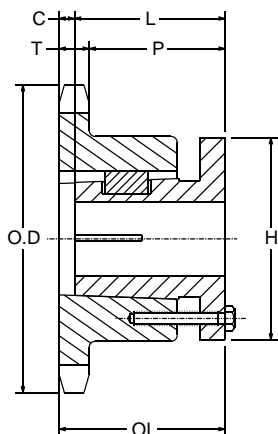
SPROCKETS FOR No.80 PITCH (1" ANSI) CHAIN

OLD PART NUMBER	NEW PART NUMBER	NO. OF TEETH	BUSHING	TYPE	DIAMETERS		BORE RANGE		DIMENSIONS						WEIGHT LBS.
					O.D.	P.D.	MIN	MAX	T(NOM.)	O.L.	L	P	C	H	
80H10	H 80H10 -	10	H	3	3.68	3.236	3/8	1 1/2	0.575	2 3/32	1 1/4	1 21/64	21/32	2 1/2	2.0
80H11	H 80H11 -	11	H	3	3.98	3.550	3/8	1 1/2	0.575	1 1/2	1 1/4	3/4	1/16	2 1/2	1.3
80P11	P180P11 -	11	P1	4	3.98	3.550	1/2	1 3/4	0.575	2 11/32	1 15/16	1 17/32	5/32	3	1.8
80P12	P180P12 -	12	P1	4	4.33	3.864	1/2	1 3/4	0.575	2 3/16	1 15/16	1 3/8	0	3	2.0
80P13	P180P13 -	13	P1	4	4.66	4.179	1/2	1 3/4	0.575	2 3/16	1 15/16	1 3/8	0	3	2.3
80P14	P180P14 -	14	P1	4	4.98	4.494	1/2	1 3/4	0.575	2 3/16	1 15/16	1 3/8	0	3	2.7
80Q14	Q180Q14 -	14	Q1	4	4.98	4.494	3/4	2 11/16	0.575	2 25/32	2 1/2	1 15/16	0	1/8	3.0
80P15	P180P15 -	15	P1	4	5.31	4.810	1/2	1 3/4	0.575	2 3/16	1 15/16	1 3/8	0	3	3.2
80Q15	Q180Q15 -	15	Q1	4	5.31	4.810	3/4	2 11/16	0.575	2 25/32	2 1/2	1 15/16	0	4 1/8	3.6
80P16	P180P16 -	16	P1	4	5.63	5.126	1/2	1 3/4	0.575	2 3/16	1 15/16	1 3/8	0	3	3.6
80Q16	Q180Q16 -	16	Q1	4	5.63	5.126	3/4	2 11/16	0.575	2 25/32	2 1/2	1 15/16	0	4 1/8	4.6
80P17	P180P17 -	17	P1	4	5.95	5.442	1/2	1 3/4	0.575	2 3/16	1 15/16	1 3/8	0	3	3.9
80Q17	Q180Q17 -	17	Q1	4	5.95	5.442	3/4	2 11/16	0.575	2 25/32	2 1/2	1 15/16	0	4 1/8	5.4
80P18	P180P18 -	18	P1	4	6.27	5.759	1/2	1 3/4	0.575	2 3/16	1 15/16	1 3/8	0	3	4.5
80Q18	Q180Q18 -	18	Q1	4	6.27	5.759	3/4	2 11/16	0.575	2 25/32	2 1/2	1 15/16	0	4 1/8	6.0
80P19	P180P19 -	19	P1	4	6.59	6.079	1/2	1 3/4	0.575	2 3/16	1 15/16	1 3/8	0	3	4.8
80Q19	Q180Q19 -	19	Q1	4	6.59	6.079	3/4	2 11/16	0.575	2 25/32	2 1/2	1 15/16	0	4 1/8	6.4
80Q20	Q180Q20 -	20	Q1	4	6.91	6.392	3/4	2 11/16	0.575	2 25/32	2 1/2	1 15/16	0	4 1/8	6.9
80Q21	Q180Q21 -	21	Q1	4	7.24	6.710	3/4	2 11/16	0.575	2 25/32	2 1/2	1 15/16	0	4 1/8	7.4
80Q22	Q180Q22 -	22	Q1	4	7.56	7.027	3/4	2 11/16	0.575	2 25/32	2 1/2	1 15/16	0	4 1/8	8.0
80Q23	Q180Q23 -	23	Q1	4	7.88	7.344	3/4	2 11/16	0.575	2 25/32	2 1/2	1 15/16	0	4 1/8	8.5
80Q24	Q180Q24 -	24	Q1	4	8.20	7.661	3/4	2 11/16	0.575	2 25/32	2 1/2	1 15/16	0	4 1/8	9.3
80Q25	Q180Q25 -	25	Q1	4	8.52	7.979	3/4	2 11/16	0.575	2 25/32	2 1/2	1 15/16	0	4 1/8	9.9
80Q26	Q180Q26 -	26	Q1	4	8.84	8.296	3/4	2 11/16	0.575	2 25/32	2 1/2	1 15/16	0	4 1/8	10.4
80Q27	Q180Q27 -	27	Q1	4	9.16	8.614	3/4	2 11/16	0.575	2 25/32	2 1/2	1 15/16	0	4 1/8	10.9
80Q28	Q180Q28 -	28	Q1	4	9.48	8.931	3/4	2 11/16	0.575	2 25/32	2 1/2	1 15/16	0	4 1/8	11.5
80Q29	Q180Q29 -	29	Q1	4	9.80	9.567	3/4	2 11/16	0.575	2 25/32	2 1/2	1 15/16	0	4 1/8	12.5
80Q30	Q180Q30 -	30	Q1	4	10.11	9.567	3/4	2 11/16	0.575	2 25/32	2 1/2	1 15/16	0	4 1/8	13.0
80Q31	Q180Q31 -	31	Q1	4	10.43	9.885	3/4	2 11/16	0.575	2 25/32	2 1/2	1 15/16	0	4 1/8	13.9
80Q32	Q180Q32 -	32	Q1	4	10.75	10.202	3/4	2 11/16	0.575	2 25/32	2 1/2	1 15/16	0	4 1/8	14.8
80Q33	Q180Q33 -	33	Q1	4	11.07	10.520	3/4	2 11/16	0.575	2 25/32	2 1/2	1 15/16	0	4 1/8	15.5
80Q34	Q180Q34 -	34	Q1	4	11.39	10.838	3/4	2 11/16	0.575	2 25/32	2 1/2	1 15/16	0	4 1/8	16.3
80Q35	Q180Q35 -	35	Q1	4	11.71	11.156	3/4	2 11/16	0.575	2 25/32	2 1/2	1 15/16	0	4 1/8	17.8
80Q36	Q180Q36 -	36	Q1	4	11.98	11.474	3/4	2 11/16	0.575	2 25/32	2 1/2	1 15/16	0	4 1/8	18.1
80R36	R180R36 -	36	R1	4	11.98	11.474	1 1/8	3 3/4	0.575	3 5/32	2 7/8	5 3/8	0	5 3/8	19.5
80Q37	Q180Q37 -	37	Q1	4	12.35	11.792	3/4	2 11/16	0.575	2 25/32	2 1/2	1 15/16	0	4 1/8	18.5
80Q38	Q180Q38 -	38	Q1	4	12.67	12.110	3/4	2 11/16	0.575	2 25/32	2 1/2	1 15/16	0	4 1/8	20.0
80R39	R180R39 -	39	R1	4	12.99	12.428	1 1/8	3 3/4	0.575	3 5/32	2 7/8	2 5/16	0	5 3/8	22.8
80Q40	Q180Q40 -	40	Q1	4	13.31	12.746	3/4	2 11/16	0.575	2 25/32	2 1/2	1 15/16	0	4 1/8	21.9
80R40	R180R40 -	40	R1	4	13.31	12.746	1 1/8	3 3/4	0.575	3 5/32	2 7/8	2 5/16	0	5 3/8	23.4

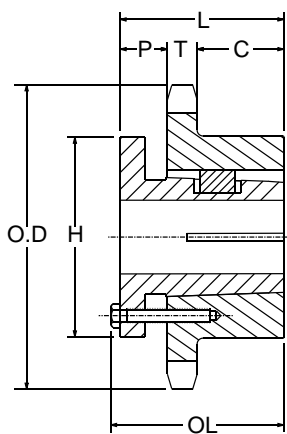
SPROCKETS FOR No.80 PITCH (1" ANSI) CHAIN

STEEL

1" PITCH



TYPE 4



TYPE 5



[SINGLE SPLIT BUSH]

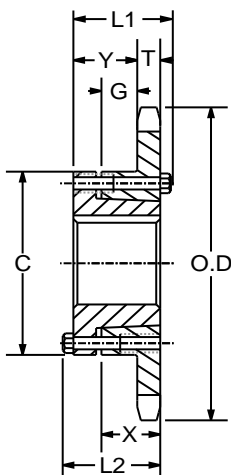
SPROCKETS FOR No.80 PITCH (1" ANSI) CHAIN

OLD PART NUMBER	NEW PART NUMBER	NO. OF TEETH	BUSHING	TYPE	DIAMETERS		BORE RANGE		DIMENSIONS						WEIGHT LBS.
					O.D.	P.D.	MIN	MAX	T(NOM.)	O.L.	L	P	C	H	
80R41	80R41 -R1	41	R1	4	13.63	13.064	1 1/8	3 3/4	0.575	3 5/32	2 7/8	2 5/16	0	5 3/8	2.0
80Q42	80Q42 -Q1	42	Q1	4	13.94	13.382	3/4	2 11/16	0.575	2 25/32	2 1/2	1 15/16	0	4 1/8	1.3
80R42	80R42 -R1	42	R1	4	13.94	13.382	1 1/8	3 3/4	0.575	3 5/32	2 7/8	2 5/16	0	4 1/8	1.8
80R44	80R44 -R1	44	R1	4	14.58	14.018	1 1/8	3 3/4	0.575	3 5/32	2 7/8	2 5/16	0	5 3/8	2.0
80Q45	80Q45 -Q1	45	Q1	4	14.90	14.336	3/4	2 11/16	0.575	2 25/32	2 1/2	1 15/16	0	4 1/8	2.3
80R45	80R45 -R1	45	R1	4	14.90	14.336	1 1/8	3 3/4	0.575	3 5/32	2 7/8	2 5/16	0	5 3/8	2.7
80R47	80R47 -R1	47	R1	4	15.54	14.972	1 1/8	3 3/4	0.575	3 5/32	2 7/8	2 5/16	0	5 3/8	3.0
80Q48	80Q48 -Q1	48	Q1	4	15.86	15.290	3/4	2 11/16	0.575	2 25/32	2 1/2	1 15/16	0	4 1/8	30.8
80R48	80R48 -R1	48	R1	4	15.86	15.290	1 1/8	3 3/4	0.575	3 5/32	2 7/8	2 5/16	0	5 3/8	32.3
80R50	80R50 -R1	50	R1	4	16.50	15.926	1 1/8	3 3/4	0.575	3 5/32	2 7/8	2 5/16	0	5 3/8	35.1
80Q54	80Q54 -Q1	54	Q1	4	17.77	17.198	3/4	2 11/16	0.575	3 5/32	2 1/2	1 15/16	0	4 1/8	38.5
80R54	80R54 -R1	54	R1	4	17.77	17.198	1 1/8	3 3/4	0.575	3 5/32	2 7/8	2 5/16	0	5 3/8	40.8
80R56	80R56 -R1	56	R1	4	18.41	17.835	1 1/8	3 3/4	0.575	3 5/32	2 7/8	2 5/16	0	5 3/8	44.0
80Q60	80Q60 -Q1	60	Q1	4	19.68	19.107	3/4	2 11/16	0.575	2 25/32	2 1/2	1 15/16	0	4 1/8	46.8
80R60	80R60 -R1	60	R1	4	19.68	19.107	1 1/8	3 3/4	0.575	3 5/32	2 7/8	2 5/16	0	5 3/8	47.3
80Q70	80Q70 -Q1	70	Q1	4	22.83	22.289	3/4	2 11/16	0.575	2 25/32	2 1/2	2 5/16	0	4 1/8	60.0
80R70	80R70 -R1	70	R1	4	22.83	22.289	1 1/8	3 3/4	0.575	3 5/32	2 7/8	2 5/16	0	5 3/8	63.5
80Q72	80Q72 -Q1	72	Q1	4	23.46	22.926	3/4	2 11/16	0.575	2 25/32	2 1/2	2 5/16	0	4 1/8	67.5
80R72	80R72 -R1	72	R1	5	23.46	22.926	1 1/8	3 3/4	0.575	3 5/32	2 7/8	7/8	1 7/16	5 3/8	69.4
80R80	80R80 -R1	80	R1	5	26.01	25.471	1 1/8	3 3/4	0.575	3 5/32	2 7/8	7/8	1 7/16	5 3/8	85.0
80R84	80R84 -R1	84	R1	5	27.33	26.744	1 1/8	3 3/4	0.575	3 5/32	2 7/8	7/8	1 7/16	5 3/8	90.0
80R96	80R96 -R1	96	R1	5	31.15	30.563	1 1/8	3 3/4	0.575	3 5/32	2 7/8	7/8	1 7/16	5 3/8	110.0
80S112	80S112 -S1	112	S1	5	36.24	35.655	1 11/16	4 1/4	0.575	4 3/4	4 3/8	1 1/8	2 3/4	6 3/8	165.0

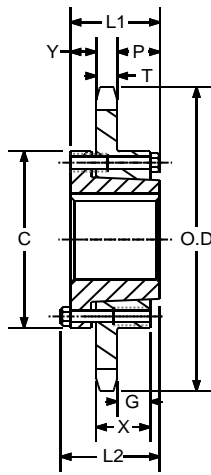
SPROCKETS FOR No.80 PITCH (1" ANSI) CHAIN

STEEL

3/4" PITCH



TYPE -QD-B



TYPE -QD-C



[SINGLE TYPE QD BUSH]

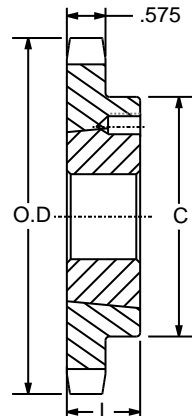
SPROCKETS FOR No.80 PITCH (1" ANSI) CHAIN

OLD PART NUMBER	NEW PART NUMBER	NO. OF TEETH	BUSHING	TYPE	DIAMETERS		BORE RANGE		DIMENSIONS							WEIGHT	
					O.D.	P.D.	MIN	MAX	L1	L2	C	Y	G	X	T (NOM.)	WITH HUB	RIM ONLY
80SH11	80QD11-SH	11	SH	QD-B	4.010	3.550	1/2	1 5/8	1 7/16	1 7/16	2 11/16	21/32	15/64	13/16	0.575	2.0	1.0
80SH12	80QD12-SH	12	SH	QD-B	4.330	3.864	1/2	1 5/8	1 7/16	1 7/16	2 11/16	21/32	15/64	13/16	0.575	2.4	1.4
80SDS13	80QD13-SDS	13	SDS	QD-B	4.660	4.179	1/2	2	1 1/2	1 1/2	3 3/16	47/64	11/64	3/4	0.575	2.5	1.5
80SDS14	80QD14-SDS	14	SDS	QD-B	4.980	4.494	1/2	2	1 1/2	1 1/2	3 3/16	47/64	11/64	3/4	0.575	2.8	1.8
80SK15	80QD15-SK	15	SK	QD-B	5.300	4.810	1/2	2 5/8	2 1/8	2 1/8	3 7/8	1 19/64	21/32	1 1/4	0.575	4.5	2.5
80SK16	80QD16-SK	16	SK	QD-B	5.630	5.126	1/2	2 5/8	2 1/8	2 1/8	3 7/8	1 19/64	21/32	1 1/4	0.575	5.1	3.1
80SK17	80QD17-SK	17	SK	QD-B	5.950	5.442	1/2	2 5/8	2 1/8	2 1/8	3 7/8	1 19/64	21/32	1 1/4	0.575	5.5	3.5
80SK18	80QD18-SK	18	SK	QD-B	6.270	5.759	1/2	2 5/8	2 1/8	2 1/8	3 7/8	1 19/64	21/32	1 1/4	0.575	5.9	3.9
80SK19	80QD19-SK	19	SK	QD-B	6.590	6.076	1/2	2 5/8	2 1/8	2 1/4	3 7/8	1 19/64	21/32	1 1/4	0.575	6.4	4.4
80SF20	80QD20-SF	20	SF	QD-B	6.910	6.392	1/2	2 15/16	2 1/4	2 1/4	4 5/8	1 27/64	21/32	1 1/4	0.575	8.3	5.3
80SF21	80QD21-SF	21	SF	QD-B	7.240	6.710	1/2	2 15/16	2 1/4	2 1/4	4 5/8	1 27/64	21/32	1 1/4	0.575	8.7	5.7
80SF22	80QD22-SF	22	SF	QD-B	7.560	7.027	1/2	2 15/16	2 1/4	2 1/4	4 5/8	1 27/64	21/32	1 1/4	0.575	9.3	6.3
80SF23	80QD23-SF	23	SF	QD-B	7.880	7.344	1/2	2 15/16	2 1/4	2 1/4	4 5/8	1 27/64	21/32	1 1/4	0.575	9.8	6.8
80SF24	80QD24-SF	24	SF	QD-B	8.200	7.661	1/2	2 15/16	2 1/4	2 1/4	4 5/8	1 27/64	21/32	1 1/4	0.575	10.5	7.5
80SF25	80QD25-SF	25	SF	QD-B	8.520	7.979	1/2	2 15/16	2 1/4	2 1/4	4 5/8	1 27/64	21/32	1 1/4	0.575	11.0	8.0
80SF26	80QD26-SF	26	SF	QD-B	8.840	8.296	1/2	2 15/16	2 1/4	2 1/4	4 5/8	1 27/64	21/32	1 1/4	0.575	11.6	8.6
80SF27	80QD27-SF	27	SF	QD-B	9.160	8.614	1/2	2 15/16	2 1/4	2 1/4	4 5/8	1 27/64	21/32	1 1/4	0.575	12.4	9.4
80SF28	80QD28-SF	28	SF	QD-B	9.480	8.931	1/2	2 15/16	2 1/4	2 1/4	4 5/8	1 27/64	21/32	1 1/4	0.575	13.2	10.2
80SF30	80QD30-SF	30	SF	QD-B	10.110	9.567	1/2	2 15/16	2 1/4	2 1/4	4 5/8	1 27/64	21/32	1 1/4	0.575	14.3	11.3
80SF32	80QD32-SF	32	SF	QD-B	10.750	10.202	1/2	2 15/16	2 1/4	2 1/4	4 5/8	1 27/64	21/32	1 1/4	0.575	16.0	13.0
80SF33	80QD33-SF	33	SF	QD-B	11.070	10.520	1/2	2 15/16	2 1/4	2 1/4	4 5/8	1 27/64	21/32	1 1/4	0.575	16.5	13.5
80SF34	80QD34-SF	34	SF	QD-B	11.390	10.838	1/2	2 15/16	2 1/4	2 1/4	4 5/8	1 27/64	21/32	1 1/4	0.575	17.1	14.1
80SF35	80QD35-SF	35	SF	QD-B	11.710	11.156	1/2	2 15/16	2 1/4	2 1/4	4 5/8	1 27/64	21/32	1 1/4	0.575	18.5	15.5
80SF36	80QD36-SF	36	SF	QD-B	12.030	11.474	1/2	2 15/16	2 1/4	2 1/4	4 5/8	1 27/64	21/32	1 1/4	0.575	19.9	16.9
80SF40	80QD40-SF	40	SF	QD-B	13.310	12.746	1/2	2 15/16	2 1/4	2 1/4	4 5/8	1 27/64	21/32	1 1/4	0.575	23.6	20.6
80SF42	80QD42-SF	42	SF	QD-B	13.940	13.382	1/2	2 15/16	2 1/4	2 1/4	4 5/8	1 27/64	21/32	1 1/4	0.575	25.4	22.4
80SF45	80QD45-SF	45	SF	QD-B	14.900	14.336	1/2	2 15/16	2 1/4	2 1/4	4 5/8	1 27/64	21/32	1 1/4	0.575	28.1	25.1
80SF48	80QD48-SF	48	SF	QD-B	15.860	15.290	1/2	2 15/16	2 1/4	2 1/4	4 5/8	1 27/64	21/32	1 1/4	0.575	31.6	28.6
80SF54	80QD54-SF	54	SF	QD-B	17.770	17.198	1/2	2 15/16	2 1/4	2 1/4	4 5/8	1 27/64	21/32	1 1/4	0.575	39.8	36.8
80SF60	80QD60-SF	60	SF	QD-B	19.680	19.107	1/2	2 15/16	2 1/4	2 1/4	4 5/8	1 27/64	21/32	1 1/4	0.575	48.8	45.8
80E70	80QD70-E	70	E	QD-C	22.870	22.289	7/8	3 1/2	2 15/16	2 15/16	4 5/8	7/8	1 3/64	1 5/8	0.575	65.6	55.6
80E72	80QD72-E	72	E	QD-C	23.500	22.926	7/8	3 1/2	2 15/16	2 15/16	4 5/8	7/8	1 3/64	1 5/8	0.575	69.3	59.3
80E80	80QD80-E	80	E	QD-C	26.050	25.471	7/8	3 1/2	2 15/16	2 15/16	6	7/8	1 3/64	1 5/8	0.575	79.2	69.2
80E84	80QD84-E	84	E	QD-C	27.330	26.744	7/8	3 1/2	2 15/16	2 15/16	6	7/8	1 3/64	1 5/8	0.575	84.9	74.9
80E96	80QD96-E	96	E	QD-C	31.150	30.563	7/8	3 1/2	2 15/16	2 15/16	6	7/8	1 3/64	1 5/8	0.575	108.0	97.5
80F112	80QD112F	112	F	QD-C	36.240	35.655	7/8	3 15/16	4	4	6 5/8	1	1 59/64	2 1/2	0.575	145.0	134.0

SPROCKETS FOR No.80 PITCH (1" ANSI) CHAIN

STEEL

1" PITCH



TYPE - B

[SINGLE TAPER BUSH]

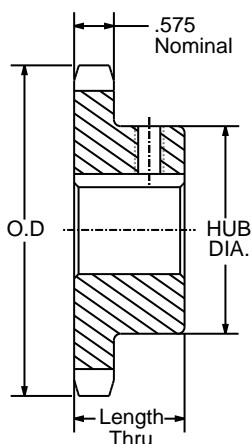
SPROCKETS FOR No.80 PITCH (1" ANSI) CHAIN												
OLD PART NUMBER	NEW PART NUMBER	NO. OF TEETH	BUSHING	TYPE	DIAMETERS		BORE RANGE		DIMENSIONS		WEIGHT	
					O.D.	P.D.	MIN	MAX	L	C	RIM ONLY	BUSH ONLY
80BTB10	80TL10-1215	10	1215	B	3.678	3.236	1/2	1 1/4	1 1/2	2 3/8*	1.1	0.8
80BTB11	80TL11-1215	11	1215	B	4.006	3.549	1/2	1 1/4	1 1/2	2 15/32*	1.5	0.8
80BTB12	80TL12-1615	12	1615	B	4.332	3.864	1/2	1 5/8	1 1/2	3	1.8	1.2
80BTB13	80TL13-1615	13	1615	B	4.657	4.179	1/2	1 5/8	1 1/2	3	2.3	1.2
80BTB14	80TL14-1615	14	1615	B	4.982	4.494	1/2	1 5/8	1 1/2	3 1/4	2.5	1.2
80BTB15	80TL15-1615	15	1615	B	5.305	4.810	1/2	1 5/8	1 1/2	3 1/4	2.7	1.2
80BTB16	80TL16-2012	16	2012	B	5.627	5.126	1/2	2	1 1/4	3 9/16	2.8	1.7
80BTB17	80TL17-2012	17	2012	B	5.950	5.442	1/2	2	1 1/4	3 9/16	3.1	1.7
80BTB18	80TL18-2012	18	2012	B	6.271	5.759	1/2	2	1 1/4	3 9/16	2.6	1.7
80BTB19	80TL19-2012	19	2012	B	6.593	6.076	1/2	2	1 1/4	3 9/16	4.1	1.7
80BTB20	80TL20-2517	20	2517	B	6.914	6.392	1/2	2 1/2	1 3/4	4 1/4	5.5	1.7
80BTB21	80TL21-2517	21	2517	B	7.235	6.710	1/2	2 1/2	1 3/4	4 1/4	6.0	3.5
80BTB22	80TL22-2517	22	2517	B	7.555	7.027	1/2	2 1/2	1 3/4	4 1/4	6.5	3.5
80BTB23	80TL23-2517	23	2517	B	7.875	7.344	1/2	2 1/2	1 3/4	4 1/4	7.0	3.5
80BTB24	80TL24-2517	24	2517	B	8.196	7.661	1/2	2 1/2	1 3/4	4 1/4	7.5	3.5
80BTB25	80TL25-2517	25	2517	B	8.516	7.979	1/2	2 1/2	1 3/4	4 1/4	8.1	3.5
80BTB26	80TL26-2517	26	2517	B	8.836	8.296	1/2	2 1/2	1 3/4	4 1/4	8.8	3.5
80BTB27	80TL27-2517	27	2517	B	9.156	8.614	1/2	2 1/2	1 3/4	4 1/4	9.0	3.5
80BTB28	80TL28-2517	28	2517	B	9.475	8.931	1/2	2 1/2	1 3/4	4 1/4	9.5	3.5
80BTB30	80TL30-2517	30	2517	B	10.114	9.567	1/2	2 1/2	1 3/4	4 1/4	11.5	3.5
80BTB32	80TL32-2517	32	2517	B	10.753	10.202	1/2	2 1/2	1 3/4	4 1/4	12.0	3.5
80BTB35	80TL35-2517	35	2517	B	11.711	11.156	1/2	2 1/2	1 3/4	4 1/4	15.2	3.5
80BTB36	80TL36-2517	36	2517	B	12.030	11.474	1/2	2 1/2	1 3/4	4 1/4	17.0	3.5
80BTB40	80TL40-2517	40	2517	B	13.306	12.746	1/2	2 1/2	1 3/4	4 1/4	21.0	3.5
80BTB45	80TL45-2517	45	2517	B	14.901	14.336	1/2	2 1/2	1 3/4	4 1/4	26.5	3.5
80BTB48	80TL48-2517	48	2517	B	15.857	15.290	1/2	2 1/2	1 3/4	4 1/4	29.5	3.5
80BTB54	80TL54-2517	54	2517	B	17.769	17.198	1/2	2 1/2	1 3/4	4 1/4	38.5	3.5
80BTB60	80TL60-2517	60	2517	B	19.681	19.107	1/2	2 1/2	1 3/4	4 1/4	45.0	3.5
80BTB70	80TL70-3020	70	3020	B	22.867	22.289	15/16	3	2	5 1/4	52.3	6.5
80BTB80	80TL80-3020	80	3020	B	26.052	25.471	15/16	3	2	5 1/4	69.2	6.5

*Has recessed groove in hub for chain clearance.

SPROCKETS FOR No.80 PITCH (1" ANSI) CHAIN

STEEL

1" PITCH



[SINGLE TYPE BS]

TYPE - BS

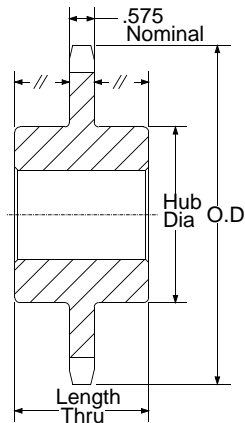
SPROCKETS FOR No.80 PITCH (1" ANSI) CHAIN																						
PART NUMBER	NO. OF TEETH	TYPE	DIAMETERS		LENGTH THRU	HUB DIA.	STOCK FINISHED BORES INCLUDES KEYWAY AND SETSCREW															WEIGHT LBS.
			O.D.	P.D.			1 3/8	1 7/16	1 5/8	1 5/8	1 3/4	1 15/16	2	2 3/16	2 7/16	2 15/16						
80BS41	41	BS	13.630	13.064	2	4 3/4					1 3/8	1 7/16	1 5/8	1 5/8	1 3/4		1 15/16	2	2 3/16	2 7/16	2 15/16	27.1
80BS42	42	BS	13.940	13.382	2	4 3/4					1 3/8	1 7/16	1 5/8	1 5/8	1 3/4		1 15/16	2	2 3/16	2 7/16	2 15/16	28.0
80BS43	43	BS	14.260	13.700	2	4 3/4					1 3/8	1 7/16	1 5/8	1 5/8	1 3/4		1 15/16	2	2 3/16	2 7/16	2 15/16	29.3
80BS44	44	BS	14.580	14.018	2	4 3/4					1 3/8	1 7/16	1 5/8	1 5/8	1 3/4		1 15/16	2	2 3/16	2 7/16	2 15/16	29.3
80BS45	45	BS	14.900	14.336	2	4 3/4					1 3/8	1 7/16	1 5/8	1 5/8	1 3/4		1 15/16	2	2 3/16	2 7/16	2 15/16	30.7
80BS46	46	BS	15.220	14.656	2	4 3/4					1 3/8	1 7/16	1 5/8	1 5/8	1 3/4		1 15/16	2	2 3/16	2 7/16	2 15/16	32.4
80BS47	47	BS	15.540	14.972	2	4 3/4					1 3/8	1 7/16	1 5/8	1 5/8	1 3/4		1 15/16	2	2 3/16	2 7/16	2 15/16	33.3
80BS48	48	BS	15.860	15.290	2	4 3/4					1 3/8	1 7/16	1 5/8	1 5/8	1 3/4		1 15/16	2	2 3/16	2 7/16	2 15/16	34.8
80BS49	49	BS	16.180	15.608	2	4 3/4					1 3/8	1 7/16	1 5/8	1 5/8	1 3/4		1 15/16	2	2 3/16	2 7/16	2 15/16	35.1
80BS50	50	BS	16.500	15.926	2	4 3/4					1 3/8	1 7/16	1 5/8	1 5/8	1 3/4		1 15/16	2	2 3/16	2 7/16	2 15/16	36.6
80BS51	51	BS	16.810	16.244	2	4 3/4					1 3/8	1 7/16	1 5/8	1 5/8	1 3/4		1 15/16	2	2 3/16	2 7/16	2 15/16	38.5
80BS52	52	BS	17.130	16.562	2	4 3/4					1 3/8	1 7/16	1 5/8	1 5/8	1 3/4		1 15/16	2	2 3/16	2 7/16	2 15/16	40.3
80BS53	53	BS	17.450	16.880	2	4 3/4					1 3/8	1 7/16	1 5/8	1 5/8	1 3/4		1 15/16	2	2 3/16	2 7/16	2 15/16	42.2
80BS54	54	BS	17.770	17.168	2	5 1/4					1 3/8	1 7/16	1 5/8	1 5/8	1 3/4		1 15/16	2	2 3/16	2 7/16	2 15/16	44.0
80BS55	55	BS	18.090	17.517	2	5 1/4					1 3/8	1 7/16	1 5/8	1 5/8	1 3/4		1 15/16	2	2 3/16	2 7/16	2 15/16	46.3
80BS56	56	BS	18.410	17.835	2	5 1/4					1 3/8	1 7/16	1 5/8	1 5/8	1 3/4		1 15/16	2	2 3/16	2 7/16	2 15/16	47.3
80BS57	57	BS	18.730	18.153	2	5 1/4					1 3/8	1 7/16	1 5/8	1 5/8	1 3/4		1 15/16	2	2 3/16	2 7/16	2 15/16	48.9
80BS58	58	BS	19.040	18.471	2	5 1/4					1 3/8	1 7/16	1 5/8	1 5/8	1 3/4		1 15/16	2	2 3/16	2 7/16	2 15/16	50.6
80BS59	59	BS	19.360	18.789	2	5 1/4					1 3/8	1 7/16	1 5/8	1 5/8	1 3/4		1 15/16	2	2 3/16	2 7/16	2 15/16	52.2
80BS60	60	BS	19.680	19.107	2	5 1/4					1 3/8	1 7/16	1 5/8	1 5/8	1 3/4		1 15/16	2	2 3/16	2 7/16	2 15/16	58.8

Hub diameters vary to suit different bore sizes
 * W = Winch sprockets --KW 5/16 X 5/32 -- S.S. At 90°
 Keyway is on centerline of tooth.

SPROCKETS FOR No.80 PITCH (1" ANSI) CHAIN

STEEL

1" PITCH



TYPE - C

[SINGLE TYPE C]

SPROCKETS FOR No.80 PITCH (1" ANSI) CHAIN									
PART NUMBER	NO. OF TEETH	DIAMETERS		BORE RANGE			DIMENSIONS		WEIGHT LBS.
		O.D.	P.D.	MIN	MAX	STOCK BORE	HUB DIA	LENGTH THRU	
80C11	11	4.010	3.549	1	1 5/8	1	2 29/32*	2 3/8	3.87
80C12	12	4.330	3.864	1	1 7/8	1	3 1/8*	2 3/8	4.31
80C13	13	4.660	4.179	1	2	1	3 1/64	2 3/8	5.32
80C14	14	4.980	4.494	1	2 1/4	1	3 11/32	2 3/8	6.44
80C15	15	5.300	4.810	1	2 1/2	1	3 13/16	2 3/8	7.75
80C16	16	5.630	5.126	1	2 3/4	1	4	2 3/8	8.81

*Has recessed groove in hub for chain clearance.maximum bores shown will accommodate standard keyseat