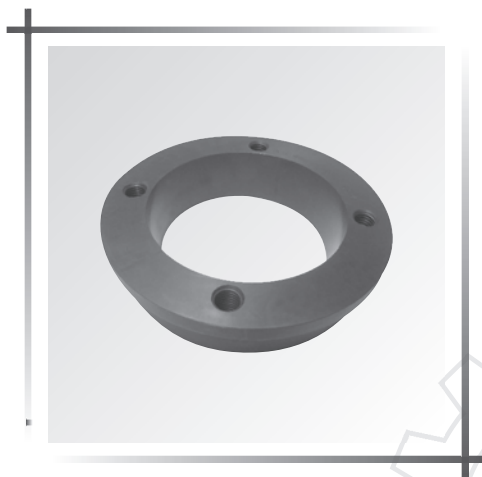
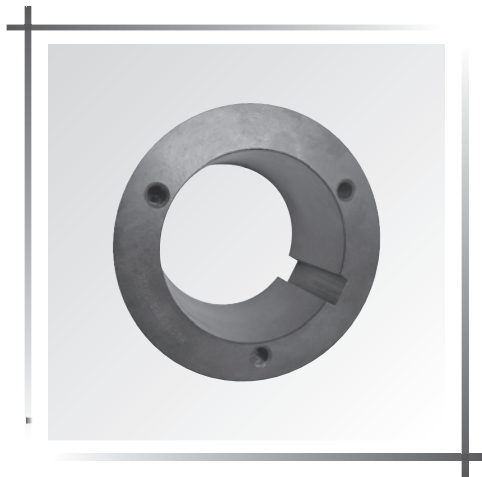
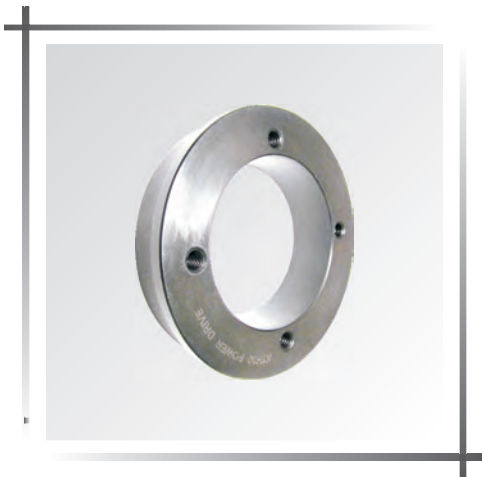
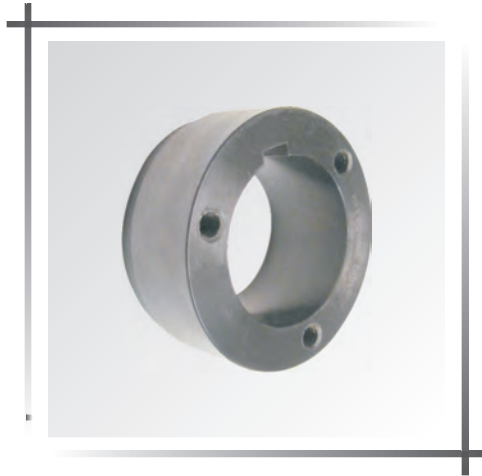
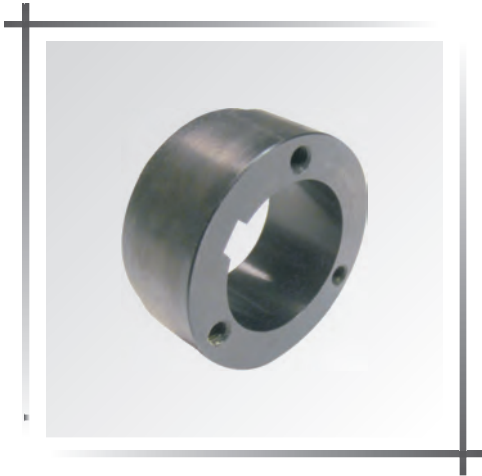


HUBS



HUBS

All Hubs are Machined Steel with black oxide finish.

Additionally:-

Split Taper Weld On Hubs are:

- Manufactured to accept Split Taper (PST) Bushings
- Ideal for use with plate sprockets

Type “B” Hubs are:

- Provided with minimum plain bore
- Ideal for applications which require custom bore

PQD Weld On Hubs are:

- Manufactured to accept PQD style Bushings
- Ideal for use with plate sprockets

XT[®] Weld On Hubs are:

- Manufactured to accept XT[®] style Bushings
- Used in conveyor pulley end disc

HE[®] Weld On Hubs are:

- Manufactured to accept HE[®] style Bushings
- Used in conveyor pulley end disc

HE[®] Wing Weld On Hubs are:

- Manufactured to accept HE[®] style Bushings
- Used in conveyor wing pulley end disc

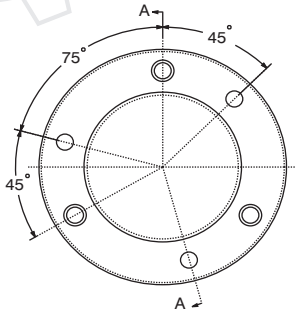
Taper Lock Weld On Hubs:

- Manufactured to accept Taper Lock (TL[®]) Bushings
- Ideal for use with plate sprockets

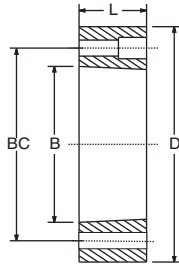
QUICK DETACHABLE (PQD) WELD-ON HUBS

STEEL

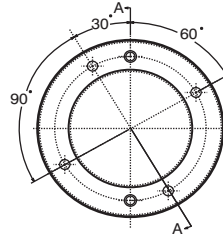
HUB



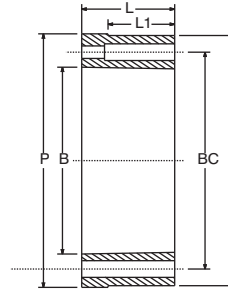
TYPE H-JA TO H-J



TYPE 1



TYPE H-M TO H-P



TYPE 2



QUICK DETACHABLE (PQD) WELD-ON HUBS

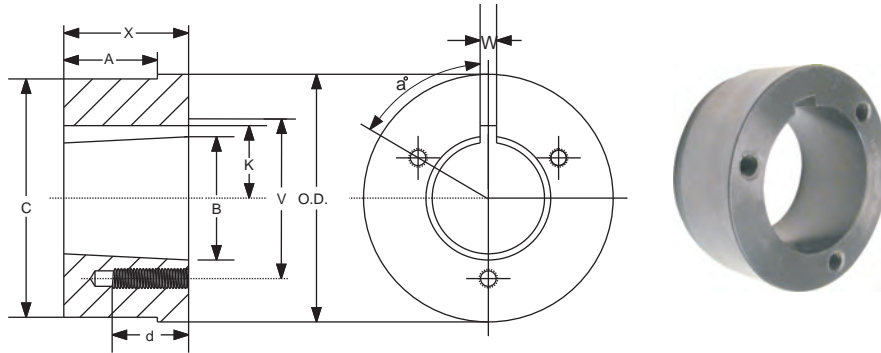
PART NO.	BUSHING	TYPE	DIMENSIONS							WGT. LBS.
			D*	L	B	P	L1	BC	BORE RANGE	
H-JA	JA	1	2.250	0.56	1.375	-	-	1 21/32	1/2 -1 1/4	0.4
H-SH	SH	1	3.000	0.81	1.871	-	-	2 1/4	1/2 -1 11/16	1.0
H-SDS	SDS	1	3.500	0.75	2.188	-	-	2 11/16	1/2 -2	1.2
H-SK	SK	1	4.375	1.25	2.813	-	-	3 5/16	1/2 -2 5/8	3.0
H-SF	SF	1	5.000	1.25	3.125	-	-	3 7/8	1/2 -2 15/16	4.0
H-E	E	1	6.250	1.63	3.834	-	-	5	7/8 -3 1/2	8.3
H-F	F	1	7.000	2.50	4.438	-	-	5 5/8	1 -4	12.5
H-J	J	1	7.750	3.19	5.148	-	-	6 1/4	1 7/16 - 4 1/2	22.7
H-M	M	2	9.250	5.19	6.494	9.50	3.56	7 7/8	2 -5 1/2	50.0
H-N	N	2	10.250	6.25	6.992	10.50	4.50	8 1/2	2 3/4 - 6	77.0
H-P	P	2	13.000	7.25	8.240	-	-	10	2 15/16 - 7	155.0

MOUNTING: TYPE 1: STANDARD AND REVERSE MOUNT TYPE: 2 STANDARD MOUNT ONLY

SPLIT TAPER (PST) WELD ON HUB

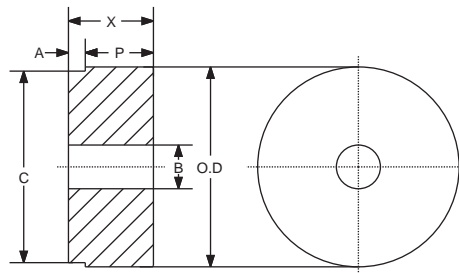
STEEL

HUB



STEEL HUBS FOR SPLIT TAPER BUSHINGS

PART NO.	BUSHING	DIMENSIONS									TAPPED HOLES			WT. LBS.
		O.D.	A	B	C	K	V	W	X	a	d	No.	SIZE	
HG1	G	2	0.174	1.168	1.875	-	1 9/16	-	5/8	-	5/8	2	1/4 -20	0.40
HH1	H	2 1/2	0.174	1.621	2.375	-	2	-	7/8	-	7/8	2	1/4 -20	0.60
HCH1	H	2 1/2	0.625	1.621	2.375	-	2	-	7/8	-	7/8	2	1/4 -20	0.70
HP1	P1	3	0.292	1.9375	2.875	1 3/32	2 7/16	3/8	1 5/16	60°	5/8	3	5/16 -18	1.40
HCP1	P1	3	1.000	1.9375	2.875	1 3/32	2 7/16	3/8	1 5/16	60	5/8	3	5/16 -18	1.10
HP2	P2	3	1.100	1.9375	2.875	1 3/32	2 7/16	3/8	2 5/16	60	5/8	3	5/16 -18	2.50
HB1	B	3 7/8	0.292	2.623	3.750	1 7/16	3 1/8	1/2	1 5/16	60	13/16	3	5/16 -18	2.30
HB2	B	4 1/2	0.709	2.623	4.375	1 7/16	3 1/8	1/2	1 3/4	60	13/16	3	5/16 -18	4.70
HQ1	Q1	4 1/2	0.709	2.875	4.375	1 9/16	3 3/8	1/2	1 3/4	60	7/8	3	3/8 -16	4.40
HQC1	Q1	4 1/2	1.250	2.875	4.375	1 9/16	3 3/8	1/2	1 3/4	60	7/8	3	3/8 -16	4.40
HQ2	Q2	4 1/2	1.606	2.875	4.375	1 9/16	3 3/8	1/2	2 3/4	60	7/8	3	3/8 -16	6.90
HR1	R1	5 3/4	0.709	4.000	5.625	2 3/16	4 5/8	3/4	2	60	1 1/8	3	3/8 -16	7.30
HR2	R2	5 3/4	1.606	4.000	5.625	2 3/16	4 5/8	3/4	4	60	1 1/8	3	3/8 -16	15.40
HS1	S1	6 3/4	0.946	4.625	6.500	2 9/16	5 3/8	3/4	3 5/16	60	1 5/8	3	1/2 -13	17.30
HS2	S2	6 3/4	2.963	4.625	6.500	2 9/16	5 3/8	3/4	5 11/16	60	1 5/8	3	1/2 -13	30.40
HUO	Uo	8 1/2	2.000	6.000	8.250	3 1/4	7	1 1/4	3 3/4	60	2	3	5/8 -11	32.00
HU1	U1	8 1/2	2.963	6.000	8.250	3 1/4	7	1 1/4	5 5/8	60	1 3/4	3	5/8 -11	44.60
HU2	U2	8 1/2	6.016	6.000	8.250	3 1/4	7	1 1/4	8 5/8	60	1 3/4	3	5/8 -11	69.00
HW1	W1	12 1/2	2.963	8.500	12.250	4 9/16	10	1 1/4	6 3/8	22 1/2	1 3/4	4	3/4 -10	130.00



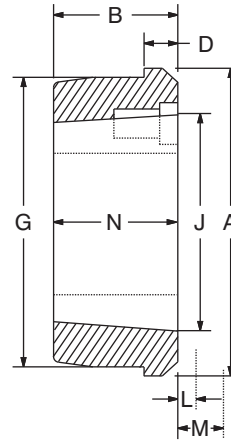
TYPE "B" STEEL HUB

PART NO.	DIMENSIONS					BORE		WGT. LBS.
	O.D.	A	C	P	X	STOCK	MAX	
HB40	3	0.281	2.875	27/32	1 1/8	1/2	1 7/8	2.3
HB50	3 1/4	0.344	3.125	1 1/32	1 3/8	5/8	2 1/4	3.0
HB60	4	0.469	3.875	1 1/32	1 1/2	5/8	2 3/8	5.0
HB80	5	0.563	4.875	1 1/2	2 1/16	3/4	3	11.1
HB100	5 1/4	0.688	5.125	2 1/16	2 3/4	1	3 1/4	16.3

TAPER LOCK (TL®) WELD-ON HUBS

STEEL

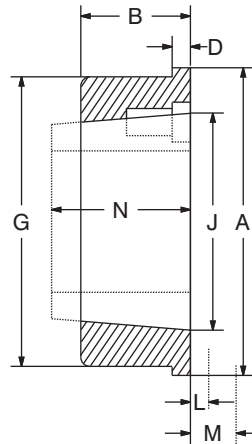
HUB



TYPE W/WA

PART NO./ (HUB NO.)	BUSHING	MAX. BORE	DIMENSIONS								WGT. LBS.
			A	B+	D	G	J. REF	L++	M**	N	
WA12	1215	1 - 1/4	2.88	1.50	0.63	2.500	1.88	1.38	1.63	1.50	1.2
WA16	1615	1 - 11/16	3.25	1.50	0.63	2.675	2.25	1.38	1.63	1.50	1.3
WA25	2517	2 - 11/16	4.88	1.75	0.75	2.575	3.38	1.63	2.25	1.75	3.9
WA30	3030	3 - 1/4	5.50	3.00	0.75	5.125	4.25	1.81	2.69	3.00	8.6
WA35	3535	3 - 15/16	6.75	3.50	1.00	6.250	5.00	2.00	3.33	3.50	15.0
WA40	4040	4 - 7/16	7.75	4.00	1.00	7.250	5.75	2.38	4.13	4.00	29.0
WA45	4545	4 - 15/16	8.75	4.50	1.00	8.000	6.38	2.63	4.75	4.50	42.0
WA50	5050	5	9.50	5.00	1.00	8.750	7.00	2.19	5.25	5.00	57.0

++ WRENCH CLEARANCE REQUIRED TO INSTALL BUSHING. ** WRENCH CLEARANCE REQUIRED TO REMOVE BUSHINGS.



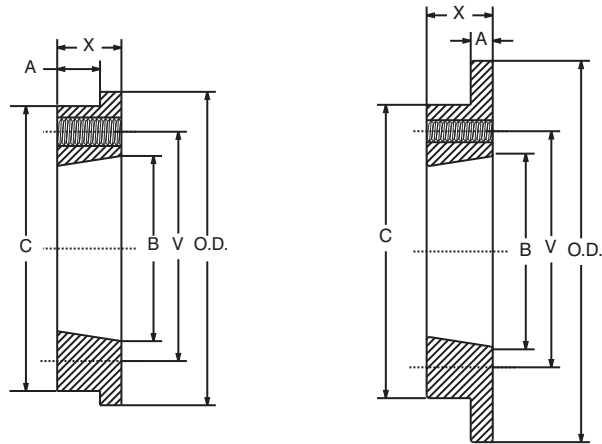
TYPE K

PART NO./ (HUB NO.)	BUSHING	MAX. BORE	DIMENSIONS								WGT. LBS.
			A	B+	D	G	J. REF	L++	M**	N	
K25	2517	2-11/16	4.88	1.50	0.38	4.375*	3.38	1.63	2.25	1.75	3.6
K30	3020	3- 1/4	5.50	1.63	0.38	5.125*	4.25	1.81	2.69	2.00	7.8
K35	3535	3-15/16	6.75	1.63	0.75	6.250	5.00	2.00	3.33	3.50	9.8
K40	4040	4- 7/16	7.75	2.13	0.50	7.250*	5.75	2.63	4.13	4.00	10.8
K45	4545	4-15/16	8.50	2.63	0.63	8.000*	6.83	2.63	4.75	4.50	15.2
K50	5050	5	9.25	4.88	0.63	8.750@	7.00	2.81	5.25	5.00	29

++ WRENCH CLEARANCE REQUIRED TO INSTALL BUSHING. ** WRENCH CLEARANCE REQUIRED TO REMOVE BUSHINGS.

XT[®] HUB FOR CONVEYOR PULLEYS

STEEL



TYPE 1

TYPE 2

HUB



XT[®] HUB SPECIFICATIONS

TYPE 1- HUBS

PART NO.	FOR BUSHING	DIMENSIONS							TAPPED HOLES		WT. LBS.
		O.D.	A	B	C	V	X	d	NO.	SIZE	
XTH15	XTB15	3.1900	7/16	2.000	2.8750	2 7/16	5/8	5/8	4	1/4 -20NC	0.70
XTH20	XTB20	4.0650	9/16	2.688	3.8125	3 3/16	13/16	13/16	4	5/16-18NC	1.50
XTH25	XTB25	4.6900	13/16	3.188	4.3750	3 3/4	1 1/8	1 1/8	4	3/8 -16NC	2.60
XTH30	XTB30	5.9400	7/8	3.875	5.7500	4 9/16	1 1/4	1 1/16	4	7/16-14NC	4.10
XTH35	XTB35	6.5650	1 1/16	4.688	6.3450	5 7/16	1 1/2	1 1/4	4	1/2 -13NC	6.60
XTH40	XTB40	7.5625	1 1/4	5.313	7.2500	6 1/8	1 3/4	1 3/4	4	9/16-12NC	10.70
XTH45	XTB45	8.3150	1 1/2	5.938	8.0000	6 7/8	2 1/8	1 3/8	4	5/8 -11NC	15.40
XTH50	XTB50	9.9400	1 3/4	7.250	9.5625	8 5/16	2 1/2	1 9/16	4	3/4 -10NC	24.90
XTH60	XTB60	11.6900	1 15/16	8.625	11.2500	9 7/8	2 3/4	1 3/4	4	7/8 - 9NC	36.40
XTH70	XTB70	13.6275	2 3/16	10.000	13.1875	11 9/16	3 1/8	1 5/8	4	1 - 8NC	57.70
XTH80	XTB80	14.9400	2 7/16	11.125	14.6250	12 7/8	3 7/16	1 15/16	4	1 1/8 - 7NC	75.60
XTH100	XTB100	17.9400	3	13.688	17.5000	15 9/16	4 1/8	2 3/16	6	1 1/8 - 7NC	122.00
XTH120	XTB120	20.9400	3 1/2	16.188	20.5000	18 3/16	4 13/16	2	8	1 1/8 - 7NC	189.00

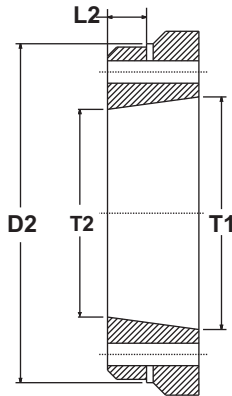
XT[®] HUB SPECIFICATIONS

TYPE 2- HUBS

PART NO.	FOR BUSHING	DIMENSIONS							TAPPED HOLES		WT. LBS.
		O.D.	A	B	C	V	X	d	NO.	SIZE	
XTH15F4	XTB15	3.855	1/4	2.000	3.625	2 7/16	9/16	-	4	1/4 -20NC	1.20
XTH15F5	XTB15	4.805	1/4	2.000	4.625	2 7/16	9/16	-	4	5/16-18NC	1.70
XTH15F6	XTB15	5.815	1/4	2.000	5.500	2 7/16	9/16	-	4	3/8 -16NC	2.30
XTH15F8	XTB15	7.807	1/4	2.000	2.875	2 7/16	11/16	-	4	7/16-14NC	3.80
XTH20F5	XTB20	4.805	1/4	2.688	3.6875	3 3/16	13/16	-	4	1/2 -13NC	1.80
XTH20F6	XTB20	5.815	1/4	2.688	3.6875	3 3/16	13/16	-	4	9/16-12NC	2.40
XTH20F8	XTB20	7.807	1/4	2.688	3.6875	3 3/16	13/16	-	4	5/8 -11NC	3.90
XTH20F10	XTB20	9.827	5/16	2.688	3.6875	3 3/16	13/16	-	4	3/4 -10NC	7.00
XTH20F12	XTB20	11.847	5/16	2.688	3.6875	3 3/16	13/16	-	4	7/8 - 9NC	9.70
XTH25F6	XTB25	5.815	5/16	3.188	4.3125	3 3/4	1 1/8	-	4	1 - 8NC	3.40
XTH25F8	XTB25	7.807	5/16	3.188	4.3125	3 3/4	1 1/8	-	4	1 1/8 - 7NC	5.30
XTH25F10	XTB25	9.827	5/16	3.188	4.3125	3 3/4	1 1/8	-	4	1 1/8 - 7NC	7.80
XTH25F12	XTB25	11.847	5/16	3.188	4.3125	3 3/4	1 1/8	-	4	1 1/8 - 7NC	10.50

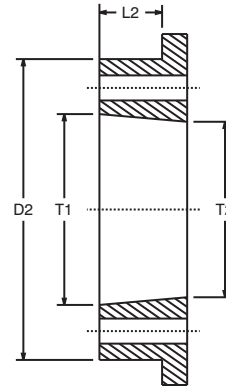
HE[®] HUB FOR CONVEY OR PULLEYS

STEEL



HE WING HUB

HE HUB



HE WELD ON HUB

HE WING HUB DIMENSION CHART

PART NO.	L2	D2	T1	T2	TAP HOLE
HE-25WH	0.38	4.530	3.310	3.130	3/8 -16(4 holes eq spcd)
HE-30WH	0.44	5.100	3.919	3.680	1/2 -13(4 holes eq spcd)
HE-35WH	0.75	6.260	4.730	4.370	9/16-12(4 holes eq spcd)
HE-40WH	0.75	7.670	5.434	5.070	5/8 -11(4 holes eq spcd)
HE-45WH	0.75	8.420	6.121	5.760	5/8 -11(6 holes eq spcd)
HE-50WH	1.00	9.670	6.684	6.260	3/4 -10(6 holes eq spcd)

WELD ON HUB DIMENSION CHART

PART NO.	L2	D2	T1	T2	TAP HOLE
HE-25	0.05	4.70	3.306	3.13	3/8 -16(4 holes eq spcd)
HE-30	0.75	5.75	3.915	3.68	1/2 -13(4 holes eq spcd)
HE-35	1.25	6.75	4.726	4.37	9/16-12(4 holes eq spcd)
HE-40	1.25	8.00	5.430	5.07	5/8 -11(4 holes eq spcd)
HE-45	1.25	8.75	6.117	5.76	5/8 -11(6 holes eq spcd)
HE-50	1.50	10.00	6.680	6.26	3/4 -10(6 holes eq spcd)
HE-60	1.50	11.75	7.804	7.38	7/8 - 9(6 holes eq spcd)
HE-70	1.63	13.50	8.988	8.51	1 - 8(6 HOLES EQ SPCD)
HE-80	2.00	16.00	10.363	9.76	1 1/8 - 7(6 HOLES EQ SPCD)