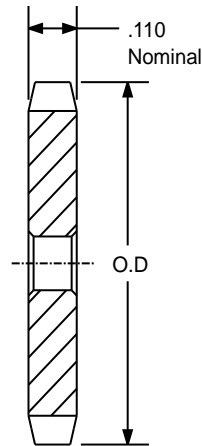


SPROCKETS FOR No.25 PITCH (1/4" ANSI) CHAIN

STEEL

1/4" PITCH



TYPE - A

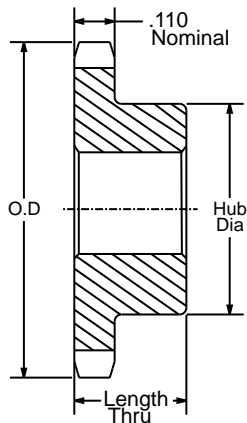
SPROCKETS FOR No.25 PITCH (1/4" ANSI) CHAIN						
PART NUMBER	NO. OF TEETH	TYPE	DIAMETERS		STOCK BORE	WEIGHT
			O.D.	P.D.		
25A18	18	A	1.568	1.440	1/4	0.04
25A19	19	A	1.648	1.519	1/4	0.04
25A20	20	A	1.729	1.598	1/4	0.04
25A21	21	A	1.809	1.678	3/8	0.04
25A22	22	A	1.889	1.757	3/8	0.06
25A23	23	A	1.969	1.836	3/8	0.06
25A24	24	A	2.049	1.915	3/8	0.08
25A25	25	A	2.129	1.995	3/8	0.08
25A26	26	A	2.209	2.074	3/8	0.09
25A28	28	A	2.369	2.233	3/8	0.10
25A30	30	A	2.529	2.392	3/8	0.12
25A32	32	A	2.688	2.551	3/8	0.14
25A35	35	A	2.928	2.789	3/8	0.16
25A36	36	A	3.008	2.869	3/8	0.18
25A40	40	A	3.327	3.187	1/2	0.20
25A42	42	A	3.486	3.345	1/2	0.24
25A45	45	A	3.725	3.584	1/2	0.25
25A48	48	A	3.964	3.823	1/2	0.32
25A54	54	A	4.442	4.300	1/2	0.38
25A60	60	A	4.920	4.777	1/2	0.54
25A72	72	A	5.876	5.732	1/2	0.74

Maximum bores shown will accommodate standard keyseats and setscrew over keyseat. Slightly larger bores are possible with no keyseat, shallow keyseat, or setscrew at angle to keyseats.

SPROCKETS FOR No.25 PITCH (1/4" ANSI) CHAIN

STEEL

1/4" PITCH



TYPE - B

SPROCKETS FOR No.25 PITCH (1/4" ANSI) CHAIN									
PART NUMBER	NO. OF TEETH	TYPE	DIAMETERS		BORE RANGE		DIMENSIONS		WEIGHT LBS.
			O.D.	P.D.	MIN	MAX	HUB DIAMETER	LENGTH THRU	
25B9	9	B	0.837	0.731	1/4	1/4	7/16	1/2	0.03
25B10	10	B	0.919	0.809	1/4	1/4	1/2	1/2	0.03
25B11	11	B	1.002	0.887	1/4	5/16	9/16	1/2	0.04
25B12	12	B	1.083	0.966	1/4	3/8	5/8	1/2	0.06
25B13	13	B	1.167	1.045	1/4	7/16	23/32	1/2	0.07
25B14	14	B	1.246	1.124	1/4	9/16	13/16	1/2	0.08
25B15	15	B	1.326	1.203	1/4	9/16	57/64	1/2	0.10
25B16	16	B	1.407	1.282	1/4	9/16	31/32	1/2	0.12
25B17	17	B	1.487	1.361	1/4	5/8	1 1/32	1/2	0.14
25B18	18	B	1.568	1.440	1/4	3/4	1 1/8	1/2	0.16
25B19	19	B	1.648	1.519	1/4	13/16	1 7/32	1/2	0.19
25B20	20	B	1.729	1.598	1/4	7/8	1 9/32	5/8	0.25
25B21	21	B	1.809	1.678	1/4	7/8	1 3/8	5/8	0.28
25B22	22	B	1.889	1.757	1/4	15/16	1 7/16	5/8	0.31
25B23	23	B	1.969	1.836	1/4	1	1 1/2	5/8	0.32
25B24	24	B	2.049	1.915	3/8	1	1 1/2	5/8	0.33
25B25	25	B	2.129	1.995	3/8	1	1 1/2	5/8	0.34
25B26	26	B	2.209	2.074	3/8	1	1 1/2	5/8	0.35
25B28	28	B	2.369	2.233	3/8	1	1 1/2	5/8	0.36
25B30	30	B	2.529	2.392	3/8	1	1 1/2	5/8	0.38
25B32	32	B	2.688	2.551	3/8	1	1 1/2	5/8	0.40
25B36	36	B	3.008	2.869	3/8	1	1 1/2	3/4	0.50
25B40	40	B	3.327	3.187	1/2	1 3/8	2	3/4	0.53
25B45	45	B	3.725	3.584	1/2	1 3/8	2	3/4	0.56
25B48	48	B	3.964	3.823	1/2	1 3/8	2	3/4	0.56
25B54	54	B	4.442	4.300	1/2	1 3/8	2	3/4	1.00
25B60	60	B	4.920	4.777	1/2	1 3/8	2	3/4	1.10
25B70	70	B	5.717	5.572	1/2	1 3/8	2	3/4	1.25
25B72	72	B	5.876	5.732	1/2	1 3/8	2	3/4	1.30

Maximum bores shown will accommodate standard keyseats and setscrew over keyseat. Slightly larger bores are possible with no keyseat, shallow keyseat, or setscrew at angle to keyseats.