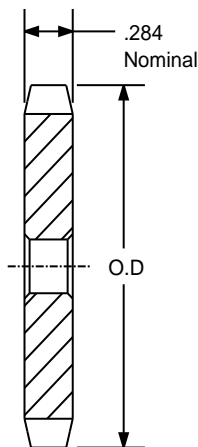


SPROCKETS FOR No.40 PITCH (1/2" ANSI) CHAIN

STEEL

1/2" PITCH



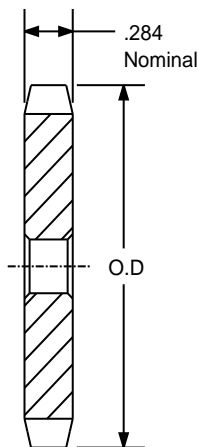
TYPE - A

SPROCKETS FOR No.40 PITCH (1/2" ANSI) CHAIN						
PART NUMBER	NO. OF TEETH	TYPE	DIAMETERS		STOCK BORE	WEIGHT
			O.D.	P.D.		
40A12	12	A	2.170	1.932	1/2	0.18
40A13	13	A	2.330	2.089	1/2	0.22
40A14	14	A	2.490	2.247	1/2	0.26
40A15	15	A	2.650	2.405	5/8	0.30
40A16	16	A	2.810	2.563	5/8	0.34
40A17	17	A	2.980	2.721	5/8	0.36
40A18	18	A	3.140	2.879	5/8	0.44
40A19	19	A	3.300	3.038	5/8	0.46
40A20	20	A	3.460	3.196	5/8	0.56
40A21	21	A	3.620	3.355	5/8	0.58
40A22	22	A	3.780	3.513	5/8	0.66
40A23	23	A	3.940	3.672	5/8	0.72
40A24	24	A	4.100	3.831	5/8	0.82
40A25	25	A	4.260	3.989	5/8	0.88
40A26	26	A	4.420	4.148	5/8	0.94
40A27	27	A	4.580	4.307	5/8	0.98
40A28	28	A	4.740	4.466	5/8	1.10
40A29	29	A	4.900	4.625	19/32	1.22
40A30	30	A	5.060	4.783	19/32	1.26
40A31	31	A	5.220	4.942	19/32	1.40
40A32	32	A	5.380	5.101	19/32	1.48
40A33	33	A	5.540	5.260	19/32	1.56
40A34	34	A	5.700	5.419	19/32	1.64
40A35	35	A	5.860	5.578	19/32	1.70
40A36	36	A	6.020	5.737	19/32	1.84
40A37	37	A	6.180	5.895	19/32	1.92
40A38	38	A	6.330	6.055	19/32	2.00
40A39	39	A	6.490	6.213	19/32	2.02
40A40	40	A	6.650	6.373	23/32	2.22

SPROCKETS FOR No.40 PITCH (1/2" ANSI) CHAIN

STEEL

1/2" PITCH



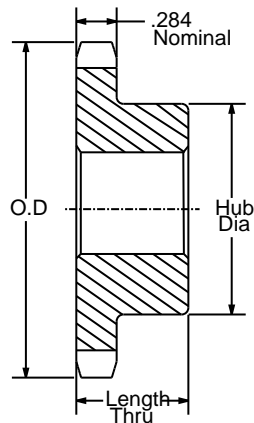
TYPE - A

SPROCKETS FOR No.40 PITCH (1/2" ANSI) CHAIN						
PART NUMBER	NO. OF TEETH	TYPE	DIAMETERS		STOCK BORE	WEIGHT
			O.D.	P.D.		
40A41	41	A	6.810	6.532	23/32	2.42
40A42	42	A	6.970	6.691	23/32	2.50
40A43	43	A	7.130	6.850	23/32	2.80
40A44	44	A	7.290	7.009	23/32	2.85
40A45	45	A	7.450	7.168	23/32	3.15
40A46	46	A	7.610	7.326	23/32	3.26
40A47	47	A	7.770	7.486	23/32	3.32
40A48	48	A	7.930	7.645	23/32	3.22
40A49	49	A	8.090	7.803	23/32	3.44
40A50	50	A	8.250	7.963	23/32	3.62
40A51	51	A	8.410	8.122	23/32	3.94
40A52	52	A	8.570	8.281	23/32	4.08
40A53	53	A	8.730	8.440	23/32	4.04
40A54	54	A	8.890	8.599	23/32	4.44
40A55	55	A	9.040	8.758	23/32	4.54
40A56	56	A	9.200	8.917	23/32	4.84
40A57	57	A	9.360	9.076	23/32	5.00
40A58	58	A	9.520	9.235	23/32	5.12
40A59	59	A	9.680	9.394	23/32	5.30
40A60	60	A	9.840	9.554	23/32	5.48
40A70	70	A	11.430	11.145	23/32	7.24
40A72	72	A	11.750	11.463	23/32	7.74
40A80	80	A	13.030	12.736	23/32	10.20
40A84	84	A	13.660	13.372	23/32	10.07
40A96	96	A	15.570	15.281	15/16	12.15
40A112	112	A	18.120	17.828	15/16	20.00

SPROCKETS FOR No.40 PITCH (1/2" ANSI) CHAIN

STEEL

1/2" PITCH



TYPE - B

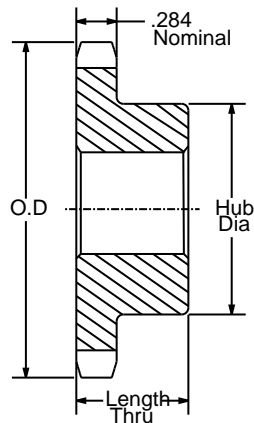
SPROCKETS FOR No.40 PITCH (1/2" ANSI) CHAIN									
PART NUMBER	NO. OF TEETH	TYPE	DIAMETERS		BORE RANGE		DIMENSIONS		WEIGHT LBS.
			O.D.	P.D.	MIN	MAX	HUB DIAMETER	LENGTH THRU	
40B8	8	B	1.500	1.307	1/2	1/2	31/32*	7/8	0.18
40B9	9	B	1.670	1.462	1/2	9/16	1 1/16*	7/8	0.20
40B10	10	B	1.840	1.618	1/2	3/4	1 1/4*	7/8	0.27
40B11	11	B	2.000	1.775	1/2	7/8	1 3/8*	7/8	0.35
40B12	12	B	2.170	1.932	1/2	1	1 9/16*	7/8	0.45
40B13	13	B	2.330	2.089	1/2	1 1/16	1 9/16	7/8	0.50
40B14	14	B	2.490	2.247	1/2	1 1/8	1 11/16	7/8	0.59
40B15	15	B	2.650	2.405	1/2	1 1/4	1 13/16	7/8	0.70
40B16	16	B	2.810	2.563	5/8	1 3/8	2	7/8	0.79
40B17	17	B	2.980	2.721	5/8	1 7/16	2 1/8	1	1.04
40B18	18	B	3.140	2.879	5/8	1 1/2	2 5/16	1	1.22
40B19	19	B	3.300	3.038	5/8	1 3/4	2 1/2	1	1.43
40B20	20	B	3.460	3.196	5/8	1 7/8	2 5/8	1	1.56
40B21	21	B	3.620	3.355	5/8	1 7/8	2 3/4	1	1.73
40B22	22	B	3.780	3.513	5/8	1 7/8	2 7/8	1	1.96
40B23	23	B	3.940	3.672	5/8	2	3	1	2.13
40B24	24	B	4.100	3.831	5/8	2 1/4	3 1/4	1	2.41
40B25	25	B	4.260	3.989	5/8	2 1/4	3 1/4	1	2.54
40B26	26	B	4.420	4.148	5/8	2 1/4	3 1/4	1	2.58
40B27	27	B	4.580	4.307	5/8	2 1/4	3 1/4	1	2.66
40B28	28	B	4.740	4.466	5/8	2 1/4	3 1/4	1	2.73
40B29	29	B	4.900	4.625	5/8	2 1/4	3 1/4	1	2.80
40B30	30	B	5.060	4.783	5/8	2 1/4	3 1/4	1	2.98
40B31	31	B	5.220	4.942	5/8	2 1/4	3 1/4	1	3.10
40B32	32	B	5.380	5.101	5/8	2 1/4	3 1/4	1	3.16
40B33	33	B	5.540	5.260	5/8	2 1/4	3 1/4	1	3.22
40B34	34	B	5.700	5.419	5/8	2 1/4	3 1/4	1	3.30
40B35	35	B	5.860	5.578	5/8	2 1/4	3 1/4	1	3.46
40B36	36	B	6.020	5.737	5/8	2 1/4	3 1/4	1	3.58
40B37	37	B	6.180	5.895	5/8	2 1/4	3 1/4	1	3.62
40B38	38	B	6.330	6.055	5/8	2 1/4	3 1/4	1	3.70
40B39	39	B	6.490	6.213	5/8	2 1/4	3 1/4	1	3.76
40B40	40	B	6.650	6.373	3/4	2 3/8	3 1/2	1 1/8	4.69

* Has recessed groove in hub for chain clearance.

SPROCKETS FOR No.40 PITCH (1/2" ANSI) CHAIN

STEEL

1/2" PITCH



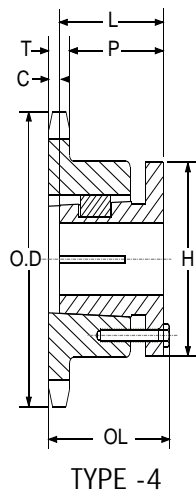
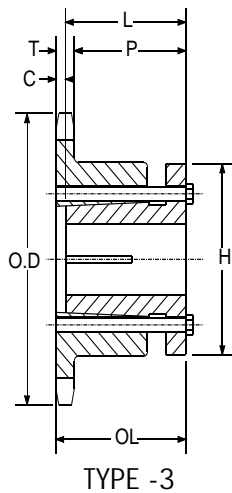
TYPE - B

SPROCKETS FOR No.40 PITCH (1/2" ANSI) CHAIN									
PART NUMBER	NO. OF TEETH	TYPE	DIAMETERS		BORE RANGE		DIMENSIONS		WEIGHT LBS.
			O.D.	P.D.	MIN	MAX	HUB DIAMETER	LENGTH THRU	
40B41	41	B	6.810	6.532	3/4	2 3/8	3 1/2	1 1/8	4.76
40B42	42	B	6.970	6.691	3/4	2 3/8	3 1/2	1 1/8	4.82
40B43	43	B	7.130	6.850	3/4	2 3/8	3 1/2	1 1/8	5.12
40B44	44	B	7.290	7.009	3/4	2 3/8	3 1/2	1 1/8	5.15
40B45	45	B	7.450	7.168	3/4	2 3/8	3 1/2	1 1/8	5.30
40B46	46	B	7.610	7.326	3/4	2 3/8	3 1/2	1 1/8	5.57
40B47	47	B	7.770	7.486	3/4	2 3/8	3 1/2	1 1/8	5.44
40B48	48	B	7.930	7.645	3/4	2 3/8	3 1/2	1 1/8	5.84
40B49	49	B	8.090	7.803	3/4	2 3/8	3 1/2	1 1/8	5.90
40B50	50	B	8.250	7.963	3/4	2 3/8	3 1/2	1 1/8	5.96
40B51	51	B	8.410	8.122	3/4	2 3/8	3 1/2	1 1/8	6.08
40B52	52	B	8.570	8.281	3/4	2 3/8	3 1/2	1 1/8	6.28
40B53	53	B	8.730	8.440	3/4	2 3/8	3 1/2	1 1/8	6.33
40B54	54	B	8.890	8.599	3/4	2 3/8	3 1/2	1 1/8	6.42
40B55	55	B	9.040	8.758	3/4	2 3/8	3 1/2	1 1/8	6.46
40B56	56	B	9.200	8.917	3/4	2 3/8	3 1/2	1 1/8	6.89
40B57	57	B	9.360	9.076	3/4	2 3/8	3 1/2	1 1/8	7.02
40B58	58	B	9.520	9.235	3/4	2 3/8	3 1/2	1 1/8	7.36
40B59	59	B	9.680	9.394	3/4	2 3/8	3 1/2	1 1/8	7.45
40B60	60	B	9.840	9.554	3/4	2 3/8	3 1/2	1 1/8	7.86
40B70	70	B	11.430	11.145	3/4	2 3/4	4	1 1/4	11.00
40B72	72	B	11.750	11.463	3/4	2 3/4	4	1 1/4	11.50
40B80	80	B	13.030	12.736	3/4	2 3/4	4	1 1/4	13.40
40B84	84	B	13.660	13.372	3/4	2 3/4	4	1 1/4	14.04
40B96	96	B	15.570	15.281	1	2 3/4	4	1 1/4	17.56
40B112	112	B	18.120	17.828	1	2 3/4	4	1 1/4	22.56

SPROCKETS FOR No.40 PITCH (1 1/4" ANSI) CHAIN

STEEL

1 1/4" PITCH



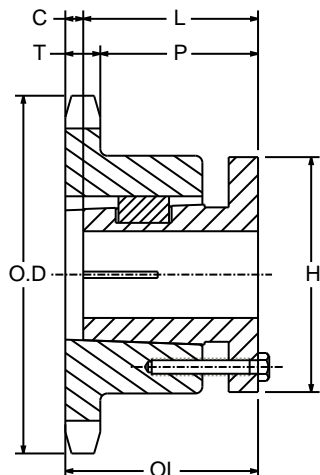
[SINGLE SPLIT BUSH]

SPROCKETS FOR No.40 PITCH (1 1/4" ANSI) CHAIN																
OLD PART NUMBER	NEW PART NUMBER	NO. OF TEETH	BUSHING	TYPE	DIAMETERS		BORE RANGE		DIMENSIONS						WEIGHT LBS.	
					O.D.	P.D.	MIN	MAX	T(NOM)	O.L.	L	P	C	H		
40G12	40ST12-G	12	G	3	2.170	1.932	3/8	1	0.284	1 1/2	1	1 1/32	5/16	2	0.30	
40G13	40ST13-G	13	G	3	2.300	2.089	3/8	1	0.284	1 1/2	1	1 1/32	5/16	2	0.40	
40G14	40ST14-G	14	G	3	2.490	2.247	3/8	1	0.284	1 1/2	1	1 1/32	5/16	2	0.50	
40H15	40ST15-H	15	H	3	2.650	2.405	3/8	1 1/2	0.284	1 19/32	1 1/4	1 1/8	5/32	2 1/2	0.50	
40G16	40ST16-G	16	G	3	2.800	2.563	3/8	1	0.284	1 1/4	1	25/32	1/16	2	0.40	
40H16	40ST16-H	16	H	3	2.800	2.563	3/8	1 1/2	0.284	1 19/32	1 1/4	1 1/8	5/32	2 1/2	0.60	
40H17	40ST17-H	17	H	3	2.960	2.721	3/8	1 1/2	0.284	1 1/2	1 1/4	1 1/32	1/16	2 1/2	0.60	
40H18	40ST18-H	18	H	3	3.140	2.879	3/8	1 1/2	0.284	1 1/2	1 1/4	1 1/32	1/16	2 1/2	0.70	
40P18	40ST18-P1	18	P1	4	3.140	2.879	1/2	1 3/4	0.284	2 3/16	1 15/16	1 21/32	0	3	1.20	
40H19	40ST19-H	19	H	3	3.300	3.038	3/8	1 1/2	0.284	1 1/2	1 1/4	1 1/32	1/16	2 1/2	0.80	
40P19	40ST20-P1	19	P1	4	3.300	3.038	1/2	1 3/4	0.284	2 3/16	1 15/16	1 21/32	0	3	1.30	
40H20	40ST20-H	20	H	3	3.450	3.196	3/8	1 1/2	0.284	1 1/2	1 1/4	1 1/32	1/16	2 1/2	0.80	
40P20	40ST20-P1	20	P1	4	3.450	3.196	1/2	1 3/4	0.284	2 3/16	1 15/16	1 21/32	0	3	1.30	
40H21	40ST21-H	21	H	3	3.620	3.355	3/8	1 1/2	0.284	1 1/2	1 1/4	1 1/32	1/16	2 1/2	0.90	
40P21	40ST21-P1	21	P1	4	3.620	3.355	1/2	1 3/4	0.284	2 3/16	1 15/16	1 21/32	0	3	1.50	
40H22	40ST22-H	22	H	3	3.750	3.513	3/8	1 1/2	0.284	1 1/2	1 1/4	1 1/32	1/16	2 1/2	0.90	
40P22	40ST22-P1	22	P1	4	3.750	3.513	1/2	1 3/4	0.284	2 3/16	1 15/16	1 21/32	0	3	0.60	
40H23	40ST23-H	23	H	3	3.940	3.672	3/8	1 1/2	0.284	1 1/2	1 1/4	1 1/32	1/16	2 1/2	1.00	
40P23	40ST23-P1	23	P1	4	3.940	3.672	1/2	1 3/4	0.284	2 3/16	1 15/16	1 21/32	0	3	1.70	
40H24	40ST24-H	24	H	3	4.100	3.813	3/8	1 1/2	0.284	1 1/2	1 1/4	1 1/32	1/16	2 1/2	1.20	
40P24	40ST24-P1	24	P1	4	4.100	3.813	1/2	1 3/4	0.284	2 3/16	1 15/16	1 21/32	0	3	1.80	
40H25	40ST25-H	25	H	3	4.260	3.989	3/8	1 1/2	0.284	1 1/2	1 1/4	1 1/32	1/16	2 1/2	1.30	
40P25	40ST25-P1	25	P1	4	4.260	3.989	1/2	1 3/4	0.284	2 3/16	1 15/16	1 21/32	0	3	2.00	
40H26	40ST26-H	26	H	3	4.420	4.148	3/8	1 1/2	0.284	1 1/2	1 1/4	1 1/32	1/16	2 1/2	1.40	
40P26	40ST26-H	26	P1	4	4.420	4.148	1/2	1 3/4	0.284	2 3/16	1 15/16	1 21/32	0	3	2.00	
40H27	40ST27-H	27	H	3	4.580	4.307	3/8	1 1/2	0.284	1 1/2	1 1/4	1 1/32	1/16	2 1/2	1.40	
40P27	40ST27-P1	27	P1	4	4.580	4.307	1/2	1 3/4	0.284	2 3/16	1 15/16	1 21/32	0	3	2.10	
40H28	40ST28-H	28	H	3	4.740	4.466	3/8	1 1/2	0.284	1 1/2	1 1/4	1 1/32	1/16	2 1/2	1.50	
40P28	40ST28-P1	28	P1	4	4.740	4.466	1/2	1 3/4	0.284	2 3/16	1 15/16	1 21/32	0	3	2.20	
40H29	40ST29-H	29	P1	4	4.900	4.625	1/2	1 3/4	0.284	2 3/16	1 15/16	1 21/32	0	3	2.30	
40H30	40ST30-H	30	H	3	5.060	4.783	3/8	1 1/2	0.284	1 1/2	1 1/4	1 1/32	1/16	2 1/2	1.60	
40P30	40ST30-P1	30	P1	4	5.060	4.783	1/2	1 3/4	0.284	2 3/16	1 15/16	1 21/32	0	3	2.40	
40P31	40ST31-P1	31	P1	4	5.220	4.942	1/2	1 3/4	0.284	2 3/16	1 15/16	1 21/32	0	3	2.50	
40P32	40ST32-P1	32	P1	4	5.380	5.101	1/2	1 3/4	0.284	2 3/16	1 15/16	1 21/32	0	3	2.60	
40P33	40ST33-P1	33	P1	4	5.540	5.260	1/2	1 3/4	0.284	2 3/16	1 15/16	1 21/32	0	3	2.60	

SPROCKETS FOR No.40 PITCH (1 1/4" ANSI) CHAIN

STEEL

1 1/4" PITCH



TYPE - 4

[SINGLE SPLIT BUSH]

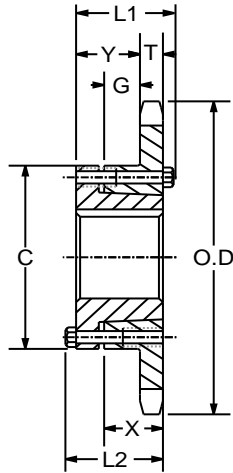
SPROCKETS FOR No.40 PITCH (1 1/4" ANSI) CHAIN

OLD PART NUMBER	NEW PART NUMBER	NO. OF TEETH	BUSHING	TYPE	DIAMETERS		BORE RANGE		DIMENSIONS						WEIGHT LBS.
					O.D.	P.D.	MIN	MAX	T(NOM)	O.L.	L	P	C	H	
40P34	40ST34-P1	34	P1	4	5.700	5.419	1/2	1 3/4	0.284	2 3/16	1 15/16	1 21/32	0	3	2.80
40P35	40ST35-P1	35	P1	4	5.860	5.578	1/2	1 3/4	0.284	2 3/16	1 15/16	1 21/32	0	3	2.90
40P36	40ST36-P1	36	P1	4	6.020	5.737	1/2	1 3/4	0.284	2 3/16	1 15/16	1 21/32	0	3	3.10
40P37	40ST37-P1	37	P1	4	6.180	5.896	1/2	1 3/4	0.284	2 3/16	1 15/16	1 21/32	0	3	3.30
40P38	40ST38-P1	38	P1	4	6.330	6.055	1/2	1 3/4	0.284	2 3/16	1 15/16	1 21/32	0	3	3.30
40P40	40ST40-P1	40	P1	4	6.650	6.373	1/2	1 3/4	0.284	2 3/16	1 15/16	1 21/32	0	3	3.50
40P41	40ST41-P1	41	P1	4	6.810	6.532	1/2	1 3/4	0.284	2 3/16	1 15/16	1 21/32	0	3	3.60
40P42	40ST42-P1	42	P1	4	6.970	6.691	1/2	1 3/4	0.284	2 3/16	1 15/16	1 21/32	0	3	3.90
40P44	40ST44-P1	44	P1	4	7.290	7.009	1/2	1 3/4	0.284	2 3/16	1 15/16	1 21/32	0	3	4.00
40P45	40ST45-P1	45	P1	4	7.450	7.168	1/2	1 3/4	0.284	2 3/16	1 15/16	1 21/32	0	3	4.20
40P47	40ST47-P1	47	P1	4	7.770	7.486	1/2	1 3/4	0.284	2 3/16	1 15/16	1 21/32	0	3	4.60
40P48	40ST48-P1	48	P1	4	7.930	7.645	1/2	1 3/4	0.284	2 3/16	1 15/16	1 21/32	0	3	4.80
40P50	40ST50-P1	50	P1	4	8.250	7.693	1/2	1 3/4	0.284	2 3/16	1 15/16	1 21/32	0	3	5.00
40P54	40ST54-P1	54	P1	4	8.890	8.599	1/2	1 3/4	0.284	2 3/16	1 15/16	1 21/32	0	3	5.50
40P56	40ST56-P1	56	P1	4	9.200	8.917	1/2	1 3/4	0.284	2 3/16	1 15/16	1 21/32	0	3	5.90
40P60	40ST60-P1	60	P1	4	9.840	9.554	1/2	1 3/4	0.284	2 3/16	1 15/16	1 21/32	0	3	6.60
40Q60	40ST60-Q1	60	Q1	4	9.840	9.554	3/4	2 11/16	0.284	2 25/32	2 1/2	2 7/32	0	4 1/8	8.80
40P70	40ST70-P1	70	P1	4	11.430	11.145	1/2	1 3/4	0.284	2 3/16	1 15/16	1 21/32	0	3	8.60
40Q70	40ST70-Q1	70	Q1	4	11.430	11.145	3/4	2 11/16	0.284	2 25/32	2 1/2	2 7/32	0	4 1/8	11.00
40Q72	40ST72-Q1	72	Q1	4	11.750	11.463	3/4	2 11/16	0.284	2 25/32	2 1/2	2 7/32	0	4 1/8	11.20
40Q80	40ST80-Q1	80	Q1	4	13.030	12.736	3/4	2 11/16	0.284	2 25/32	2 1/2	2 7/32	0	4 1/8	13.10
40Q84	40ST84-Q1	84	Q1	4	13.660	13.372	3/4	2 11/16	0.284	2 25/32	2 1/2	2 7/32	0	4 1/8	14.10
40Q96	40ST96-Q1	96	Q1	4	15.570	15.281	3/4	2 11/16	0.284	2 25/32	2 1/2	2 7/32	0	4 1/8	17.30
40Q112	40ST112-Q1	112	Q1	4	18.120	17.828	3/4	2 11/16	0.284	2 25/32	2 1/2	2 7/32	0	4 1/8	12.80

SPROCKETS FOR No.40 PITCH (1/2" ANSI) CHAIN

STEEL

1/2" PITCH



TYPE - QD-1



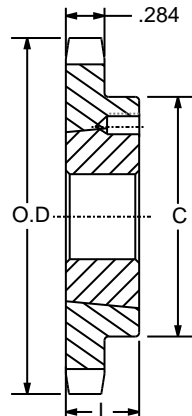
[SINGLE "QD" BUSH]

SPROCKETS FOR No.40 PITCH (1/2" ANSI) CHAIN																		
OLD PART NUMBER	NEW PART NUMBER	NO. OF TEETH	BUSHING	TYPE	DIAMETERS		BORE RANGE		DIMENSIONS							WEIGHT		
					O.D.	P.D.	MIN	MAX	L1	L2	C	Y	G	X	T(NOM)	WITH HUB	RIM ONLY	
40JA15	40QD15-JA	15	JA	QD-1	2.650	2.405	1/2	1 1/4	1 1/8	1 1/8	2 1/16	23/32	11/32	5/8	0.284	1.24	0.34	
40JA16	40QD16-JA	16	JA	QD-1	2.810	2.563	1/2	1 1/4	1 1/8	1 1/8	2 1/16	23/32	11/32	5/8	0.284	1.30	0.40	
40JA17	40QD17-JA	17	JA	QD-1	2.980	2.721	1/2	1 1/4	1 1/8	1 1/8	2 1/16	23/32	11/32	5/8	0.284	1.38	0.48	
40JA18	40QD18-JA	18	JA	QD-1	3.140	2.879	1/2	1 1/4	1 1/8	1 1/8	2 1/16	23/32	11/32	5/8	0.284	1.44	0.54	
40JA19	40QD19-JA	19	JA	QD-1	3.300	3.038	1/2	1 1/4	1 1/8	1 1/8	2 1/16	23/32	11/32	5/8	0.284	1.50	0.60	
40SH20	40QD20-SH	20	SH	QD-1	3.460	3.196	1/2	1 5/8	1 7/16	1 7/16	2 11/16	31/32	17/32	13/16	0.284	1.76	0.76	
40SH21	40QD21-SH	21	SH	QD-1	3.620	3.355	1/2	1 5/8	1 7/16	1 7/16	2 11/16	31/32	17/32	13/16	0.284	1.84	0.84	
40SH22	40QD22-SH	22	SH	QD-1	3.780	3.513	1/2	1 5/8	1 7/16	1 7/16	2 11/16	31/32	17/32	13/16	0.284	1.92	0.92	
40SH23	40QD23-SH	23	SH	QD-1	3.940	3.672	1/2	1 5/8	1 7/16	1 7/16	2 11/16	31/32	17/32	13/16	0.284	2.14	1.14	
40SH24	40QD24-SH	24	SH	QD-1	4.100	3.831	1/2	1 5/8	1 7/16	1 7/16	2 11/16	31/32	17/32	13/16	0.284	2.22	1.22	
40SH25	40QD25-SH	25	SH	QD-1	4.260	3.989	1/2	1 5/8	1 7/16	1 7/16	2 11/16	31/32	17/32	13/16	0.284	2.30	1.30	
40SH26	40QD26-SH	26	SH	QD-1	4.420	4.148	1/2	1 5/8	1 7/16	1 7/16	2 11/16	31/32	17/32	13/16	0.284	2.44	1.44	
40SH27	40QD27-SH	27	SH	QD-1	4.580	4.307	1/2	1 5/8	1 7/16	1 7/16	2 11/16	31/32	17/32	13/16	0.284	2.46	1.46	
40SH28	40QD28-SH	28	SH	QD-1	4.740	4.466	1/2	1 5/8	1 7/16	1 7/16	2 11/16	31/32	17/32	13/16	0.284	2.54	1.54	
40SH30	40QD30-SH	30	SH	QD-1	5.060	4.783	1/2	1 5/8	1 7/16	1 7/16	2 11/16	31/32	17/32	13/16	0.284	2.72	1.72	
40SH32	40QD32-SH	32	SH	QD-1	5.380	5.101	1/2	1 5/8	1 7/16	1 7/16	2 11/16	31/32	17/32	13/16	0.284	2.90	1.90	
40SH35	40QD35-SH	35	SH	QD-1	5.860	5.578	1/2	1 5/8	1 7/16	1 7/16	3	31/32	17/32	13/16	0.284	3.22	2.22	
40SDS36	40QD36-SDS	36	SDS	QD-1	6.020	5.737	1/2	2	1 1/2	1 1/2	3 3/16	1 1/32	15/32	3/4	0.284	3.20	2.20	
40SDS40	40QD40-SDS	40	SDS	QD-1	6.650	6.373	1/2	2	1 1/2	1 1/2	3 3/16	1 1/32	15/32	3/4	0.284	3.72	2.72	
40SDS42	40QD42-SDS	42	SDS	QD-1	6.970	6.691	1/2	2	1 1/2	1 1/2	3 3/16	1 1/32	15/32	3/4	0.284	3.92	2.92	
40SDS45	40QD45-SDS	45	SDS	QD-1	7.450	7.168	1/2	2	1 1/2	1 1/2	3 3/16	1 1/32	15/32	3/4	0.284	4.32	3.32	
40SDS48	40SDS48-SDS	48	SDS	QD-1	7.930	7.645	1/2	2	1 1/2	1 1/2	3 3/16	1 1/32	15/32	3/4	0.284	4.70	3.70	
40SDS54	40SDS54-SDS	54	SDS	QD-1	8.890	8.599	1/2	2	1 1/2	1 1/2	3 3/16	1 1/32	15/32	3/4	0.284	5.78	4.78	
40SDS60	40SDS60-SDS	60	SDS	QD-1	9.840	9.554	1/2	2	1 1/2	1 1/2	3 3/16	1 1/32	15/32	3/4	0.284	6.86	5.86	
40SK70	40SK70-SK	70	SK	QD-1	11.430	11.145	1/2	2 5/8	2 1/8	2 1/8	3 7/8	1 19/32	31/32	1 1/4	0.284	10.68	8.68	
40SK72	40SK72-SK	72	SK	QD-1	11.750	11.463	1/2	2 5/8	2 1/8	2 1/8	3 7/8	1 19/32	31/32	1 1/4	0.284	10.84	8.84	
40SK80	40SK80-SK	80	SK	QD-1	13.030	12.736	1/2	2 5/8	2 1/8	2 1/8	3 7/8	1 19/32	31/32	1 1/4	0.284	13.20	11.20	
40SK84	40SK84-SK	84	SK	QD-1	13.660	13.372	1/2	2 5/8	2 1/8	2 1/8	3 7/8	1 19/32	31/32	1 1/4	0.284	13.56	11.56	
40SK96	40SK96-SK	96	SK	QD-1	15.570	15.281	1/2	2 5/8	2 1/8	2 1/8	3 7/8	1 19/32	31/32	1 1/4	0.284	17.76	15.76	
40SK112	40QD112-SK	112	SK	QD-1	18.120	17.828	1/2	2 5/8	2 1/8	2 1/8	3 7/8	1 19/32	31/32	1 1/4	0.284	22.28	20.28	

SPROCKETS FOR No.40 PITCH (1/2" ANSI) CHAIN

STEEL

1/2" PITCH



TYPE - B

[SINGLE TAPER BUSH]

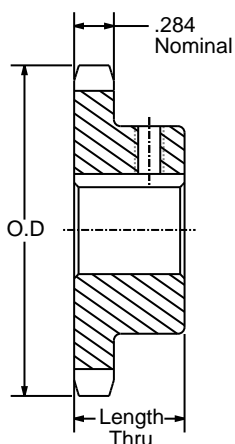
SPROCKETS FOR No.40 PITCH (1/2" ANSI) CHAIN												
OLD PART NUMBER	NEW PART NUMBER	NO. OF TEETH	BUSHING	TYPE	DIAMETERS		BORE RANGE		DIMENSIONS		WEIGHT	
					O.D.	P.D.	MIN	MAX	L	C	RIM ONLY	BUSH ONLY
40BTB14	40TL14-1008	14	1008	B	2.491	2.247	1/2	1	7/8	1 13/16*	0.30	0.30
40BTB15	40TL15-1008	15	1008	B	2.652	2.405	1/2	1	7/8	1 13/16	0.40	0.30
40BTB16	40TL16-1008	16	1008	B	2.814	2.563	1/2	1	7/8	1 15/16	0.50	0.30
40BTB17	40TL17-1210	17	1210	B	2.975	2.721	1/2	1 1/4	1	2 3/8*	0.50	0.30
40BTB18	40TL18-1210	18	1210	B	3.135	2.879	1/2	1 1/4	1	2 15/32*	0.60	0.60
40BTB19	40TL19-1210	19	1210	B	3.296	3.038	1/2	1 1/4	1	2 15/32	0.70	0.60
40BTB20	40TL20-1610	20	1610	B	3.457	3.196	1/2	1 5/8	1	2 25/32*	0.70	0.90
40BTB21	40TL21-1610	21	1610	B	3.617	3.355	1/2	1 5/8	1	2 25/32	0.80	0.90
40BTB22	40TL22-1610	22	1610	B	3.778	3.513	1/2	1 5/8	1	2 25/32	0.90	0.90
40BTB23	40TL23-1610	23	1610	B	3.938	3.672	1/2	1 5/8	1	3	1.00	0.90
40BTB24	40TL24-1610	24	1610	B	4.098	3.831	1/2	1 5/8	1	3 1/4	1.40	0.90
40BTB25	40TL25-1610	25	1610	B	4.258	3.989	1/2	1 5/8	1	3 1/4	1.50	0.90
40BTB26	40TL26-1610	26	1610	B	4.418	4.148	1/2	1 5/8	1	3 1/4	1.70	0.90
40BTB28	40TL28-1610	28	1610	B	4.738	4.466	1/2	1 5/8	1	3	1.80	0.90
40BTB30	40TL30-1610	30	1610	B	5.057	4.783	1/2	1 5/8	1	3	1.90	0.90
40BTB32	40TL32-1610	32	1610	B	5.377	5.101	1/2	1 5/8	1	3	1.90	0.90
40BTB35	40TL35-1610	35	1610	B	5.855	5.578	1/2	1 5/8	1	3	2.30	0.90
40BTB36	40TL36-1610	36	1610	B	6.015	5.737	1/2	1 5/8	1	3	2.40	0.90
40BTB40	40TL40-1610	40	1610	B	6.653	6.373	1/2	1 5/8	1	3	2.80	0.90
40BTB42	40TL42-1610	42	1610	B	6.972	6.691	1/2	1 5/8	1	3	2.90	0.90
40BTB45	40TL45-1610	45	1610	B	7.451	7.168	1/2	1 5/8	1	3	3.50	0.90
40BTB48	40TL48-1610	48	1610	B	7.928	7.645	1/2	1 5/8	1	3	4.00	0.90
40BTB54	40TL54-1610	54	1610	B	8.885	8.599	1/2	1 5/8	1	3	4.90	0.90
40BTB60	40TL60-1610	60	1610	B	9.841	9.554	1/2	1 5/8	1	3	6.00	0.90
40BTB70	40TL70-2012	70	2012	B	11.434	11.145	1/2	2	1 1/4	3 9/16	8.20	1.70
40BTB72	40TL72-2012	72	2012	B	11.752	11.463	1/2	2	1 1/4	3 9/16	9.00	1.70
40BTB80	40TL80-2012	80	2012	B	13.026	12.736	1/2	2	1 1/4	3 9/16	10.80	1.70
40BTB84	40TL84-2012	84	2012	B	13.663	13.372	1/2	2	1 1/4	3 9/16	11.30	1.70
40BTB96	40TL96-2012	96	2012	B	15.573	15.282	1/2	2	1 1/4	3 9/16	14.60	1.70
40BTB112	40TL112-2517	112	2517	B	18.122	17.828	1/2	2 1/2	1 3/4	4 1/4	20.50	1.70

* Has recessed groove in hub for chain clearance.

SPROCKETS FOR No.40 PITCH (1/2" ANSI) CHAIN

STEEL

1/2" PITCH



TYPE - BS

[SINGLE TYPE BS]

SPROCKETS FOR No.40 PITCH (1/2" ANSI) CHAIN

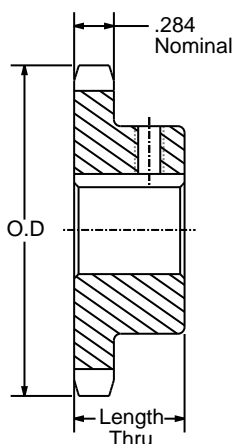
PART NUMBER	NO. OF TEETH	TYPE	DIAMETERS		LENGTH THRU	STOCK FINISHED BORES INCLUDES KEYWAY AND SETSCREW										WEIGHT LBS.	
			O.D.	P.D.													
40BS9	9	BS	1.670	1.462	7/8	*1/2	5/8										0.16
40BS10	10	BS	1.840	1.618	7/8	*1/2	5/8	3/4									0.24
40BS11	11	BS	2.000	1.775	7/8	*1/2	5/8	3/4	7/8								0.28
40BS12	12	BS	2.170	1.932	7/8	*1/2	5/8	3/4	7/8	1							0.34
40BS13	13	BS	2.330	2.089	7/8	*1/2	5/8	3/4	7/8	1							0.45
40BS14	14	BS	2.490	2.247	7/8	*1/2	5/8	3/4	7/8	1	1 1/8						0.51
40BS15	15	BS	2.650	2.405	7/8	*1/2	5/8	3/4	7/8	1	1 1/8	1 3/16	1 1/4				0.53
40BS16	16	BS	2.810	2.563	7/8		5/8	3/4	7/8	1	1 1/8	1 3/16	1 1/4				0.66
40BS17	17	BS	2.980	2.721	1		5/8	3/4	7/8	1	1 1/8	1 3/16	1 1/4				0.88
40BS18	18	BS	3.140	2.879	1		5/8	3/4	7/8	1	1 1/8	1 3/16	1 1/4	1 3/8	1 7/16	1 1/2	1.03
40BS19	19	BS	3.300	3.038	1		5/8	3/4	7/8	1	1 1/8	1 3/16	1 1/4	1 3/8	1 7/16	1 1/2	1.17
40BS20	20	BS	3.460	3.196	1		5/8	3/4	7/8	1	1 1/8	1 3/16	1 1/4	1 3/8	1 7/16	1 1/2	1.33
40BS21	21	BS	3.620	3.355	1		5/8	3/4	7/8	1	1 1/8	1 3/16	1 1/4	1 3/8	1 7/16	1 1/2	1.53
40BS22	22	BS	3.780	3.513	1		5/8	3/4	7/8	1	1 1/8	1 3/16	1 1/4	1 3/8	1 7/16	1 1/2	1.66
40BS23	23	BS	3.940	3.672	1		5/8	3/4	7/8	1	1 1/8	1 3/16	1 1/4	1 3/8	1 7/16	1 1/2	1.92
40BS24	24	BS	4.100	3.831	1		5/8	3/4	7/8	1	1 1/8	1 3/16	1 1/4	1 3/8	1 7/16	1 1/2	2.10
40BS25	25	BS	4.260	3.989	1		5/8	3/4	7/8	1	1 1/8	1 3/16	1 1/4		1 7/16	1 1/2	2.22
40BS26	26	BS	4.420	4.148	1		5/8	3/4	7/8	1	1 1/8	1 3/16	1 1/4		1 7/16	1 1/2	2.34
40BS27	27	BS	4.580	4.307	1		5/8	3/4	7/8	1	1 1/8	1 3/16	1 1/4		1 7/16	1 1/2	2.42
40BS28	28	BS	4.740	4.466	1		5/8	3/4	7/8	1	1 1/8	1 3/16	1 1/4		1 7/16	1 1/2	2.50
40BS29	29	BS	4.900	4.625	1		5/8	3/4	7/8	1	1 1/8	1 3/16	1 1/4		1 7/16	1 1/2	2.60
40BS30	30	BS	5.060	4.783	1		5/8	3/4	7/8	1	1 1/8	1 3/16	1 1/4		1 7/16	1 1/2	2.70
40BS31	31	BS	5.220	4.942	1		5/8	3/4	7/8	1	1 1/8	1 3/16	1 1/4		1 7/16	1 1/2	2.88
40BS32	32	BS	5.380	5.101	1		5/8	3/4	7/8	1	1 1/8	1 3/16	1 1/4		1 7/16	1 1/2	3.00
40BS33	33	BS	5.540	5.25	1		5/8	3/4	7/8	1	1 1/8	1 3/16	1 1/4		1 7/16	1 1/2	3.03
40BS34	34	BS	5.700	5.419	1		5/8	3/4	7/8	1	1 1/8	1 3/16	1 1/4		1 7/16	1 1/2	3.11
40BS35	35	BS	5.860	5.578	1		5/8	3/4	7/8	1	1 1/8	1 3/16	1 1/4		1 7/16	1 1/2	3.20
40BS36	36	BS	6.020	5.737	1		5/8	3/4	7/8	1	1 1/8	1 3/16	1 1/4		1 7/16	1 1/2	3.39
40BS37	37	BS	6.180	5.895	1		5/8	3/4	7/8	1	1 1/8	1 3/16	1 1/4		1 7/16	1 1/2	3.45
40BS38	38	BS	6.330	6.055	1		5/8	3/4	7/8	1	1 1/8	1 3/16	1 1/4		1 7/16	1 1/2	3.50
40BS39	39	BS	6.490	6.213	1		5/8	3/4	7/8	1	1 1/8	1 3/16	1 1/4		1 7/16	1 1/2	4.00
40BS40	40	BS	6.650	6.373	1 1/8			3/4	7/8	1	1 1/8	1 3/16	1 1/4		1 7/16	1 1/2	4.28

* Indicates no keyway

SPROCKETS FOR No.40 PITCH (1/2" ANSI) CHAIN

STEEL

1/2" PITCH



TYPE - BS

[SINGLE TYPE BS]

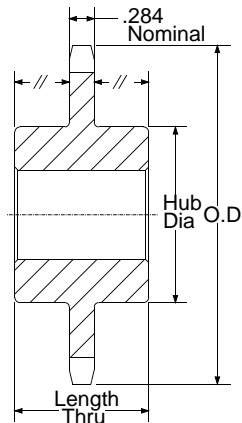
SPROCKETS FOR No.40 PITCH (1/2" ANSI) CHAIN

PART NUMBER	NO. OF TEETH	TYPE	DIAMETERS		LENGTH THRU	STOCK FINISHED BORES INCLUDES KEYWAY AND SETSCREW										WEIGHT LBS.	
			O.D.	P.D.													
40BS41	41	BS	6.810	6.532	1 1/8			3/4	7/8	1	1 1/8	1 3/16	1 1/4		1 7/16	1 1/2	4.58
40BS42	42	BS	6.970	6.691	1 1/8			3/4	7/8	1	1 1/8	1 3/16	1 1/4		1 7/16	1 1/2	4.64
40BS43	43	BS	7.130	6.850	1 1/8			3/4	7/8	1	1 1/8	1 3/16	1 1/4		1 7/16	1 1/2	4.80
40BS44	44	BS	7.290	7.009	1 1/8			3/4	7/8	1	1 1/8	1 3/16	1 1/4		1 7/16	1 1/2	4.96
40BS45	45	BS	7.450	7.168	1 1/8			3/4	7/8	1	1 1/8	1 3/16	1 1/4		1 7/16	1 1/2	5.06
40BS46	46	BS	7.610	7.326	1 1/8			3/4	7/8	1	1 1/8	1 3/16	1 1/4		1 7/16	1 1/2	5.19
40BS47	47	BS	7.770	7.486	1 1/8			3/4	7/8	1	1 1/8	1 3/16	1 1/4		1 7/16	1 1/2	5.26
40BS48	48	BS	7.930	7.645	1 1/8			3/4	7/8	1	1 1/8	1 3/16	1 1/4		1 7/16	1 1/2	5.66
40BS49	49	BS	8.090	7.803	1 1/8			3/4	7/8	1	1 1/8	1 3/16	1 1/4		1 7/16	1 1/2	5.72
40BS50	50	BS	8.250	7.963	1 1/8			3/4	7/8	1	1 1/8	1 3/16	1 1/4		1 7/16	1 1/2	5.78
40BS51	51	BS	8.410	8.122	1 1/8			3/4	7/8	1	1 1/8	1 3/16	1 1/4		1 7/16	1 1/2	5.90
40BS52	52	BS	8.570	8.281	1 1/8			3/4	7/8	1	1 1/8	1 3/16	1 1/4		1 7/16	1 1/2	5.94
40BS53	53	BS	8.730	8.440	1 1/8			3/4	7/8	1	1 1/8	1 3/16	1 1/4		1 7/16	1 1/2	6.12
40BS54	54	BS	8.890	8.599	1 1/8			3/4	7/8	1	1 1/8	1 3/16	1 1/4		1 7/16	1 1/2	6.24
40BS55	55	BS	9.040	8.758	1 1/8			3/4	7/8	1	1 1/8	1 3/16	1 1/4		1 7/16	1 1/2	6.66
40BS56	56	BS	9.200	8.917	1 1/8			3/4	7/8	1	1 1/8	1 3/16	1 1/4		1 7/16	1 1/2	6.71
40BS57	57	BS	9.360	9.076	1 1/8			3/4	7/8	1	1 1/8	1 3/16	1 1/4		1 7/16	1 1/2	6.94
40BS58	58	BS	9.520	9.235	1 1/8			3/4	7/8	1	1 1/8	1 3/16	1 1/4		1 7/16	1 1/2	7.17
40BS59	59	BS	9.680	9.394	1 1/8			3/4	7/8	1	1 1/8	1 3/16	1 1/4		1 7/16	1 1/2	7.38
40BS60	60	BS	9.840	9.554	1 1/8			3/4	7/8	1	1 1/8	1 3/16	1 1/4		1 7/16	1 1/2	7.68
40BS70	70	BS	11.430	11.145	1 1/4			3/4	7/8	1	1 1/8	1 3/16	1 1/4		1 7/16	1 1/2	10.80
40BS72	72	BS	11.750	11.463	1 1/4			3/4	7/8	1	1 1/8	1 3/16	1 1/4		1 7/16	1 1/2	11.30
40BS80	80	BS	13.030	12.736	1 1/4			3/4	7/8	1	1 1/8	1 3/16	1 1/4		1 7/16	1 1/2	13.20
40BS84	84	BS	13.660	13.372	1 1/4			3/4	7/8	1	1 1/8	1 3/16	1 1/4		1 7/16	1 1/2	13.84
40BS96	96	BS	15.570	15.281	1 1/4					1	1 1/8	1 3/16	1 1/4		1 7/16	1 1/2	17.44
40BS112	112	BS	18.120	17.828	1 1/4					1	1 1/8	1 3/16	1 1/4		1 7/16	1 1/2	22.45

SPROCKETS FOR No.40 PITCH (1/2" ANSI) CHAIN

STEEL

1/2" PITCH



[SINGLE TYPE C]

TYPE - C

SPROCKETS FOR No.40 PITCH (1/2" ANSI) CHAIN									
PART NUMBER	NO. OF TEETH	DIAMETERS		BORE RANGE			DIMENSIONS		WEIGHT LBS.
		O.D.	P.D.	MIN	MAX	STOCK BORE	HUB DIAMETER	LENGTH THRU	
40C12	12	2.170	1.932	1/2	1	1/2	1 39/64*	1 1/2	0.75
40C13	13	2.330	2.089	1/2	1 1/16	1/2	1 3/4	1 1/2	0.94
40C14	14	2.490	2.247	1/2	1 1/8	1/2	1 11/16	1 1/2	0.91
40C15	15	2.650	2.405	1/2	1 1/4	1/2	1 7/8	1 1/2	1.19
40C16	16	2.810	2.563	1/2	1 3/8	1/2	2	1 1/2	1.34
40C17	17	2.980	2.721	5/8	1 7/16	5/8	2 1/8	1 1/2	1.50
40C18	18	3.140	2.879	5/8	1 1/2	5/8	2 5/16	1 1/2	1.80

*Has recessed groove in hub for chain clearance.