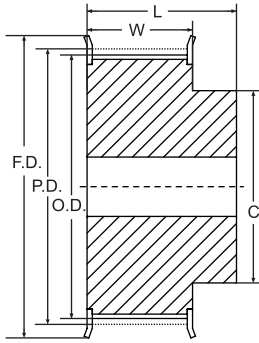


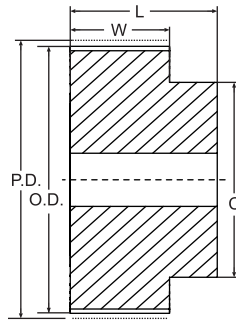
TIMING BELT PULLEY AT5MM PITCH (TRAPEZOIDAL TEETH)

**ALUMINUM
CLEAR ANODIZED**

FOR 25MM WIDE BELTS



TYPE - 6F



TYPE - 6



Note : All Dimensions are in MM

5mm PITCH (AT) 25mm WIDE BELTS												
PART NUMBER	NO. OF TEETH	TYPE	DIAMETERS				STOCK BORES		DIMENSIONS		HUB PROJ.	WEIGHT (lbs.)
			P.D.	O.D.	F.D.	HUB	MIN.	MAX.	L	W		
38 AT 5/20-2	20	6F	31.83	30.60	36	24	6	10	38	32	6	0.01
38 AT 5/22-2	22	6F	35.02	33.85	39	24	6	10	38	32	6	0.02
38 AT 5/24-2	24	6F	38.21	37.00	42	26	8	10	38	32	6	0.02
38 AT 5/25-2	25	6F	39.80	38.60	43	26	8	10	38	32	6	0.02
38 AT 5/27-2	27	6F	42.98	41.80	47	30	8	10	38	32	6	0.02
38 AT 5/30-2	30	6F	47.76	46.55	51	34	8	10	38	32	6	0.03
38 AT 5/32-2	32	6F	50.94	49.70	55	38	8	10	38	32	6	0.03
38 AT 5/36-2	36	6F	57.31	56.05	61	38	8	12	38	32	6	0.04
38 AT 5/40-2	40	6F	63.66	62.45	67	40	8	12	38	32	6	0.05
38 AT 5/44-2	44	6F	70.05	68.80	74	50	8	12	38	32	6	0.06
38 AT 5/48-2	48	6F	76.42	75.15	-	50	8	12	38	32	6	0.07
38 AT 5/60-2	60	6	95.52	94.25	-	65	8	12	38	32	6	0.12
38 AT 5/72-2	72	6	114.62	113.15	-	80	10	16	38	32	6	0.17

Note : Part number listed are for Stock bore
Rework services are available to accommodate Max Bore Size
Drill & Tap Set Screw holes as per request.